

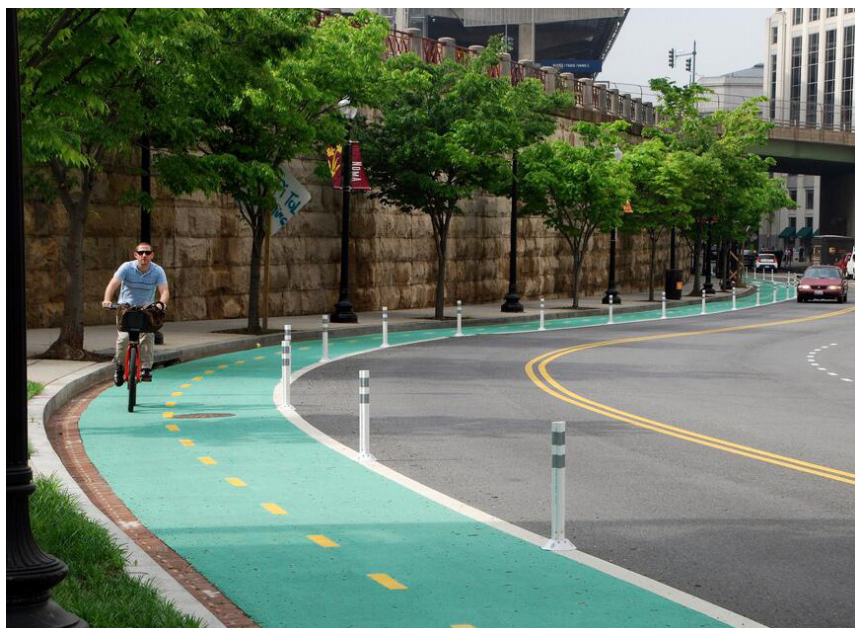


5. Bikeways

Definition	A system consisting of bike routes that provides safe bicycle access and recreational opportunities for the community.
Size	Varies per facility type. Refer to the Montgomery <i>Countywide Bikeways Functional Master Plan</i> for specific dimensions.
Possible Activities	Bike riding
Location	On private property as part of residential development or on public property within the public right-of-way.
Design Criteria	<p>Bike routes should provide safe linkages to neighborhood destinations, such as public transportation and public facilities, and access to the countywide bike network.</p> <p>Bikeways should be provided through natural areas wherever possible.</p> <p>Resting areas and bike repair stations should be provided.</p> <p>Must comply with the Bicycle Master Plan.</p>
Components	Benches, bicycle support stations, bicycle repair rooms, bicycle storage areas.

Supply Values

	Tots	Children	Teens	Young Adults	Adults	Seniors
Bikeways	0.05 x D1	0.10 x D2	0.15 x D3	0.15 x D4	0.15 x D5	0.10 x D6



*Protected bicycle lane,
Washington DC*