

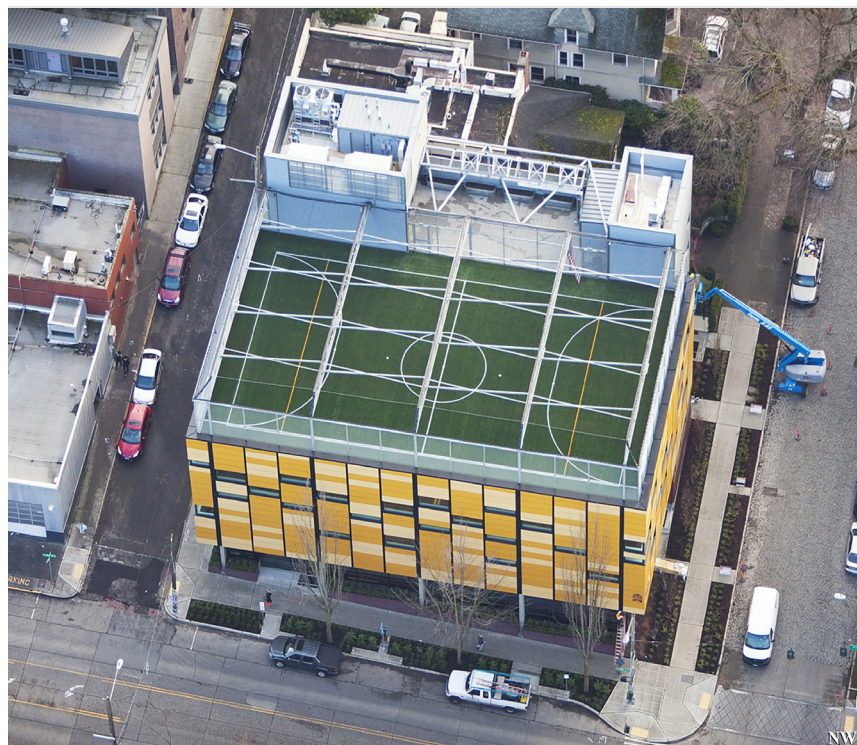


65. School Athletic Field (Major Public Facility)

Definition	Land set aside for construction of publicly accessible athletic fields to be managed by the Montgomery County Public Schools (MCPS).
Size	Subject to program of requirements of Montgomery County Public Schools and the Montgomery County Department of Parks.
Possible Activities	Sports, athletic events.
Location	As determined by Montgomery County Public Schools.
Design Criteria	Subject to requirements of Montgomery County Public Schools and the Montgomery County Department of Parks.

Supply Values

	Tots	Children	Teens	Young Adults	Adults	Seniors
School Athletic Field	2	20	25	25	25	2



*North West School,
Seattle, WA*