

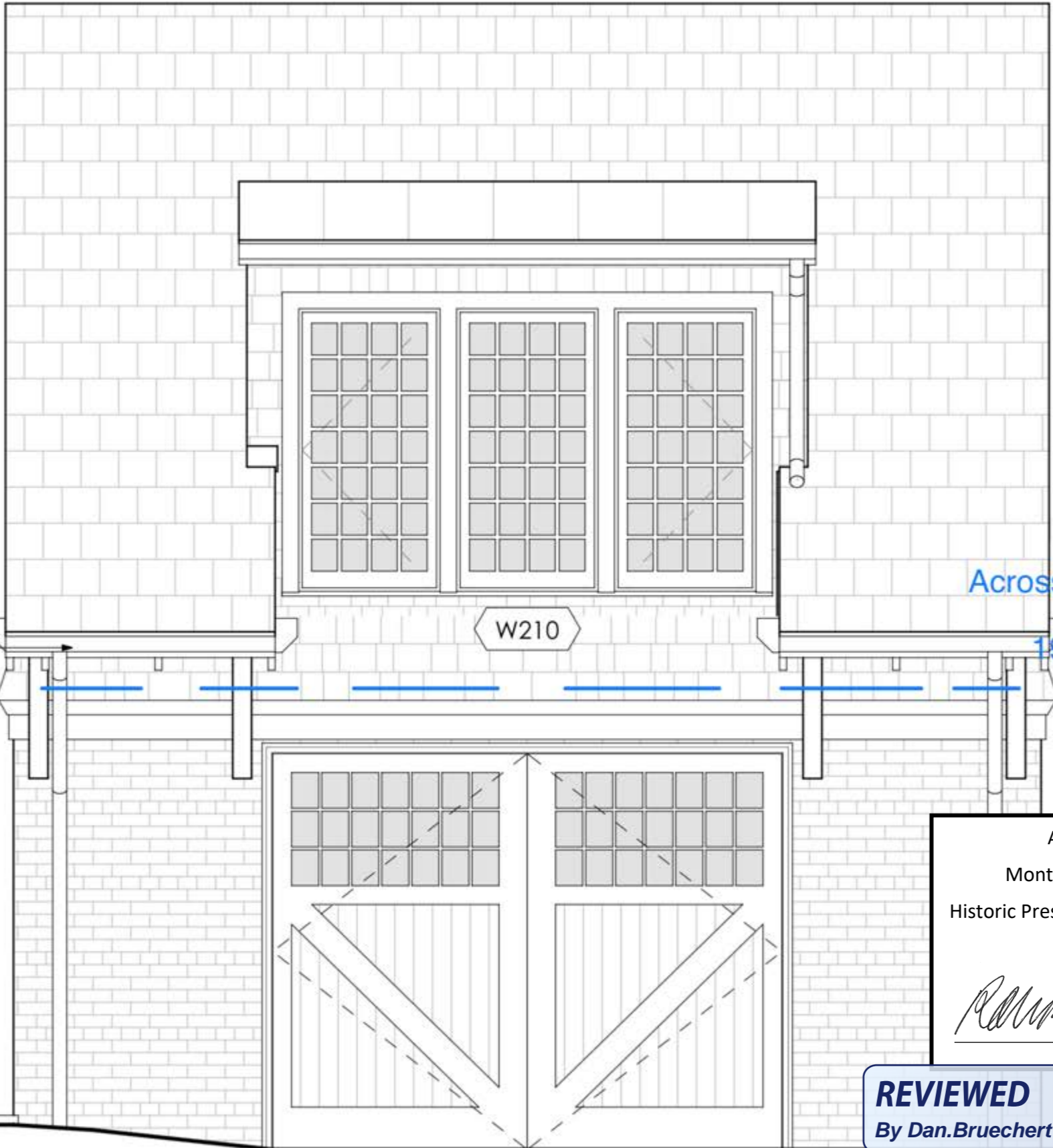
18'-4 1/2"
2nd Floor Ceiling

9'-11"
2nd Floor

SEE GARAGE ELEVATIONS
ON SHEETS A2-5 & A2-6

UNFILLED

0"
1st Floor



Proposed trellis
Across western facade of Garage
Dimensions: ~
19-20' L x 1.5' H x 1.5' D

APPROVED
Montgomery County
Historic Preservation Commission
[Signature]

REVIEWED
By Dan.Bruechert at 4:12 pm, Sep 15, 2022

Example of
Garage Pergola
Style for 34
HAWP



How to Install a Garage Door Pergola

APPROVED
Montgomery County
Historic Preservation Commission
[Signature]

Use milled brackets and pressure-treated lumber to create an elegant canopy over your garage door.

REVIEWED
By Dan.Bruechert at 4:16 pm, Sep 15, 2022

By Paul Hope on July 1, 2020 11:13 am





Example of style of garage pergola for
34 W Kirke St (will be painted white)

HAWP
#996752



APPROVED

Montgomery County
Historic Preservation Commission

REVIEWED

By Dan.Bruechert at 4:16 pm, Sep 15, 2022

