



HISTORIC PRESERVATION COMMISSION

Marc Elrich
County Executive

Robert Sutton
Chairman

Date: March 26, 2021

MEMORANDUM

TO: Mitra Pedoeem
Department of Permitting Services

FROM: Michael Kyne
Historic Preservation Section
Maryland-National Capital Park & Planning Commission

SUBJECT: Historic Area Work Permit #937442: Roof replacement and exterior alterations

The Montgomery County Historic Preservation Commission (HPC) has reviewed the attached application for a Historic Area Work Permit (HAWP). This application was **Approved** at the March 24, 2021 HPC meeting.

The HPC staff has reviewed and stamped the attached construction drawings.

THE BUILDING PERMIT FOR THIS PROJECT SHALL BE ISSUED CONDITIONAL UPON ADHERENCE TO THE ABOVE APPROVED HAWP CONDITIONS AND MAY REQUIRE APPROVAL BY DPS OR ANOTHER LOCAL OFFICE BEFORE WORK CAN BEGIN.

Applicant: Melanie Stevenson
Address: 7133 Sycamore Avenue, Takoma Park

This HAWP approval is subject to the general condition that the applicant will obtain all other applicable Montgomery County or local government agency permits. After the issuance of these permits, the applicant must contact this Historic Preservation Office if any changes to the approved plan are made. Once work is complete the applicant will contact Michael Kyne at 301.563.3403 or michael.kyne@montgomeryplanning.org to schedule a follow-up site visit.



North Façade

Scale:

2ft

Elevation

REVIEWED

By Michael Kyne at 1:51 am, Mar 26, 2021

APPROVED

Montgomery County

Historic Preservation Commission



Install 7 stairs and Handrails

Remove Railing

Remove Staircase

Install Window

Install Window

Install Window

Remove Vinyl Siding

Install Garage Door

Door

Stairs

REVIEWED

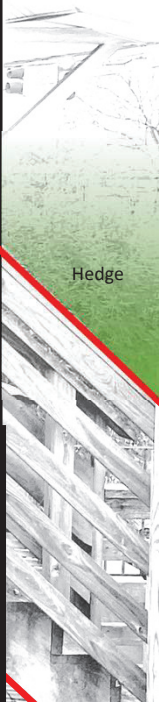
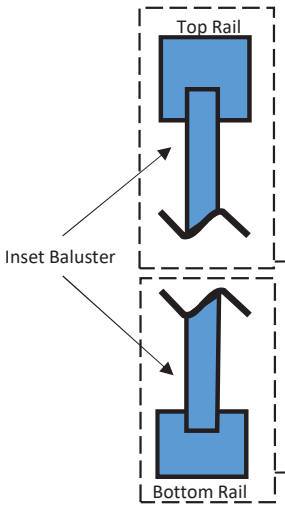
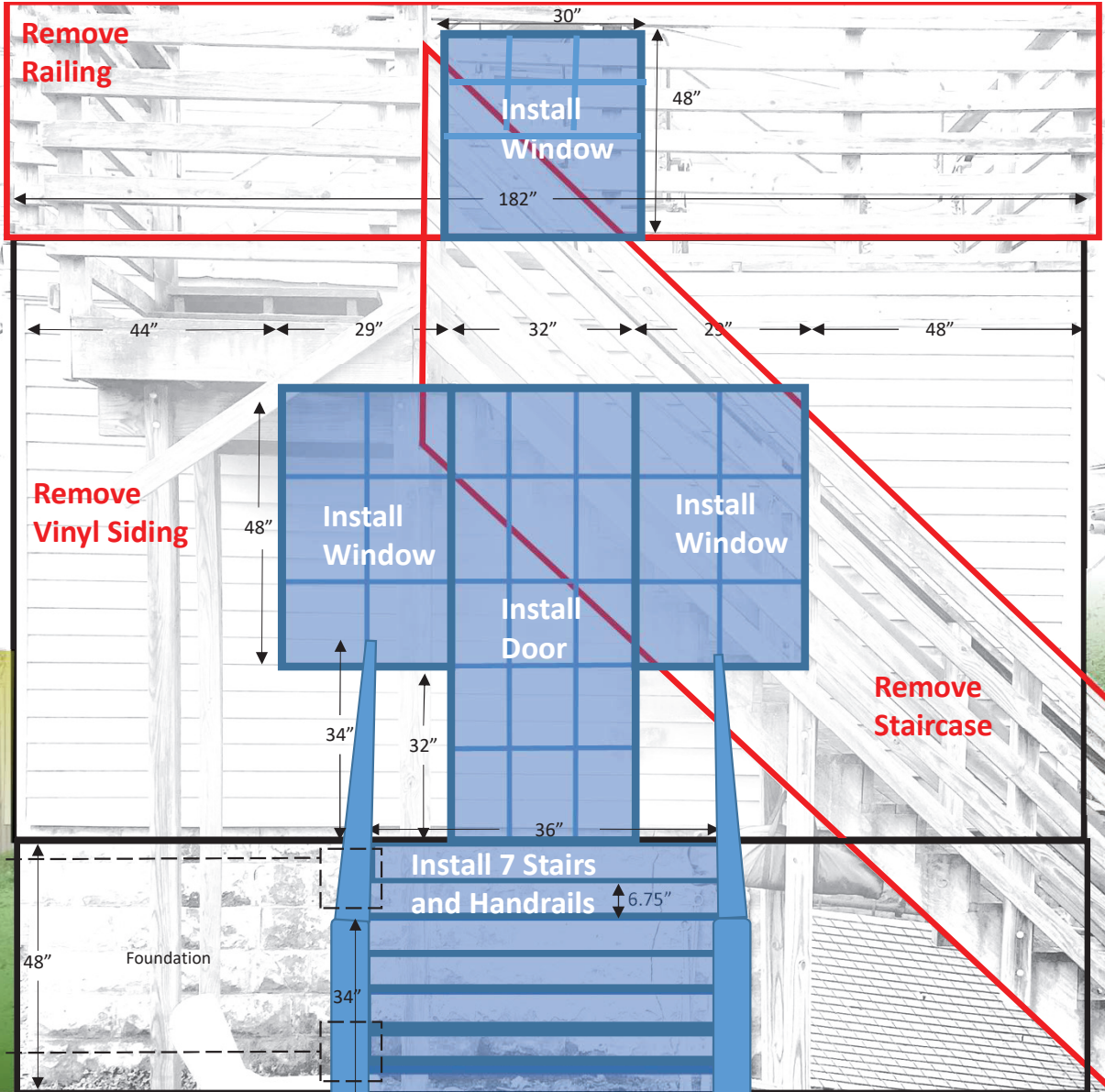
By Michael Kyne at 1:51 am, Mar 26, 2021

East
Elev

APPROVED
Montgomery County
Historic Preservation Commission

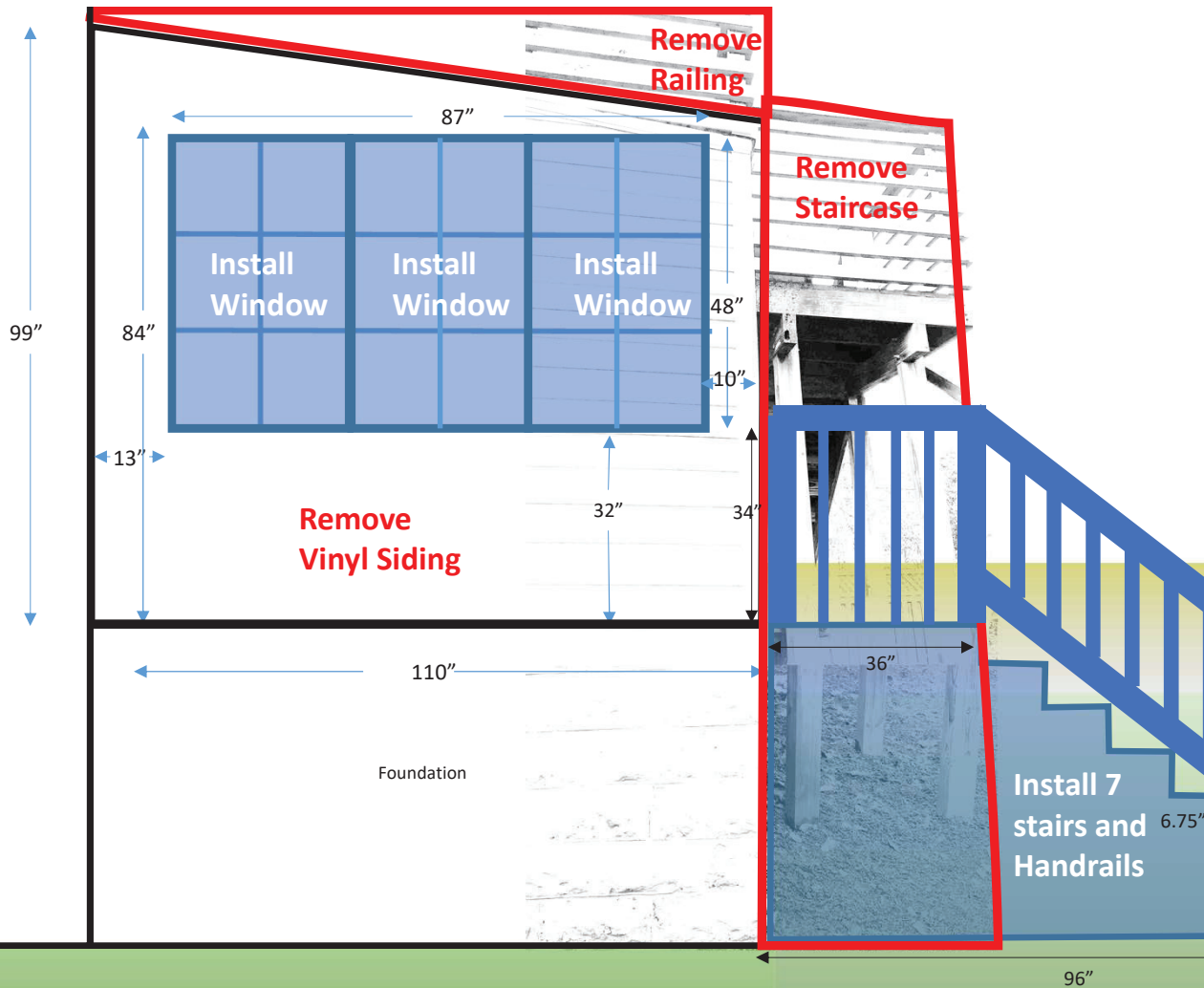


Scale: 2ft



South Façade Elevation

Scale: 2ft

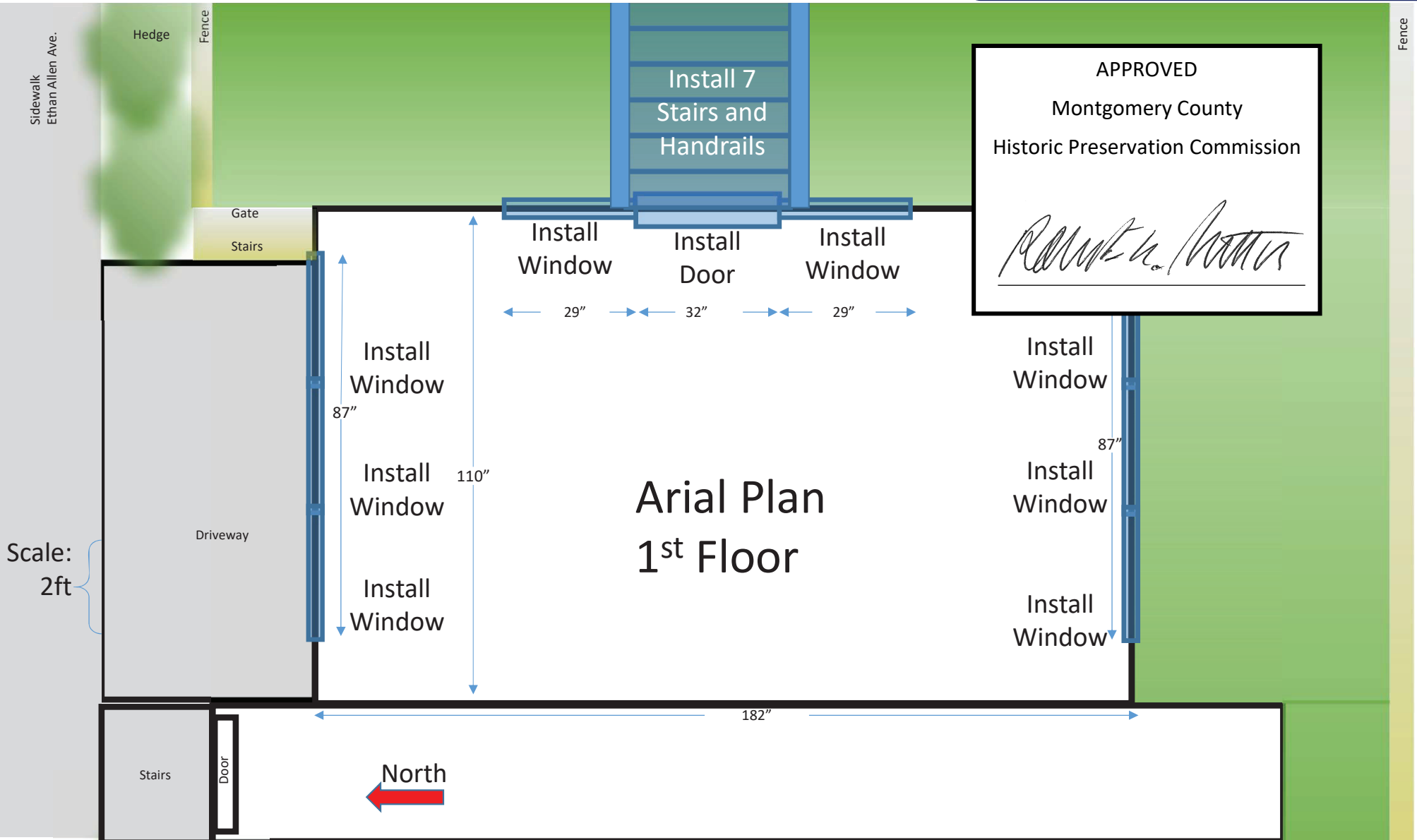


REVIEWED
By Michael Kyne at 1:51 am, Mar 26, 2021

APPROVED
Montgomery County
Historic Preservation Commission
Robert H. [Signature]

Yard

REVIEWED
By Michael Kyne at 1:51 am, Mar 26, 2021



REVIEWED

By Michael Kyne at 1:51 am, Mar 26, 2021

APPROVED
Montgomery County
Historic Preservation Commission



Remove
Staircase

Remove
Railing

182"

Repair/Replace
Roof

110"

Install
Window

North



Arial Plan
2nd Floor

Driveway

Stairs

Yard

Sidewalk
Ethan Allen Ave.

Hedge

Fence

Fence

Scale:
2ft

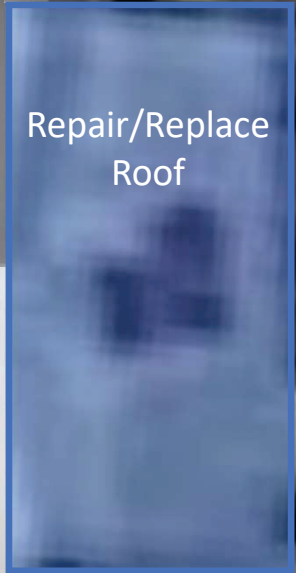


Repair/Replace
Roof

7133

REVIEWED
By Michael Kyne at 1:51 am, Mar 26, 2021

APPROVED
Montgomery County
Historic Preservation Commission

Repair/Replace
Roof

Aerial roof diagram



North

West Façade Elevation

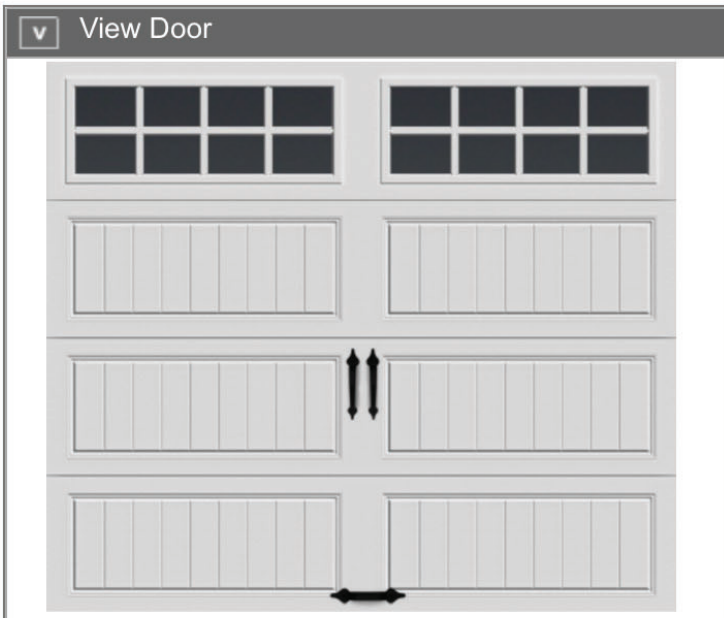


	Installed Price
Edit Size : 9' 2"(w) x 7' 0"(h)	
Edit WindCode : W0	
Edit Collection : GALLERY® Steel	
Edit Door Design : Long Panel	
Door Model : GR4LV	\$1113.00
Edit Door Construction : 2-Layer 1 5/16" Polystyrene Ins 24 Ga Shiplap Jnt R-Value 6.3	
Edit Color : Standard White	\$0.00
Edit Top Section : Long with Square Grilles	
Edit Glass Type : DSB Strength Clear Glass (Non-Insulated)	\$261.00
Edit Hardware :	
• Handles : Spade Lift Handle (x1 Pair Per Door)	\$0.00
• Step Plate : Spade Step Plate (x1 Per Door)	\$0.00
• Hinges : No Hinge (x0 Per Door)	\$0.00

SELECT & PROCEED WITH INSTALLED DOOR >

Price: **\$1374.00**

< PREVIOUS STEP



> View Home
> View Details

\$1374.00 / Installed

i Installed vs Do-It-Yourself

Quantity: **1**

REVIEWED
By Michael Kyne at 1:52 am, Mar 26, 2021

APPROVED
Montgomery County
Historic Preservation Commission

RUBEROID® 20 Smooth Membrane

Updated: 8/16

REVIEWED

By Michael Kyne at 1:52 am, Mar 26, 2021

APPROVED

Montgomery County

Historic Preservation Commission



Robert A. Patton



*Quality You Can Trust...From
North America's Largest Roofing Manufacturer!™*



RUBEROID®

20 SMOOTH MEMBRANE

Formerly RUBEROID 20

REVIEWED

By Michael Kyne at 1:52 am, Mar 26, 2021



Description

RUBEROID® 20 Smooth Membrane is a tough, resilient, self-healing membrane manufactured to stringent GAF

interply roofing membrane in modified bitumen systems, including GAF CompositeRoof™ and 20/30 systems.

Advantages

- System guarantees are available for up to 20 years.*
- Light weight—Installed roof designs weigh less than 3 pounds per square foot (14.6 kg/m²).
- Durable—Combines the strength of fiberglass reinforcement with the elongation characteristics of SBS modified asphalt.

Advantages (Continued)

- RUBEROID® 20 Smooth Membrane is manufactured by GAF, a company with over 125 years in the roofing business. Available as a smooth surface.

* See applicable guarantee for complete coverage and restrictions.

Applicable Standards

Meets ASTM D6163, Type I, Grade S
ICC ESR-1274 Approved
Florida Department of Insurance Approved
Texas Department of Insurance Approved
UL/ULC Classified

Product Specifications (nominal)

Roll Size	1.5 square (161.4 gross sq. ft.) (15.0 m²)
Roll Length	49.2' (15.34 m)
Roll Width	39.375" (1.0 m)
Approx. Roll Weight	89.0 lb (40.37 kg)
Product Thickness	0.085" (2.1 mm)

This product meets or exceeds the following ASTM D6163, Type I, Grade S, minimum requirements:

Property	Test Method	Value
Tensile Strength @ 0°F (min), lbf/in	ASTM D5147	70
Elongation @ 0°F (min), %	ASTM D5147	1
Low Temperature Flexibility (max), °F	ASTM D5147	0
Tear Strength (min), lbf	ASTM D5147	35
Dimensional Stability, (max) %	ASTM D5147	0.5

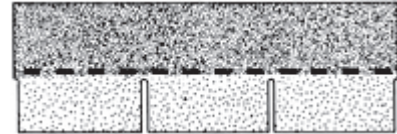
Technical Data Sheet

XT™ 30 Shingles
 XT™ 25 Shingles
 CT™ 20 Shingles



PRODUCT INFORMATION

CertainTeed offers a variety of three-tab shingle products that combine exceptional durability with flexibility for better resistance to blow-off. In addition to their suitability for residential applications, these products are ideal for commercial applications. Available in “English” dimensions – 12" x 36" and in “Metric” dimensions – 13 1/4" x 39 3/8", depending on the product and sales region.



Algae Resistant (AR) versions of these shingles are available in some regions. Algae resistant shingles help protect against staining or discoloration caused by algae.

Colors: Please refer to the product brochure or CertainTeed website for the colors available in your region.

Limitations: Use on roofs with slopes greater than 2" per foot. Low slope applications (2" to 4" per foot) require additional underlayment. In areas where icing along the eaves can cause a backup of water, apply CertainTeed WinterGuard® Waterproofing Shingle Underlayment, or its equivalent, according to application instructions provided with the product and on the shingle package.

On slopes greater than 21" per foot, apply a spot of roofing cement under each shingle tab corner according to application instructions provided on the shingle package.

Product Composition: These shingles are composed of a fiber glass mat base. Ceramic-coated mineral granules are tightly embedded in carefully refined, water-resistant asphalt. These shingles have self-sealing adhesive. These are 3-tab shingles.

Applicable Standards:

- ASTM D3018 Type I
- ASTM D3462
- ASTM E108 Class A Fire Resistance
- ASTM D3161 Class F Wind Resistance
- ASTM D7158 Class H Wind Resistance

Technical Data:

	XT 30 – English
Weight/Square (approx.):	215 lbs
Dimensions (overall):	12" x 36"
Shingles/Square:	80
Weather Exposure:	5"
	XT 25 – English
Weight/Square (approx.):	205 lbs
Dimensions (overall):	12" x 36"
Shingles/Square:	80
Weather Exposure:	5"
	CT 20 – English
Weight/Square (approx.):	195 lbs
Dimensions (overall):	12" x 36"
Shingles/Square:	80
Weather Exposure:	5"

REVIEWED

By Michael Kyne at 1:52 am, Mar 26, 2021

ICC-ES ESR-1389 and ESR-3537

CSA Standard

Florida Product

Miami-Dade Pr



XT 20 – English
 220 lbs
 13-1/4" x 39-3/8"
 65
 5-5/8"

CT 20 – Metric
 195 lbs
 13-1/4" x 39-3/8"
 65
 5-5/8"

INSTALLATION

The following is a general summary of the installation methods. Detailed installation instructions are supplied on each bundle of strip shingles and must be followed. Separate application sheets may also be obtained from CertainTeed.

Roof Deck Requirements: Apply shingles to minimum 3/8" thick plywood, minimum 7/16" thick non-veneer (e.g. OSB), or minimum 1" thick (nominal) wood decks. The plywood or non-veneer decks must comply with the specifications of APA-The Engineered Wood Association.

Ventilation: Provisions for ventilation should meet or exceed current HUD Standards. To ensure adequate balance ventilation, use a combination of continuous ridge ventilation (using CertainTeed Ridge Vent products, or a comparable product with an external baffle) combined with soffit venting.

Valleys: Valley liner must be applied before shingles. The Closed-Cut valley application method is recommended, using CertainTeed WinterGuard Waterproofing Shingle Underlayment, or its equivalent, to line the valley prior to being fully covered by the shingles.

Underlayment:

On slopes 4" per foot or greater, CertainTeed recommends one layer of DiamondDeck® Synthetic Underlayment, or Roofers' Select® High-Performance shingle underlayment, or shingle underlayment meeting ASTM D226, D4869 or ASTM D6757. Always ensure sufficient deck ventilation, and take particular care when DiamondDeck or other synthetic underlayment is installed. For UL fire rating, underlayment may be required. Corrosion-resistant drip edge is recommended and should be placed over the underlayment at the rake and beneath the underlayment at the eaves. Follow manufacturer's application instructions.

On low slopes (2" up to 4" per foot), one layer of CertainTeed's WinterGuard Waterproofing Shingle Underlayment (or equivalent meeting ASTM D1970) or two layers of 36" wide felt shingle underlayment (Roofers' Select High-Performance Underlayment or product meeting ASTM D226, D4869 or ASTM D6757) lapped 19" must be applied over the entire roof. When DiamondDeck or other synthetic underlayment is installed, ensure sufficient deck ventilation. When WinterGuard is applied to the rake, the drip edge may be installed under or over WinterGuard. At the eave, when WinterGuard overlaps the fascia or gutter, the drip edge or other metal must be installed over it. Follow manufacturer's application instructions.

REVIEWED
By Michael Kyne at 1:52 am, Mar 26, 2021

Fastening: Four nails are required per shingle. For English-sized shingles, nails should be located 1" above the top of each cutout and 1" and 12" in from each side of the shingle. For standard-sized shingles, they are to be located 1" and 13-1/8" in from each side of the shingle. Nails should penetrate into the deck 3/4" or through the thickness of the decking, which may be 1/2" or 12 gauge, corrosion-resistant roofing nails with 3/8" heads.

On steep slopes greater than 21" per foot, apply a spot of roofing cement according to application instructions provided on the shingle package.

Application (English-Sized Shingles): The recommended application is the Stepped-Off Diagonal Method found on each bundle of shingles. These shingles may also be installed using the 5" Stepped-Off Diagonal Method, or the 6" Offset, Single-Column Vertical-Racking Method, instructions for which may be obtained from CertainTeed. These shingles may be used for new construction or for re-roofing over old shingles.

APPROVED
Montgomery County
Historic Preservation Commission


Application (Metric-sized shingles): The recommended application method is the Seven Course, 5-5/8" Stepped-Off Diagonal Method found on each bundle of shingles. These shingles may also be applied using the Eight Course, 5" Stepped-Off Diagonal Method or the Half-Tab Diagonal Method, instructions for which may be obtained from CertainTeed. These shingles may be used for new construction or for reroofing over old shingles.

Flashing: Use corrosion-resistant metal flashing.

Hips and Ridges: Use field shingles of a like color for capping hips and ridges.

MAINTENANCE

These shingles do not require maintenance when installed according to manufacturer's application instructions. However, to protect the investment, any roof should be routinely inspected at least once a year. Older roofs should be looked at more frequently.

WARRANTY

XT 30 (and AR), shingles carry a 30-year limited transferable warranty, XT 25 (and AR) carry a 25-year limited transferable warranty, and CT 20 (and AR), shingles carry a 20 year limited transferable warranty to the consumer against manufacturing defects. All of these shingles carry 5-year SureStart protection except for CT 20 which carries 3-year SureStart protection. For specific warranty details and limitations, refer to the warranty itself (available from the local supplier, roofing contractor or on-line at www.certainteed.com).

FOR MORE INFORMATION

Sales Support Group: 800-233-8990

Web site: www.certainteed.com

See us at our on-line specification writing tool, CertaSpec, at www.certainteed.com/certaspec.

REVIEWED

By Michael Kyne at 1:52 am, Mar 26, 2021

APPROVED

Montgomery County

Historic Preservation Commission



CertainTeed Roofing

20 Moores Road
Malvern, PA 19355

© Copyright CertainTeed Corporation, 2016
All rights reserved. Updated: 05/2016



**CLAD SWINGING DOORS AND SIDELIGHTS
Aspen Swing Doors and Sidelights**

Sierra Pacific Windows
P.O. Box 8489
Red Bluff, CA 96080
Toll Free Tel: 800.433.4873
Web: www.sierrapacificwindows.com

PART 1 GENERAL

1.1 SUMMARY

- A. Related Documents: Provisions established within the General and Supplementary Conditions of the Contract, Division 1 - General Requirements, and the Drawings are collectively applicable to this Section.
- B. Section Includes:
 - 1. Aluminum clad wood swing panels (outswing) and sidelights installed in frame.
- C. Related Sections:
 - 1. Section [] - Rough Carpentry: Wood blocking.
 - 2. Section [] - Sheet Metal Flashing and Trim: Flashing for opening.
 - 3. Section [] - Painting: Field finishing.

1.2 REFERENCES

- A. American Architectural Manufacturers Association (AAMA):
 - 1. AAMA/WDMA/CSA 101/I.S.2/A440-08 "NAFS - North American Fenestration Standard/Specification for windows, doors and skylights."
 - 2. AAMA/WDMA/CSA 101/I.S.2/A440-11 "NAFS - 2011 - North American Fenestration Standard/Specification for windows, doors and skylights."
 - 3. AAMA 2604 "Voluntary Specification for Performance Requirements and Test Procedures for High Performance Panels."
 - 4. AAMA 2605 "Voluntary Specification, Performance Requirements and Test Procedures for Superior Performing Organic Coated Panels." American Architectural Manufacturers Association
- B. American National Standards Institute (ANSI):
 - 1. ANSI Z97.1 "Safety Glazing Materials Used in Buildings - Specifications and Methods of Test."
- C. American Society for Testing and Materials (ASTM):
 - 1. ASTM B 136 "Standard for Measurement of Strength of Aluminum."
 - 2. ASTM B 137 "Standard for Measurement of Corrosion Resistance of Anodically Coated Aluminum."
 - 3. ASTM B 244 "Standard for Measurement of Thickness of Aluminum and of Other Nonconductive Coatings by Eddy Current Instruments."
 - 4. ASTM C 1036 "Standard Specification for Flat Glass."
 - 5. ASTM C 1048 "Standard Specification for Heat-Treated Flat Glass - Kind HS, Kind FT Coated and Uncoated Glass."
 - 6. ASTM D 3359 "Standard Test Methods for Measuring Adhesion by Tape Test."
 - 7. ASTM D 5235 "Standard Test Method for Microscopical Measurement of Dry Film Thickness of Coatings on Wood Products."

REVIEWED
By Michael Kyne at 1:52 am, Mar 26, 2021

APPROVED
Montgomery County
Historic Preservation Commission



**CLAD SWINGING DOORS AND SIDELIGHTS
Aspen Swing Doors and Sidelights**

- 8. ASTM D 5572 "Standard Specification for Adhesives Used for Finger Joints in Nonstructural Lumber Products."
- 9. ASTM D 5751 "Standard Specification for Laminate Joints in Nonstructural Lumber Products."
- 10. ASTM E 283 "Standard Test Method for Rate of Air Leakage Through Exterior Windows, Curtain Walls, and Doors."
- 11. ASTM E 330 "Standard Test Method for Structural Performance of Exterior Windows, Curtain Walls, and Doors by Uniform Static Air Pressure Difference."
- 12. ASTM E 547 "Standard Test Method for Water Penetration of Exterior Windows, Curtain Walls, and Doors by Cyclic Static Air Pressure Differential."
- 13. ASTM F 588 "Standard Test Methods for Measuring the Forced Entry Resistance of Window Assemblies, Excluding Glazing Impact."
- D. Canadian Standards Association
 - 1. AAMA/WDMA/CSA 101./I.S.2/A440-08 "NAFS – North American Fenestration Standard/Specification for windows, doors and skylights."
 - 2. CSA A440S1-09 "Canadian Supplement to AAMA/WDMA/CSA 101/I.S.2/A440, NAFS – North American Fenestration Standard/Specification for windows, doors and skylights."
- E. Consumer Products Safety Commission:
 - 1. 16 CFR, Part 1201 "Safety Standard for Architectural Glazing Material."
- F. National Fenestration Rating Council (NFRC):
 - 1. NFRC 100 "Procedure for Determining Fenestration Products U-Factors."
 - 2. NFRC 200 "Procedure for Determining Fenestration Product Solar Heat Gain Coefficients at Normal Incidence."
 - 3. NFRC 300 "Procedure for Determining Solar Optical Properties of Simple Fenestration Product."
- G. Window and Door Manufacturers Association (WDMA):
 - 1. AAMA/WDMA/CSA 101/I.S.2/A440 "Standard/ Specification for windows, doors, and unit skylights".
 - 2. WDMA I.S.4 "Industry Standard for Millwork." Window

REVIEWED Preservative Non-Pressure and Door Manufacturers Association (WDMA):
By Michael Kyne at 1:52 am, Mar 26, 2021

1.3 DEFINITIONS

- A. U Cog: Units Btu/(hr•ft²•°F), center-of-glass U value. portion of the window which one sees through that is
- B. U/R Total: Value of total unit calculated per NFRC 100 is the primary measure of winter energy efficiency. A through the unit due to exterior air and roomside air to 1/U.
- C. SHGC: The solar heat gain coefficient of the total fenestration heat gain through the system relative to the incident solar surface. Solar Heat Gain Ratings are determined in accordance with NFRC 300.
- D. Vtc: The visible transmittance of the total fenestration on the visible portion of the solar spectrum where sensitivity is determined by the eye's response. Visible Transmittance Ratings are determined per NFRC 300.

APPROVED
Montgomery County
Historic Preservation Commission



1.4 PERFORMANCE REQUIREMENT

- A. Performance Grade SD-LC-PG40, AAMA/WDMA/CSA 101/I.S.2/A440-08:
 - 1. Air Infiltration, ASTM E 283: Maximum 0.30 cfm/ft. at 1.57 psf (25 mph).
 - 2. Water Resistance, ASTM E 547: No leakage at 6.00 psf (48.41 mph).
 - 3. Structural Performance, ASTM E 330: Withstands up to +/-40 psf (125 mph).
 - 4. Operating Force: 30 lbg to open, 20 lbg to maintain motion.

**CLAD SWINGING DOORS AND SIDELIGHTS
Aspen Swing Doors and Sidelights**

- 5. Forced Entry: Grade 25
- 6. [clad XO] [clad OLO]

1.5 THERMAL PERFORMANCE RATING

- A. Glazing Type and Finish: clad.
 - 1. Center of Glass U Value (U Cog), NFRC 100: [_____].
 - 2. U Tot. NFRC 100: [_____].
 - 3. Solar Heat Gain Coefficient (SHGC), NFRC 200: [_____].
 - 4. Visible light transmission (Vtc), NFRC 300: [_____].

1.6 COATING PERFORMANCE

- A. Primer shall comply with testing in accordance with ASTM D 3359 and ASTM D 5235.

1.7 SUBMITTALS

- A. Provide submittals under provisions of Division 1.
- B. Product Data: Include the following for each type of door required.
 - 1. Construction details and fabrication methods.
 - 2. Profiles and dimensions of individual components.
 - 3. Data on hardware, accessories, and finishes.
 - 4. Recommendations for maintenance and cleaning of exposed surfaces.
- C. Shop Drawings: Include information not fully detailed in manufacturer's product data and include the following for each type of door required.
 - 1. Fabrication, layout and installation details, including anchors.
 - 2. Typical door elevations.
 - 3. Full size section details of typical composite members, including reinforcement.
 - 4. Hardware, including operators.
 - 5. Glazing details.
 - 6. Accessories.
- D. Samples: Submit one corner section

REVIEWED

Submit color samples as appropriate.

By Michael Kyne at 1:52 am, Mar 26, 2021

1.8 QUALITY ASSURANCE

- A. Manufacturer Qualifications: Manufacturer shall have not less than ten years, with similar projects that have than ten years.
- B. Obtain wood door units through one source from a single
- C. Safety Glass Standard: Provide products complying with States Consumer Product Safety Commission's 16 CFR 1201.10 or as prescribed by local codes. Provide products complying with
 - 1. Subject to compliance with project requirements, products marked with certification label of Safety Glazing Institute or certification agency acceptable to authorities having jurisdiction.
- D. Insulated Glass Certification: Provide insulated glass units or on at least one component pane of units with appropriate agency.
- E. WDMA Hallmark Certification: Provide products that have been certified as having been manufactured in accordance with WDMA Hallmark standards. Compliance is verified through independent third party product testing and semi-annual inspections of the manufacturing facility.
- F. Wood Components Sustainability Standards: Provide products that have been certified by independent third parties and labeled as having been produced in compliance with the accepted principles of sustainable forest management. Current certification systems that

APPROVED
Montgomery County
Historic Preservation Commission



**CLAD SWINGING DOORS AND SIDELIGHTS
Aspen Swing Doors and Sidelights**

meet this standard of sustainability include the SFI™ or Sustainable Forestry Initiative (independent third-party verification), the ISO 14001 EMS program, the FSC (Forest Stewardship Council) system, and the CSA (Canadian Standards Association) certification system.

1.9 DELIVERY, STORAGE, AND HANDLING

- A. Ship units with both temporary and permanent NFRC labeling.
 - 1. Temporary label shall indicate that the unit is NFRC certified and include brief product description and thermal or energy performance values.
 - 2. Permanent label shall include manufacturer identification and performance tracking for life of product.
- B. Deliver in original packaging, undamaged, with instructions.
- C. Store off ground and protect from weather.

1.10 WARRANTY

- A. Insulated Glass: Provide manufacturer's limited warranty against failure of air seal due to defects in materials or workmanship for period of 20 years from date of manufacture.
- B. Wood Components, Hardware, and Weatherstripping: Provide manufacturer's ten year limited warranty against defects in workmanship or materials which might unreasonably affect product's normal functioning.
- C. Metal Clad Warranty:
 - 1. Residential 2605 Metal Clad Warranty: Provide manufacturer's 30 year limited warranty on metal clad coating against cracking or checking; 25 year limited warranty on metal clad coating against color change; 20 year warranty on metal clad coating against chalking or peeling (adhesion loss).
 - 2. Commercial 2605 Metal Clad Warranty: Provide manufacturer's 20 year limited warranty on metal clad coating against cracking, checking, color change, chalking or peeling (adhesion loss) in normal conditions; 10 year limited warranty on metal clad coating against cracking, checking, color change, chalking or peeling (adhesion loss) in extreme conditions.
 - 3. 2604 Metal Clad Warranty: Provide manufacturer's 10 year limited warranty on metal clad coating against cracking, checking, color change, chalking or peeling (adhesion loss). (2604 powder coating available in Heritage Collection Textured Series only.)

REVIEWED
By Michael Kyne at 1:52 am, Mar 26, 2021

PART 2 PRODUCTS


2.1 MANUFACTURERS

- A. Acceptable Manufacturers: Sierra Pacific Windows, 800-824-7744; www.sierrapacificwindows.com
- B. Substitutions: Not permitted.

2.2 MATERIALS

- A. Wood: Ponderosa Pine, kiln dried to moisture content for fabrication; water-repellent preservative treated in accordance with manufacturer's instructions.
 - 1. Grade and Grain:
 - a. Interior Exposed Wood: Solid clear, suitable for staining or painting.
- B. Aluminum Cladding: Extruded 6063 T5 grade aluminum.
 - 1. Frame Cladding Thickness: 0.062 inch.
 - 2. Panel Cladding Thickness: 0.075 inch.
- C. Glazing: Provide manufacturer's standard glazing material.

APPROVED
Montgomery County
Historic Preservation Commission



**CLAD SWINGING DOORS AND SIDELIGHTS
Aspen Swing Doors and Sidelights**

1. Insulated Glass (IG): 3/4 inch total thickness separated by 1/2 inch silicone foam Super Spacer® system from Edgetech.

2.3 COMPONENTS

A. Hardware:

1. Multi-point Locking System:
 - a. Active Leaf: 3-point lock.
2. Lever handle with key lock controls engaging and releasing of bolts at head and sill.
 - a. Handle Style: [Munchen]
 - b. Escutcheon Style: 374.
3. Deadbolt.
4. Latch.
5. Hinges: Standard butt hinge, 4 inches by 4 inches, [adjustable hinge, includes set and guide hinges].
 - a. Provide three hinges on 80 inch and 82 inch height doors.
6. Strike Plates: Door manufacturer's heavy gage type.
7. Head and Sill Strike Plates: Stainless Steel. Door manufacturer's heavy gage type.

B. Sill: Extruded aluminum sill with pultruded fiberglass threshold /thermal break.

1. Strike plate: Stainless Steel.
2. Strike plate anchor: Glass-filled Nylon.
3. Sill Plugs: Glass-filled Nylon.

C. Weatherstripping:

1. Head and Side Jamb: Vinyl-covered foam weatherstrip.
2. Panels: Vinyl-covered foam weatherstrip around entire perimeter.
3. Panel Tops: Leaf type weatherstrip.
4. Panel Bottoms: Aluminum track with vinyl sweep.
5. Sill: Vinyl-covered foam weatherstrip.

D. Drip Cap: Extruded aluminum clad drip cap factory mounted to frame.

2.4 FABRICATION

- A. Fabricate units that are reglazable from interior without dismantling.
- B. Factory assemble unit to include frame, astragals, drip cap, and operating hardware.

C. Basic Jamb:

1. Basic Jamb Width: 4-9/16 inches.

D. Frame Head: Fabricate with stainless steel strike plate

E. Panels:

1. Stile and Rail Thickness: 2-1/4 inches.
2. Stile Width: 4-5/8 inches.
3. Top Rail Width: 4-5/8 inches.
4. Bottom Rail Width: 6-13/16 inches.
5. Attach solid, edge-glued rails to laminated engineered fluted dowels. Seal with exterior glue.
6. Fabricate with phenolic high density laminate material on sides of stiles.

F. Glued and Laminated Components: Comply with ASTM D 6012 and ASTM D 6011.

G. Cladding:

1. Clad exterior wood surfaces with extruded aluminum.
2. Fabricate frame cladding to meet frame weatherstripping.
3. Seal clad frame corners with silicone, along with butyl pads, and secure with stainless steel screws.
4. Fabricate frame extrusion with continuous integral nail flange.

REVIEWED

By Michael Kyne at 1:52 am, Mar 26, 2021

APPROVED

Montgomery County

Historic Preservation Commission



**CLAD SWINGING DOORS AND SIDELIGHTS
Aspen Swing Doors and Sidelights**

- 5. Fabricate exterior of frame with accessory groove to accept retrofit trim system or clad brickmould.
- H. Glazing: Fabricate door unit with fifteen lites.
- I. Muntins:
 - 1. Fabricate interior simulated divided lite (simulite) bars of wood.
 - 2. Fabricate exterior simulated divided lite (simulate) bars of aluminum clad.
 - 3. Permanently apply muntins to both interior and exterior of glass surface using VHB acrylic adhesive tape.
 - 4. Muntin Profile and Width:
 - a. Traditional: 7/8 inch.
- J. Sill:
 - 1. Outswing Doors: Fabricate sill with strike plate and anchor for multi-point lock system.

2.5 FINISHES

- A. [Interior Exposed Wood: Factory apply acrylic latex primer.]
- B. Exterior Finish Cladding: To be manufacturer's pre-treated aluminum surface with baked on, electrostatically applied super durable polyester powder paint, zero-VOC finish conforming to specified AAMA 2604 or AAMA 2605 test procedures. Color specified from one of the seven available design collections. Please refer to our website www.sierrapacificwindows.com, or contact your SPW representative to view this expansive color palette.
 - 1. Manufacturer's super durable polyester powder; 1.5 to 2.5 mil dry film thickness.
 - a. Factory finish to comply with AAMA 2604. Color: White.
 - 1) Textured Collection.
- C. Drip Cap: Match frame color.
- D. Exposed Hardware:
 - 1. Interior / Exterior Operating Lever Handle / Escutcheon Set / Strike Plates: Satin nickel
 - 2. Hinges:
 - a. Outswing Resista satin n
- E. Sill:
 - 1. Exposed Aluminum: Anodized

REVIEWED
By Michael Kyne at 1:52 am, Mar 26, 2021

PART 3 EXECUTION

3.1 EXAMINATION

- A. Site Verification of Conditions: Verify installation conditions and other sections are acceptable for product installation per manufacturer's instructions.
- B. Verify that field measurements are acceptable to suit.
- C. Verify sill plate is level.
- D. Verify supports and anchors are correctly and securely installed.
- E. [Verify masonry surfaces are dry and free of excess mortar and debris.]
- F. [Verify wood frame walls are dry, clean, sound, well-ventilated, and free of moisture at joints. Ensure that nail heads are driven flush with wall surfaces in opening and within 6 inches of the corner.]
- G. Scheduling of installation implies that substrate and conditions are prepared and ready for product installation. Proceeding with installation implies installer's acceptance of substrate and conditions.

APPROVED

Montgomery County

Historic Preservation Commission



3.2 PREPARATION

- A. Coordinate door installation with wall flashings and other built-in components.

**CLAD SWINGING DOORS AND SIDELIGHTS
Aspen Swing Doors and Sidelights**

- 3.3 INSTALLATION
 - A. Install door units, hardware, and components in accordance with manufacturer's instructions and approved shop drawings, in compliance with specified performance requirements, and to provide weathertight construction.
 - B. Anchor components rigidly and securely to building structure, plumb and level, accurately fitted, and free from distortion or defects.
 - C. Fit exposed connections to form tight hairline joints.
- 3.4 ADJUSTING
 - A. Adjust doors, hardware, and weatherstripping to provide tight fit at contact points, smooth operation, and weathertight closure.
- 3.5 CLEANING
 - A. Clean interior and exterior surfaces immediately after installation in accordance with manufacturer's recommendations for cleaning and maintenance.
 - B. Remove temporary labels from surfaces.
 - C. Remove and replace glass damaged during construction period.
- 3.6 PROTECTION
 - A. Protect door units from damage or deterioration until Substantial Completion.

END OF SECTION

PART 4

REVIEWED

By Michael Kyne at 1:52 am, Mar 26, 2021

APPROVED

Montgomery County

Historic Preservation Commission



Sierra Pacific Windows
P.O. Box 8489
Red Bluff, CA 96080
Toll Free Tel: 800.824.7744
Web: www.sierrapacificwindows.com

GENERAL

1.1 SECTION INCLUDES

- A. Aluminum clad exterior/ wood interior Casement / Awning windows with hardware.

1.2 RELATED SECTIONS

- A. Section 01330 - Submittal Procedures.
- B. Section 01600 - Product Requirements.
- C. Section 06100 - Rough Carpentry.
- D. Section 06200 - Finish Carpentry.
- E. Section 07900 - Joint Sealers.
- F. Section 08810 - Glass and Glazing.
- G. Section 09900 - Painting: Interior painting of primed wood frame, door and trim.

1.3 REFERENCES

- A. AAMA - American Architectural Manufacturers Association:
 - 1. AAMA 2604 - Voluntary Specification for High Performance Organic Coatings on Aluminum Extrusions and Panels
 - 2. AAMA 2605 - Voluntary Specification, Performance Requirements and Test Procedures for High Performance Organic Coatings on Aluminum Extrusions and Panels
- B. AAMA/WDMA/CSA - American Architectural Manufacturers Association/Canadian Standards Association:
 - 1. AAMA/WDMA/CSA 101./I.S.2/A440-11 - Standard Specification for Aluminum Unit Skylights.
- C. ANSI - American National Standards Institute:
 - 1. ANSI Z97.1 - American National Standard for Safety Glazing Materials - Safety Performance Specifications and Methods of Testing
 - 2. ANSI-SMA-1004 - Aluminum Tubing Framing Screens
- D. ASTM - American Society for Testing and Materials:
 - 1. ASTM C1036 - Standard Specification for Flat Glass.
 - 2. ASTM C1048 - Standard Specifications for Heat-Treated Glass - Kind HS, Kind FT Coated and Uncoated Glass.
 - 3. ASTM E283 - Standard Test Method for Determining the Rate of Air Leakage through Exterior Windows, Curtain Walls and Doors Under Specified Pressure Difference Across the Specimen.

REVIEWED

By Michael Kyne at 1:52 am, Mar 26, 2021

APPROVED

Montgomery County
Historic Preservation Commission



**ALUMINUM CLAD/WOOD WINDOWS
Standard Casement/Awning (WI)**

- 4. ASTM E330 - Standard Test Method for Structural Performance of Exterior Windows, Curtain Walls and Doors by Uniform Static Air Pressure Difference.
- 5. ASTM E547 - Standard Test Method for Water Penetration of Exterior Windows, Curtain Walls and Doors by Cyclic Static Air Pressure Difference.
- 6. ASTM E2188 - Standard Test Method for Insulating Glass Unit Performance.
- 7. ASTM E2189 - Standard Test Method for Testing Resistance to Fogging in insulated Glass.

- E. FS – Federal Specification
 - 1. FS L-S-125B – Screen, Insect Non-Metallic.

- F. IGCC - Insulated Glass Certification Council.

- G. IGMA – Insulating Glass Manufacturers Alliance.

- H. NAAMM - National Association of Architectural Metal Manufacturers - Metal Finishes Manual for Architectural and Metal Products.

- I. NFRC - National Fenestration Rating Council:
 - 1. NFRC 102 – Procedure for Measuring the Steady-State Thermal Transmittance of Fenestration Systems.
 - 2. NFRC 200 – Procedures for Determining Fenestration Product Solar Heat Gain Coefficient and Visible Transmittance at Normal Incidence.
 - 3. NFRC 500 – Procedure for Determining Fenestration Product Condensation Resistance Values.
 - 4. Energy Star Compliant Models available.

1.4 DEFINITIONS

- A. Performance Class Designations:
 - 1. R (Residential): Commonly used in one and two-family dwellings.
 - 2. LC (Light Commercial): Commonly used in offices, libraries and low-rise motels.
 - 3. CW or C (Commercial): Commonly used in hotels and retail sales buildings.
 - 4. AW or H (Heavy Commercial): Commonly used in high-rise buildings where increased loading requirements and limits on deflection and extreme use of the fenestration products is expected. Schools, institutions, dormitories, government or public buildings where heavy use of fenestration products is expected.

- B. Performance Grade (PG) Designations: Actual design pressure following the type and class designation in pounds force per square foot.

- C. Minimum test size: The smallest size unit permitted for performance class. Products must be tested at the minimum test size or at a size that complies with requirements for performance class.

REVIEWED
By Michael Kyne at 1:52 am, Mar 26, 2021

APPROVED
Montgomery County
Historic Preservation Commission



1.5 PERFORMANCE REQUIREMENTS.

- A. Air infiltration (air leakage) shall not exceed the following when tested at 1.57 psf when tested in accordance with ASTM E283: 0.30 cfm per square foot of frame.

- B. Water penetration resistance - There shall be no water penetration when tested at 7.52 psf pressure in accordance with ASTM E547.

**ALUMINUM CLAD/WOOD WINDOWS
Standard Casement/Awning (WI)**

- C. Structural load testing - Product shall meet the damaged and permanent deflection pass/fail criteria as stated in AAMA/WDMA/CSA 101 I.S.2/A440-11 when tested in accordance with ASTM E330.

1.6 SUBMITTALS

- A. Shop Drawings: Submit under provisions of Section 01300.
- B. [Product Data]: Submit manufacturer's catalog data on each product to be used in accordance with Section 01330. Include glazing system and two complete sets of color chips representing manufacturer's full range of available colors.
- C. Samples: Submit corner section in accordance with Section 01330. Include glazing system and two complete sets of color chips representing manufacturer's full range of available colors.

1.7 QUALITY ASSURANCE

- A. Manufacturer Qualifications:
 - 1. A manufacturer capable of fabricating wood windows that meet or exceed performance requirements indicated and of documenting this performance by inclusion in lists and by labels, test reports, and calculations.
- B. Installer Qualifications:
 - 1. An installer acceptable to wood window manufacturer for installation of units required for this Project.
- C. Product Requirements:
 - 1. Comply with AAMA/WDMA 101/I.S.2/NAFS, "North American Fenestration Standard Voluntary Performance Specification for Windows, Skylights and Glass Doors," for definitions and minimum standards of performance, materials, components, accessories, and fabrication unless more stringent requirements are indicated.
 - 2. Comply with published recommendations of manufacturers and with GANA's "Glazing Manual" unless more stringent requirements are indicated.

REVIEWED
By Michael Kyne at 1:52 am, Mar 26, 2021

1.8 DELIVERY, STORAGE, AND HANDLING

- A. Store products in manufacturer's unopened packaging in a clean, dry area until ready for installation.
- B. Prime or seal wood surfaces if more than 30 days between

APPROVED
Montgomery County
Historic Preservation Commission



1.9 PROJECT CONDITIONS

- A. Field Measurements: Verify wood window openings by field measurements and indicate measurements on Shop Drawings.
- B. Maintain environmental conditions (temperature, humidity, etc.) as recommended by manufacturer for optimum results. Do not exceed environmental conditions outside manufacturer's absolute limits.

1.10 WARRANTY

- A. Warranty: Provide manufacturer's standard warranty as follows.
 - 1. Workmanship and Materials: 10-year limited warranty.
 - 2. Insulating Glass: 20-year limited warranty (Residential and Commercial).
 - 3. Exterior Clad Finish:

**ALUMINUM CLAD/WOOD WINDOWS
Standard Casement/Awning (WI)**

- a. Commercial 2605 Metal Clad: 20-year limited warranty on metal clad coating against cracking, checking, color change, chalking or peeling (adhesion loss) in normal conditions; 10 year limited warranty on metal clad coating against cracking, checking, color change, chalking or peeling (adhesion loss) in extreme conditions.
- b. Residential 2605 Metal Clad: 30-year limited warranty on metal clad coating against cracking or checking.
- c. Commercial and Residential 2604 Metal Clad Warranty: 10-year limited warranty on metal clad coating against cracking, checking, color change, chalking or peeling (adhesion loss).
- 4. Interior Finish: 2-year limited warranty.
- 5. Warranty Labor: 2-year limited warranty.

PART 2 PRODUCTS

2.1 MANUFACTURERS

- A. Acceptable Manufacturers: Sierra Pacific Windows, Red Bluff, CA, Medford and Merrill, WI. 800-824-7744; www.sierrapacificwindows.com
- B. Substitutions: Not permitted.

2.2 APPLICATIONS/SCOPE

Refer to Window Schedule on the drawings for application and location.

A. Aluminum Clad Casement:

- 1. Aluminum Clad Operating Casement as manufactured by Sierra Pacific Windows.
 - a. Performance: CW-PG50, standard product, maximum size 36.1875 inches (919mm) by 84.1875 inches (2138mm). Single Units Only.
 - b. Performance: CW-PG30, maximum size 42.1875 inches (1072mm) by 84.1875 inches (2138mm). Single Units Only. With Limit Device.
 - c. Performance: LC-PG50, standard product, maximum size 36.1875 inches (919mm) by 72.1875 inches (1833mm). Single or Muller Units.
 - d. Performance: LC-PG25, standard product, maximum size 36.1875 inches (919mm) by 96.1875 inches (2443mm). Single or Muller Units.
- 2. Operating Hardware: Truth Encore E-Guard dual action, 90 degree opening, 180 degree closing. Standard adjustable hinges with optional thermal break.
 - a. Optional Coastal Corrosion finish.
- 3. Locking Hardware: Single lever, multi-lock system.

REVIEWED
By Michael Kyne at 1:52 am, Mar 26, 2021

APPROVED
Montgomery County
Historic Preservation Commission



2.3 GLAZING

- A. Premium quality flat glass complying with ASTM C 1036.
- B. Factory-Glazed Fabrication: Comply with requirements of 101/I.S.2/NAFS.
 - 1. Safety Glass: Provide laminated and tempered products meeting the performance requirements in 16 CFR 1201, for Category II materials.
- C. Interior Glazed.
- D. Glass Type: Standard Low-E Insulated Glass (IG).
 - 1. Optional glazing:
 - a. Clear IG (no coatings)
- E. Glass Type: Standard 1/4" Monolithic Clear (no coatings).

**ALUMINUM CLAD/WOOD WINDOWS
Standard Casement/Awning (WI)**

- F. Grilles
 - 1. Type:
 - a. Simulated Divided Lite (SDL): Combination of applied wood interior grille bars, spacer within the airspace of the IG, with applied exterior grille bars using superior 3M tape.
 - 2. Profile:
 - a. Interior Removable Wood Surround.
 - 1) Traditional, 7/8 inch (22 mm) width. (Surround with concealed clip only).
 - b. GBG.
 - 1) 5/8 inch (16 mm) width Flat.
 - 2) 11/16 inch (17.5 mm) width Contour.
 - 3) 1 inch (25.4 mm) width Contour
 - c. Simulated Divided Lite (SDL)
 - 1) Traditional 7/8 inch (22 mm) width.
 - 3. Pattern:
 - a. Equal.

2.4 CONSTRUCTION

- A. Frame: 1-1/4" (32mm) thick frame, 0.050" (1.27mm) extruded aluminum, mitered corners mechanically fastened with injectable corner keys, and interior wood for head, sill and jamb, kiln dried to a moisture content of 6-12% at time of fabrication. Interior wood stops blind fastened from the perimeter of the frame.
- B. Sash: 1-11/16" (44 mm) thick sash, 0.050" (1.27mm) thick extruded aluminum and wood interior, sash corners tenoned and mechanically fastened.
- C. Interior: Solid wood species. Finish as scheduled
 - 1. Pine (standard).
- D. Coreguard Plus: Wood parts are treated in accordance with WDMA I.S.4.
- E. Extension Jamb: As indicated.
- F. Weatherproofing: Dual weatherstrip system perimeter of frame with secondary PVC bulb type weatherstrip applied to all four sides of the sash.

REVIEWED
By Michael Kyne at 1:52 am, Mar 26, 2021

2.5 FINISH

- A. Interior Finish: []
 - 1. Primed Wood.
- B. **** NOTE TO SPECIFIER **** Delete if not required.

2.6 HARDWARE

- A. Finish:
 - 1. White. (Standard)

2.7 SCREENS

- A. Removable insect screens provided for each operating sash, fitted to the interior of the window unit, with integral lift rail and top leaf springs.
- B. Screen fabric is 18x16 fiberglass mesh. Charcoal fiberglass cloth standard. Charcoal aluminum, bright aluminum, better vue and ultra vue mesh optional.

APPROVED
Montgomery County
Historic Preservation Commission



- C. Screen Finish: [Matched to selected hardware finish].

2.8 FABRICATION

- A. Fabricate wood windows in sizes indicated.
- B. Weather Stripping: Provide full-perimeter weather stripping for each operable sash and ventilator, unless otherwise indicated.
- C. Factory machine windows for openings and for hardware that is not surface applied.
- D. Mullions: Provide mullions and cover plates as shown, matching window units, complete with anchors for support to structure and installation of window units.

PART 3 EXECUTION

3.1 EXAMINATION

- A. Do not begin installation until substrates have been properly prepared.
- B. If substrate preparation is the responsibility of another installer, notify Architect of unsatisfactory preparation before proceeding.

3.2 PREPARATION

- A. Clean surfaces thoroughly prior to installation.
- B. Prepare surfaces using the methods recommended by the manufacturer for achieving the best result for the substrate under the project conditions.

3.3 INSTALLATION

- A. Install in accordance with manufacturer's

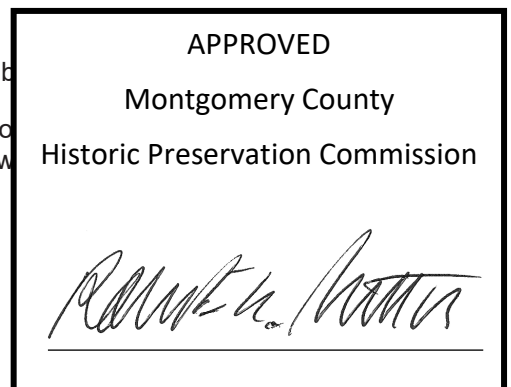
REVIEWED

By Michael Kyne at 1:52 am, Mar 26, 2021

3.4 PROTECTION

- A. Protect installed products until completion of project.
- B. Touch-up, repair or replace damaged products before Sub
- C. Finished Windows: Replace windows that are damaged o
Windows may be repaired or refinished if work complies w
evidence of repair or refinishing.

END OF SECTION





CSI PRODUCT SPECIFICATION

SECTION 085213-8

METAL-CLAD WOOD WINDOWS Westchester Double/Single Hung Westchester Double Hung Picture/Transom

Sierra Pacific Windows
P.O. Box 8489
Red Bluff, CA 96080
Toll Free Tel: 800.824.7744
Web: www.sierrapacificwindows.com

GENERAL

1.1 SECTION INCLUDES

- A. Aluminum clad exterior/ wood interior Westchester Double/Single Hung windows with hardware, Westchester Picture and Transom windows.

1.2 RELATED SECTIONS

- A. Section 01330 - Submittal Procedures.
- B. Section 01600 - Product Requirements.
- C. Section 06100 - Rough Carpentry.
- D. Section 06200 - Finish Carpentry.
- E. Section 07900 - Joint Sealers.
- F. Section 08810 - Glass and Glazing.
- G. Section 09900 - Painting: Interior painting of primed wood frame, door and trim.

REVIEWED

By Michael Kyne at 1:52 am, Mar 26, 2021

1.3 REFERENCES

- A. AAMA - American Architectural Manufacturers Association
 - 1. AAMA 2604 - Voluntary Specification, Performance Procedures for High Performance Organic Coat Panels.
 - 2. AAMA 2605 - Voluntary Specification, Performance Procedures for High Performance Organic Coat Panels.
 - 3. AAMA 611 – Voluntary Specification for Anodizing
- B. AAMA/WDMA/CSA - American Architectural Manufacturers Association/Canadian Standards Association
 - 1. AAMA/WDMA/CSA 101./I.S.2/A440-11 - Standard Specification for Windows, Doors and Unit Skylights.
- C. ANSI - American National Standards Institute:
 - 1. ANSI Z97.1 - American National Standard for Safety Glazing Materials Used in Buildings - Safety Performance Specifications and Methods of Test.
 - 2. ANSI-SMA-1004 – Aluminum Tubing Framing Screens for Windows.

APPROVED

Montgomery County
Historic Preservation Commission



**METAL-CLAD WOOD WINDOWS
Westchester Double/Single Hung
Westchester Double Hung Picture/Transom**

- D. ASTM - American Society for Testing and Materials:
 - 1. ASTM C1036 - Standard Specification for Flat Glass.
 - 2. ASTM C1048 - Standard Specifications for Heat-Treated Glass - Kind HS, Kind FT Coated and Uncoated Glass.
 - 3. ASTM E283 - Standard Test Method for Determining the Rate of Air Leakage through Exterior Windows, Curtain Walls and Doors Under Specified Pressure Difference Across the Specimen.
 - 4. ASTM E330 - Standard Test Method for Structural Performance of Exterior Windows, Curtain Walls and Doors by Uniform Static Air Pressure Difference.
 - 5. ASTM E413 and E90 – Standard Test Method for Laboratory Measurement of Airborne Sound Transmission Loss of Building Partitions and Elements.
 - 6. ASTM E547 - Standard Test Method for Water Penetration of Exterior Windows, Curtain Walls and Doors by Cyclic Static Air Pressure Difference.
 - 7. ASTM E2188 - Standard Test Method for Insulating Glass Unit Performance.
 - 8. ASTM E2189 - Standard Test Method for Testing Resistance to Fogging in insulated Glass.
- E. IGCC - Insulated Glass Certification Council.
- F. IGMA – Insulating Glass Manufacturers Alliance.
- G. NFRC - National Fenestration Rating Council:
 - 1. NFRC 102 – Procedure for Measuring the Steady-State Thermal Transmittance of Fenestration Systems.
 - 2. NFRC 200 – Procedure for Determining Fenestration Product Solar Heat Gain Coefficient at Normal Incidence.
 - 3. NFRC 300 – Procedure for Determining Solar Optical Properties of Simple Fenestration Product.
 - 4. Energy Star Compliant Models
- H. WDMA I.S.4 – Industry Specification for

REVIEWED
By Michael Kyne at 1:52 am, Mar 26, 2021

1.4 DEFINITIONS

- A. Performance Class Designations:
 - 1. R (Residential): Commonly used in one and two family dwellings.
 - 2. LC (Light Commercial): Commonly used in low-rise professional offices, libraries and low-rise motels.
 - 3. CW or C (Commercial): Commonly used in low-rise factories, hotels and retail sales buildings.
 - 4. AW or H (Heavy Commercial): Commonly used where frequent and extreme use of the fenestration product is required in hospitals, schools, institutions, dormitories, government buildings where heavy use of fenestration product is required.

APPROVED

Montgomery County

Historic Preservation Commission



- B. U-Value: Is a thermal transmittance, or the heat loss through a structural element. It is the rate of transfer of heat through a structure, divided by the difference in temperature across that structure.
- C. SHGC: The solar heat gain coefficient of the total fenestration system represents the solar heat gain through the system relative to the incident solar radiation striking the exterior surface. Solar Heat Gain Ratings are determined in accordance with NFRC 200.



CSI PRODUCT SPECIFICATION

SECTION 085213-8

METAL-CLAD WOOD WINDOWS Westchester Double/Single Hung Westchester Double Hung Picture/Transom

- D. Vtc: The visible transmittance of the total fenestration system is the transmittance across the visible portion of the solar spectrum where sensitivity to each wave length is weighted by the eye's response. Visible Transmittance Ratings are determined in accordance with NFRC 300.
 - E. Performance Grade (PG) Designations: Actual design pressure that is designated by a number following the type and class designation in pounds force per square foot.
 - F. Minimum test size: The smallest size unit permitted for performance class (gateway test size). Products must be tested at the minimum test size or at a size larger than minimum test size to comply with requirements for performance class.
- 1.5 PERFORMANCE REQUIREMENTS.

- A. Air infiltration (air leakage) shall not exceed the following when tested at 1.57 psf when tested in accordance with ASTM E283: 0.30 cfm per square foot of frame.
- B. Water penetration resistance - There shall be no water penetration when tested at 7.52 psf pressure in accordance with ASTM E547.
- C. Structural load testing - Product shall meet the damaged and permanent deflection pass/fail criteria as stated in AAMA/WDMA/CSA 101 I.S.2/A440-11 when tested in accordance with ASTM E330.
- D. Sound Transmission Class (STC) – Product shall meet an STC rating of [_____] when tested in accordance to ASTM E413 and ASTM E90.

REVIEWED
By Michael Kyne at 1:52 am, Mar 26, 2021

1.6 THERMAL PERFORMANCE RATING

Repeat following paragraph format for each Glazing Type and its corresponding performance ratings. Refer to Sierra Pacific Performance Guide.

- A. Glazing Type: **Clear Cardinal Spacer**
 - 1. U-Value, NFRC 100: **.45**
 - 2. Solar Heat Gain Coefficient (SHGC), NFRC 200: **.58**
 - 3. Visible Light Transmission (Vtc), NFRC 300: **.58**

APPROVED
Montgomery County
Historic Preservation Commission



1.7 SUBMITTALS

- A. Shop Drawings: Submit under provisions of Section 01330.
- B. [Product Data]: Submit manufacturer's catalog data on each product to be used in accordance with Section 01330. Include glazing system and two complete sets of color chips representing manufacturer's full range of available colors.
- C. Samples: Submit corner section in accordance with Section 01330. Include glazing system and two complete sets of color chips representing manufacturer's full range of available colors.

**METAL-CLAD WOOD WINDOWS
Westchester Double/Single Hung
Westchester Double Hung Picture/Transom**

1.8 QUALITY ASSURANCE

- A. Manufacturer Qualifications:
 - 1. A manufacturer capable of fabricating wood windows that meet or exceed performance requirements indicated and of documenting this performance by inclusion in lists and by labels, test reports, and calculations.
- B. Installer Qualifications:
 - 1. An installer acceptable to wood window manufacturer for installation of units required for this Project.
- C. Product Requirements:
 - 1. Comply with AAMA/WDMA 101/I.S.2/NAFS, "North American Fenestration Standard Voluntary Performance Specification for Windows, Skylights and Glass Doors," for definitions and minimum standards of performance, materials, components, accessories, and fabrication unless more stringent requirements are indicated.
 - 2. Comply with published recommendations of glass manufacturers and with GANA's "Glazing Manual" unless more stringent requirements are indicated.

1.9 DELIVERY, STORAGE, AND HANDLING

- A. Store products in manufacturer's unopened packaging in an upright position off the ground in a clean, dry area until ready for installation.
- B. Prime or seal wood surfaces if more than 30 days between delivery and installation.

1.10 PROJECT CONDITIONS


- A. Field Measurements: Verify wood window openings by field measurements before fabrication and indicate measurements.
- B. Maintain environmental conditions (temperature and humidity) as recommended by manufacturer for optimum results. Do not install products under environmental conditions outside manufacturer's absolute requirements.

REVIEWED
By Michael Kyne at 1:52 am, Mar 26, 2021

1.11 WARRANTY

- A. Warranty: Provide manufacturer's standard warranty
 - 1. Workmanship and Materials: 10-year limited warranty
 - 2. Insulating Glass: 20-year limited residential warranty
 - 3. Exterior Clad Finish:
 - a. Commercial AAMA 2605 Metal Clad: 20-year limited warranty on metal coating against cracking, checking, color change (fading or loss) in normal conditions; 10 year limited warranty on wood coating against cracking, checking, color change, chalking or peeling in normal conditions.
 - b. Residential AAMA 2605 Metal Clad: 30-year limited warranty on metal coating against cracking or checking.
 - c. Commercial and Residential AAMA 2604 Metal Clad Warranty: 10-year limited warranty on metal clad coating against cracking, checking, color change, chalking or peeling (adhesion loss).
 - 4. Interior Finish: 2-year limited warranty.
 - 5. Warranty Labor: 2-year limited warranty.

APPROVED
Montgomery County
Historic Preservation Commission





CSI PRODUCT SPECIFICATION

SECTION 085213-8

METAL-CLAD WOOD WINDOWS Westchester Double/Single Hung Westchester Double Hung Picture/Transom

PART 2 PRODUCTS

2.1 MANUFACTURERS

- A. Acceptable Manufacturers: Sierra Pacific Windows, Red Bluff, CA, Medford and Merrill, WI. 800-824-7744; www.sierrapacificwindows.com
- B. Substitutions: Not permitted.

2.2 APPLICATIONS/SCOPE

Refer to Window Schedule on the drawings for application and location.

- A. Westchester Double/Single Hung:
 - 1. Aluminum Clad Westchester Operating Double/Single Hung as manufactured by Sierra Pacific Windows.
 - a. Performance: LC-PG50, standard product, maximum size 47-1/2 inches (1207mm) by 83-1/2 inches (2121mm). Single unit only.
 - b. Performance: LC-PG30, maximum size 59-1/2 inches (1511mm) by 107-1/2 inches (2731mm). Single unit only.
 - 2. Jamb width: standard 4-9/16 inches (116 mm);
 - 3. Operating Hardware: Combination lock and tilt mechanism with concealed tilt latches in the sash stile.

2.3 GLAZING

- A. Premium quality flat glass complying with ASTM C 1036.

- B. Factory-Glazed Fabrication: Comply with requirements of Section 08810 and with AAMA/WDMA 101/I.S.2/NAFS.

REVIEWED
By Michael Kyne at 1:52 am, Mar 26, 2021

- 1. Safety Glass: Provide laminated requirements in 16 CFR 1201,

- C. Reglazable sandwich-glazed double taped with closed sealant to the exterior.

- D. Glass Type: Standard Low-E 272 [3/4"] Insulated Glass

- E. Grilles

- 1. Type: Simulated Divided Lite (SDL): Combination of glass within the airspace of the IG, with applied edge High Bonded (VHB) tape.
- 2. Profile: Traditional 7/8 inch (22 mm) width.
- 3. Pattern: Equal.

APPROVED
Montgomery County
Historic Preservation Commission

2.4 CONSTRUCTION

- A. Operating Frame: 5/8" inch (16mm) thick frame, 6/4 pine finger joint [solid] head and jambs kiln dried to a moisture content of 6-12% at time of fabrication. Mitered 0.063" (1.60mm) extruded aluminum exterior with integral nail fins. Sloped sill fabricated with rot and thermally resistant 0.078" (1.98mm) extruded vinyl with integral nail fin, with snap fitted extruded

**METAL-CLAD WOOD WINDOWS
Westchester Double/Single Hung
Westchester Double Hung Picture/Transom**

aluminum sill cover color matched to exterior finish. Side jambs have PVC endcap water management system with integral angled installation leg.

1. Overall frame depth is 5-3/4 inches (147mm), standard
- B. Operating Sash: 1-3/4" (44 mm) thick sash, wood stiles and rails slot and tenon joined at the bottom rail and top rail. Top and bottom sash checkrails are dovetailed to the stiles. Stiles and rails are mechanically fastened and glued with the stiles running through. Extruded 0.055" (1.39 mm) aluminum sash stiles and top rail, 0.063" extruded aluminum bottom rail, are assembled and fastened to the wood sash via a vinyl clip system. Fiberglass interlock on top and bottom sash.
- C. Interior: Solid wood species. Finish as scheduled
 1. Pine (standard).
- D. CoreGuard Plus™: Wood parts are dip treated in accordance with WDMA I.S.4.
- E. Weatherproofing: Combination pile weatherstripping w/center fin and a compressible bulb weatherstrip. Pile weatherstrip on sash at checkrails. Compressible bulb weatherstrip at bottom of bottom sash rail and hollow bulb weatherstrip on top rail of upper sash.

2.5 FINISH

- A. Interior Finish:
 1. Primed Wood.
- B. Exterior Finish: To be manufacturer's pre-treated aluminum surface with baked on, electrostatically applied super durable polyester powder paint, zero-VOC finish conforming to specified AAMA 2605 or AAMA 2604 (Textured Collection only) test procedures. Color specified from one of the industry leading color palettes. Please refer to our website www.sierrapacificwindows.com, or contact your sales representative to view this expansive color palett

REVIEWED
By Michael Kyne at 1:52 am, Mar 26, 2021

2.6 HARDWARE

- A. Finish:
 1. Satin Nickel.

2.7 SCREENS

- A. Screen Frame: Flexscreen (standard) with PVC coated insect screen mesh with no exposed fasteners. Screen 5/16". Full screen fitted in pocketed screen channel for
- B. Screen fabric: 18x16 Charcoal fiberglass mesh (standard)
- C. Screen Finish: Matched to selected exterior clad color.

APPROVED
Montgomery County
Historic Preservation Commission



2.8 FABRICATION

- A. Fabricate wood windows in sizes indicated.
- B. Weather Stripping: Provide full-perimeter weather stripping for each operable sash and ventilator, unless otherwise indicated.



CSI PRODUCT SPECIFICATION

SECTION 085213-8

METAL-CLAD WOOD WINDOWS Westchester Double/Single Hung Westchester Double Hung Picture/Transom

- C. Factory machine windows for openings and for hardware that is not surface applied.
- D. Mullions: Provide mullions and cover plates as shown, matching window units, complete with anchors for support to structure and installation of window units.

PART 3 EXECUTION

3.1 EXAMINATION

- A. Do not begin installation until substrates have been properly prepared.
- B. If substrate preparation is the responsibility of another installer, notify Architect of unsatisfactory preparation before proceeding.

3.2 PREPARATION

- A. Clean surfaces thoroughly prior to installation.
- B. Prepare surfaces using the methods recommended by the manufacturer for achieving the best result for the substrate under the project conditions.

3.3 INSTALLATION

- A. Install in accordance with manufacturer's instructions.

3.4 PROTECTION

- A. Protect installed products until completion of project.
- B. Touch-up, repair or replace damaged products immediately after Substantial Completion.
- C. Finished Windows: Replace windows if they do not meet or do not comply with specifications. Windows may be repaired or refinished if the work complies with requirements and shows no evidence of repair or refinishing.

REVIEWED
By Michael Kyne at 1:52 am, Mar 26, 2021

END OF SECTION

APPROVED
Montgomery County
Historic Preservation Commission



OPEN A WORLD OF EXTRAORDINARY DOORS.



REVIEWED
By Michael Kyne at 1:54 am, Mar 26, 2021

APPROVED
Montgomery County
Historic Preservation Commission
Robert H. [Signature]

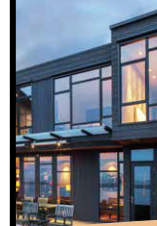
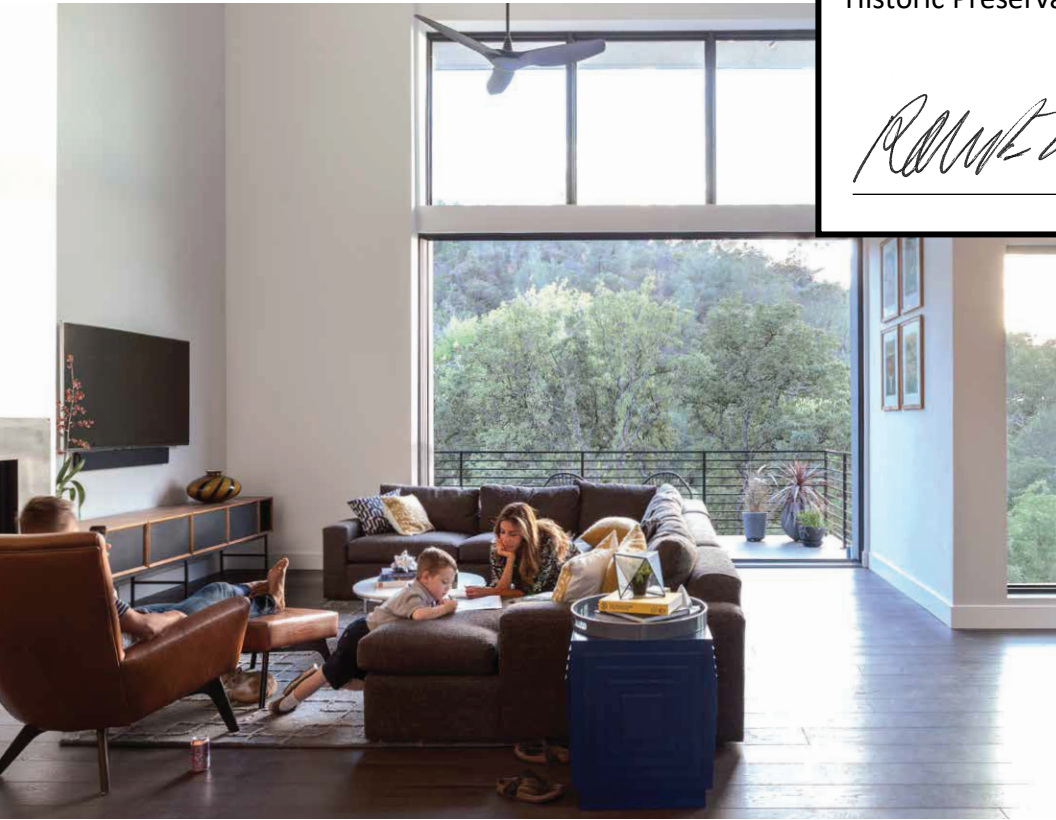
REVIEWED

By Michael Kyne at 1:54 am, Mar 26, 2021

APPROVED

Montgomery County

Historic Preservation Commission



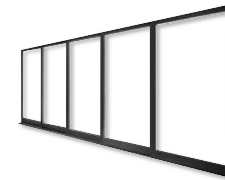
At Sierra Pacific, we've been building exceptional light commercial and residential door designs for some time. With new advancements in door technology, we now have even more configurations to share, each created to highlight or complement any design you can imagine, each crafted with the same meticulous attention to detail and longevity as our windows.

On the following pages, you'll find extraordinary options in specialty, swinging, sliding and entrance doors. Come on in and find the idea your next project needs to open up its full potential.

MORE POSSIBILITIES, MORE ATTENTION TO DETAIL.



BI-FOLD
Pages 6-9



MULTI-SLIDE
Pages 10-13



LIFT & SLIDE
Pages 14-15



SWINGING
Pages 22-33



SLIDING
Pages 36-39



SIDELITES & TRANSOMS
Pages 42-45

REVIEWED

By Michael Kyne at 1:54 am, Mar 26, 2021

APPROVED

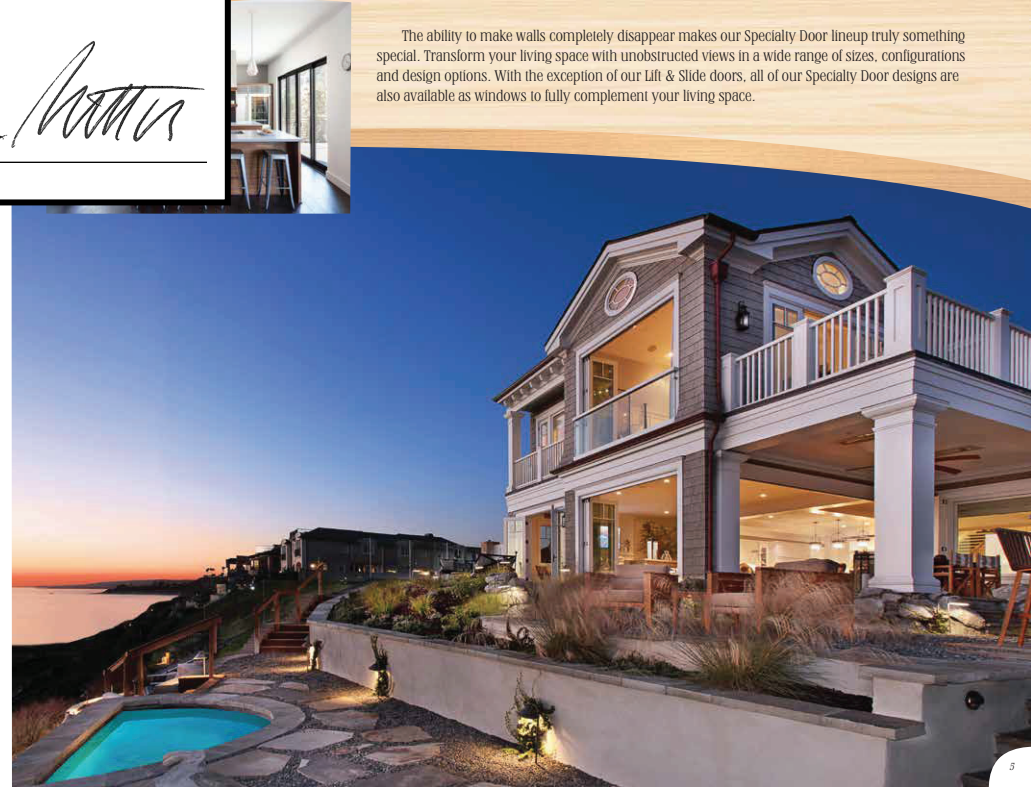
Montgomery County

Historic Preservation Commission

SPECIALTY DOOR
A BEAUTIFUL ADD
TO ANY DESIGN



The ability to make walls completely disappear makes our Specialty Door lineup truly something special. Transform your living space with unobstructed views in a wide range of sizes, configurations and design options. With the exception of our Lift & Slide doors, all of our Specialty Door designs are also available as windows to fully complement your living space.



REVIEWED

By Michael Kyne at 1:54 am, Mar 26, 2021

APPROVED

Montgomery County
Historic Preservation Commission



BI-FOLD DOORS



WITH A FEATHER TOUCH.

Hinged to fold and glide with the lightest touch, our bi-fold doors are available up to 45 feet wide and 10 feet high.

Stack them to one or both sides, swing them in or out, go around 90-degree corners. You can even incorporate an access door panel to go in or out without moving your entire wall. And now it's available in our FeelSafe line, for storm-prone areas.



REVIEWED

By Michael Kyne at 1:54 am, Mar 26, 2021

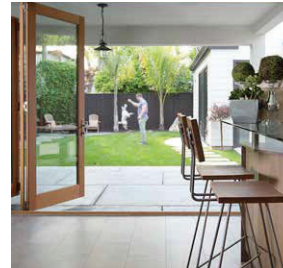
APPROVED

Montgomery County

Historic Preservation Commission



BI-FOLD DOORS
& WINDOWS.



REVIEWED

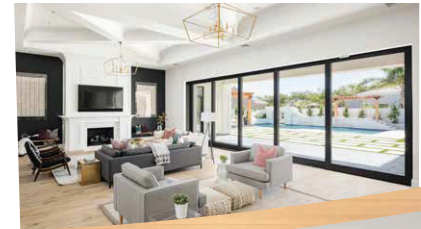
By Michael Kyne at 1:54 am, Mar 26, 2021

APPROVED
Montgomery County
Historic Preservation Commission



MULTI-AMAZING.

on. Slide them in the other direction. Stack them to
a pocket in the wall. Turn a 90-degree corner into
and windows are engineered to give you years



REVIEWED

By Michael Kyne at 1:54 am, Mar 26, 2021

APPROVED

Montgomery County
Historic Preservation Commission



**MULTI-SLIDE DOORS
& WINDOWS**

Combine a multi-slide door and window to effortlessly open a wall and built-in bar to an open dining area.

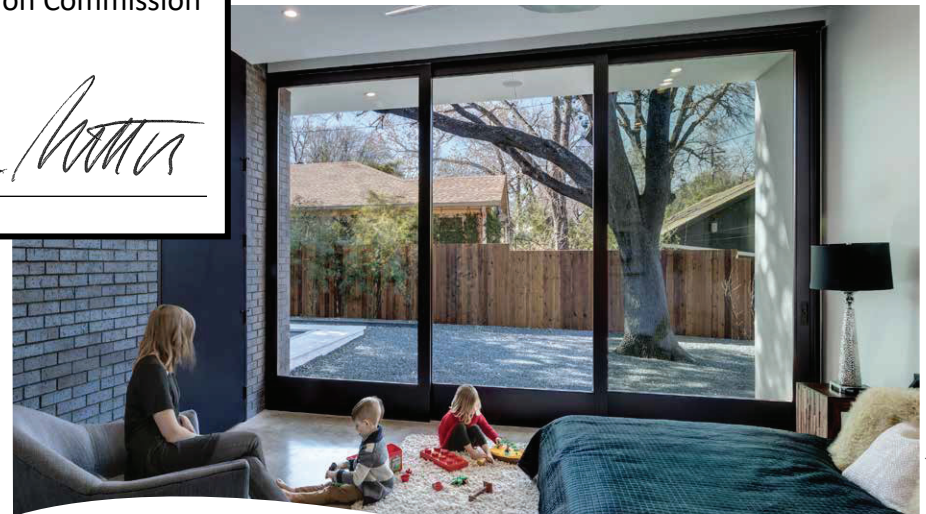
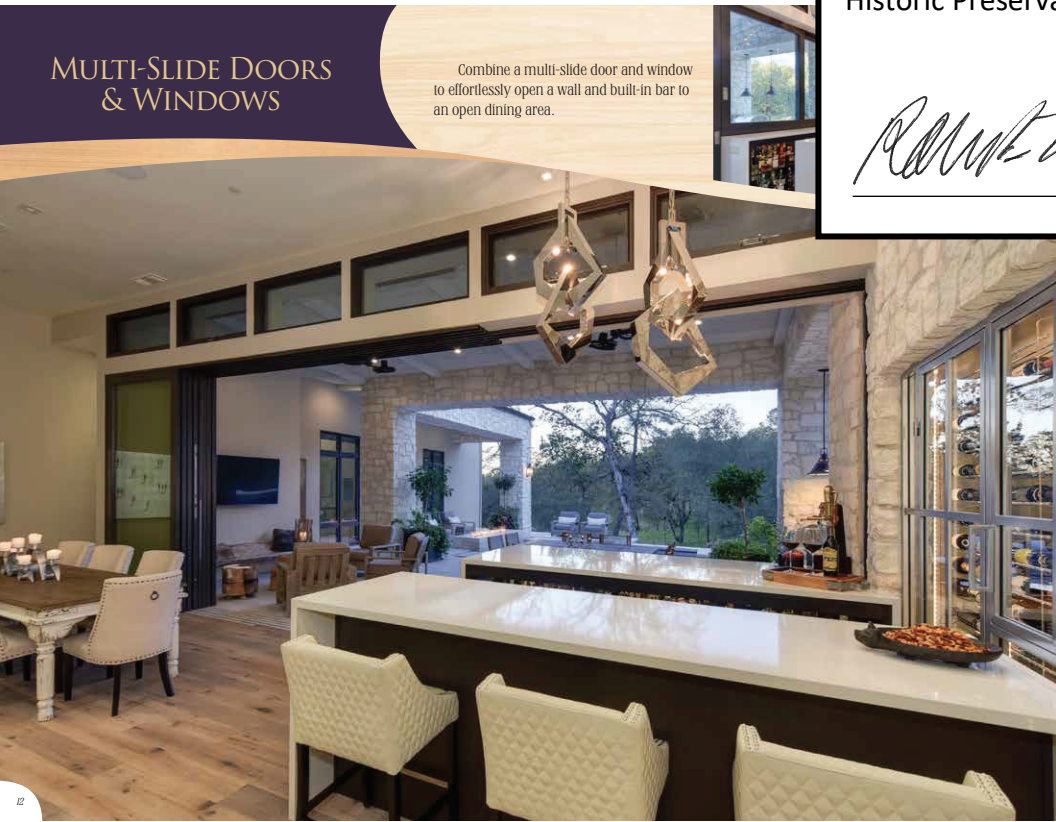


Photo: Cherie Davis Smith - M.A. K. Miller Architects

REVIEWED

By Michael Kyne at 1:54 am, Mar 26, 2021

APPROVED

Montgomery County

Historic Preservation Commission



AND DEFY GRAVITY.

No wonder it's being called a game changer. Ingenious mechanics raise the door panels to glide effortlessly, then lower them down to seal out the elements. With an advanced weep system to handle rainfall exposure, certification up to PG50 and a pocketing configuration, this door changes everything.

LIFT AND SLIDE



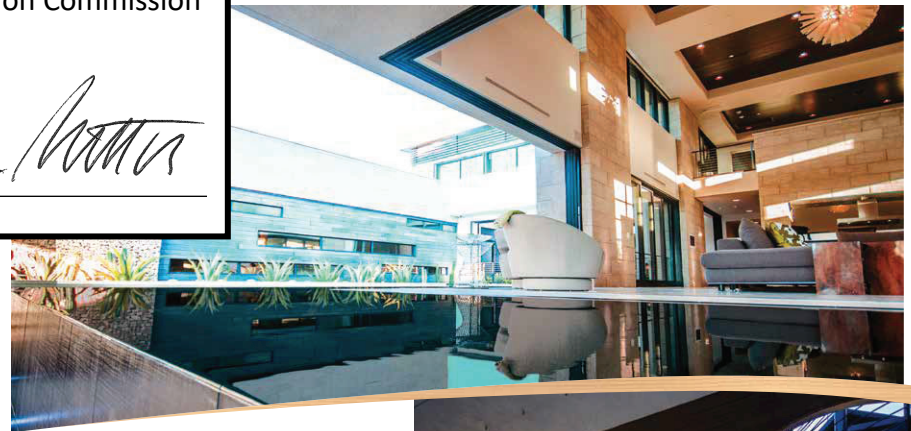
REVIEWED

By Michael Kyne at 1:54 am, Mar 26, 2021

APPROVED
Montgomery County
Historic Preservation Commission



TURN A CORNER INTO A CONVERSATION.



Every corner of a living space provides more opportunities for expanded views and seamless transition, which is why we've engineered our bi-fold and multi-slide doors and windows to take full advantage of 90 and 270 degrees.

By reducing mass and increasing glass, we're able to transform a normal corner into a point of interest with a beautiful view.



REVIEWED

By Michael Kyne at 1:54 am, Mar 26, 2021

APPROVED

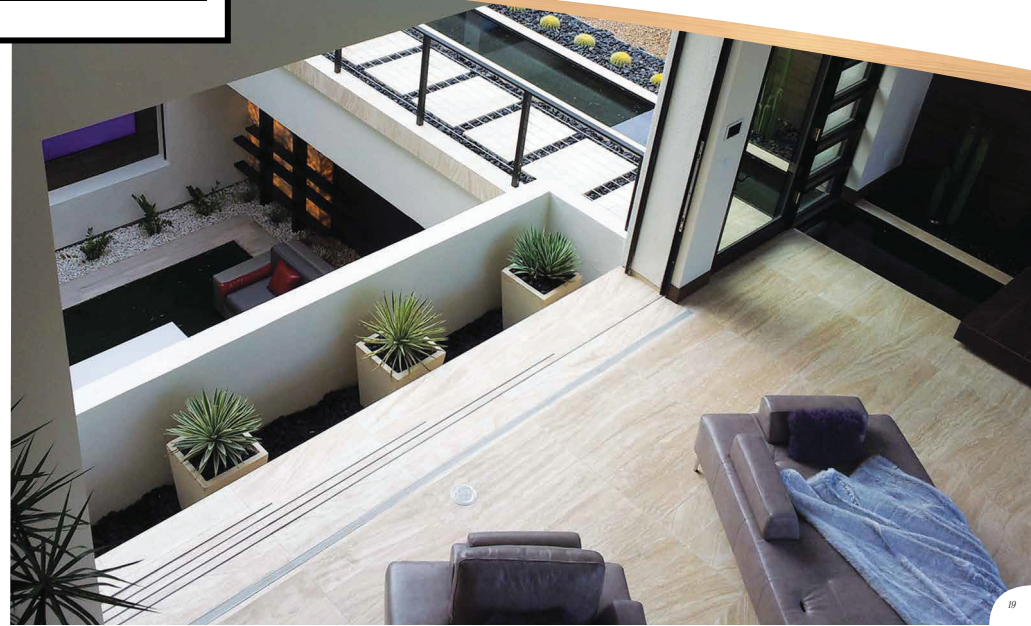
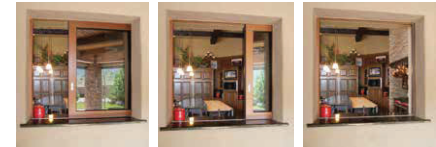
Montgomery County
Historic Preservation Commission



VANISHING ACTS PERFORMED DAILY.

...doors don't just open, they disappear completely.
...ing systems for our multi-slide doors and windows

...alls, even the widest expanses of glass can be stowed
...out open air and spacious living.



REVIEWED

By Michael Kyne at 1:54 am, Mar 26, 2021

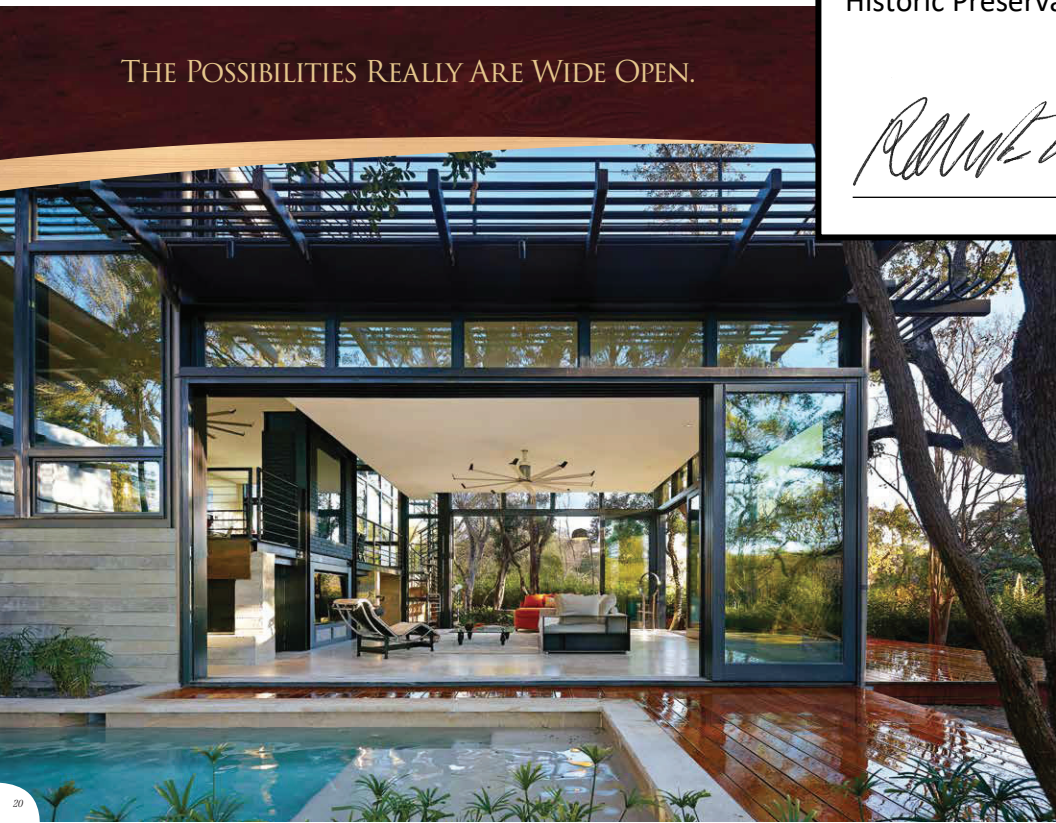
APPROVED

Montgomery County

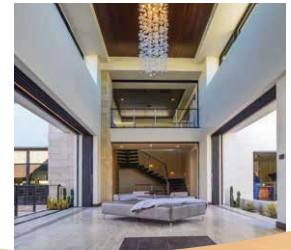
Historic Preservation Commission



THE POSSIBILITIES REALLY ARE WIDE OPEN.



...ce, with light, with transitions, with boundaries.
...your opening or how specific your design needs,
...eated to please. If it's a design you like, chances are
...more than happy to find just the right configuration
...life.



REVIEWED

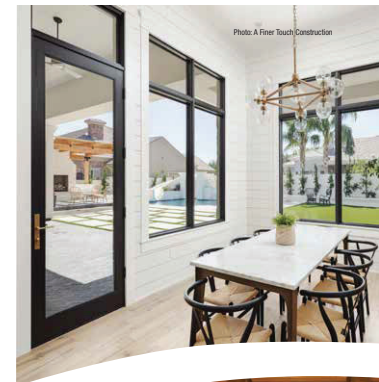
By Michael Kyne at 1:54 am, Mar 26, 2021

APPROVED
Montgomery County
Historic Preservation Commission



DETAILS, BIG IMPRESSION.

transition between inside and outside, both doors operable, just
that you need, you'll find every one of our swinging doors carries
and innovative engineering that sets Sierra Pacific windows and



REVIEWED

By Michael Kyne at 1:54 am, Mar 26, 2021

APPROVED
Montgomery County
Historic Preservation Commission



our swing doors, or experiment with the height and
door with one fixed panel and a sliding screen.
door from Sierra Pacific, you have a lot of other

SO MANY STYLES TO CHOOSE.



INSWING, OUTSWING,
ANY WAY YOU LIKE IT.

The movement of a door affects movement through the room.
With swinging doors offered in nearly every configuration imaginable,
we think you'll find a Sierra Pacific combination that moves you.



REVIEWED

By Michael Kyne at 1:54 am, Mar 26, 2021

APPROVED

Montgomery County
Historic Preservation Commission



els add a richness and traditional
charm. Experiment with our combinations,
world of design sensibility.



REVIEWED

By Michael Kyne at 1:54 am, Mar 26, 2021

APPROVED
Montgomery County
Historic Preservation Commission



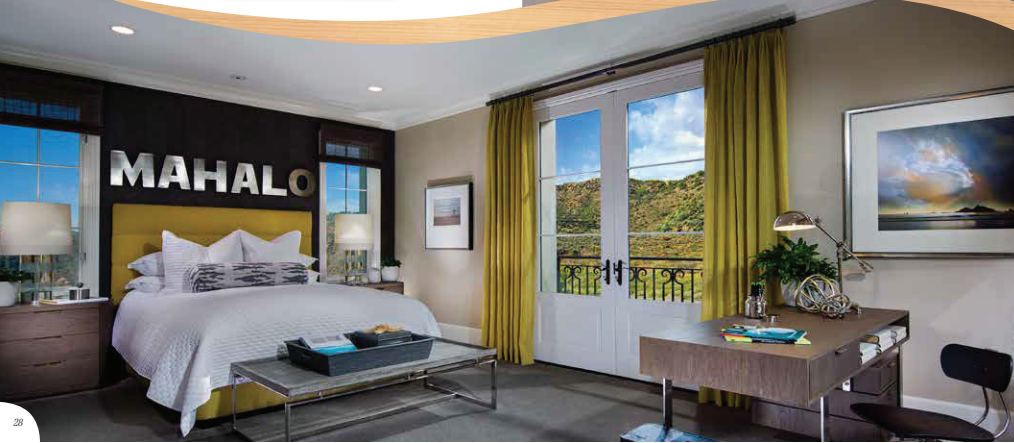
The combinations of vertical lengths (stiles) and horizontal lengths (rails) give panel doors their unique textured design which can create a striking accent between two spaces.



GO DUTCH.



Extra ventilation? Easy pass through? Whatever the reason, you're sure to love the utility of a door with a top and bottom panel that operate independently. Sometimes it's smart to be this functional.



REVIEWED

By Michael Kyne at 1:54 am, Mar 26, 2021

APPROVED
Montgomery County
Historic Preservation Commission



open, inviting, beautiful and secure? You trust our
from fully glazed to partially paneled, radius top to
acific doors make an entrance statement that
gn.

MAKE A GRAND ENTRANCE.



REVIEWED

By Michael Kyne at 1:54 am, Mar 26, 2021

APPROVED

Montgomery County
Historic Preservation Commission



WITH ENTRANCE DOORS THAT
WELCOME YOUR DESIGN.



Create a remarkable and distinctive look with our
new pivot doors. Coming soon.



REVIEWED

By Michael Kyne at 1:54 am, Mar 26, 2021

APPROVED
Montgomery County
Historic Preservation Commission



...T BEAUTIES.

...uminum cladding and equipped
...r commercial swinging doors
...ations engineered for years of



REVIEWED

By Michael Kyne at 1:54 am, Mar 26, 2021

APPROVED
Montgomery County
Historic Preservation Commission



SLIDING DOORS



...DOOR, SPACE-SAVING.

When you don't have enough room for a door that swings in or out, or if you just like the elegance of a door that takes up very little space, you'll find our sliding patio doors a beautiful choice. They're available in narrow or French rails, and crafted with precision.



REVIEWED

By Michael Kyne at 1:54 am, Mar 26, 2021

APPROVED

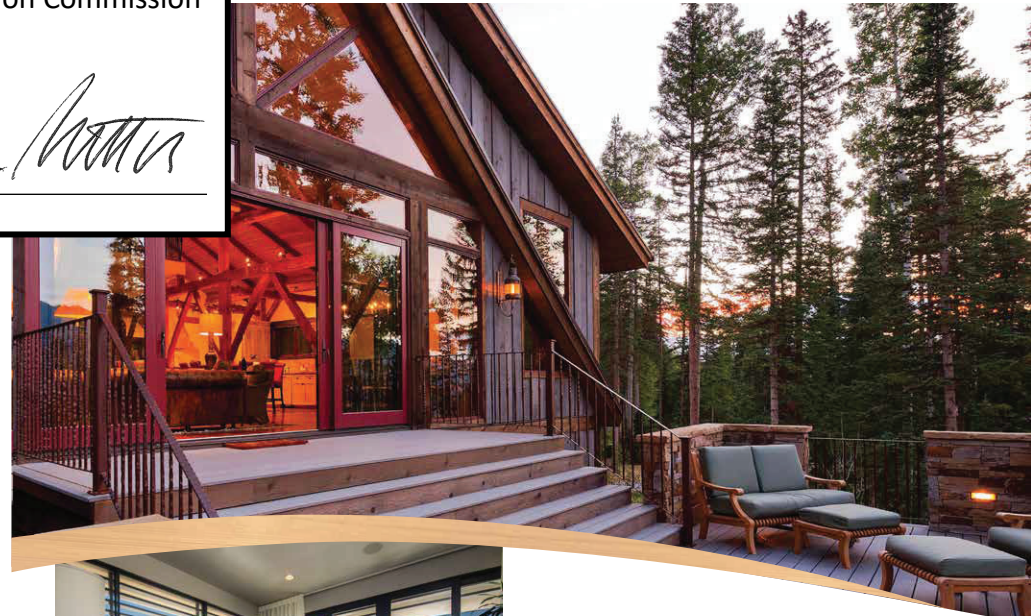
Montgomery County
Historic Preservation Commission



SLIDING DOORS

A MATERIAL IMPROVEMENT

Choose exteriors with luxurious wood or low maintenance cladding. You'll also find vinyl for new construction or replacement. Same exceptional quality, all will give you years of flawless performance.



PRACTICAL, AND CONFIGURABLE.

In addition to being a smart choice for limited space, our sliding doors come in a number of eye-catching configurations to turn a large part of your wall into a large and practical combination of doors and expansive views.

REVIEWED

By Michael Kyne at 1:54 am, Mar 26, 2021

APPROVED

Montgomery County

Historic Preservation Commission



STUNNING VIEWS. STORM-READY.



Withstanding hurricane force winds is something that's not always possible in the coastal region. It's something to live behind. The structural reinforcement give our FeelSafe patio doors the toughest conditions. They meet Zone IV/HVHZ and are designed to enjoy the most beautiful sunsets.



BEAUTIFUL INSIDE, TOUGH OUTSIDE.

Our FeelSafe sliding patio doors are constructed of the strongest, laminated glass to withstand the ugliest storms, while the interior retains the beauty of natural wood.



REVIEWED

By Michael Kyne at 1:54 am, Mar 26, 2021

APPROVED
Montgomery County
Historic Preservation Commission



SIDELITES AND TRANSOMS



AL ACCENT

entive with your door style?
of matching sidelites and
ul Sierra Pacific door into



REVIEWED

By Michael Kyne at 1:54 am, Mar 26, 2021

APPROVED
Montgomery County
Historic Preservation Commission



TRANSOMS
ADD PRESENCE TO ANY OPENING.

A transom above a doorway can be light and give your space a roomier appearance. Fitted with a sash and frame to match your door, a transom can be installed as a direct set to let in even more light.

SIDELITES
STUNNING AND USEFUL.

Stationary or vented, add sidelites that are perfectly integrated with your door style. From recognizing a visitor to some additional ventilation, you'll love the expanded view.



REVIEWED

By Michael Kyne at 1:54 am, Mar 26, 2021

APPROVED
Montgomery County
Historic Preservation Commission



DRESSING UP YOUR DOORS.



HARDWARE



Your door handles and locking mechanisms should be pleasing to the eye and to the touch. So we make ours from forged brass and finish them with equal parts beauty and toughness.



Customize your new Sierra Pacific doors and windows, you'll be...
want. Accessorize your doors to make a statement, or to blend

EXTERIOR

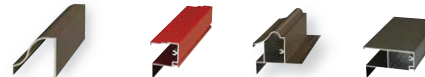


COLORS INSPIRED BY NATURE.

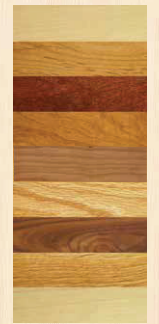
Extruded aluminum twice as thick as roll-form cladding is coated with a unique, industry-leading AAMA 2604 or 2605 powder-coated finish in an unprecedented 75 colors, with textured finishes and custom color matching also available.

TRIM TO ACCENT YOUR DESIGN.

Several choices of exterior trim in wood or aluminum cladding bring your outside design together completely.



INTERIOR



THE NATURAL BEAUTY OF WOOD.

The way natural wood enriches your interior can't be overstated. We offer nine species of exceptional grain and depth to give your interior design a timeless appeal. In fact, as long as the wood is viable, we'll craft your order out of almost any species you choose.

REVIEWED

By Michael Kyne at 1:54 am, Mar 26, 2021

APPROVED
Montgomery County
Historic Preservation Commission

EVEN YOUR GLASS CAN
BE CUSTOMIZED.

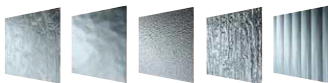
Solar heat gain, damaging UV rays, hot climates, privacy concerns, all can be to your exact needs thanks to a range of decorative glass options.

can take an ordinary sheet of glass ordinary or traditional masterpiece. To that mulated divided lite bar profiles and a style all their own.

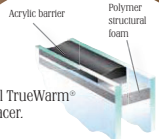
LIGHT PATTERNS
TO TRANSFORM YOUR LOOK.



See more decorative glass examples at SierraPacificWindows.com



No-Metal TrueWarm® Edge Spacer.



	3/8"	7/8"	1"	1 1/4"	2"			
Contemporary clad								
Traditional clad								
Putty clad						Frame	Equal	Many patterns and custom available.

REVIEWED

By Michael Kyne at 1:54 am, Mar 26, 2021

APPROVED
Montgomery County
Historic Preservation Commission



BI-FOLD DOOR & WINDOW FEATURES AND SPECIFICATIONS

- Available in both inswing and outswing configurations.
- Available in wood exterior or fully extruded, durable aluminum clad exterior.
- Wood species include Ponderosa Pine, Douglas Fir, Knotty Alder and other species upon request.
- Extruded aluminum clad exteriors feature 74 AAMA 2605 & AAMA 2604 powder-coat colors and anodized finishes.
- The door panels and window sash match the profile of other Sierra Pacific product for a clean, consistent look.
- The weight of bi-fold doors and windows is carried by the header.
- The minimum jamb thickness for inswing and wood exterior products is 6 9/16".
- The bi-fold door accommodates openings up to approximately 23' wide and 10' tall.
- Available with 4 5/8" or 3 3/8" stiles.
- 4 5/8" Stiles are engineered.
- 3 3/8" Stiles are LVL. Maximum height is 96".
- Standard glass options apply, although some obscure glass patterns may not be available due to size limitations.
- Protected by our exclusive CoreGuard Plus™, the industry's best wood protection.

THE E-3 DOOR SYSTEM

- Available with 1 3/4" or 2 1/4" thick panels.
- Maximum panel height 120" for 2 1/4" panel, 96" for 1 3/4" panel.
- Maximum panel width 48".
- Maximum panel weight 250 pounds.
- E-3 hardware has been tested in-house to LC-25 (outswing only, 36" x 96" - 3 panel configuration)

THE E-4 DOOR SYSTEM (Clad Outswing Only)

- Available with 2 1/4" thick panels.
- Maximum panel height 120".
- Maximum panel width 51".
- Maximum panel weight 350 pounds.

SINGLE PANEL BI-FOLD & ACCESS DOORS

- Matching single panel swing doors and sidelights are available.
- Access panels are available in most configurations and allow egress with the folding panels in the closed position.
- Units with an access panel feature standard multi-point locking systems with trim set.

CORNER MULLS

- 90 degree corner mull with specific operations
- 270 degree corner mull with specific operations

BI-FOLD WINDOW

- The bi-fold window accommodates openings up to approximately 23' wide and 10' tall.
- 36" x 84" maximum sash size.
- E3 hardware.
- Multi-point locking hardware on operable sash.
- Window sash features 2 5/16" LVL stiles and rails.
- Hardware finish options are bronze or satin nickel.
- Corner mulls available.

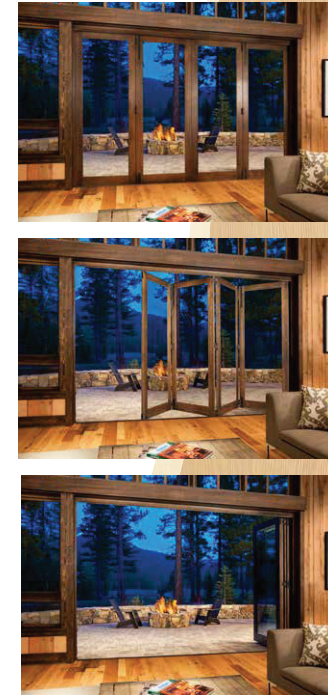
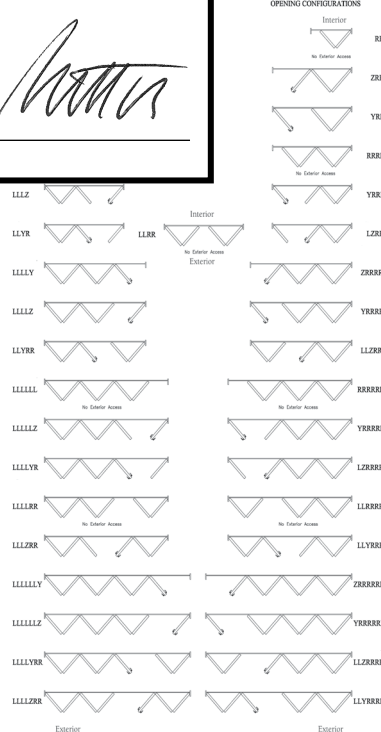
HARDWARE

- Heavy duty hinges with stainless steel bearings for corrosion resistance and smooth operation. The number of hinges varies with the panel or sash height. The hinges are available in 32D brushed stainless steel, PVD brass and bronze powder coat finishes.
- T-shaped pull handles are integrated into the design for ease of operation.
- Symphonic style flushbolts: The length of the top flushbolts can vary according to the panel or sash height. The flushbolts are available in brushed aluminum, PVD brass and bronze powder coated finishes.
- Access door trimset hardware is available in several profiles and finishes.
- The clad outswing head track is powder coated to match the frame, while the inswing and all-wood product head track is 024 Bronze powder coat.

SILL TRACK

- Sills are available in our standard water resistant design, as well as low profile ADA or U-channel designs in a bronze anodized finish.
- Bi-fold products with our standard sill carry the standard Sierra Pacific Limited Warranty. Request a copy from your sales representative or visit sierrapacificwindows.com to download.

RIGHT OPENING CONFIGURATIONS



T handles.
Hidden Flush Bolts optional with specific configurations.
Access door multi-point locking hardware available in multiple styles and finishes.

Standard Flush Bolts.

REVIEWED

By Michael Kyne at 1:54 am, Mar 26, 2021

APPROVED
 Montgomery County
 Historic Preservation Commission



MULTI-SLIDE DOOR & WINDOW FEATURES AND SPECIFICATIONS

- Available in stacking or pocketing units.
- Available in single or multi-directional configurations.
- Wood species include Ponderosa Pine, Douglas Fir, Knotty Alder and other species by request.
- Extruded aluminum clad exteriors feature 74 AAMA 2605 & AAMA 2604 powder coat colors and anodized finishes.
- The door panels and window sash match the profile of other Sierra Pacific products for a clean, consistent look.
- Accommodates openings up to 23' wide and 10' tall.
- Single directional, up to 5 panels.
- Multi-directional, up to 10 panels.
- 1 3/4" or 2 1/4" Panel thickness.
- 2 1/4" Max panel width 60", max height 119 1/2".
- 1 3/4" Max panel width 48", max height 96".
- Available with 4 5/8" or 3 3/8" stiles.
- Panels are clad in .075" extra heavy-duty extruded aluminum.
- Full selection of performance glazing and designer options including hardware finishes, decorative glass, and grilles.
- Protected by our exclusive CoreGuard Plus®, the industry's best wood protection.

Note: Due to low profile sill track, multi-slide door systems carry no water infiltration performance rating. Application requires consideration of potential exposure to weather events and elevation/location of the door system. Protection afforded by special installation techniques such as stepped sill applications and overhangs can help offset potential for water intrusion.

HARDWARE

- Two heavy-duty 2 1/8" stainless steel precision bearing rollers are installed in each panel for a smooth-as-silk glide.
- Flush finger pull in oil rubbed bronze or satin nickel finish.
- Multi-point lock system on leading panel.
- Interior finger pull thumb turn activates the multipoint locking mechanism.
- Keyed lock available.

HEAD TRACK

• The head track and side jambs are finished to match the clad panel color. On wood exterior units the head track is 024 Bronze powder coat.

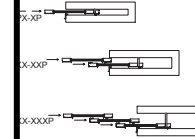
SILL TRACK

- Three heights for sill track.
- Sill track is selected by application.
- Thick Floor-Tall Track is attached to the subfloor 1/8" - 3/16" from the bottom edge of the door.
- Tracks are made of extruded stainless steel caps.
- When the finished surface is visible.

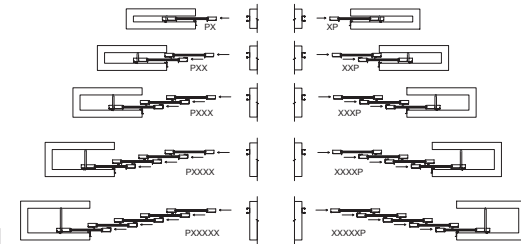
MULTI-SLIDE WINDOWS

- Sierra Pacific Windows multi-slide windows enjoy all of the same great features and construction as our multi-slide doors.
- Create expansive openings up to 23' wide, perfect for a pass through to an outdoor living space.

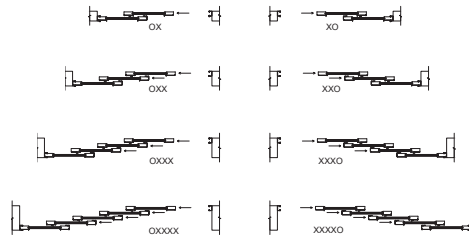
**Multi-Slide Door
 Non-Pocket (Multi Direction)**



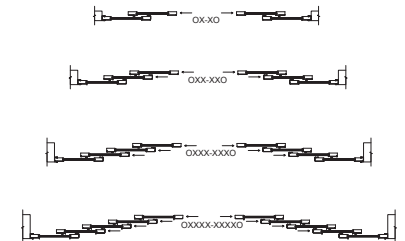
**Clad Multi-Slide Door
 Operation Configuration-Pocket (Single Direction)**



**Clad Multi-Slide Door
 Operation Configuration-Stacked (Single Direction)**



**Clad Multi-Slide Door
 Operation Configuration-Stacked (Multi Direction)**



Flush finger pulls.

Keyed flush finger pulls.



Photo: Charles Davis Smith - AA & Mall Fujisui Architecture

REVIEWED

By Michael Kyne at 1:54 am, Mar 26, 2021

APPROVED
Montgomery County
Historic Preservation Commission



LIFT & SLIDE FEATURES AND SPECIFICATION

- Available in stacking or pocketing units.
- Single and bi-parting operations.
- Wood species include Ponderosa Pine, Douglas Fir, Knotty Alder and other species by request.
- Extruded aluminum clad exteriors feature 74 AAMA 2605 and AAMA 2604 powder coat colors and anodize finishes.
- Accommodates openings up to 45' wide and 10' tall.
- Single direction, up to 5-panels.
- Multi-directional, up to 10-panels.
- Continuous nailing flange is an integral part of the frame extrusion.
- Factory-applied extruded aluminum drip cap standard.
- Sill width 4 5/8". Head rail heights 4 5/8" or 6 13/16". Kick rail heights 6 3/16" or 12". Panels greater than 60" wide require 12" bottom rail.
- 2 1/4" Max panel height 120", max panel width 72".
- Dependent on size and performance requirements, optional structural upgrades available.
- Jamb widths are 7 1/2", 10 1/2", 13 1/2", and 16 1/2" (2, 3, 4, and 5 tracks respectively) including stops applied to the interior.
- Heavy-duty extruded aluminum cladding, .062" thick frame & .075" thick panels.
- Standard glass options apply although some obscure glass patterns may not be available due to size limitations.
- Protected by our exclusive CoreGuard Plus®, the industry's best wood protection.

HARDWARE

- Hardware system operates with lower carriages that roll on an extruded aluminum sill track when the panels are in the lifted position. Carriages and bottom track support the full panel weight. Head tracks guide the door panels during operation.
- Removable handle is standard on stacking systems. SlimLine handles are standard on pocketing systems, to lift and lower panels and move panels along the sill track.
- Multipoint lockset on leading active panel edge. This engages the lock bolts attached to the side jamb.
- Non-keyed flush pull on exterior stile of leading active panel.

SILL TRACK

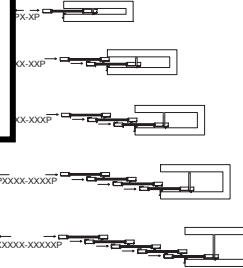
- Innovative exclusive sill design. Low profile drain track made of thermally broken extruded aluminum in a dark bronze anodized finish. Intruding water drains through the exterior weep gates or via installed drain tubes.
- Standard height is 1".

HEAD TRACK

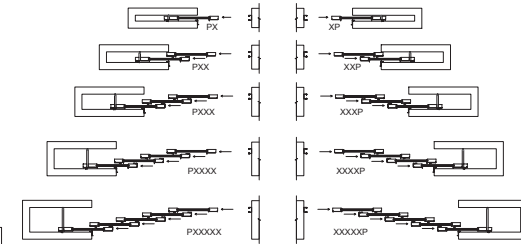
- The head track on aluminum clad exterior product has a powder coat finish to match the clad panel color.



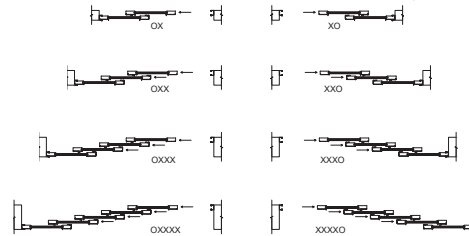
Clad Lift & Slide Door
Operation Configuration-Pocket (Multi Direction)



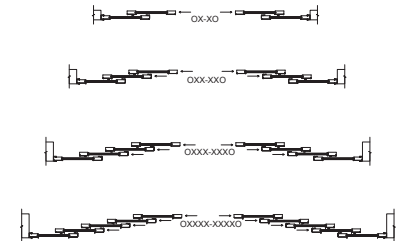
Clad Lift & Slide Door
Operation Configuration-Pocket (Single Direction)



Clad Lift & Slide Door
Operation Configuration-Stacked (Single Direction)



Clad Lift & Slide Door
Operation Configuration-Stacked (Multi Direction)



REVIEWED

By Michael Kyne at 1:54 am, Mar 26, 2021

APPROVED
 Montgomery County
 Historic Preservation Commission



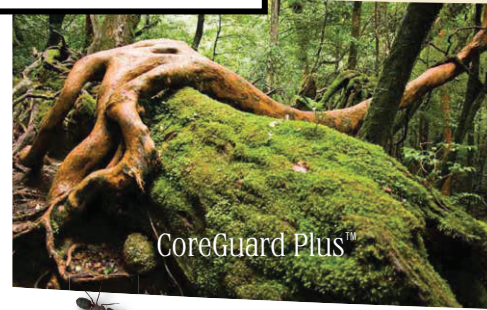
VERTICAL INTEGRATION SETS US APART

Sierra Pacific Windows is part of Sierra Pacific Industries, which owns 1.9 million acres of timberland in California and Washington state. Our vertical integration gives us total control of manufacturing, from planted seed to delivered window and door. The result? Nothing but the best gets passed on to you.



DOORS,
 SUPPORT
 PRODUCTS.

Every Sierra Pacific door and window comes with the full support of our Architectural Services Group and our nationwide network of Architectural Consultants, which means you get what you need when you need it. From the initial designs to the order process and final delivery, these exceptional resources will help answer your questions, streamline your project and support you down the road.



ALL DOORS SHOULD BE
 THIS DEEPLY PROTECTED.

Our wood windows and doors are protected by CoreGuard Plus™ wood treatment, which is to say all our wood products repel water, insects and rot with enough strength to be thoroughly tested in Hawaiian rainforests, and still remain completely intact.



A WARRANTY AS TOUGH
 AS OUR PRODUCTS.

Sierra Pacific windows and doors are backed by our fully transferable 30/20 Limited Warranty (20/10 for commercial products). It provides 30 year residential AAMA 2605 clad exterior coating coverage, 20 year insulated glass coverage, 10 year parts coverage, 2 year labor coverage, and 10 year AAMA 2604 clad exterior coating coverage. For warranty specifics, please refer to SierraPacificWindows.com.

REVIEWED

By Michael Kyne at 1:54 am, Mar 26, 2021



For support and answers to any questions, call 800-824-7744,
or visit SierraPacificWindows.com

APPROVED
Montgomery County
Historic Preservation Commission



Robert H. Patton



**SIERRA
PACIFIC**

WINDOWS THAT
NEVER COMPROMISE

REVIEWED

By Michael Kyne at 1:54 am, Mar 26, 2021

Photo of North Façade from Ethan Allen

APPROVED

Montgomery County
Historic Preservation Commission



REVIEWED

By Michael Kyne at 1:54 am, Mar 26, 2021

Photo of East Façade from
Eastern Property Line



REVIEWED

By Michael Kyne at 1:54 am, Mar 26, 2021

Photo of East Façade
from 2nd Floor



APPROVED
Montgomery County
Historic Preservation Commission

Robert H. [Signature]



Photo of South Façade from
Southern Property Line

REVIEWED

By Michael Kyne at 1:54 am, Mar 26, 2021

APPROVED

Montgomery County

Historic Preservation Commission

Photo of West Façade from
Sycamore Ave.



REVIEWED

By Michael Kyne at 1:54 am, Mar 26, 2021

APPROVED

Montgomery County
Historic Preservation Commission

Robert A. [Signature]



REVIEWED

By Michael Kyne at 1:54 am, Mar 26, 2021

APPROVED

Montgomery County

Historic Preservation Commission

Robert H. [Signature]

7133

North ↑

Ariel Photo