



HISTORIC PRESERVATION COMMISSION

Marc Elrich
County Executive

Sandra I. Heiler
Chairman

Date: April 1, 2020

MEMORANDUM

TO: Hadi Mansouri
Department of Permitting Services

FROM: Michael Kyne
Historic Preservation Section
Maryland-National Capital Park & Planning Commission

SUBJECT: Historic Area Work Permit #906993: Mechanical equipment installation

The Montgomery County Historic Preservation Commission (HPC) has reviewed the attached application for a Historic Area Work Permit (HAWP). This application was **Approved** at the March 25, 2020 HPC meeting.

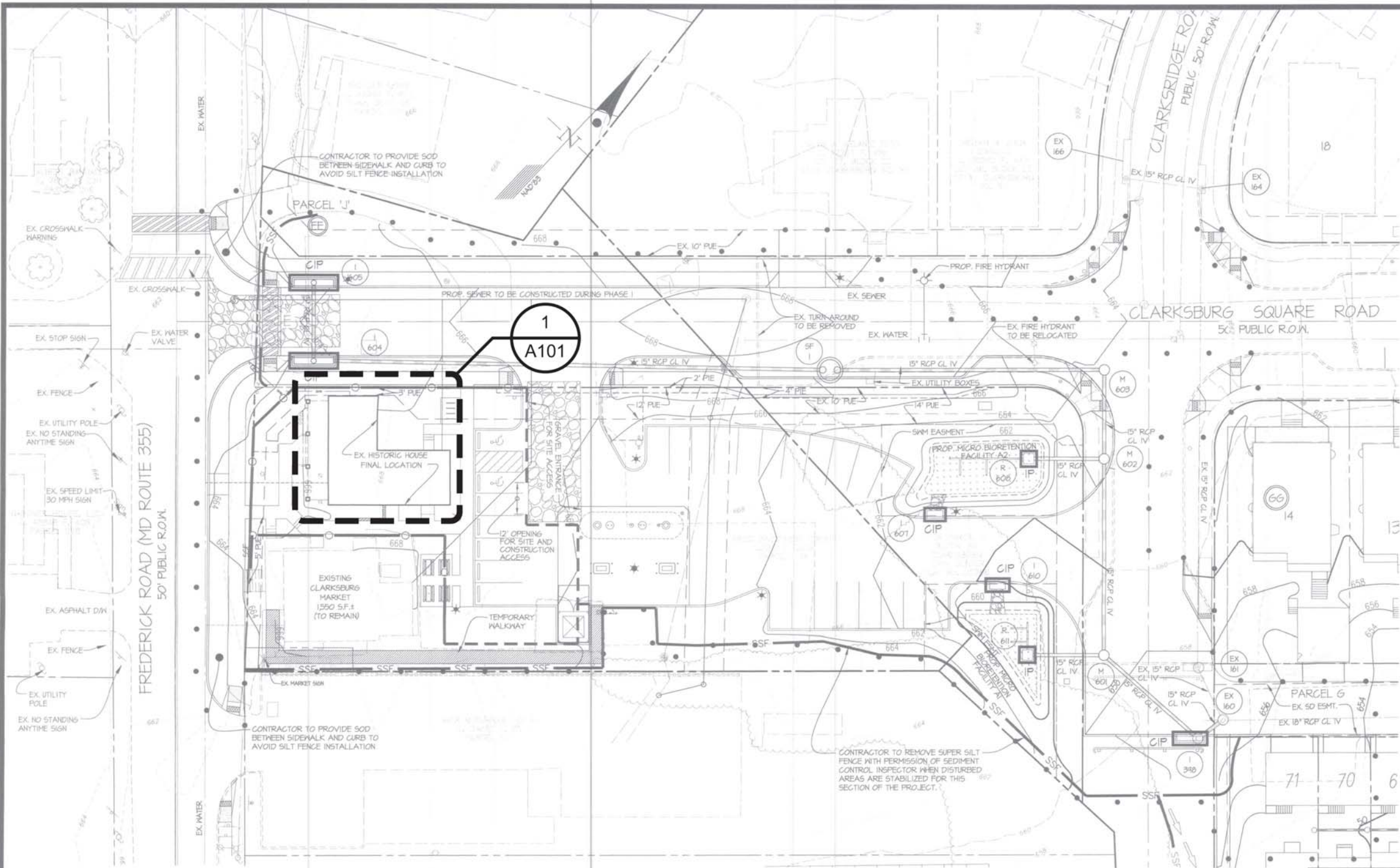
The HPC staff has reviewed and stamped the attached construction drawings.

THE BUILDING PERMIT FOR THIS PROJECT SHALL BE ISSUED CONDITIONAL UPON ADHERENCE TO THE ABOVE APPROVED HAWP CONDITIONS AND MAY REQUIRE APPROVAL BY DPS OR ANOTHER LOCAL OFFICE BEFORE WORK CAN BEGIN.

Applicant: Aries Investment Group (Ward Bucher, Architect)
Address: 23335 Frederick Road, Clarksburg

This HAWP approval is subject to the general condition that the applicant will obtain all other applicable Montgomery County or local government agency permits. After the issuance of these permits, the applicant must contact this Historic Preservation Office if any changes to the approved plan are made. Once work is complete the applicant will contact Michael Kyne at 301.563.3403 or michael.kyne@montgomeryplanning.org to schedule a follow-up site visit.

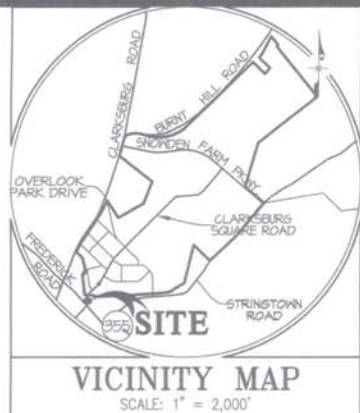




48 Hours
Before You Dig
Call
"MISS UTILITY"
Service Protection Center

MEMBER
ONE CALL SYSTEMS INTERNATIONAL

CALL TOLL FREE
1-800-257-7777

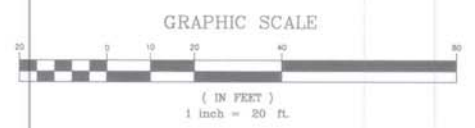


LEGEND

	EXISTING TREE LINE
	PROPOSED TREE LINE
	FLOODPLAIN
	EXISTING CONTOURS
	PROPOSED CONTOURS
	EXISTING CURB
	EXISTING EDGE OF PAVING
	PROPOSED CURB
	EXISTING WATER
	EXISTING SEWER
	PROPOSED WATER
	PROPOSED SEWER
	PROPOSED STORM DRAIN
	LIMIT OF DISTURBANCE
	EXISTING STREAM
	EXISTING BUILDING
	PROPOSED BUILDING
	PROPOSED SUPER SILT FENCE
	PROPOSED INLET PROTECTION
	PROPOSED STABILIZED CONSTRUCTION ENTRANCE
	PROPOSED JERSEY WALL BARRIERS
	PROPOSED CHAIN LINK CONSTRUCTION FENCE

INLET PROTECTION NOTE:
INLET PROTECTION AT STRUCTURES 1-398, 1-604, 1-605, 1-607, R-608, 1-610 AND R-611 MAY BE REMOVED (WITH PERMISSION OF THE SEDIMENT CONTROL INSPECTOR) ONCE THESE AREAS HAVE BASE PAVEMENT INSTALLED AND STABILIZATION IS ACHIEVED IN LANDSCAPED AREAS IMMEDIATELY ADJACENT TO THESE STRUCTURES.

REVIEWED
By Michael Kyne at 12:15 pm, Apr 02, 2020



APPROVED
Montgomery County
Historic Preservation Commission

Sandra L. Heiler

MONTGOMERY COUNTY DEPARTMENT OF PERMITTING SERVICES APPROVED FOR:		NOTE: MCDPS APPROVAL DOES NOT NEGATE THE NEED OF A MCDPS ACCESS PERMIT.
Stormwater Management: ONSITE	Sediment Control Technical Requirements: <i>Thomas Wadon 3/22/16</i>	Administrative Requirements: <i>Thomas Wadon 3/22/16</i>
<i>Thomas Wadon 3/22/16</i>	Reviewed Date	Reviewed Date
<i>Thomas Wadon 3/22/16</i>	Approved Date	Approved Date
258336 SM FILE #		281463 SEDIMENT CONTROL PERMIT NO. <i>TEW Howe 11/6/17</i>

DPS approval of a sediment control or stormwater management plan is for demonstrated compliance with minimum environmental runoff treatment standards and does not create or imply any right to divert or concentrate runoff onto any adjacent property without that property owner's permission. It does not relieve the design engineer or other responsible person of professional liability or ethical responsibility for the adequacy of the drainage design as it affects uphill or downhill properties.

GLW GUTSCHICK LITTLE & WEBER, P.A.
CIVIL ENGINEERS, LAND SURVEYORS, LAND PLANNERS, LANDSCAPE ARCHITECTS
3909 NATIONAL DRIVE - SUITE 250 - BURTOWNSVILLE OFFICE PARK
BURTOWNSVILLE, MARYLAND 20866
TEL: 301-421-4024 BAL: 410-880-1820 DC/VA: 301-989-2524 FAX: 301-421-4188

PROFESSIONAL CERTIFICATION
I HEREBY CERTIFY THAT THESE PLANS WERE PREPARED OR APPROVED BY ME, AND THAT I AM A DULY LICENSED PROFESSIONAL ENGINEER UNDER THE LAWS OF THE STATE OF MARYLAND. LICENSE NO. 28164 EXPIRATION DATE: JANUARY 20, 2018

Thomas Wadon
3/22/16

PREPARED FOR:
THIRD TRY, L.C.
c/o ELM STREET DEVELOPMENT
1355 BEVERLY ROAD, SUITE 240
MCLEAN, VIRGINIA 22101
ATTN: KATHRYN L. KUBIT
TEL: 703-734-9730

SCALE: 1" = 20'
ZONING: C-1, R-200 RMX-2
DATE: DEC., 2015
TAX MAP - GRID: EW - 42

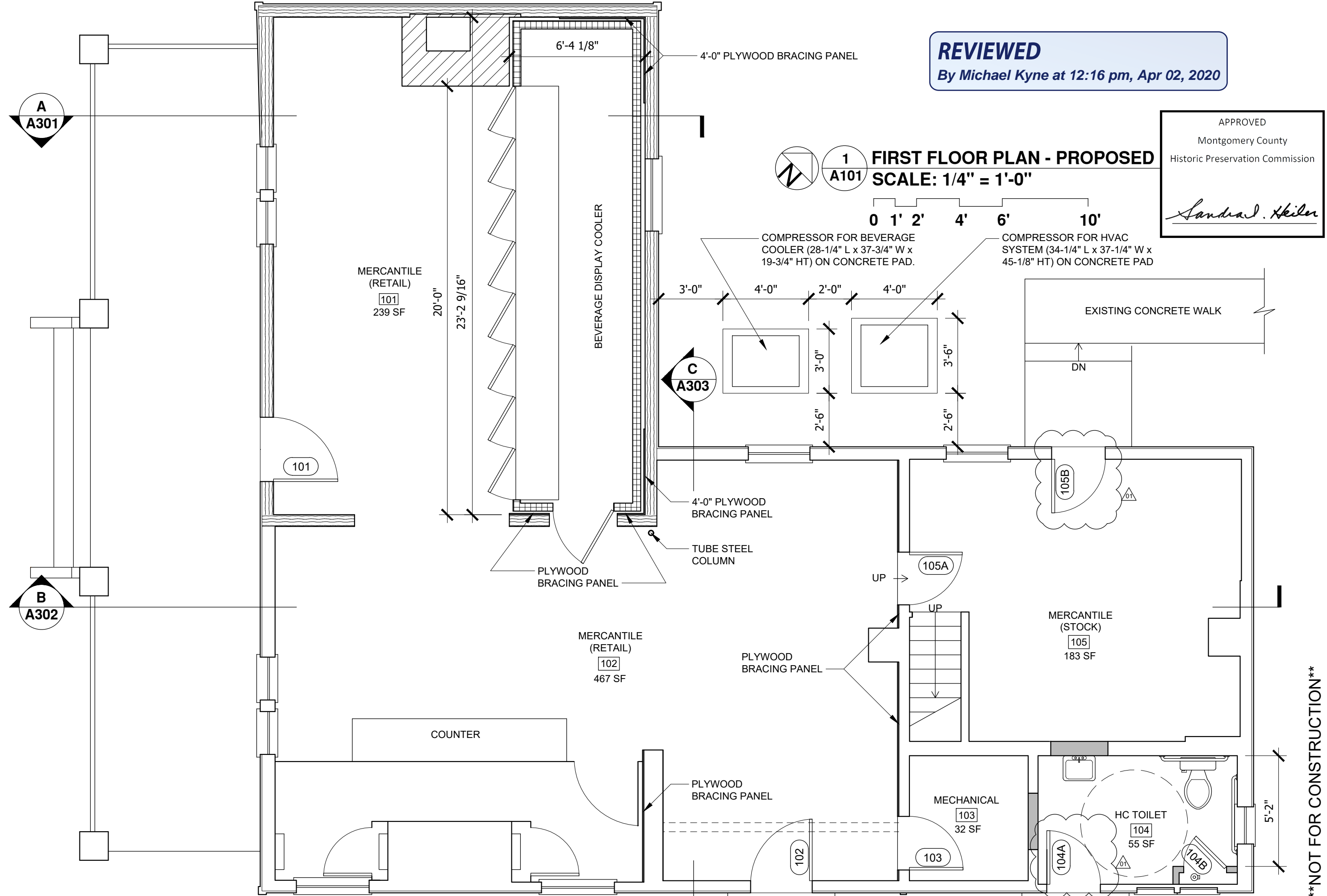
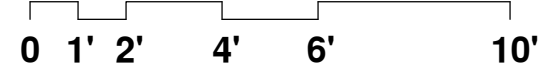
SEDIMENT AND EROSION CONTROL PLAN - PHASE 2
CLARKSBURG TOWN CENTER
CLARKSBURG SQUARE ROAD EXTENSION
STA. 0+00 TO STA. 3+75.26

G. L. W. FILE NO. 13042
SC/SIM SHEET 4 OF 14
CLARKSBURG ELECTION DISTRICT No. 02 MONTGOMERY COUNTY, MARYLAND

REVIEWED
By Michael Kyne at 12:16 pm, Apr 02, 2020

APPROVED
Montgomery County
Historic Preservation Commission
Sandra L. Heiler

1 FIRST FLOOR PLAN - PROPOSED
SCALE: 1/4" = 1'-0"



****NOT FOR CONSTRUCTION****

**CLARKSBURG
BEER & WINE
STORE**

23335 FREDERICK RD
CLARKSBURG, MD
20871

OWNER
ARIES INVESTMENT
GROUP
(CLARKSBURG) LLC
3841 SUGARLOAF PARKWAY
FREDERICK, MD 21704

DESIGN TEAM

ARCHITECT
ENCORE
SUSTAINABLE
DESIGN, LLC
31 LIGHT ST.
SUITE 500
BALTIMORE, MD 21202

STRUCTURAL ENGINEER
LINTON
ENGINEERING, LLC
46090 LAKE CENTER PLAZA
SUITE 309
POTOMAC FALLS, VA 20165

MEP ENGINEER
BERA ENGINEERS
13759 TRAVILAH RD.
ROCKVILLE, MD 20850

DRAWING ISSUE DATES

02.28.20	HAWP
03.17.20	HAWP REVISION 1

SCHEMATIC DESIGN



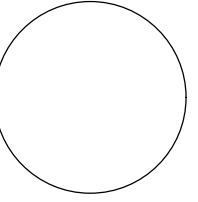
REVIEWED
By Michael Kyne at 12:16 pm, Apr 02, 2020

APPROVED
Montgomery County
Historic Preservation Commission
Sandra L. Heiler

1 WEST ELEVATION - PROPOSED
A201 SCALE: 1/4" = 1'-0"
0 1' 2' 4' 6' 10'

- GENERAL NOTES:
1. REPAIR DAMAGED WOOD WINDOW SASHES. REPLACE BROKEN OR MISSING GLAZING.
 2. REMOVE ALL SURFACE MOUNTED ELECTRICAL CONDUIT NOT IN USE.
 3. REPOINT ALL CHIMNEYS. PROVIDE METAL CAPS.
 4. REMOVE AND REPLACE ASPHALT ROOF SHINGLES. EXISTING SHINGLES ON FRONT PORCH ROOF TO REMAIN.
 5. REMOVE LEAD PAINT FROM EXTERIOR. REPAINT.

****NOT FOR CONSTRUCTION****



DATE: 03.17.2020
SCALE: 1/4" = 1'-0"
WEST ELEVATION
- PROPOSED
A201

DESIGN TEAM

ARCHITECT
ENCORE
SUSTAINABLE
DESIGN, LLC
31 LIGHT ST.
SUITE 500
BALTIMORE, MD 21202

STRUCTURAL ENGINEER
LINTON
ENGINEERING, LLC
46090 LAKE CENTER PLAZA
SUITE 309
POTOMAC FALLS, VA 20165

MEP ENGINEER
BERA ENGINEERS
13759 TRAVILAH RD.
ROCKVILLE, MD 20850

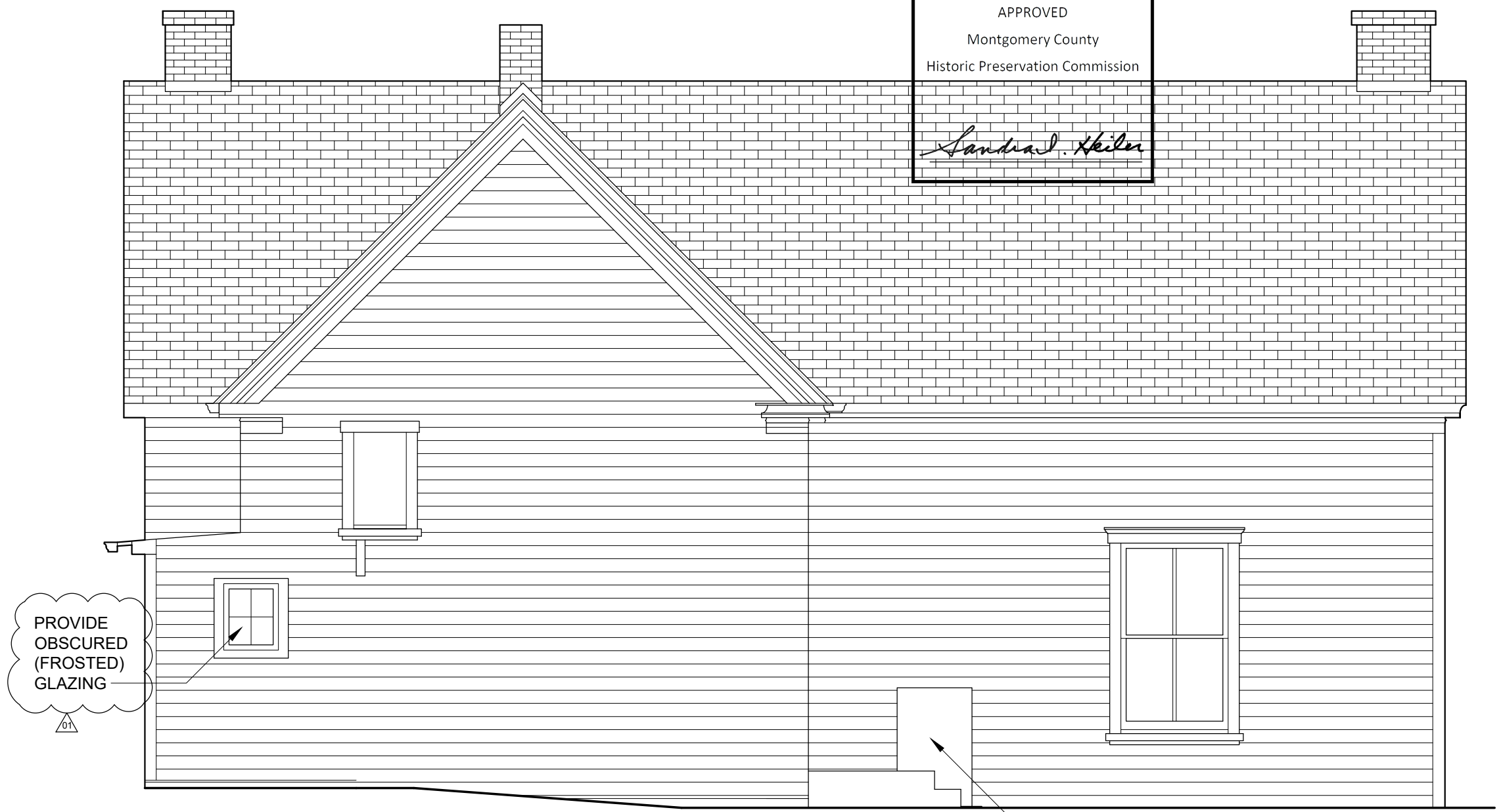
DRAWING ISSUE DATES

02.28.20	HAWP
03.17.20	HAWP REVISION 1

SCHEMATIC DESIGN

REVIEWED
By Michael Kyne at 12:16 pm, Apr 02, 2020

APPROVED
Montgomery County
Historic Preservation Commission
Sandra A. Heiler



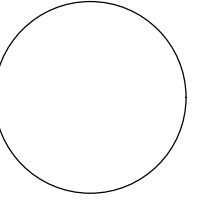
1 EAST ELEVATION - PROPOSED
A203 SCALE: 1/4" = 1'-0"

0 1' 2' 4' 6' 10'

- GENERAL NOTES:
1. REPAIR DAMAGED WOOD WINDOW SASHES. REPLACE BROKEN OR MISSING GLAZING.
 2. REMOVE ALL SURFACE MOUNTED ELECTRICAL CONDUIT NOT IN USE.
 3. REPOINT ALL CHIMNEYS. PROVIDE METAL CAPS.
 4. REMOVE AND REPLACE ASPHALT ROOF SHINGLES. EXISTING SHINGLES ON FRONT PORCH ROOF TO REMAIN.
 5. REMOVE LEAD PAINT FROM EXTERIOR. REPAINT.

COMPRESSOR FOR
HVAC SYSTEM ON
CONCRETE PAD

NOT FOR CONSTRUCTION



DATE: 03.17.2020
SCALE: 1/4" = 1'-0"
EAST ELEVATION
- PROPOSED
A203

02.28.20	HAWP
03.17.20	HAWP REVISION 1

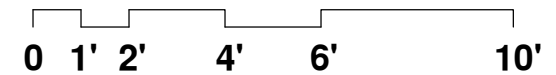
REVIEWED

By Michael Kyne at 12:16 pm, Apr 02, 2020

APPROVED
Montgomery County
Historic Preservation Commission
Sandra D. Heiler



1 NORTH ELEVATION - PROPOSED
A204 SCALE: 1/4" = 1'-0"

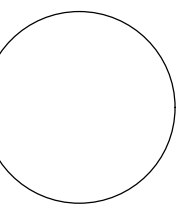


COMPRESSOR FOR
HVAC SYSTEM ON
CONCRETE PAD

COMPRESSOR FOR
BEVERAGE COOLER
ON CONCRETE PAD

- GENERAL NOTES:**
1. REPAIR DAMAGED WOOD WINDOW SASHES. REPLACE BROKEN OR MISSING GLAZING.
 2. REMOVE ALL SURFACE MOUNTED ELECTRICAL CONDUIT NOT IN USE.
 3. REPOINT ALL CHIMNEYS. PROVIDE METAL CAPS.
 4. REMOVE AND REPLACE ASPHALT ROOF SHINGLES. EXISTING SHINGLES ON FRONT PORCH ROOF TO REMAIN.
 5. REMOVE LEAD PAINT FROM EXTERIOR. REPAINT.

NOT FOR CONSTRUCTION



DATE: 03.17.2020
SCALE: 1/4" = 1'-0"
NORTH ELEVATION
- PROPOSED
A204

REVIEWED

By Michael Kyne at 12:16 pm, Apr 02, 2020

APPROVED
 Montgomery County
 Historic Preservation Commission

Sandra L. Heiler

DESIGN TEAM

ARCHITECT
 ENCORE
 SUSTAINABLE
 DESIGN, LLC
 31 LIGHT ST.
 SUITE 500
 BALTIMORE, MD 21202

STRUCTURAL ENGINEER
 LINTON
 ENGINEERING, LLC
 46090 LAKE CENTER PLAZA
 SUITE 309
 POTOMAC FALLS, VA 20165

MEP ENGINEER
 BERA ENGINEERS
 13759 TRAVILAH RD.
 ROCKVILLE, MD 20850

DRAWING ISSUE DATES

02.28.20	HAWP
03.17.20	HAWP REVISION 1

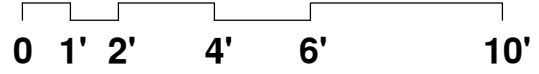
SCHEMATIC DESIGN



REPAIR DAMAGED WOOD TRIM

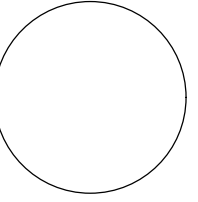
EXISTING 30" WD x 76" HT DOOR TO REMAIN

1 SOUTH ELEVATION - PROPOSED
A205 SCALE: 1/4" = 1'-0"



- GENERAL NOTES:
1. REPAIR DAMAGED WOOD WINDOW SASHES. REPLACE BROKEN OR MISSING GLAZING.
 2. REMOVE ALL SURFACE MOUNTED ELECTRICAL CONDUIT NOT IN USE.
 3. REPOINT ALL CHIMNEYS. PROVIDE METAL CAPS.
 4. REMOVE AND REPLACE ASPHALT ROOF SHINGLES. EXISTING SHINGLES ON FRONT PORCH ROOF TO REMAIN.
 5. REMOVE LEAD PAINT FROM EXTERIOR. REPAINT.

NOT FOR CONSTRUCTION



DATE: 03.17.2020
 SCALE: 1/4" = 1'-0"
 NORTH ELEVATION
 - PROPOSED
A205



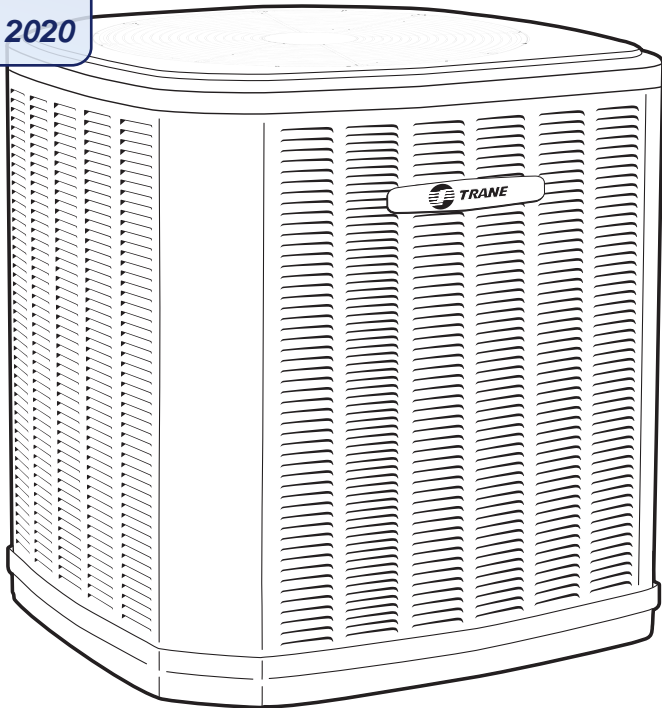
Split System Cooling Product Data

**XR16
4TTR6**

2, 3, 4 & 5 Tons

REVIEWED
By Michael Kyne at 12:16 pm, Apr 02, 2020

APPROVED
Montgomery County
Historic Preservation Commission
Sandra L. Skiler





Features and Benefits

- **CLIMATUFF™** 2-stage scroll compressor
- Efficiency up to **18.0 SEER**
- All Aluminum **SPINE FIN™** coil
- **DURATUFF™** weather proof and rust proof base
- **COMFORT "R"™** mode approved for better comfort indoors
- **QUICK-SESS™** cabinet, service access and refrigerant connections with full coil protection
- **WEATHERGUARD™** fasteners
- Glossy corrosion resistant finish tarpaulin gray cabinet with anthracite gray top
- Internal compressor high/low pressure & temperature protection
- Liquid line filter/drier
- Low sound with advanced PSC fan motor
- Service valve cover
- R-410A refrigerant
- From 70 to 100% capacity modulation
- 100% run test in the factory
- Low ambient cooling to 55° as shipped
- **Extended warranties available**

REVIEWED

By Michael Kyne at 12:16 pm, Apr 02, 2020





REVIEWED
By Michael Kyne at 12:16 pm, Apr 02, 2020

General Data

APPROVED
 Montgomery County
 Historic Preservation Commission

Product Specifications

Model No. ①	4TTR6024A1000B	4TTR6036A1000B	4TTR6048A1000A	4TTR6060A1000A
Electrical Data V/Ph/Hz ②	208/230/1/60	208/230/1/60	208/230/1/60	208/230/1/60
Min Cir Ampacity	18	24	28	41
Max Fuse Size (Amps)	20	35	45	60
Compressor	CLIMATUFF® - SCROLL	CLIMATUFF® - SCROLL	CLIMATUFF® - SCROLL	CLIMATUFF® - SCROLL
No. Compress. – No. Stages	1 -2	1-2	1-2	1-2
RL AMPS - LR AMPS	13.0 - 52	17.0 - 82	21.2 - 104	32.1 - 152.9
Outdoor Fan FL Amps	0.74	0.74	1.00	1.30
Fan HP	1/8	1/8	1/5	1/4
Fan Dia (inches)	27.6	27.6	27.6	27.6
Coil	Spine Fin™	Spine Fin™	Spine Fin™	Spine Fin™
Refrigerant R-410A	9/13-LB/OZ	9/13-LB/OZ	12/9-LB/OZ	12/9-LB/OZ
Line Size - (in.) O.D. Gas ③	5/8	3/4	7/8	1-1/8
Line Size - (in.) O.D. Liquid ③	3/8	3/8	3/8	3/8
Dimensions H x W x D (Crated)	46.4 x 35.1 x 38.7	51.0 x 35.1 x 38.7	51.0 x 35.1 x 38.7	51.0 x 35.1 x 38.7
Weight - Shipping	276	283	308	312
Weight - Net	240	245	271	275
Start Components	NO	NO	NO	NO
Sound Enclosure	NO	NO	NO	NO
Compressor Sump Heat	NO	NO	NO	NO

Optional Accessories: ④

Rubber Isolator Kit	BAYISLT101	BAYISLT101	BAYISLT101	BAYISLT101
Snow Leg - Base & Cap 4" High	BAYLEGS002	BAYLEGS002	BAYLEGS002	BAYLEGS002
Snow Leg - 4" Extension	BAYLEGS003	BAYLEGS003	BAYLEGS003	BAYLEGS003
Hard Start Kit Scroll	BAYKSKT260	BAYKSKT260	BAYKSKT263	BAYKSKT263
Crankcase Heater Kit	BAYCCHT301	BAYCCHT301	BAYCCHT301	BAYCCHT301
Extreme Condition Mounting Kit	BAYECMT004	BAYECMT004	BAYECMT004	BAYECMT004
Vertical Discharge Air Kit Base 4	BAYVDTA003	BAYVDTA004	BAYVDTA004	BAYVDTA004
Auto Charge Solenoid Kit	BAYCAKT001	BAYCAKT001	BAYCAKT001	BAYCAKT001
Refrigerant Lineset ⑤	TAYREFLN9*	TAYREFLN7*	TAYREFLN3*	TAYREFLN4*

① Certified in accordance with the Air-Source Unitary Heat Pump Equipment certification program which is based on AHRI Standard 210/240.

② Calculated in accordance with N.E.C. Only use HACR circuit breakers or fuses.

③ Standard line lengths - 60'. Standard lift - 25' Suction and Liquid line.

For Greater lengths and lifts refer to refrigerant piping software Pub# 32-3312-0*. (*denotes latest revision)

④ For accessory description and usage, see page 5.

⑤ * = 15, 20, 25, 30, 40 and 50 foot lineset available.

A-weighted Sound Power Level [dB(A)]

MODEL	SOUND POWER LEVEL [dB(A)]	A-WEIGHTED FULL OCTAVE SOUND POWER LEVEL dB - [dB(A)]							
		63	125	250	500	1000	2000	4000	8000
4TTR6024A	72	43.7	52.6	54.3	62.4	60.4	57	54.1	46.6
4TTR6036A	72	38	50.4	56.8	60.4	59.8	57.2	55.2	49.2
4TTR6048A	73	44.2	50.4	58.9	63.1	63	57.4	53.6	47.4
4TTR6060A	74	42.2	53.8	57.8	66	65.7	57.7	58.4	51.7

Note: Rated in accordance with AHRI Standard 270-2008.

General Data

Accessory Description and Usage

Rubber Isolators — 5 rubber donuts to isolate condensing unit from mounting frame or pad. Use on any application where sound transmission needs to be minimized.

Extreme Conditions Mounting Kit — Bracket kits to securely mount condensing unit to a frame or pad without removing any panels. Use in areas with high winds, or on commercial rooftops, etc.

Low Ambient Cooling — For low ambient cooling below 55° see Application Guide APP-APG013-EN.

AHRI Standard Capacity Rating Conditions

AHRI STANDARD 210/240 RATING CONDITIONS —

- (A) Cooling 80°F DB, 67°F WB air entering indoor coil, 95°F DB air entering outdoor coil.
- (B) High Temperature Heating 47°F DB, 43°F WB air entering outdoor coil, 70°F DB air entering indoor coil.
- (C) Low Temperature Heating 17°F DB, 15°F WB air entering outdoor coil, 70°F DB air entering indoor coil.
- (D) Rated indoor airflow for heating is the same as for cooling.

AHRI STANDARD 270 RATING CONDITIONS — (Noise rating numbers are determined with the unit in cooling operation.) Standard Noise Rating number is at 95°F outdoor air.



REVIEWED

By Michael Kyne at 12:16 pm, Apr 02, 2020





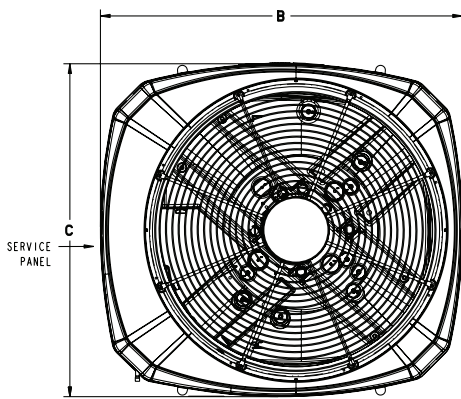
Dimensions

4TTR6 Outline Drawing

Note: All dimensions are in MM (inches).

REVIEWED

By Michael Kyne at 12:16 pm, Apr 02, 2020



TOP DISCHARGE AREA SHOULD BE UNRESTRICTED FOR AT LEAST 1524 (5 FEET) ABOVE UNIT. UNIT SHOULD BE PLACED SO ROOF RUN-OFF WATER DOES NOT POUR DIRECTLY ON UNIT, AND SHOULD BE AT LEAST 305 (12") FROM WALL AND ALL SURROUNDING SHRUBBERY ON TWO SIDES. OTHER TWO SIDES UNRESTRICTED.

ELECTRICAL AND REFRIGERANT COMPONENT CLEARANCES PER PREVAILING CODES.

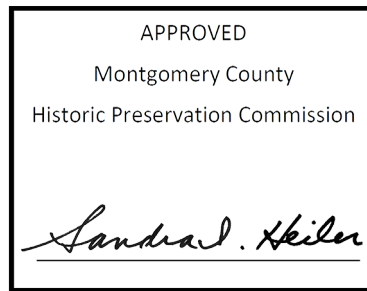
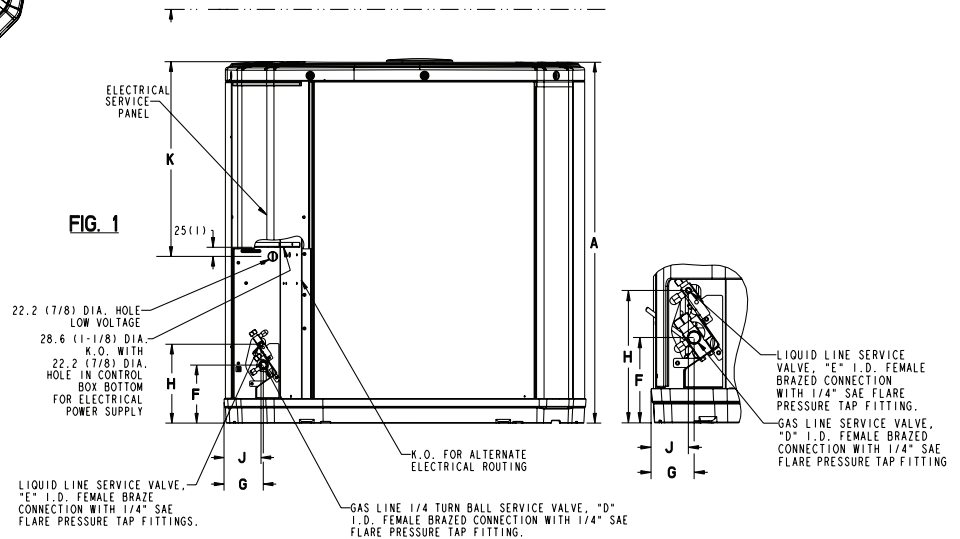


FIG. 1



MODELS	BASE	A	B	C	D	E	F	G	H	J	K
4TTR6024A	4	1045 (41 1/8)	946 (37-1/4)	870 (34-1/4)	5/8	3/8	152 (6)	98 (3-7/8)	219 (8-5/8)	86 (3-3/8)	711 (28)
4TTR6036A	4	1147 (45 1/8)	946 (37-1/4)	870 (34-1/4)	3/4	3/8	152 (6)	98 (3-7/8)	219 (8-5/8)	86 (3-3/8)	813 (32)
4TTR6048A	4	1147 (45 1/8)	946 (37-1/4)	870 (34-1/4)	7/8	3/8	152 (6)	98 (3-7/8)	219 (8-5/8)	86 (3-3/8)	813 (32)
4TTR6060A	4	1147 (45 1/8)	946 (37-1/4)	870 (34-1/4)	1-1/8	3/8	152 (6)	98 (3-7/8)	219 (8-5/8)	86 (3-3/8)	813 (32)

From Dwg. D152635



Mechanical Specifications

General

The 4TTR6 is fully charged from the factory for matched indoor section and up to 15 feet of piping. This unit is designed to operate at outdoor ambient temperatures as high as 115°F. Cooling capacities are matched with a wide selection of air handlers and furnace coils that are AHRI certified. The unit shall be certified to UL 1995. Exterior is designed for outdoor application.

Condenser Coil

The outdoor coil provides low airflow resistance and efficient heat transfer. The coil is protected on all four sides by louvered panels.

Low Ambient Cooling

As manufactured, this unit has a cooling capability to 55°F. For low ambient cooling below 55° see Application Guide.

REVIEWED

By Michael Kyne at 12:16 pm, Apr 02, 2020

Casing

Unit casing is constructed of heavy galvanized steel and painted with a weather-resistant powder paint on all louvers and panels. Corrosion and weatherproof CMBP-G30 DuraTuff™ base.

Refrigerant Controls

Refrigeration system controls include condenser fan, compressor contactor and high pressure switch. High and low pressure controls are inherent to the compressor. A factory installed liquid line drier is standard.

Compressor

The Climatuff® 2-stage compressor features internal over temperature and pressure protection and hermetic motor. Other features include: centrifugal oil pump and modular plugs for electrical connections.



Product Data for Beverage Cooler Compressor



1/2-6 HP

Air-cooled Condensing Units

Technical Guide

Models BZ | BH | BS



REVIEWED

By Michael Kyne at 12:16 pm, Apr 02, 2020

BOHN

APPROVED
Montgomery County
Historic Preservation Commission

Sandra J. Heiler

Features & Benefits

Cabinet & Construction

- Microchannel coil technology standard on most units
- Painted steel cabinets for superior strength and corrosion protection
- Heavy duty steel raised base with 1-1/2" legs
- Fan guards and wiring conduit on indoor models

Serviceability

- Suction service valves for hermetic and scroll compressors located outside the cabinet for quick installations. Semi-hermetic compressor models have a suction valve on the compressor and an access fitting on the suction line entering the cabinet.
- Receiver with fusible plug, liquid shutoff valve and charging port is standard
- Large electrical panel for ease of access
- Prefabricated wiring harnesses for tight crimp connections and consistent labeling
- Unit stays on if the hood is removed for servicing
- Sight glass is easily viewable

Quality

- All units are completely leak tested in a helium environment, bump tested and allowed to cycle off on the high and low pressure control. Each unit has a copy of the run data shipped inside the electrical panel
- Electrical circuits are completely checked for continuity
- Piping is laid out to minimize stress and vibration and is pre-bent to eliminate leaks
- Encapsulated, auto-reset, high and low pressure controls to eliminate leaks (standard on all high and medium temperature models, adjustable low pressure control standard on low temperature models)

Components

Fan

- Specifically matched with motor and coil to attain maximum air movement and cooling

Motor

- Rated for 50 and 60 cycle application
- Standard PSC or optional Variable Speed EC (VSD) motors with Orbus Controller

Compressor

- Wide variety of compressors including: hermetic, semi-hermetic and scroll. R-404A/507 available for both medium and low temperature applications (R-407A/407C available on select Scroll & Hermetic Models, and R-448A/R-449A available on select Scroll & Hermetic Models)
- Spring-mounted compressors with vibration eliminators on all 1-1/2 to 6 HP semi-hermetic compressors; 1/2 to 1 HP semi-hermetic compressors are rigid mounted and have a discharge loop
- Discharge service valves come standard on all units including hermetics



Typical Outdoor Hermetic Unit



Typical Outdoor Unit with throwaway liquid-line filter and sight glass



Typical Outdoor Hermetic Unit with liquid filter drier and sight glass

REVIEWED

By Michael Kyne at 12:16 pm, Apr 02, 2020

APPROVED

Montgomery County

Historic Preservation Commission

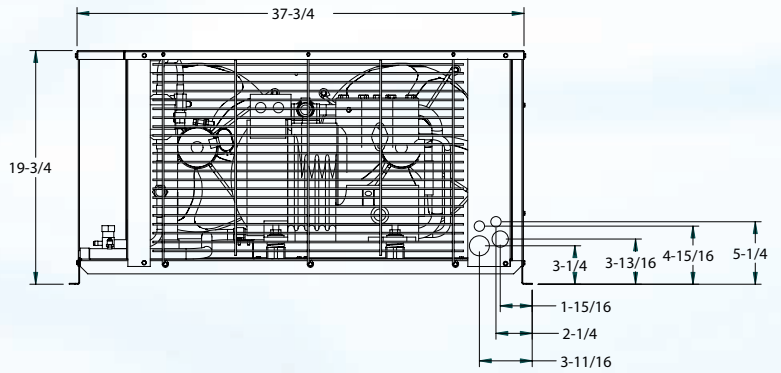
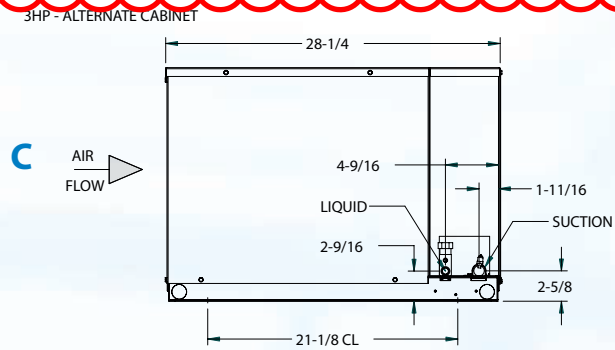
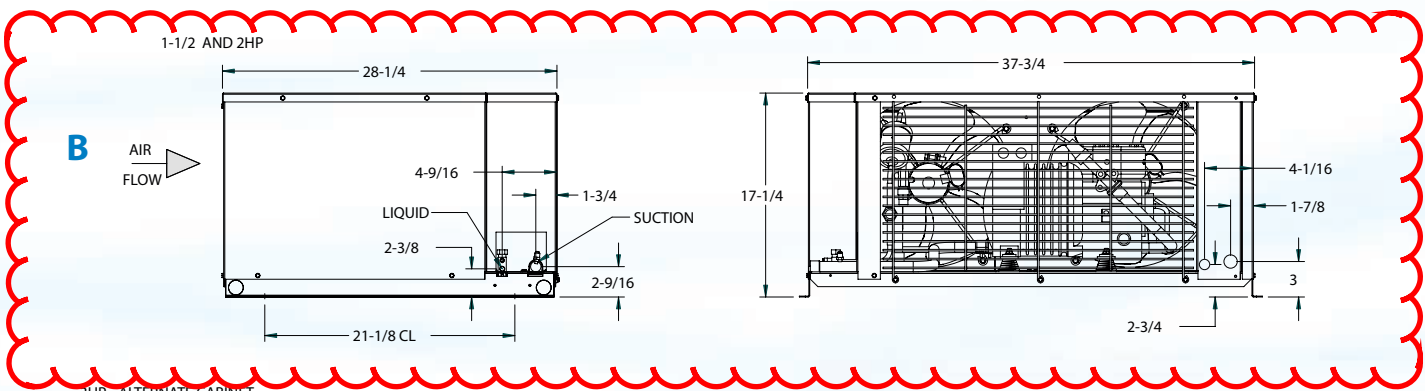
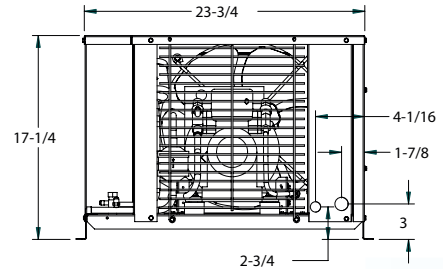
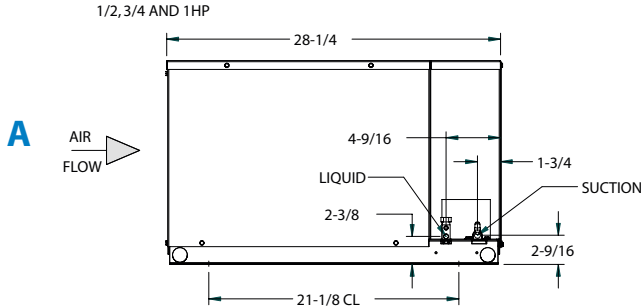
Sandra L. Heiler

Dimensional Drawings

OUTDOOR

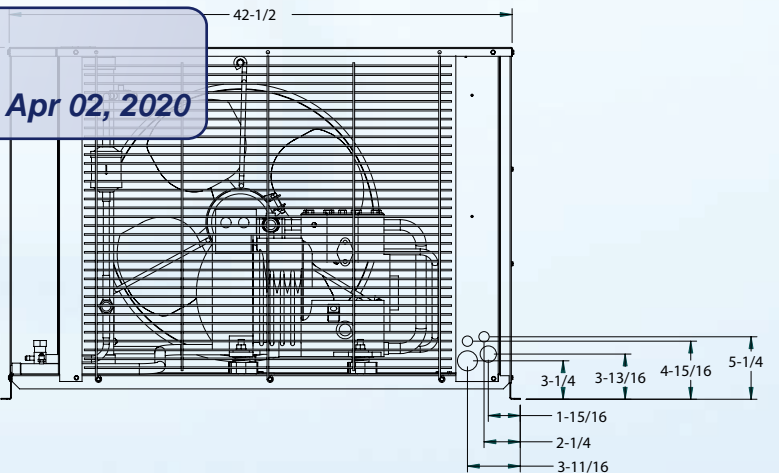
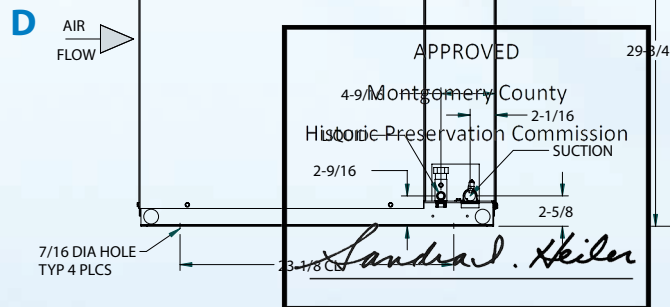
LEFT VIEW

FRONT VIEW



3, 4, 5 AND 6HP

REVIEWED
By Michael Kyne at 12:16 pm, Apr 02, 2020

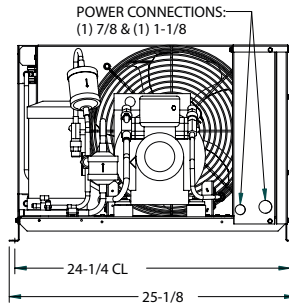


REVIEWED

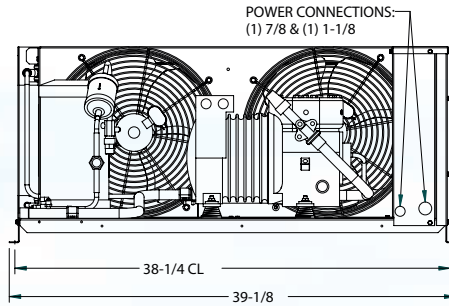
By Michael Kyne at 12:16 pm, Apr 02, 2020

FRONT VIEW

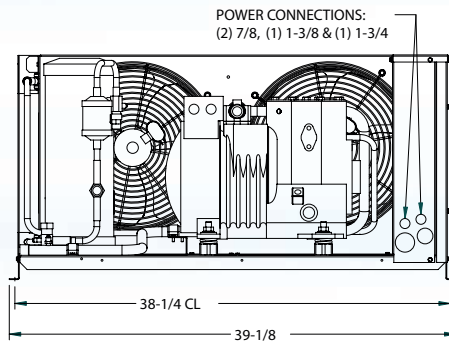
APPROVED
Montgomery County
Historic Preservation Commission
Sandra L. Heiler



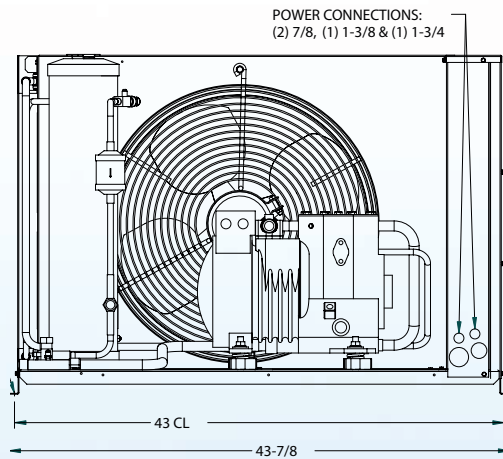
B



C



D





Quality You Can Trust...From North America's Largest Roofing Manufacturer!™

ROYAL SOVEREIGN®

THREE-TAB SHINGLES

Beauty And Performance Meet Affordability

gaf.com



Color Shown:
Golden Cedar

REVIEWED
By Michael Kyne at 12:16 pm, Apr 02, 2020

APPROVED
Montgomery County
Historic Preservation Commission
Sandra L. Heiler



ROYAL SOVEREIGN™
THREE-TAB SHINGLES

Choosing The Best-Looking Strip Shingle For Your Home

REVIEWED

By Michael Kyne at 12:16 pm, Apr 02, 2020

Some people think all 3-tab shingles look pretty much alike. Not so! At GAF, we've gone to great pains to make Royal Sovereign® Shingles the most beautiful strip shingles you can install.

Royal Sovereign® Shingles are made with an advanced color sequencing technology, creating a rich and vivid look.

Historic Preservation Commission

Sandra L. Heiler

Benefits

- **Trusted For Over 50 Years...** Royal Sovereign® Shingles have been the go-to fiberglass 3-tab shingles for U.S. contractors and builders for over a half-century!
- **Quality Product...** Over 10 billion Royal Sovereign® Shingles have been installed in North America — enough to circle the Earth more than 200 times if they were laid end to end!
- **Advanced Protection® Shingle Technology...** Reduces the use of precious natural resources while providing excellent protection for your home.
- **StainGuard® Algae Protection...** Helps ensure the beauty of your roof against unsightly blue-green algae.^{1,3}
- **Looks Great...** Color Lock™ Ceramic Firing (granules) helps maintain the true shingle color.
- **Stays In Place...** Passes the industry's two toughest wind tests: ASTM's 110 mph and 150 mph wind tests^{2,3} (under controlled laboratory conditions).
- **Excellent Performance...** Micro Weave™ Core offers a strong foundation that helps resist cracking and splitting.



- **Highest Roofing Fire Rating...** UL Class A, Listed to ANSI/UL 790.
- **Great For Resale...** The beauty of a new roof may increase your home's resale value.
- **Peace Of Mind...** 25-year ltd. transferable warranty with Smart Choice® Protection (non-prorated material and installation labor coverage) for the first five years.³

¹ StainGuard® algae protection and 10-year limited warranty against blue-green algae discoloration available only on shingles sold in packages bearing the StainGuard® logo.
² Royal Sovereign® Shingles are warranted to withstand wind speeds up to 60 mph.
³ See GAF Shingle & Accessory Ltd. Warranty for complete coverage and restrictions.

Charcoal



Note: It is difficult to reproduce the color clarity and actual color blends of these products. Before selecting your color, please ask to see several full-size shingles.



ROYAL SOVEREIGN

THREE-TAB SHINGLES

SHINGLE & ACCESSORY LTD. WARRANTY
25 Years
LTD. WARRANTY TERM

REVIEWED

By Michael Kyne at 12:16 pm, Apr 02, 2020



APPROVED
Montgomery County
Historic Preservation Commission
Sandra Heiler

Color Availability

Most Popular Colors:

	1	2	3	4	5
Autumn Brown	●		●	●	●
Charcoal	●	●	●	●	●
Golden Cedar	●		●	●	●
Silver Lining			●		●
Weathered Gray	●		●	●	●
White*		●	●		●

Regional Colors:

Ash Brown	●				
Cypress Tan					●
Nickel Gray			●		
Russet Red					●
Sandrift					●
Slate	●		●	●	
Summer Sage		●			

Most Popular Colors



Regional Colors



Specifications

- 3-Tab Fiberglass Asphalt Construction
- 25-Year Ltd. Transferable Warranty¹
- 60 mph Ltd. Wind Warranty¹
- UL Listed to ANSI/UL 790 Class A
- StainGuard[®] Algae Protection²
- ASTM D7158 Class H
- ASTM D3018 Type 1
- ASTM D3161 Type 1, Class F
- ASTM D3462³
- Miami-Dade County Product Control Approved

- State of Florida Approved
- Texas Department Of Insurance Listed
- ICC Approved
- Classified in accordance with ICC-ES AC438
- Approx. 79 Pieces/Square (English)
- Approx. 316 Nails/Square (English)
- 5" Exposure (English)
- Approx. 64 Pieces/Square⁴ (Metric)
- Approx. 256 Nails/Square⁴ (Metric)
- 5 5/8" Exposure⁴ (Metric)
- Approx. 3 Bundles/Square

WHITE ONLY

- ENERGY STAR[®] Certified (U.S. Only)
- Can Be Used to Comply with Title 24 Cool Roof Requirements
- Rated by the Cool Roof Rating Council
- Meets the Cool Roof Requirements of the Los Angeles Green Building Code
- Solar Reflectance = .027
- Thermal Emittance = .091
- Solar Reflectance Index = 28

¹ See GAF Shingle & Accessory Ltd. Warranty for complete coverage and restrictions.

² StainGuard[®] algae protection and 10-year limited warranty against blue-green algae discoloration available only on shingles sold in packages bearing the StainGuard[®] logo. See GAF Shingle and Accessory Ltd. Warranty for complete coverage and restrictions.

³ Periodically tested by independent and internal labs to ensure compliance with ASTM D3462 at time of manufacture.

⁴ Applies to Fontana plant only.



*ENERGY STAR[®] certified (U.S. only). When installed properly, this product will help reduce energy costs. Actual savings will vary based on geographic location and individual building characteristics. For more information, contact GAF Technical Services at 1-800-ROOF-411, visit gaf.com, or call 1-888-STAR-YES.

Note: It is difficult to reproduce the color clarity and actual color blends of these products. Before selecting your color, please ask to see several full-size shingles.



Royal Sovereign[®] Shingles have earned the prestigious Good Housekeeping Seal (applicable in U.S. only).



Photo 01

Front Facade (West Elevation) View from across Frederick Road at 23330 Frederick Road
Photo by Ward Bucher | March 01, 2020



REVIEWED

By Michael Kyne at 12:16 pm, Apr 02, 2020

APPROVED
Montgomery County
Historic Preservation Commission

Sandra J. Heiler

Photo 02

Side Facade (North Elevation)
Photo by Ward Bucher | March 01, 2020



Photo 03
Rear Facade (East Elevation)
Photo by Ward Bucher | March 01, 2020



REVIEWED
By Michael Kyne at 12:16 pm, Apr 02, 2020

APPROVED
Montgomery County
Historic Preservation Commission
Sandra L. Heiler

Photo 04
Side Facade (South Elevation)
Photo by Ward Bucher | March 01, 2020



Photo 05
View from public right of way at intersection of Frederick Road and
Clarksburg Square Road
Photo by Ward Bucher | March 01, 2020

REVIEWED

By Michael Kyne at 12:16 pm, Apr 02, 2020

APPROVED
Montgomery County
Historic Preservation Commission
Sandra Heiler



Photo 06
Side Facade. View from across Clarksburg Square Road at 23341 Frederick Road
Photo by Ward Bucher | March 01, 2020



Photo 07

View of from adjacent property at 23321 Frederick Road.
The view of the building is obstructed by 23329 Frederick Road
Photo by Ward Bucher | March 01, 2020



Photo 08

Side/Rear Facade. View from across Clarksburg Square Road at
13139 & 13137 Clarksburg Square Road
Photo by Ward Bucher | March 01, 2020



Photo 09
Rear Facade. View from across Clarksridge Road at
13130 Clarksburg Square Road
Photo by Ward Bucher | March 01, 2020

Photo 10
Not Used

REVIEWED

By Michael Kyne at 12:16 pm, Apr 02, 2020

Photo 11
Not Used

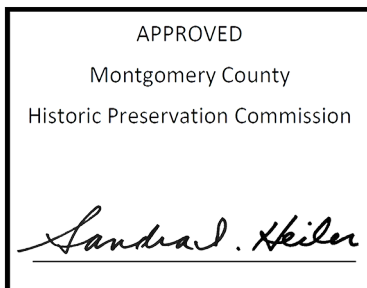




Photo 12
Close up view of existing 3-Tab shingles to be replaced like-in-kind.
Photo by Ward Bucher | March 01, 2020

REVIEWED

By Michael Kyne at 12:16 pm, Apr 02, 2020

APPROVED
Montgomery County
Historic Preservation Commission

Sandra J. Heiler