



## HISTORIC PRESERVATION COMMISSION

Marc Elrich  
*County Executive*

Robert K. Sutton  
*Chairman*

Date: July 29, 2021

### MEMORANDUM

TO: Mitra Pedoeem  
Department of Permitting Services

FROM: Dan Bruechert  
Historic Preservation Section  
Maryland-National Capital Park & Planning Commission

SUBJECT: Historic Area Work Permit #956017 - Window Replacement

---

The Montgomery County Historic Preservation Commission (HPC) has reviewed the attached application for a Historic Area Work Permit (HAWP). This application was **Approved** by hat the July 28, 2021 HPC meeting.

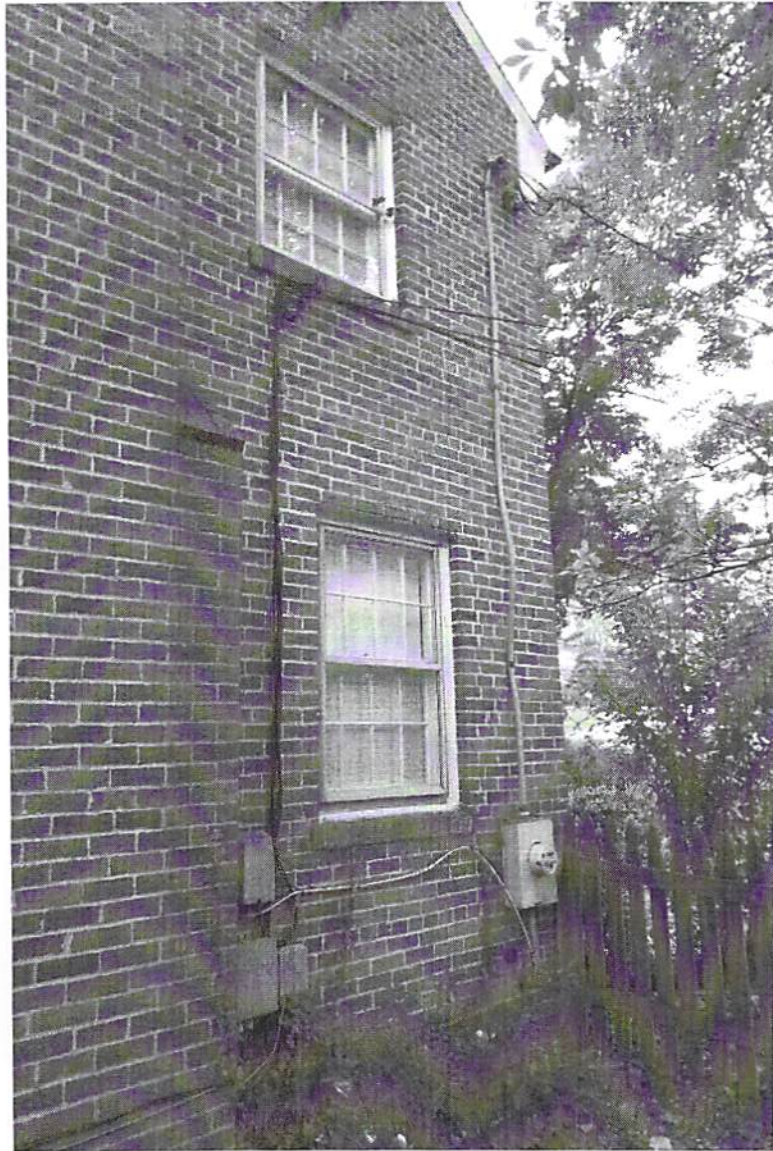
The HPC staff has reviewed and stamped the attached construction drawings.

THE BUILDING PERMIT FOR THIS PROJECT SHALL BE ISSUED CONDITIONAL UPON ADHERENCE TO THE ABOVE APPROVED HAWP CONDITIONS AND MAY REQUIRE APPROVAL BY DPS OR ANOTHER LOCAL OFFICE BEFORE WORK CAN BEGIN.

Applicant: Lauren Breitenother  
Address: 5511 Lambeth Rd., Bethesda

This HAWP approval is subject to the general condition that the applicant will obtain all other applicable Montgomery County or local government agency permits. After the issuance of these permits, the applicant must contact this Historic Preservation Office if any changes to the approved plan are made. Once work is complete the applicant will contact Dan Bruechert at 301.563.3400 or [dan.bruechert@montgomeryplanning.org](mailto:dan.bruechert@montgomeryplanning.org) to schedule a follow-up site visit.





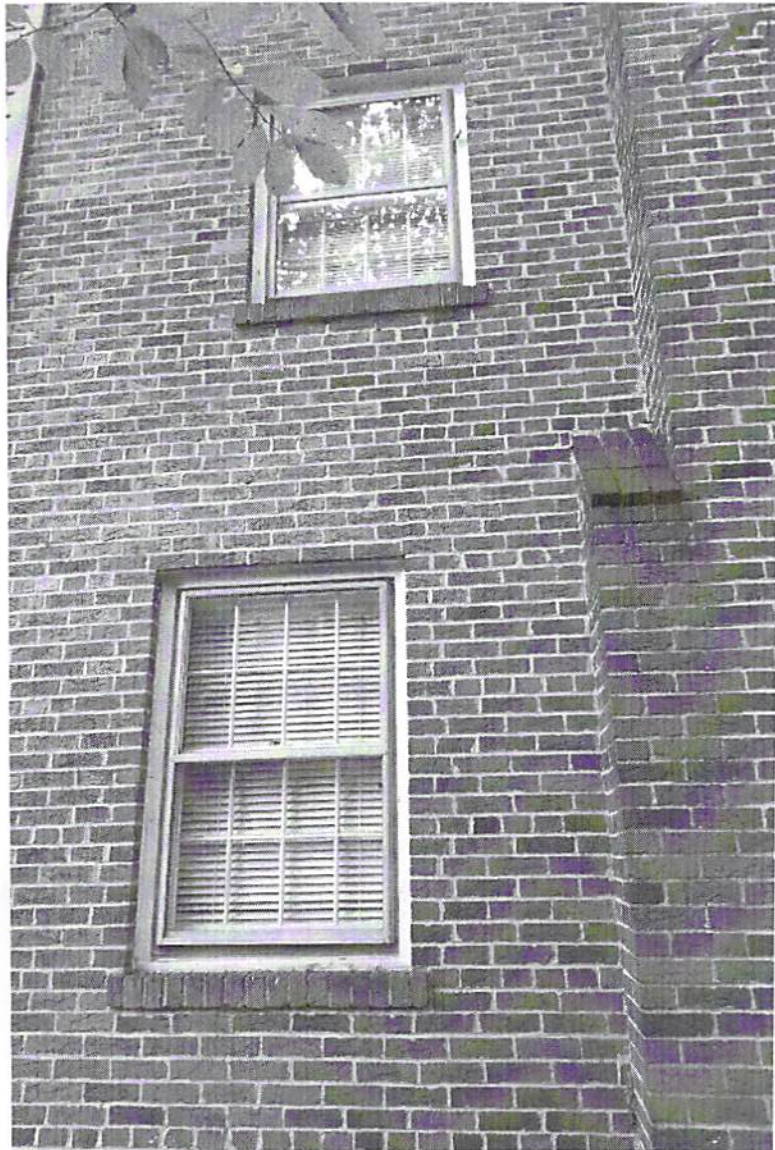
#5

#6

APPROVED  
Montgomery County  
Historic Preservation Commission

*Robert A. Potter*

**REVIEWED**  
By Dan.Bruechert at 3:40 pm, Jul 29, 2021



#1

APPROVED  
Montgomery County  
Historic Preservation Commission

*Ronald H. [Signature]*

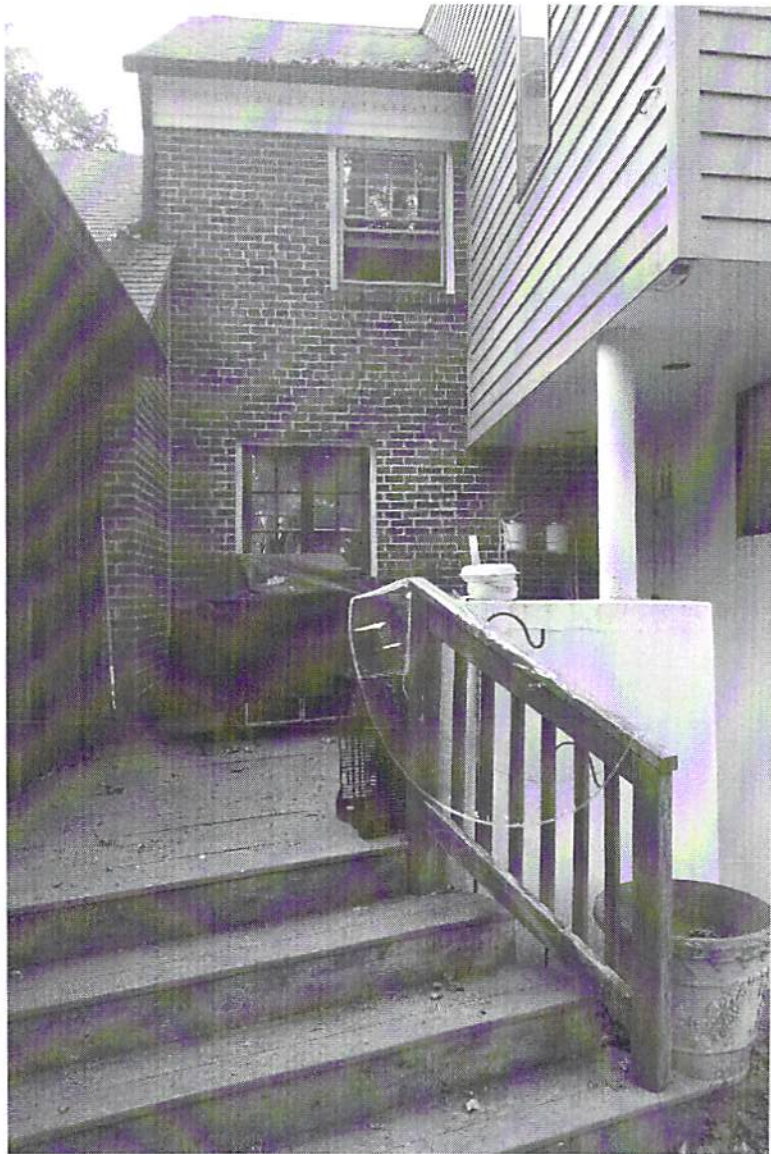
#6

**REVIEWED**  
By Dan.Bruechert at 3:40 pm, Jul 29, 2021

LEFT side



#2



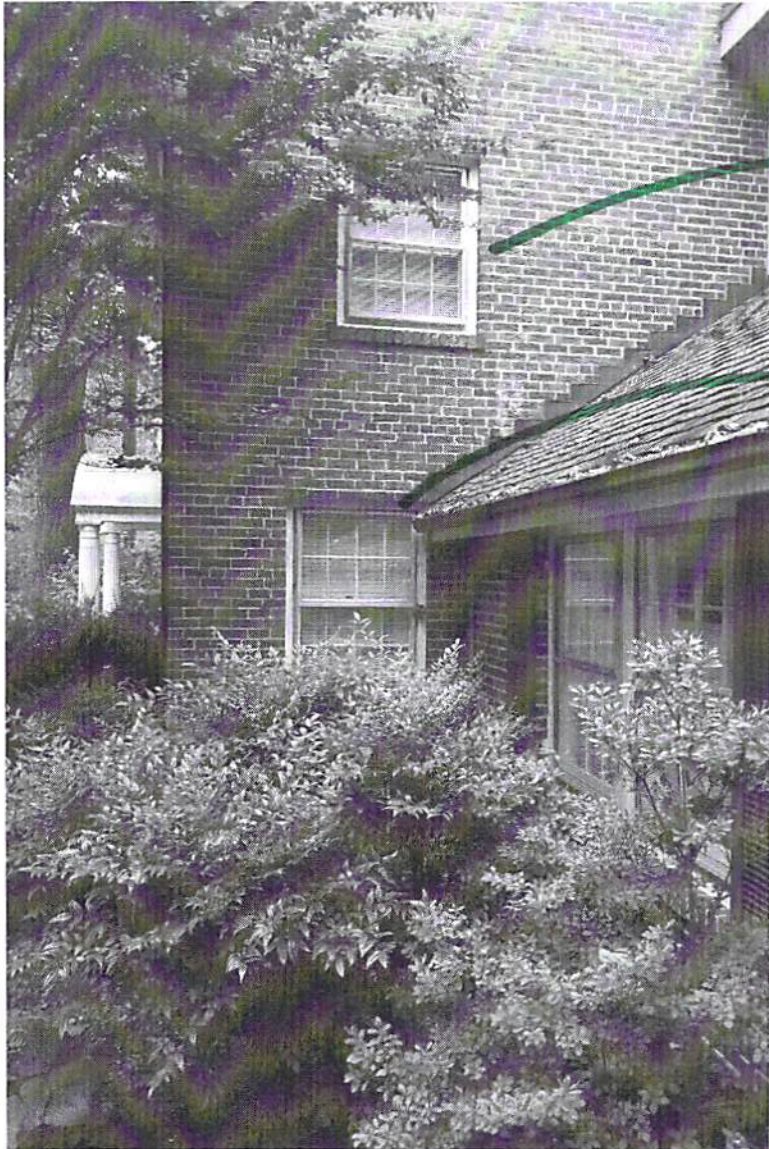
REAR

APPROVED  
Montgomery County  
Historic Preservation Commission



---

**REVIEWED**  
By Dan.Bruechert at 3:40 pm, Jul 29, 2021



H3

L18

APPROVED  
Montgomery County  
Historic Preservation Commission

*Ronald H. Potter*

**REVIEWED**

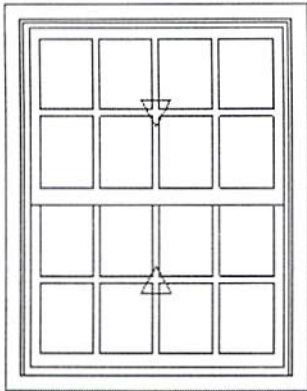
*By Dan.Bruechert at 3:40 pm, Jul 29, 2021*



## LINE ITEM QUOTES

The following is a schedule of the windows and doors for this project. For additional unit details, please see Line Item Quotes. Additional charges, tax or Terms and Conditions may apply. Detail pricing is per unit.

Line #1	Mark Unit: MASTER BATH	Net Price:		1,325.83
Qty: 1		Ext. Net Price:	USD	1,325.83



As Viewed From The Exterior

Entered As: OC  
 FS 36 3/4" X 46 5/8"  
 OC 40 1/8" X 50"  
 RO 37 3/4" X 47 1/8"  
**Egress Information**  
 Width: 33 5/8" Height: 18 13/32"  
 Net Clear Opening: 4.30 SqFt  
 Ultrex Fiberglass: AAMA 624

Stone White Exterior  
 White Interior  
 Elevate Double Hung  
 Outside of Exterior Casing 40 1/8" X 50"  
 Rough Opening 37 3/4" X 47 1/8"  
 Top Sash  
 Stone White Exterior  
 White Interior  
 IG  
 Low E2 w/Argon  
 Stainless Perimeter and Spacer Bar  
 7/8" SDL - With Spacer Bar - Stainless  
 Rectangular - Special Cut 4W2H  
 Stone White Ext - White Int  
 Bottom Sash  
 Stone White Exterior  
 White Interior  
 IG  
 Low E2 w/Argon  
 Stainless Perimeter and Spacer Bar  
 7/8" SDL - With Spacer Bar - Stainless  
 Rectangular - Special Cut 4W2H  
 Stone White Ext - White Int  
 White Weather Strip Package  
 White Sash Lock  
 Exterior Aluminum Screen  
 Stone White Surround  
 Charcoal Fiberglass Mesh  
 6 9/16" Jamb  
 Jamb Extension from 4 9/16"  
 Casing Top and Sides  
 Stone White BMC  
 With Sill Nosing  
 \*\*\*Exterior Casing Ship Loose  
 Thru Jamb Installation  
 \*\*\*Note: Divided lite cut alignment may not be accurately represented in the OMS drawing. Please consult your local representative for exact specifications.  
 \*\*\*Note: Unit Availability and Price is Subject to Change



**REVIEWED**  
 By Dan.Bruechert at 3:40 pm, Jul 29, 2021

Line #2	Mark Unit: REAR BEDROOM	Net Price:		1,325.83
Qty: 1		Ext. Net Price:	USD	1,325.83

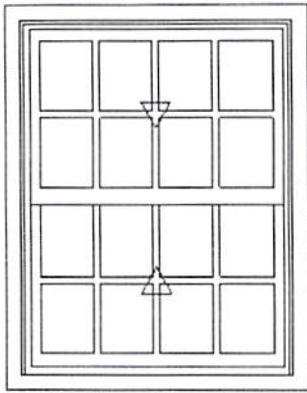


Stone White Exterior  
 White Interior  
 Elevate Double Hung  
 Outside of Exterior Casing 40 1/8" X 50"  
 Rough Opening 37 3/4" X 47 1/8"  
 Top Sash  
 Stone White Exterior  
 White Interior  
 IG  
 Low E2 w/Argon  
 Stainless Perimeter and Spacer Bar  
 7/8" SDL - With Spacer Bar - Stainless  
 Rectangular - Special Cut 4W2H

Accepted:

Processed on: 6/4/2021 9:04:05 AM

Page 4 of 12

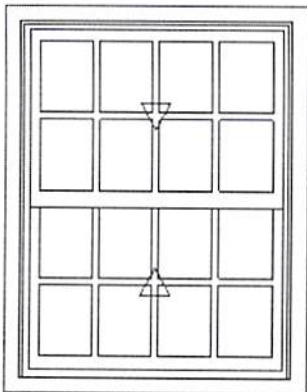


As Viewed From The Exterior

Entered As: OC  
 FS 36 3/4" X 46 5/8"  
 OC 40 1/8" X 50"  
 RO 37 3/4" X 47 1/8"  
**Egress Information**  
 Width: 33 5/8" Height: 18 13/32"  
 Net Clear Opening: 4.30 SqFt  
 Ultrex Fiberglass: AAMA 624

Stone White Ext - White Int  
 Bottom Sash  
 Stone White Exterior  
 White Interior  
 IG  
 Low E2 w/Argon  
 Stainless Perimeter and Spacer Bar  
 7/8" SDL - With Spacer Bar - Stainless  
 Rectangular - Special Cut 4W2H  
 Stone White Ext - White Int  
 White Weather Strip Package  
 White Sash Lock  
 Exterior Aluminum Screen  
 Stone White Surround  
 Charcoal Fiberglass Mesh  
 6 9/16" Jamb  
 Jamb Extension from 4 9/16" to 6 9/16"  
 Casing Top and Sides  
 Stone White BMC  
 With Sill Nosing  
 \*\*\*Exterior Casing Ship Loose  
 Thru Jamb Installation  
 \*\*\*Note: Divided lite cut alignment may not be accurately represented in the OMS drawing. Please consult your local representative for exact specifications.  
 \*\*\*Note: Unit Availability and Price is Subject to Change

Line #3	Mark Unit: FRONT RIGHT BEDROOM	Net Price:	1,325.83
Qty: 2		Ext. Net Price:	2,651.66
		USD	



As Viewed From The Exterior

Entered As: OC  
 FS 36 3/4" X 46 5/8"  
 OC 40 1/8" X 50"  
 RO 37 3/4" X 47 1/8"  
**Egress Information**  
 Width: 33 5/8" Height: 18 13/32"  
 Net Clear Opening: 4.30 SqFt  
 Ultrex Fiberglass: AAMA 624

Stone White Exterior  
 White Interior  
 Elevate Double Hung  
 Outside of Exterior Casing 40 1/8" X 50"  
 Rough Opening 37 3/4" X 47 1/8"  
 Top Sash  
 Stone White Exterior  
 White Interior  
 IG  
 Low E2 w/Argon  
 Stainless Perimeter and Spacer Bar  
 7/8" SDL - With Spacer Bar - Stainless  
 Rectangular - Special Cut 4W2H  
 Stone White Ext - White Int  
 Bottom Sash  
 Stone White Exterior  
 White Interior  
 IG  
 Low E2 w/Argon  
 Stainless Perimeter and Spacer Bar  
 7/8" SDL - With Spacer Bar - Stainless  
 Rectangular - Special Cut 4W2H  
 Stone White Ext - White Int  
 White Weather Strip Package  
 White Sash Lock  
 Exterior Aluminum Screen  
 Stone White Surround  
 Charcoal Fiberglass Mesh  
 6 9/16" Jamb  
 Jamb Extension from 4 9/16" to 6 9/16"  
 Casing Top and Sides  
 Stone White BMC  
 With Sill Nosing  
 \*\*\*Exterior Casing Ship Loose  
 Thru Jamb Installation  
 \*\*\*Note: Divided lite cut alignment may not be accurately represented in the OMS drawing. Please consult your local representative for exact specifications.

APPROVED  
 Montgomery County  
 Historic Preservation Commission



**REVIEWED**  
 By Dan.Bruechert at 3:40 pm, Jul 29, 2021

Accepted:

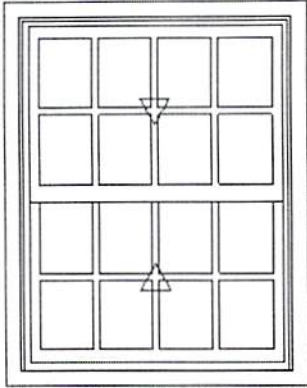
Processed on: 6/4/2021 9:04:05 AM

Page 5 of 12

\*\*\*Note: Unit Availability and Price is Subject to Change

Line #4 Qty: 1	Mark Unit: MAIN HALL	Net Price:	1,325.83
		Ext. Net Price:	USD 1,325.83

**MARVIN** 



As Viewed From The Exterior

Entered As: OC  
 FS 36 3/4" X 46 5/8"  
 OC 40 1/8" X 50"  
 RO 37 3/4" X 47 1/8"  
**Egress Information**  
 Width: 33 5/8" Height: 18 13/32"  
 Net Clear Opening: 4.30 SqFt  
 Ultrex Fiberglass: AAMA 624

Stone White Exterior  
 White Interior  
 Elevate Double Hung  
 Outside of Exterior Casing 40 1/8" X 50"  
 Rough Opening 37 3/4" X 47 1/8"  
 Top Sash  
 Stone White Exterior  
 White Interior  
 IG  
 Low E2 w/Argon  
 Stainless Perimeter and Spacer Bar  
 7/8" SDL - With Spacer Bar - Stainless  
 Rectangular - Special Cut 4W2H  
 Stone White Ext - White Int  
 Bottom Sash  
 Stone White Exterior  
 White Interior  
 IG  
 Low E2 w/Argon  
 Stainless Perimeter and Spacer Bar  
 7/8" SDL - With Spacer Bar - Stainless  
 Rectangular - Special Cut 4W2H  
 Stone White Ext - White Int  
 White Weather Strip Package  
 White Sash Lock  
 Exterior Aluminum Screen  
 Stone White Surround  
 Charcoal Fiberglass Mesh  
 6 9/16" Jamb  
 Jamb Extension from 4 9/16" to 6 9/16"  
 Casing Top and Sides  
 Stone White BMC  
 With Sill Nosing  
 \*\*\*Exterior Casing Ship Loose  
 Thru Jamb Installation  
 \*\*\*Note: Divided lite cut alignment may not be accurately represented in the  
 OMS drawing. Please consult your local representative for exact specifications.  
 \*\*\*Note: Unit Availability and Price is Subject to Change



**REVIEWED**  
 By Dan.Bruechert at 3:40 pm, Jul 29, 2021

Line #5 Qty: 2	Mark Unit: FRONT LEFT BEDROOM	Net Price:	1,325.83
		Ext. Net Price:	USD 2,651.66

**MARVIN** 

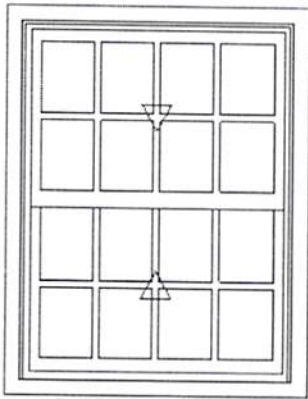
Stone White Exterior  
 White Interior  
 Elevate Double Hung  
 Outside of Exterior Casing 40 1/8" X 50"  
 Rough Opening 37 3/4" X 47 1/8"  
 Top Sash  
 Stone White Exterior  
 White Interior  
 IG  
 Low E2 w/Argon  
 Stainless Perimeter and Spacer Bar  
 7/8" SDL - With Spacer Bar - Stainless  
 Rectangular - Special Cut 4W2H  
 Stone White Ext - White Int  
 Bottom Sash  
 Stone White Exterior  
 White Interior  
 IG

Accepted:

Processed on: 6/4/2021 9:04:05 AM

Page 6 of 12





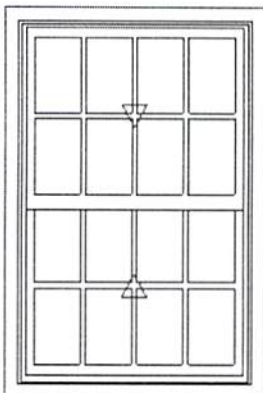
As Viewed From The Exterior

Entered As: OC  
 FS 36 3/4" X 46 5/8"  
 OC 40 1/8" X 50"  
 RO 37 3/4" X 47 1/8"

**Egress Information**  
 Width: 33 5/8" Height: 18 13/32"  
 Net Clear Opening: 4.30 SqFt  
 Ultrex Fiberglass: AAMA 624

- Low E2 w/Argon
- Stainless Perimeter and Spacer Bar
- 7/8" SDL - With Spacer Bar - Stainless
- Rectangular - Special Cut 4W2H
- Stone White Ext - White Int
- White Weather Strip Package
- White Sash Lock
- Exterior Aluminum Screen
- Stone White Surround
- Charcoal Fiberglass Mesh
- 6 9/16" Jamb
- Jamb Extension from 4 9/16" to 6 9/16"
- Casing Top and Sides
- Stone White BMC
- With Sill Nosing
- \*\*\*Exterior Casing Ship Loose
- Thru Jamb Installation
- \*\*\*Note: Divided lite cut alignment may not be accurately represented in the OMS drawing. Please consult your local representative for exact specifications.
- \*\*\*Note: Unit Availability and Price is Subject to Change

Line #6	Mark Unit: LIVING ROOM LEFT SIDE	Net Price:	1,387.11
Qty: 2		Ext. Net Price:	2,774.22
		USD	



As Viewed From The Exterior

Entered As: OC  
 FS 36 3/4" X 54 7/8"  
 OC 40 1/8" X 58 1/4"  
 RO 37 3/4" X 55 3/8"

**Egress Information**  
 Width: 33 5/8" Height: 22 17/32"  
 Net Clear Opening: 5.26 SqFt  
 Ultrex Fiberglass: AAMA 624

- Stone White Exterior
- White Interior
- Elevate Double Hung
- Outside of Exterior Casing 40 1/8" X 58 1/4"
- Rough Opening 37 3/4" X 55 3/8"
- Top Sash
- Stone White Exterior
- White Interior
- IG
- Low E2 w/Argon
- Stainless Perimeter and Spacer Bar
- 7/8" SDL - With Spacer Bar - Stainless
- Rectangular - Special Cut 4W2H
- Stone White Ext - White Int
- Bottom Sash
- Stone White Exterior
- White Interior
- IG
- Low E2 w/Argon
- Stainless Perimeter and Spacer Bar
- 7/8" SDL - With Spacer Bar - Stainless
- Rectangular - Special Cut 4W2H
- Stone White Ext - White Int
- White Weather Strip Package
- White Sash Lock
- Exterior Aluminum Screen
- Stone White Surround
- Charcoal Fiberglass Mesh
- 6 9/16" Jamb
- Jamb Extension from 4 9/16" to 6 9/16"
- Casing Top and Sides
- Stone White BMC
- With Sill Nosing
- \*\*\*Exterior Casing Ship Loose
- Thru Jamb Installation
- \*\*\*Note: Divided lite cut alignment may not be accurately represented in the OMS drawing. Please consult your local representative for exact specifications.

APPROVED  
 Montgomery County  
 Historic Preservation Commission



**REVIEWED**  
 By Dan.Bruechert at 3:40 pm, Jul 29, 2021

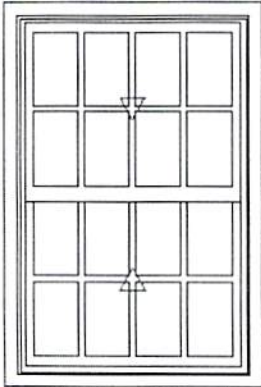
Accepted:

Processed on: 6/4/2021 9:04:05 AM

Page 7 of 12

\*\*\*Note: Unit Availability and Price is Subject to Change

Line #7 Qty: 2	Mark Unit: FRONT FAMILY ROOM	Net Price:	1,387.11
		Ext. Net Price:	USD 2,774.22



As Viewed From The Exterior

Entered As: OC  
 FS 36 5/8" X 54 7/8"  
 OC 40" X 58 1/4"  
 RO 37 5/8" X 55 3/8"

Egress Information  
 Width: 33 1/2" Height: 22 17/32"  
 Net Clear Opening: 5.24 SqFt  
 Ultrrex Fiberglass: AAMA 624

Stone White Exterior  
 White Interior  
 Elevate Double Hung  
 Outside of Exterior Casing 40" X 58 1/4"  
 Rough Opening 37 5/8" X 55 3/8"  
 Top Sash  
 Stone White Exterior  
 White Interior  
 IG  
 Low E2 w/Argon  
 Stainless Perimeter and Spacer Bar  
 7/8" SDL - With Spacer Bar - Stainless  
 Rectangular - Special Cut 4W2H  
 Stone White Ext - White Int  
 Bottom Sash  
 Stone White Exterior  
 White Interior  
 IG  
 Low E2 w/Argon  
 Stainless Perimeter and Spacer Bar  
 7/8" SDL - With Spacer Bar - Stainless  
 Rectangular - Special Cut 4W2H  
 Stone White Ext - White Int  
 White Weather Strip Package  
 White Sash Lock  
 Exterior Aluminum Screen  
 Stone White Surround  
 Charcoal Fiberglass Mesh  
 6 9/16" Jamb  
 Jamb Extension from 4 9/16" to 6 9/16"  
 Casing Top and Sides  
 Stone White BMC  
 With Sill Nosing  
 \*\*\*Exterior Casing Ship Loose  
 Thru Jamb Installation  
 \*\*\*Note: Divided lite cut alignment may not be accurately represented in the OMS drawing. Please consult your local representative for exact specifications.  
 \*\*\*Note: Unit Availability and Price is Subject to Change



**REVIEWED**  
 By Dan.Bruechert at 3:40 pm, Jul 29, 2021

Line #8 Qty: 1	Mark Unit: FRONT OFFICE RIGHT SIDE	Net Price:	1,387.11
		Ext. Net Price:	USD 1,387.11

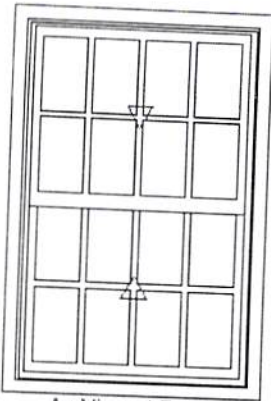


Stone White Exterior  
 White Interior  
 Elevate Double Hung  
 Outside of Exterior Casing 40" X 58 1/4"  
 Rough Opening 37 5/8" X 55 3/8"  
 Top Sash  
 Stone White Exterior  
 White Interior  
 IG  
 Low E2 w/Argon  
 Stainless Perimeter and Spacer Bar  
 7/8" SDL - With Spacer Bar - Stainless  
 Rectangular - Special Cut 4W2H  
 Stone White Ext - White Int  
 Bottom Sash  
 Stone White Exterior  
 White Interior  
 IG

Accepted:

Processed on: 6/4/2021 9:04:05 AM

Page 8 of 12



As Viewed From The Exterior

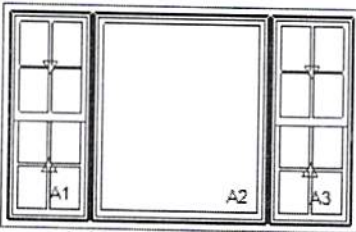
Entered As: OC  
 FS 36 5/8" X 54 7/8"  
 OC 40" X 58 1/4"  
 RO 37 5/8" X 55 3/8"

**Egress Information**

Width: 33 1/2" Height: 22 17/32"  
 Net Clear Opening: 5.24 SqFt  
 Ultrex Fiberglass: AAMA 624

- Low E2 w/Argon
- Stainless Perimeter and Spacer Bar
- 7/8" SDL - With Spacer Bar - Stainless
- Rectangular - Special Cut 4W2H
- Stone White Ext - White Int
- White Weather Strip Package
- White Sash Lock
- Exterior Aluminum Screen
- Stone White Surround
- Charcoal Fiberglass Mesh
- 6 9/16" Jamb
- Jamb Extension from 4 9/16" to 6 9/16"
- Casing Top and Sides
- Stone White BMC
- With Sill Nosing
- \*\*\*Exterior Casing Ship Loose
- Thru Jamb Installation
- \*\*\*Note: Divided lite cut alignment may not be accurately represented in the OMS drawing. Please consult your local representative for exact specifications.
- \*\*\*Note: Unit Availability and Price is Subject to Change

Line #9	Mark Unit: FRONT TRIPLES	Net Price:		3,090.14
Qty: 2		Ext. Net Price:	USD	6,180.28



As Viewed From The Exterior

Entered As: OC  
 FS 92 5/8" X 54 7/8"  
 OC 96" X 58 1/4"  
 RO 93 5/8" X 55 3/8"

**Egress Information A1, A3**

Width: 19 7/16" Height: 22 17/32"  
 Net Clear Opening: 3.04 SqFt  
**Egress Information A2**  
 No Egress Information available.  
 Ultrex Fiberglass: AAMA 624

**Feature Mismatch: Divided Lite Options**

- Stone White Exterior
- White Interior
- 3W1H - Rectangle Assembly
- Assembly Outside of Exterior Casing
- 96" X 58 1/4"
- Assembly Rough Opening
- 93 5/8" X 55 3/8"

**Unit: A1**

- Elevate Double Hung
- Basic Frame 22 9/16" X 54 7/8"
- Rough Opening 23 9/16" X 55 3/8"

- Top Sash
  - Stone White Exterior
  - White Interior
  - IG
  - Low E2 w/Argon
  - Stainless Perimeter and Spacer Bar
  - 7/8" SDL - With Spacer Bar - Stainless
  - Rectangular - Special Cut 2W2H
  - Stone White Ext - White Int
- Bottom Sash
  - Stone White Exterior
  - White Interior
  - IG
  - Low E2 w/Argon
  - Stainless Perimeter and Spacer Bar
  - 7/8" SDL - With Spacer Bar - Stainless
  - Rectangular - Special Cut 2W2H
  - Stone White Ext - White Int
  - White Weather Strip Package
  - White Sash Lock
  - Exterior Aluminum Screen
  - Stone White Surround
  - Charcoal Fiberglass Mesh

**APPROVED**

Montgomery County  
 Historic Preservation Commission

**REVIEWED**

By Dan.Bruechert at 3:40 pm, Jul 29, 2021

Accepted:

Processed on: 6/4/2021 9:04:05 AM

Page 9 of 12