



HISTORIC PRESERVATION COMMISSION

Isiah Leggett
County Executive

William Kirwan
Chairman

Date: December 18, 2018

MEMORANDUM

TO: Diane Schwartz Jones
Department of Permitting Services

FROM: Michael Kyne
Historic Preservation Section
Maryland-National Capital Park & Planning Commission

SUBJECT: Historic Area Work Permit for new signage

The Montgomery County Historic Preservation Commission (HPC) has reviewed the attached application for a Historic Area Work Permit (HAWP). This application was **Approved** at the September 19, 2018 Historic Preservation Commission meeting.

The HPC staff has reviewed and stamped the attached construction drawings.

THE BUILDING PERMIT FOR THIS PROJECT SHALL BE ISSUED CONDITIONAL UPON ADHERENCE TO THE ABOVE APPROVED HAWP CONDITIONS AND MAY REQUIRE APPROVAL BY DPS OR ANOTHER LOCAL OFFICE BEFORE WORK CAN BEGIN.

Applicant: Jubilee Associates of Maryland
Address: 10408 Montgomery Avenue, Kensington

This HAWP approval is subject to the general condition that the applicant will obtain all other applicable Montgomery County or local government agency permits. After the issuance of these permits, the applicant must contact this Historic Preservation Office if any changes to the approved plan are made. Once work is complete the applicant will contact Michael Kyne at 301.563.3403 or michael.kyne@montgomeryplanning.org to schedule a follow-up site visit.



Jubilee Association of Maryland, Inc.

8-1-18

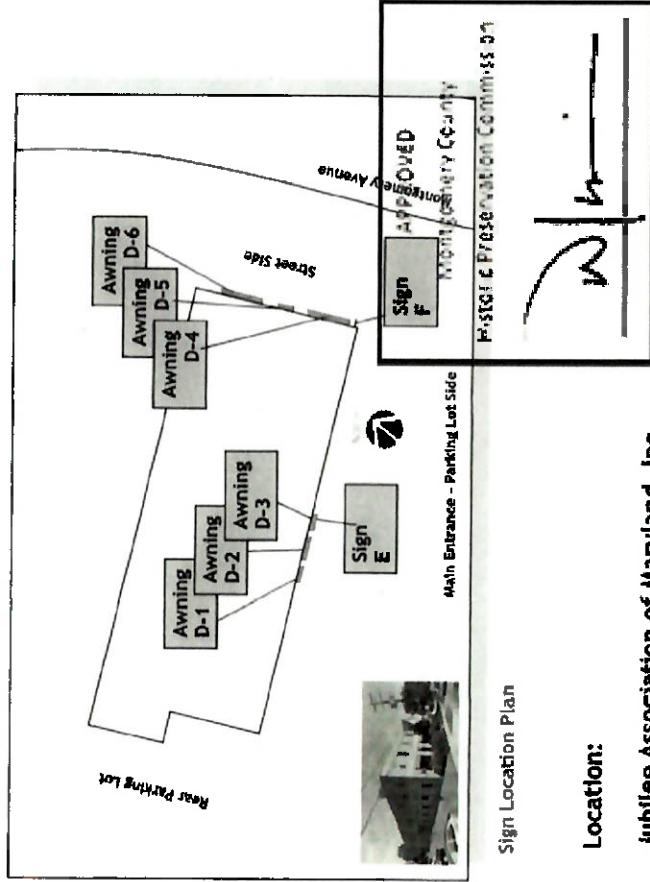


Location Map



Location Aerial View

- 6 Qty
 Remove Old / install New Fabric Awning Canopy On Existing Frame
- New Capri Blue Sunbrella
 - No Graphics Installed On Awnings



Sign Location Plan

Location:

Jubilee Association of Maryland, Inc.
 10408 Montgomery Avenue
 Kensington, MD 20895

REVIEWED

By Michael.Kyne at 2:55 pm, Dec 18, 2018

Contact Us:

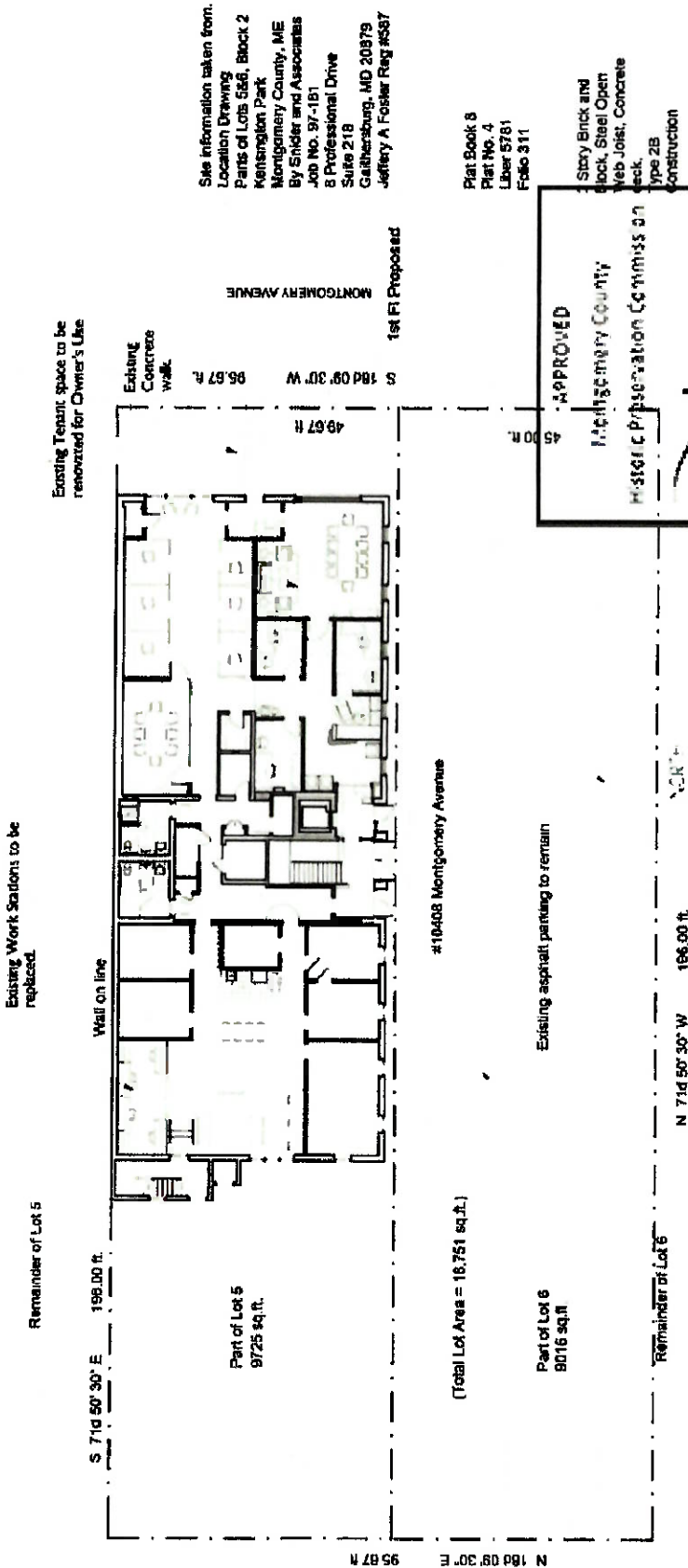
Ph. 301.474.5051

Sales@SuburbanSigns.com



Serving The Metro Washington Area Since 1949

COPYRIGHT NOTICE This original design and or description and the disclosure thereof are submitted with the mutual agreement that the recipient will not produce nor manufacture said design without authority granted in writing from Suburban Signs, Inc. The disclosures and constructions are the exclusive and confidential property of Suburban Signs, Inc. until released by the same through execution of a production order.



Site Plan

Scale: 1" = 20'

REVIEWED
 By Michael.Kyne at 2:55 pm, Dec 18, 2018



www.SUBURBANSIGNS.com

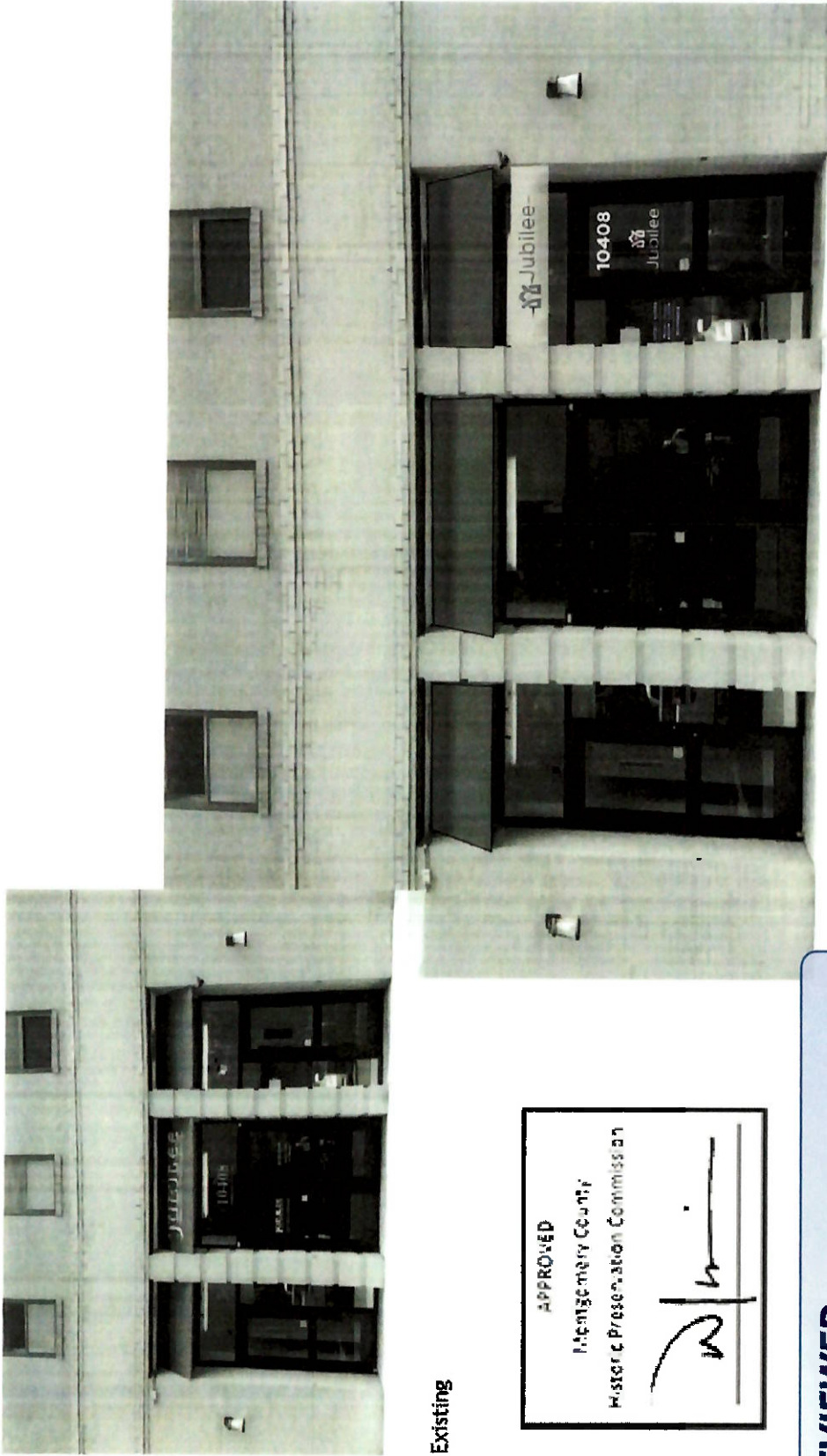
Serving The Metro Washington Area Since 1949

Contact Us:
 Ph. 301.474.5051
 Sales@SuburbanSigns.com

COPYRIGHT NOTICE This original design and or description and the disclosure thereof are submitted with the mutual agreement that the recipient will not produce nor manufacture said design without authority granted in writing from Suburban Signs, Inc. The disclosures and constructions are the exclusive and confidential property of Suburban Signs, Inc. until released by the same through execution of a production order.

Jubilee - [D.] Recover Existing Awnings with Sunbrella Capri Blue at Main Entrance
- Parking Lot Side

6-20-18



Existing

APPROVED
Hennepine County
Historic Preservation Commission
[Signature]

REVIEWED

By Michael.Kyne at 2:54 pm, Dec 18, 2018

Recover Existing Awnings



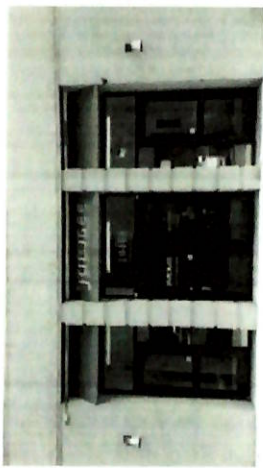
WWW.SUBURBANSIGNS.COM

Serving The Metro Washington Area Since 1949

Contact Us:
Ph. 301.474.5051
Sales@SuburbanSigns.com

COPYRIGHT NOTICE This original design and or description and the disclosure thereof are submitted with the mutual agreement that the recipient will not produce nor manufacture said design without authority granted in writing from Suburban Signs, Inc. The disclosures and restrictions are the exclusive and confidential property of Suburban Signs, Inc. until released by the same through execution of a production order.


**Jubilee - [D.] Recover Existing Awnings with Sunbrella Capri Blue at Main Entrance
- Parking Lot Side**



EXISTING



APPROVED
Montgomery County
Historic Preservation Commission



Recover Existing Awnings



REVIEWED

By Michael Kyne at 2:54 pm, Dec 18, 2018

Main Entrance - Parking Lot Side

8-27-2018



www.SUBURBANSIGNS.com

Serving The Metro Washington Area Since 1949

Contact Us:

Ph. 301.474.5051

Sales@SuburbanSigns.com

COPYRIGHT NOTICE: This original design and or description and the disclosure thereof are submitted with the mutual agreement that the recipient will not produce nor manufacture said design without authority granted in writing from Suburban Signs, Inc. The disclosures and restrictions are the exclusive and confidential property of Suburban Signs, Inc. until released by the same through execution of a production order.

Jubilee - [D.] Recover Existing Awnings with Sunbrella Capri Blue - Street Side

8-27-2018



APPROVED
Montgomery County
Historic Preservation Commission

REVIEWED

By Michael.Kyne at 2:54 pm, Dec 18, 2018



www.SUBURBANSIGNS.com

Serving The Metro Washington Area Since 1949

Contact Us:

Ph. 301.474.5051

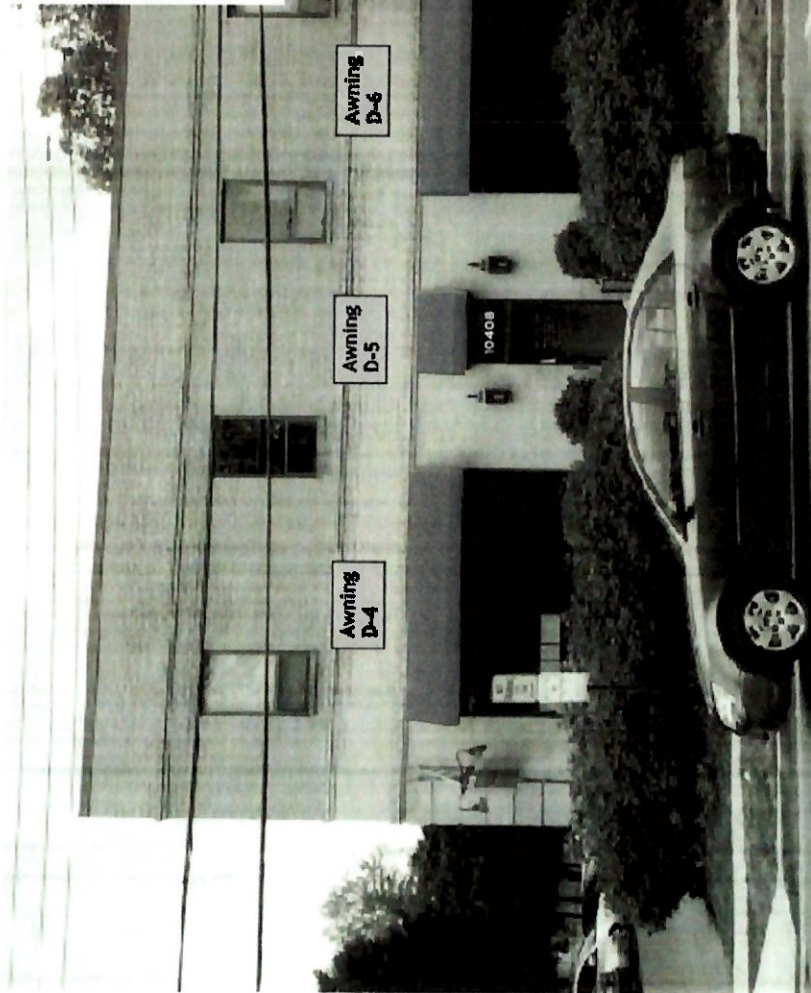
Sales@SuburbanSigns.com

COPYRIGHT NOTICE This original design and or description and the disclosure thereof are submitted with the mutual agreement that the recipient will not produce nor manufacture said design without authority granted in writing from Suburban Signs, Inc. The disclosures and conditions are the exclusive and confidential property of Suburban Signs, Inc. until released by the same through execution of a production order.

**Jubilee - [D.] Recover Existing Awnings with Sunbrella Capri Blue
- Street Side**



Existing

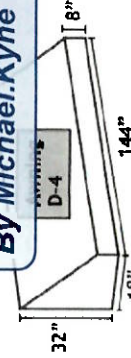
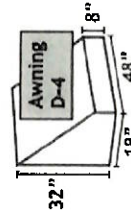
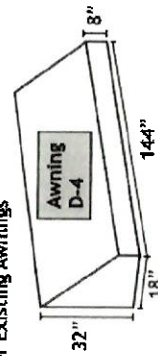


Awning D-4

Awning D-5

Awning D-6

Recover Existing Awnings



REVIEWED

By Michael.Kyne at 2:54 pm, Dec 18, 2018

8-27-2018

Street Side - Montgomery Avenue

APPROVED

Montgomery County
Master Preservation Commission



www.SUBURBANSIGNS.com

Serving The Metro Washington Area Since 1949

Contact Us:

Ph. 301.474.5051

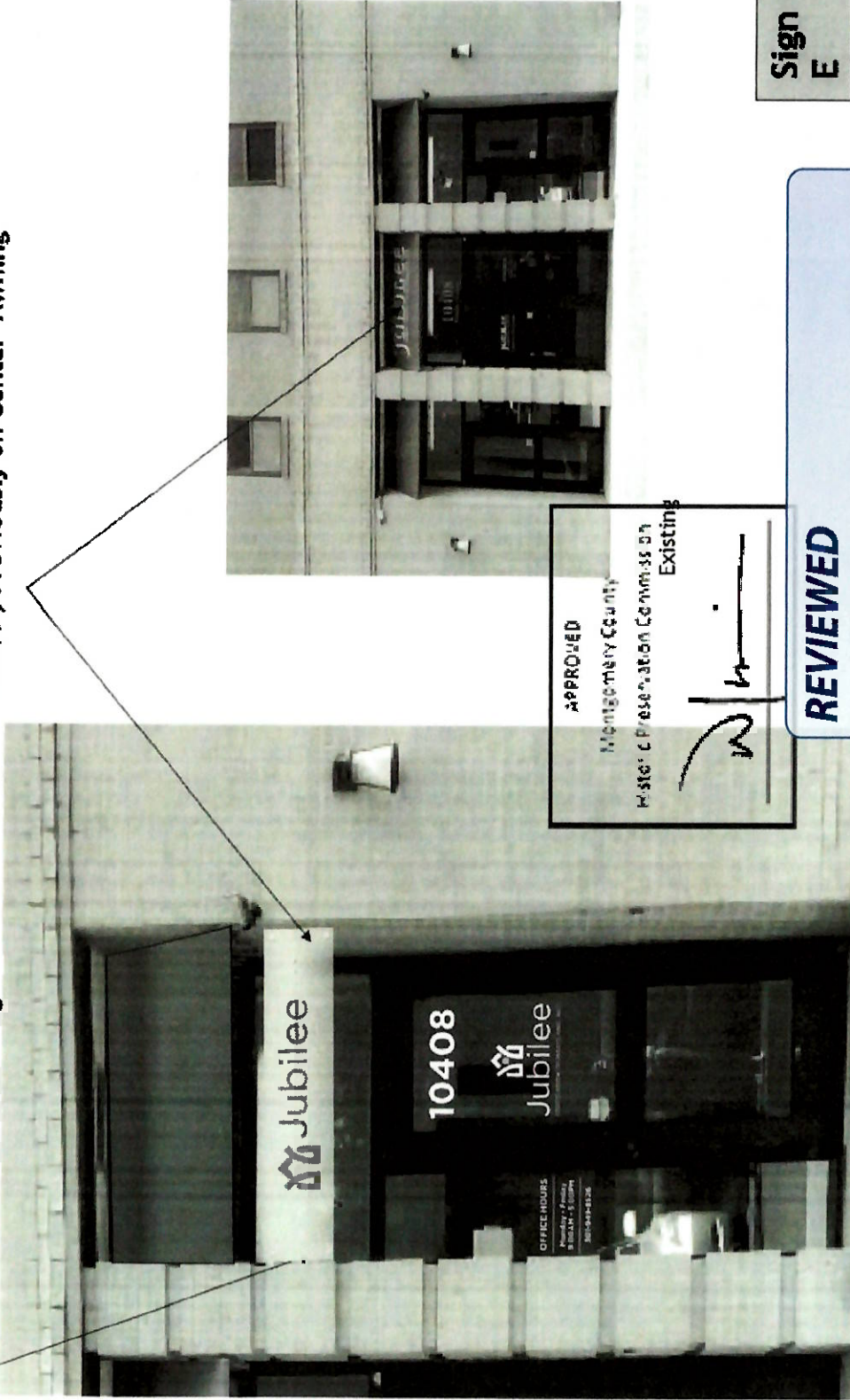
Sales@SuburbanSigns.com

COPYRIGHT NOTICE This original design and or description and the disclosure thereof are submitted with the mutual agreement that the recipient will not produce nor manufacture said design without authority granted in writing from Suburban Signs, Inc. The disclosures and constructions are the exclusive and confidential property of Suburban Signs, Inc. until released by the same through execution of a production order.

Jubilee - [E.] - Acrylic Sign Under Awning

8-1-18

- [E.] - Sign Under Awning above right door, Etched Acrylic with graphics on 1st Surface
[Attached to the wall with angle brackets with decorative caps at each end]
12" x 59" Sign to mark New Main Entrance , Previously on Center Awning



**Sign
E**

REVIEWED

By Michael.Kyne at 2:54 pm, Dec 18, 2018



www.SUBURBANSIGNS.COM

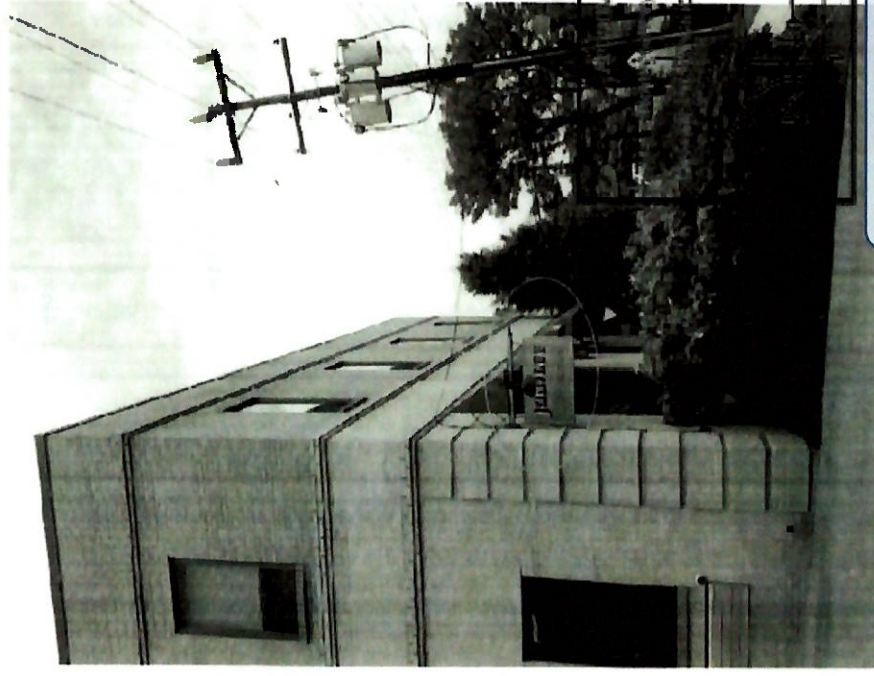
Serving The Metro Washington Area Since 1949

Contact Us:
Ph. 301.474.5051
Sales@SuburbanSigns.com

COPYRIGHT NOTICE: This original design and/or description and the disclosure thereof are submitted with the mutual agreement that the recipient will not produce nor manufacture said design without authority granted in writing from Suburban Signs, Inc. The disclosures and restrictions are the exclusive and confidential property of Suburban Signs, Inc. until released by the same through execution of a production order.

Jubilee - [F.] Exterior - Custom Acrylic Sign Doublesided with Custom Bracket having custom lighting
 - Replacing Existing Sign with exact size sign 24" x 40 " panel

8-1-18



Sign
F

REVIEWED
 By Michael.Kyne at 2:54 pm, Dec 18, 2018



www.SUBURBANSIGNS.com

Serving The Metro Washington Area Since 1949

Contact Us:
 Ph. 301.474.5051
 Sales@SuburbanSigns.com

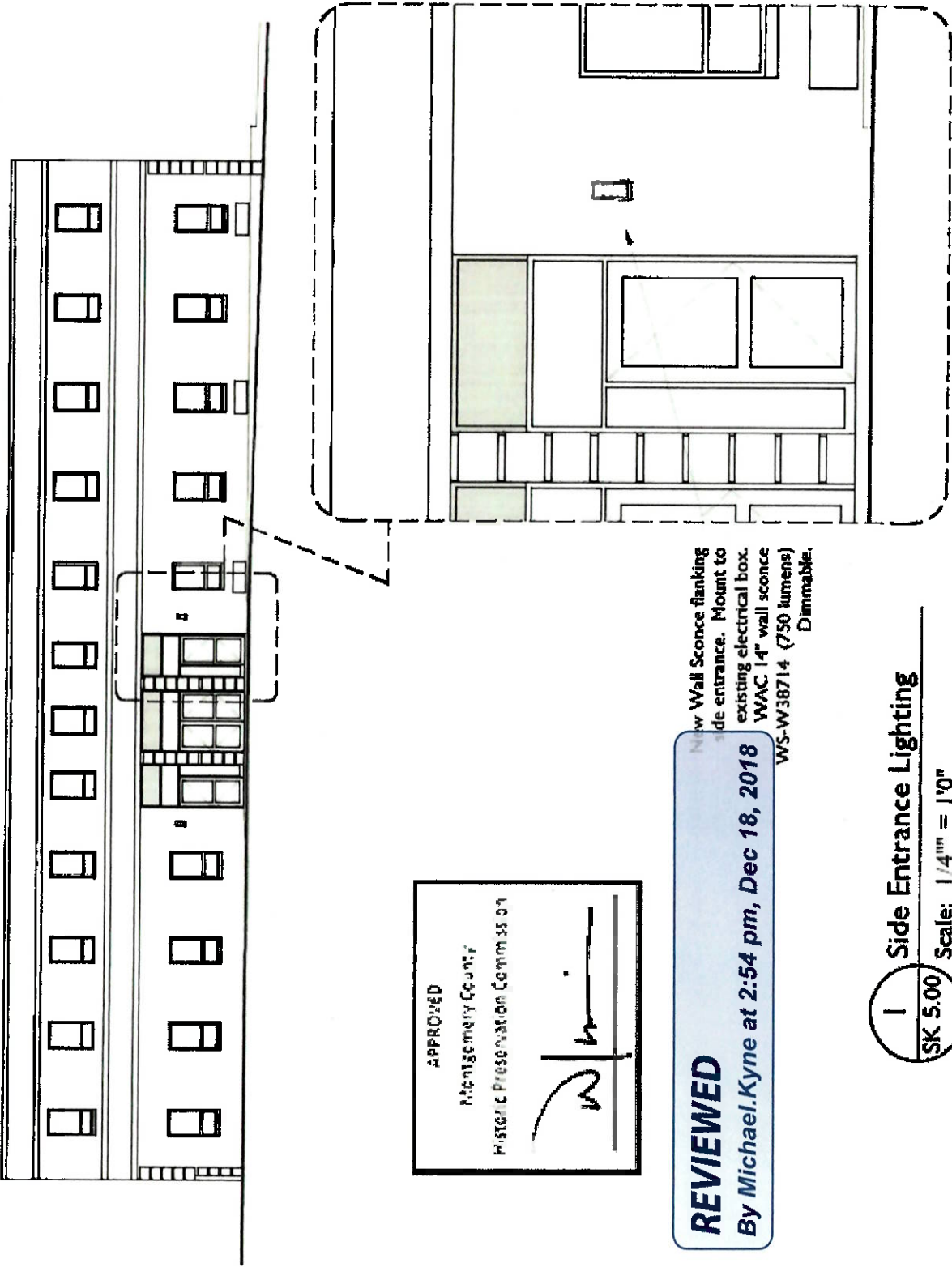
COPYRIGHT NOTICE This original design and or description and the disclosure thereof are submitted with the mutual agreement that the recipient will not produce nor manufacture said design without authority granted in writing from Suburban Signs, Inc. The disclosures and constructions are the exclusive and confidential property of Suburban Signs, Inc. until released by the same through execution of a production order.

DPCorrad, Architect
 1216 Upshur Street NE
 Washington D.C. 20017
 202.526.8855 LP:CON/ADP/ET/KOR/NEI

Jubilee Association of Maryland
 10408 Montgomery Avenue
 Kensington, Maryland 20895

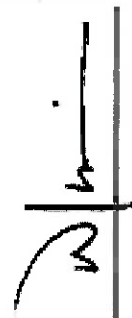
Jubilee Assoc.
 Entrance Lighting - Side
 Scale: SK 1/4" = 1'-0"
 Date: 2018 05 10

CSK
 5.00



New Wall Sconce flanking
 side entrance. Mount to
 existing electrical box.
 WAC 14" wall sconce
 WS-W38714 (750 lumens)
 Dimmable.

APPROVED
 Montgomery County
 Historic Preservation Commission



REVIEWED
 By Michael Kyne at 2:54 pm, Dec 18, 2018

1
 SK 5.00
 Side Entrance Lighting
 Scale: 1/4" = 1'-0"


DPConrad, Architect
 1216 Upshur Street NE
 Washington DC, 20017
 202.526.8855 DPConrad@verizon.net

Jubilee Association of Maryland
 10408 Montgomery Avenue
 Kensington, Maryland 20895

Jubilee Assoc.
 Entrance Lighting-Front
 Scale: 5/8" = 1'-0"
 Date: 2018 03 10

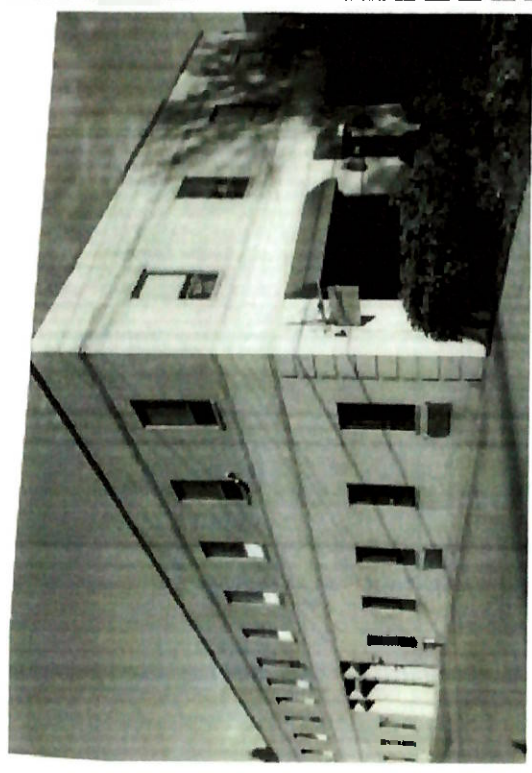
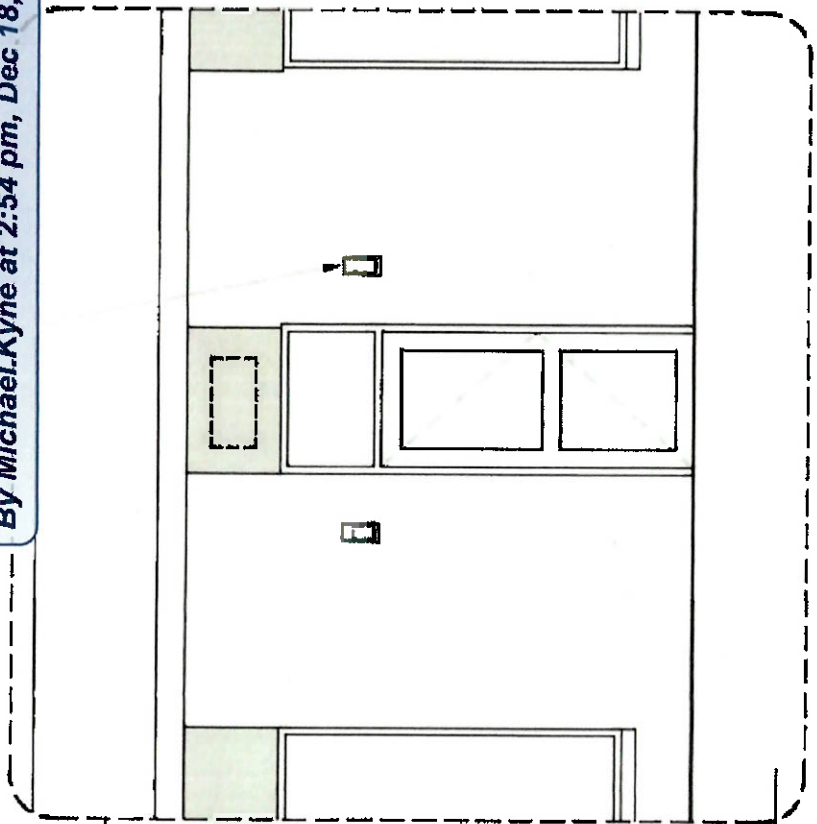
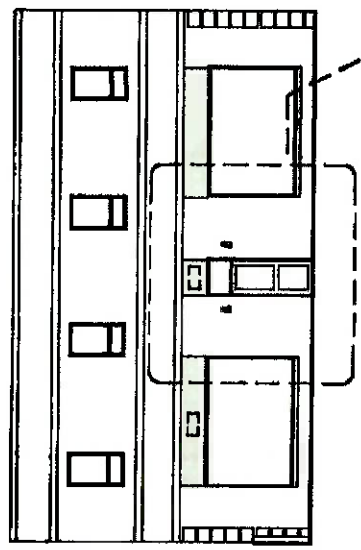
CSK
 5.01

APPROVED
 Montgomery County
 Historic Preservation Commission



REVIEWED
 By Michael.Kyne at 2:54 pm, Dec 18, 2018

New Wall Sconce flanking
 front entrance. Mount to
 existing electrical box.
 WAC 10" wall sconce
 WS-W38710 (700 lumens)
 Dimmable.



1
 SK 5.01
 Front Entrance Lighting
 Scale: 1/4" = 1'-0"

DPCorrad, Architect
 1216 Upshur Street NE
 Washington D.C. 20017
 202.529.8807 EPCorrad@DPCorrad.com

Jubilee Association of Maryland
 10408 Montgomery Avenue
 Kensington, Maryland 20895

Date: 2018 05 10

Jubilee Assoc.
 Entrance Light Fixture
 Scale: 5/8"=1'-0"

CSK
 5.02

WAC LIGHTING
 Responsible Lighting®

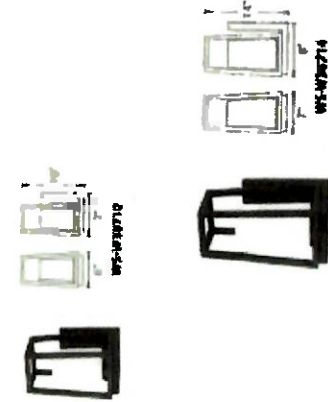
HURRICANE - model: WS-W5387
 dwelled™ LED Outdoor

Fixture Type:

Catalog Number:

Project:

Location:



SPECIFICATIONS
 Construction: Aluminum and Mouth Blown Optic Glass
 Light Source: High Output LED
 Finish: Black (R6)
 Standards: ETL & UL, wall mounted listed, IP 65, CEC Title 24

PRODUCT DESCRIPTION
 A modern interpretation of a familiar form, Hurricane R65 glass mounted top air shows Hurricane features a mouth blown in front light (MFL) with solid die cast aluminum headboard that is adjustable with a powder coated finish. The light engine is factory sealed for maximum protection against the harshest elements.

FEATURES

- Light engine is factory sealed for maximum protection from the elements.
- Source may be raised 1.80" when required.
- Solid aluminum construction.
- Replacement glass available.
- Mouth blown optical grade glass.
- No transformers or wires required.
- Color Temp: 3000K
- 24V, 90
- Operating 100% 56 B.V.
- Stand Life: 50,000 hours
- Repair 1.5hr

WAC	LED	Watt	Delivered Lumens	Foot
WS-W5387				60

ORDER NUMBER
 WS-W5387-01
 WS-W5387-01
 WS-W5387-01

APPROVED
 Montgomery County
 Historic Preservation Commission

[Signature]

Central Distribution Center
 1600 Sherrill Ave. Ct.
 Marietta, GA 30067

Western Distribution Center
 1700 Archibald Street
 Orange, CA 92668

Northwestern/Eastern Distribution Center
 44 Harbor Park Drive
 Port Washington, NY 11050

1-800-4-A-LIGHT

REVIEWED
 By Michael.Kyne at 2:54 pm, Dec 18, 2018