



HISTORIC PRESERVATION COMMISSION

Marc Elrich
County Executive

Robert K. Sutton
Chairman

Date: September 10, 2024

MEMORANDUM

TO: Rabbiah Sabbakhan, DPS Director Department of Permitting Services
Dan Bruechert

FROM: Historic Preservation Section
Maryland-National Capital Park & Planning Commission
Historic Area Work Permit #1069299 & 1070638 - Fenestration

SUBJECT: Alteration, Porch Rehabilitation, and Siding Replacement

The Montgomery County Historic Preservation Commission (HPC) has reviewed the attached application for a Historic Area Work Permit (HAWP). This application was **approved** at the September 4, 2024 HPC meeting.

The HPC staff has reviewed and stamped the attached construction drawings.

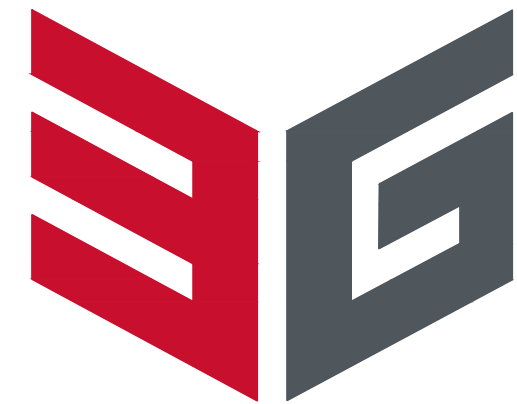
THE BUILDING PERMIT FOR THIS PROJECT SHALL BE ISSUED CONDITIONAL UPON ADHERENCE TO THE ABOVE APPROVED HAWP CONDITIONS AND MAY REQUIRE APPROVAL BY DPS OR ANOTHER LOCAL OFFICE BEFORE WORK CAN BEGIN.

Applicant: Lawrence Smith
Address: 15911 Redland Rd., Derwood

This HAWP approval is subject to the general condition that the applicant will obtain all other applicable Montgomery County or local government agency permits. After the issuance of these permits, the applicant must contact this Historic Preservation Office if any changes to the approved plan are made. Once work is complete the applicant will contact Dan Bruechert at 301-563-3408 or dan.bruechert@montgomeryplanning.org to schedule a follow-up site visit.



COUNTY
APPROVAL



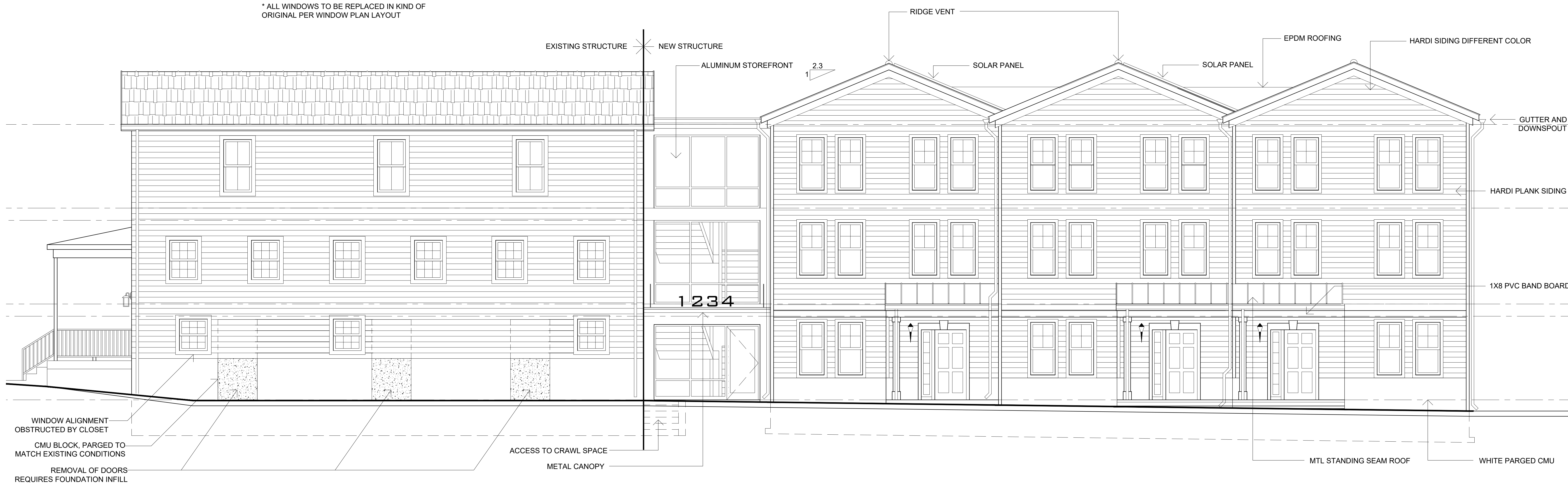
ARCHITECTS

3G ARCHITECTS, LLC.
1749 OLD MEADOW ROAD
SUITE 506
MCLEAN, VA 22102
703-506-6669
3GARCHITECTS.COM

Professional Certification:
I certify that these documents
were prepared or approved
by me, and that I am a duly
licensed architect under the
laws of the State of Maryland,
Licence number 12387,
Expiration date: 3-30-2026.

Consultants

* ALL WINDOWS TO BE REPLACED IN KIND OF
ORIGINAL PER WINDOW PLAN LAYOUT



3 FRONT ELEVATION
SCALE: 1/4" = 1'-0"

WINDOW ALIGNMENT
OBSTRUCTED BY CLOSET
CMU BLOCK, PARGED TO
MATCH EXISTING CONDITIONS
REMOVAL OF DOORS
REQUIRES FOUNDATION INFILL

ACCESS TO CRAWL SPACE
METAL CANOPY

MTL STANDING SEAM ROOF
WHITE PARGED CMU

Client

**CLW REAL
ESTATE
GROUP**

15909 CHIEFTAIN AVE
ROCKVILLE, MD
20855

CLW REAL
ESTATE GROUP

Drawings

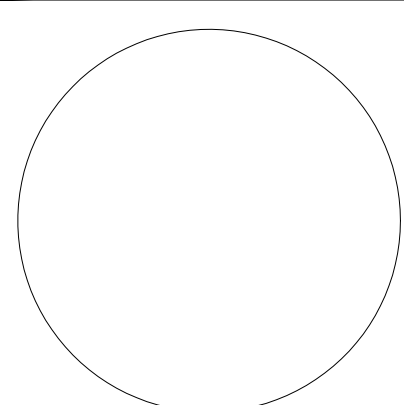
ELEVATIONS

DATE 08/09/24 ISSUE REVIEW SET

E-SIG

APPROVED
Montgomery County
Historic Preservation Commission
Robert A. Norton

REVIEWED
By Dan.Bruechert at 2:54 pm, Sep 10, 2024



A200

COUNTY
APPROVAL



ARCHITECTS

3G ARCHITECTS, LLC.
1749 OLD MEADOW ROAD
SUITE 506
MCLEAN, VA 22102
703-506-6669
3GARCHITECTS.COM

Professional Certification:
I certify that these documents
were prepared or approved
by me, and that I am a duly
licensed architect under the
laws of the State of Maryland,
Licence number 12387,
Expiration date: 3-30-2026.

Consultants



1 REAR ELEVATION
SCALE: 1/4" = 1'-0"

Client
CLW REAL ESTATE GROUP

15909 CHIEFTAIN AVE
ROCKVILLE, MD
20855

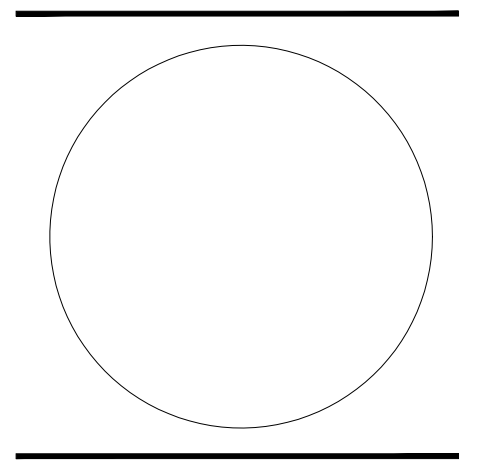
CLW REAL ESTATE GROUP
Drawings
ELEVATIONS

APPROVED
Montgomery County
Historic Preservation Commission
[Signature]

REVIEWED
By Dan.Bruechert at 2:54 pm, Sep 10, 2024

DATE	ISSUE
08/09/24	REVIEW SET

E-SIG



A210

COUNTY
APPROVAL



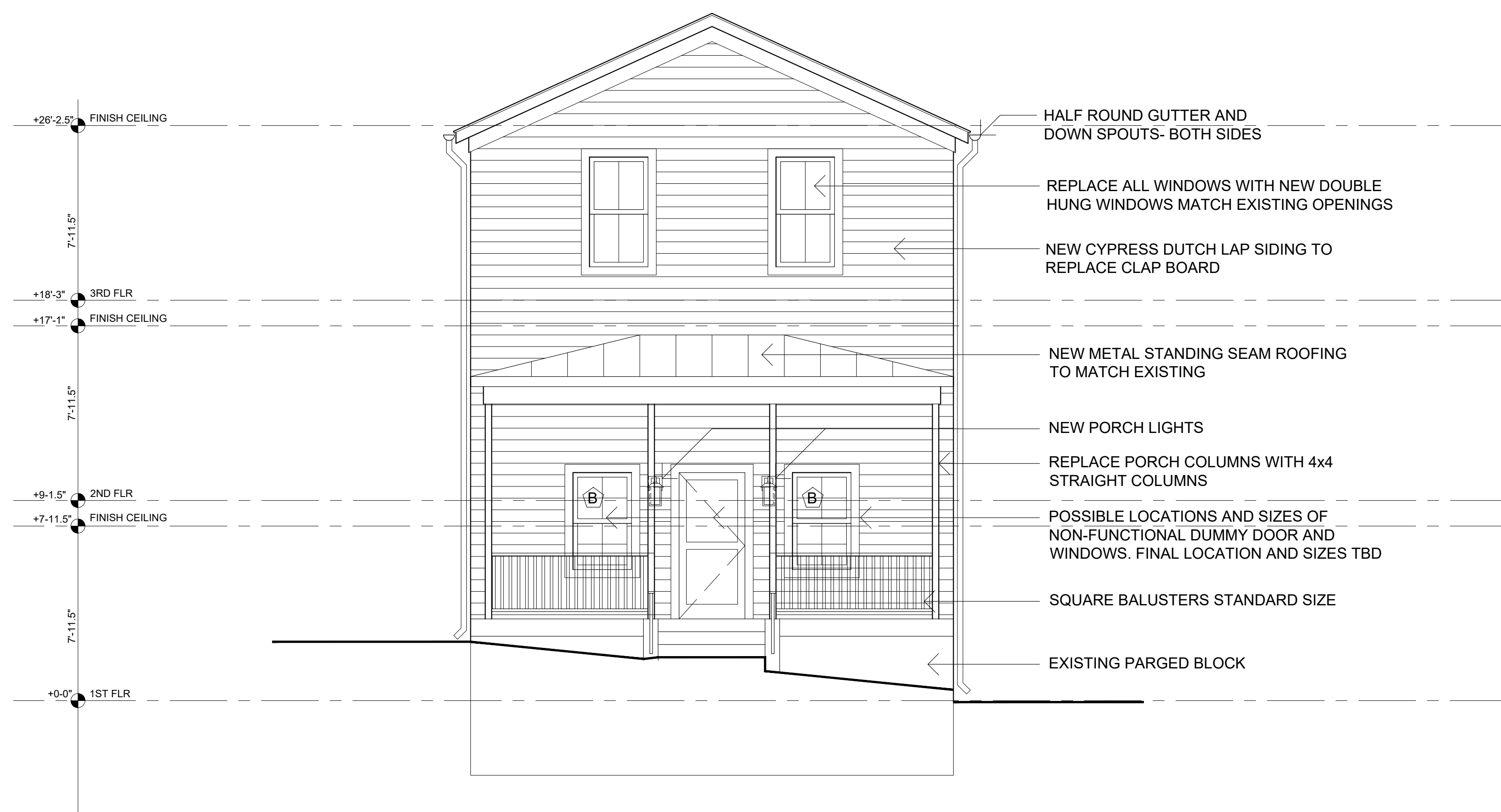
ARCHITECTS

3G ARCHITECTS, LLC.
1749 OLD MEADOW ROAD
SUITE 506
MCLEAN, VA 22102
703-506-6669
3GARCHITECTS.COM

Professional Certification:
I certify that these documents
were prepared or approved
by me, and that I am a duly
licensed architect under the
laws of the State of Maryland,
Licence number 12387,
Expiration date: 3-30-2026.

Consultants

* ALL WINDOWS TO BE REPLACED IN KIND OF
ORIGINAL PER WINDOW PLAN LAYOUT



1 FRONT ELEVATION
SCALE: 1/4" = 1'-0"

APPROVED
Montgomery County
Historic Preservation Commission
[Signature]

REVIEWED
By Dan.Bruechert at 2:54 pm, Sep 10, 2024

Client

**CLW REAL
ESTATE
GROUP**

15909 CHIEFTAIN AVE
ROCKVILLE, MD
20855

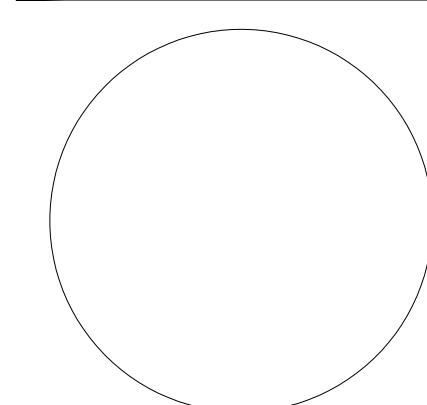
CLW REAL
ESTATE GROUP

Drawings

ELEVATIONS

DATE	ISSUE
08/09/24	REVIEW SET

E-SIG



A220

COUNTY
APPROVAL



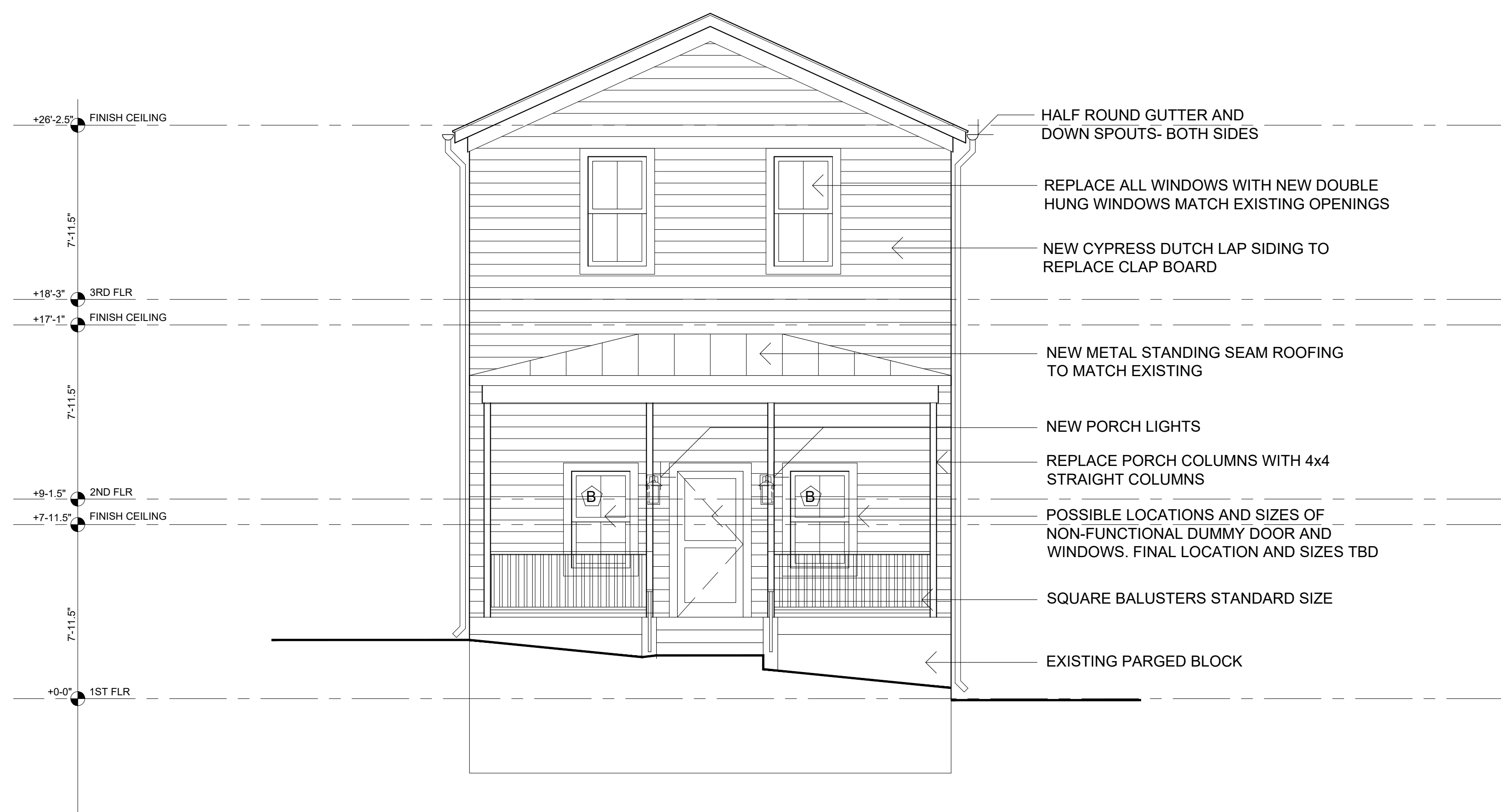
ARCHITECTS

3G ARCHITECTS, LLC.
1749 OLD MEADOW ROAD
SUITE 506
MCLEAN, VA 22102
703-506-6669
3GARCHITECTS.COM

Professional Certification:
I certify that these documents
were prepared or approved
by me, and that I am a duly
licensed architect under the
laws of the State of Maryland,
Licence number 12387,
Expiration date: 3-30-2026.

Consultants

* ALL WINDOWS TO BE REPLACED IN KIND OF
ORIGINAL PER WINDOW PLAN LAYOUT



1 FRONT ELEVATION
SCALE: 1/4" = 1'-0"

APPROVED
Montgomery County
Historic Preservation Commission
[Signature]

REVIEWED
By Dan.Bruechert at 2:54 pm, Sep 10, 2024

Client

**CLW REAL
ESTATE
GROUP**

15909 CHIEFTAIN AVE
ROCKVILLE, MD
20855

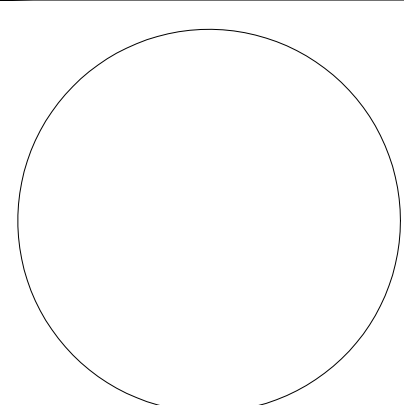
CLW REAL
ESTATE GROUP

Drawings

ELEVATIONS

DATE	ISSUE
08/09/24	REVIEW SET

E-SIG



A220

APPROVED
Montgomery County
Historic Preservation Commission



REVIEWED

By Dan.Bruechert at 2:55 pm, Sep 10, 2024



105 Drop Siding

TW628



105 DROP SIDING

Choose your options:

Species:

Product Code: 105-DROP-SIDING



CALL TO ORDER
864-987-9663

REVIEWED

By Dan.Bruechert at 2:55 pm, Sep 10, 2024

PRE-FINISHED PAINT, STAIN & COLORS

Ask how to save time, money and protect any of our lumber with our pre-stain and pre-primer color options.



ADD 1 or 2 COATS OF STAIN | PAINT | SEALER

DESCRIPTION

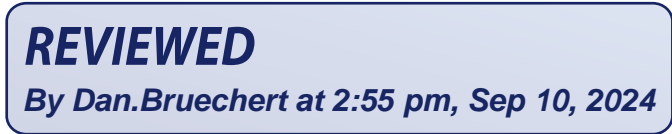
Pattern 105, Dutch Lap, German Lap, Drop Siding or Cove Lap Siding. It's known by all of these names, but the profile is the same.

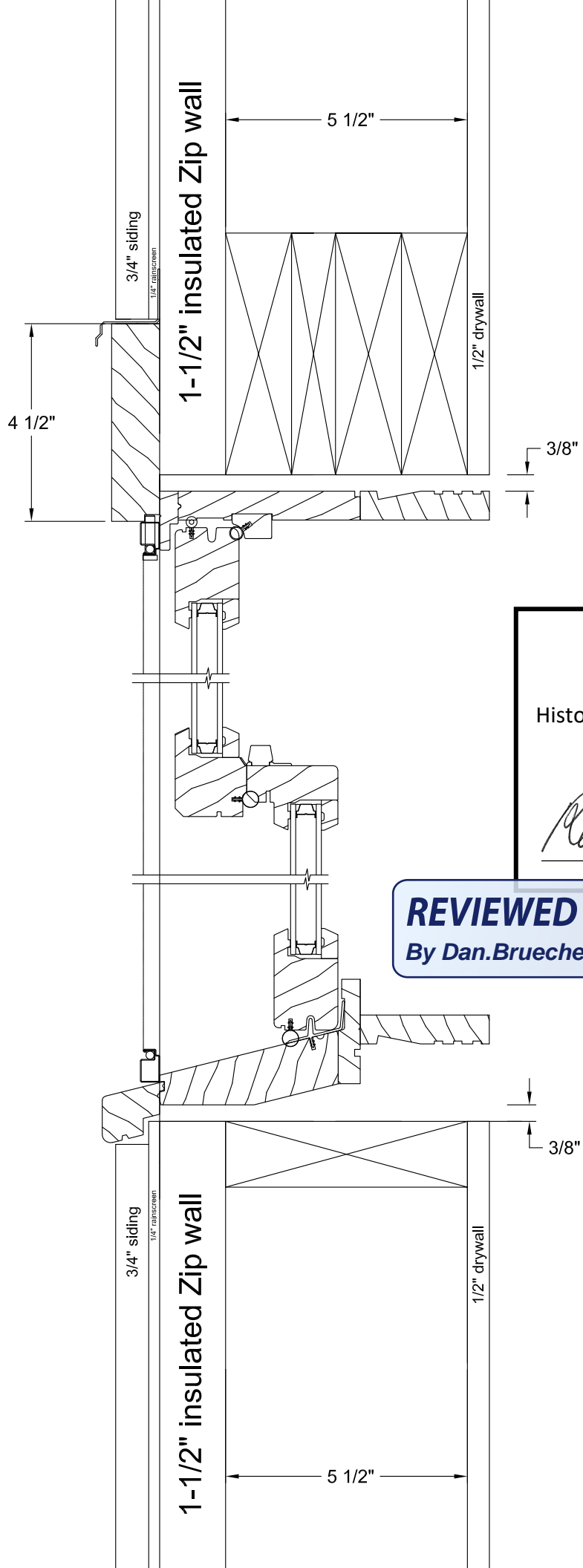
Comes in 3/4" thick x 6 3/8" (A profile), 7 1/8" (B profile) or 7 3/4"

(C profile) tall.

Our Profile number is TW628 and comes in 3 different sizes.

Yellow Pine siding. Cypress siding. This product is available with a Sherwin Williams stain or primer. Available in Cypress, Southern Yellow Pine, and Western Red Cedar.





APPROVED
 Montgomery County
 Historic Preservation Commission

Robert H. [Signature]

REVIEWED
 By Dan.Bruechert at 2:55 pm, Sep 10, 2024



Susan Sanders

QUOTE BY : Susan Sanders

SOLD TO :

PO# :

Ship Via : Ground

QUOTE # : JW240400DXX - Version 0

SHIP TO :

PROJECT NAME: 15911 Redland Road

REFERENCE : Wood/Wood - Primed Ext/Int - Flat Casing

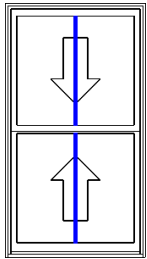
Confirm extension jamb depth.
 Extension Jamb is quoted at (4) sides.
 4-1/2 Flat Casing and Sill nosing is quoted.
 Hardware color is quoted as white. Please confirm.
 Screen color is quoted as Ivory.
 Drip Cap color is quoted as Ivory.
 False windows are quoted as Double Hung Units.
 Bedroom windows sizes have been altered from the original sizes to meet egress. Please confirm sizes.
 Please confirm WOCD's are not required. Windows do not include child safety latches.
 Please confirm if any windows need to be tempered safety glazing per safety glazing requirements.

U-Factor Weighted Average: 0.29

SHGC Weighted Average: 0.18

LINE	LOCATION SIZE INFO	BOOK CODE DESCRIPTION	NET UNIT PRICE	QTY	EXTENDED PRICE
------	-----------------------	--------------------------	-------------------	-----	-------------------

Line 1	1st - Front False DH Window Rough Opening : 39 X 70	Frame Size : 38 1/4 X 69 1/4 (Outside Casing Size: 45 7/8 X 73 15/16), Siteline Wood Double Hung, Auralast Pine, Primed Exterior, Primed Interior, 4 1/2" Flat Casing, Standard Sill Nosing, DripCap, Ivory Drip Cap, 8 1/2 Jamb, 4/4 Thick, Standard Double Hung, White Jambliner, Concealed Jambliner White Hardware, US National-WDMA/ASTM, PG 35, Insulated SunResist Annealed Glass, Protective Film, Black Spacer, Argon Filled, Traditional Glz Bd, Primed Wood SDL, 7/8" Putty SDL w/Perm Wood Putty Int BAR, Light Bronze Shadow Bar, Colonial All Lite(s) 2 Wide 1 High Top, 2 Wide 1 High Btm, BetterVue Mesh Ivory Screen, *Custom-Width*, *Custom-Height*, IGThick=0.698(3/32 / 3/32), Clear Opening:34.5w, 31h, 7.4 sf U-Factor: 0.29, SHGC: 0.18, VLT: 0.42, Energy Rating: 13.00, CR: 60.00, CPD: JEL-N-885-01836-00001 PEV 2024.1.0.4593/PDV 7.293 (03/03/24)NW	\$1,559.19	1	\$1,559.19
--------	---	--	------------	---	------------



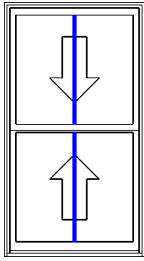
Viewed from Exterior.

APPROVED

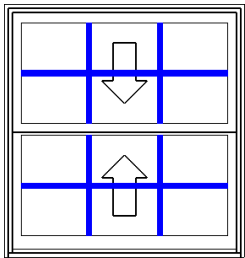
Montgomery County
Historic Preservation Commission



LINE	LOCATION SIZE INFO	BOOK CODE DESCRIPTION	NET UNIT PRICE	QTY	EXTENDED PRICE
Line 2	1st - Front False DH Window Rough Opening : 39 X 70	Frame Size : 38 1/4 X 69 1/4 (Outside Casing Size: 45 7/8 X 73 15/16), Sitaline Wood Double Hung, Auralast Pine, Primed Exterior, Primed Interior, 4 1/2" Flat Casing, Standard Sill Nosing, DripCap, Ivory Drip Cap, 8 1/2 Jamb, 4/4 Thick, Standard Double Hung, White Jambliner, Concealed Jambliner White Hardware, US National-WDMA/ASTM, PG 35, Insulated SunResist Annealed Glass, Protective Film, Black Spacer, Argon Filled, Traditional Glz Bd, Primed Wood SDL, 7/8" Putty SDL w/Perm Wood Putty Int BAR, Light Bronze Shadow Bar, Colonial All Lite(s) 2 Wide 1 High Top, 2 Wide 1 High Btm, BetterVue Mesh Ivory Screen, *Custom-Width*, *Custom-Height*, IGThick=0.698(3/32 / 3/32), Clear Opening:34.5w, 31h, 7.4 sf U-Factor: 0.29, SHGC: 0.18, VLT: 0.42, Energy Rating: 13.00, CR: 60.00, CPD: JEL-N-885-01836-00001 PEV 2024.1.0.4593/PDV 7.293 (03/03/24)NW			
			\$1,559.19	1	\$1,559.19
Line 3	1st - Bedroom (Meets Egress) Rough Opening : 45 1/2 X 48	Frame Size : 44 3/4 X 47 1/4 (Outside Casing Size: 52 3/8 X 51 15/16), Sitaline Wood Double Hung, Auralast Pine, Primed Exterior, Primed Interior, 4 1/2" Flat Casing, Standard Sill Nosing, DripCap, Ivory Drip Cap, 8 1/2 Jamb, 4/4 Thick, Standard Double Hung, White Jambliner, Concealed Jambliner White Hardware, US National-WDMA/ASTM, PG 35, Insulated SunResist Annealed Glass, Protective Film, Black Spacer, Argon Filled, Traditional Glz Bd, Primed Wood SDL, 7/8" Putty SDL w/Perm Wood Putty Int BAR, Light Bronze Shadow Bar, Colonial All Lite(s) 3 Wide 2 High Top, 3 Wide 2 High Btm, BetterVue Mesh Ivory Screen, *Custom-Width*, *Custom-Height*, IGThick=0.698(3/32 / 3/32), Clear Opening:41w, 20h, 5.7 sf U-Factor: 0.29, SHGC: 0.18, VLT: 0.42, Energy Rating: 13.00, CR: 60.00, CPD: JEL-N-885-01836-00001 PEV 2024.1.0.4593/PDV 7.293 (03/03/24)NW			
			\$1,534.77	1	\$1,534.77



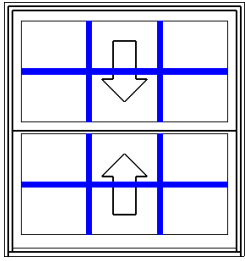
Viewed from Exterior.



Viewed from Exterior.

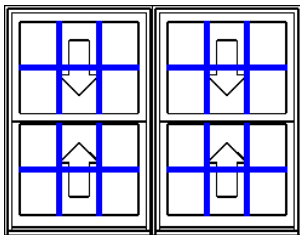
LINE	LOCATION SIZE INFO	BOOK CODE DESCRIPTION	NET UNIT PRICE	QTY	EXTENDED PRICE
------	-----------------------	--------------------------	-------------------	-----	-------------------

Line 4	1st - Bedroom (Meets Egress) Rough Opening : 45 1/2 X 48	Frame Size : 44 3/4 X 47 1/4 (Outside Casing Size: 52 3/8 X 51 15/16), Sitaline Wood Double Hung, Auralast Pine, Primed Exterior, Primed Interior, 4 1/2" Flat Casing, Standard Sill Nosing, DripCap, Ivory Drip Cap, 8 1/2 Jamb, 4/4 Thick, Standard Double Hung, White Jambliner, Concealed Jambliner White Hardware, US National-WDMA/ASTM, PG 35, Insulated SunResist Annealed Glass, Protective Film, Black Spacer, Argon Filled, Traditional Glz Bd, Primed Wood SDL, 7/8" Putty SDL w/Perm Wood Putty Int BAR, Light Bronze Shadow Bar, Colonial All Lite(s) 3 Wide 2 High Top, 3 Wide 2 High Btm, BetterVue Mesh Ivory Screen, *Custom-Width*, *Custom-Height*, IGThick=0.698(3/32 / 3/32), Clear Opening:41w, 20h, 5.7 sf U-Factor: 0.29, SHGC: 0.18, VLT: 0.42, Energy Rating: 13.00, CR: 60.00, CPD: JEL-N-885-01836-00001 PEV 2024.1.0.4593/PDV 7.293 (03/03/24)NW	\$1,534.77	1	\$1,534.77
--------	---	---	------------	---	------------



Viewed from Exterior.

Line 5	1st - Living Room Rough Opening : 62 X 48	Frame Size : 61 1/4 X 47 1/4 (Outside Casing Size: 68 7/8 X 51 15/16), Sitaline Wood Double Hung, Auralast Pine, 2 Wide Primed Exterior, Primed Interior, 4 1/2" Flat Casing, Standard Sill Nosing, DripCap, Ivory Drip Cap, 8 1/2 Jamb, 4/4 Thick, White Jambliner, Concealed Jambliner White Hardware, US National-WDMA/ASTM, DP 35, Insulated SunResist Annealed Glass, Protective Film, Black Spacer, Argon Filled, Traditional Glz Bd, Primed Wood SDL, 7/8" Putty SDL w/Perm Wood Putty Int BAR, Light Bronze Shadow Bar, Colonial All Lite(s) 3 Wide 2 High Top, 3 Wide 2 High Btm BetterVue Mesh Ivory Screen, This mull configuration complies with AAMA 450 standards and is professional engineer-approved. PEV 2024.1.0.4593/PDV 7.293 (03/03/24)NW	\$2,660.37	1	\$2,660.37
--------	--	---	------------	---	------------



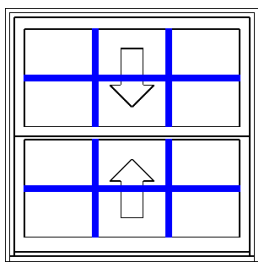
Viewed from Exterior. Scale: 1/2" = 1'

Line 5-1(A1)		Frame Size : 30 5/8 X 47 1/4 Sitaline Wood Double Hung, Auralast Pine, Primed Exterior, Primed Interior, No Exterior Trim, 4 9/16 Jamb, Standard Double Hung, White Jambliner, Concealed Jambliner White Hardware, US National-WDMA/ASTM, PG 35, Insulated SunResist Annealed Glass, Protective Film, Black Spacer, Argon Filled, Traditional Glz Bd,			
--------------	--	--	--	--	--

LINE	LOCATION SIZE INFO	BOOK CODE DESCRIPTION	NET UNIT PRICE	QTY	EXTENDED PRICE
		Primed Wood SDL, 7/8" Putty SDL w/Perm Wood Putty Int BAR, Light Bronze Shadow Bar, Colonial All Lite(s) 3 Wide 2 High Top, 3 Wide 2 High Btm, BetterVue Mesh Ivory Screen, *Custom-Width*, *Custom-Height*, IGThick=0.698(3/32 / 3/32), Clear Opening:26.8w, 20h, 3.7 sf U-Factor: 0.29, SHGC: 0.18, VLT: 0.42, Energy Rating: 13.00, CR: 60.00, CPD: JEL-N-885-01836-00001 PEV 2024.1.0.4593/PDV 7.293 (03/03/24)NW			

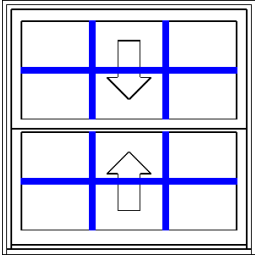
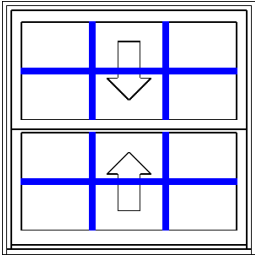
Line 5-2(A2)		Frame Size : 30 5/8 X 47 1/4 Sitrine Wood Double Hung, Auralast Pine, Primed Exterior, Primed Interior, No Exterior Trim, 4 9/16 Jamb, Standard Double Hung, White Jambliner, Concealed Jambliner White Hardware, US National-WDMA/ASTM, PG 35, Insulated SunResist Annealed Glass, Protective Film, Black Spacer, Argon Filled, Traditional Glz Bd, Primed Wood SDL, 7/8" Putty SDL w/Perm Wood Putty Int BAR, Light Bronze Shadow Bar, Colonial All Lite(s) 3 Wide 2 High Top, 3 Wide 2 High Btm, BetterVue Mesh Ivory Screen, *Custom-Width*, *Custom-Height*, IGThick=0.698(3/32 / 3/32), Clear Opening:26.8w, 20h, 3.7 sf U-Factor: 0.29, SHGC: 0.18, VLT: 0.42, Energy Rating: 13.00, CR: 60.00, CPD: JEL-N-885-01836-00001 PEV 2024.1.0.4593/PDV 7.293 (03/03/24)NW			
--------------	--	--	--	--	--

Line 6	1st - Hallway	Frame Size : 42 1/4 X 42 1/4 (Outside Casing Size: 49 7/8 X 46 15/16), Sitrine Wood Double Hung, Auralast Pine, Primed Exterior, Primed Interior, 4 1/2" Flat Casing, Standard Sill Nosing, DripCap, Ivory Drip Cap, 8 1/2 Jamb, 4/4 Thick, Standard Double Hung, White Jambliner, Concealed Jambliner White Hardware, US National-WDMA/ASTM, PG 35, Insulated SunResist Annealed Glass, Protective Film, Black Spacer, Argon Filled, Traditional Glz Bd, Primed Wood SDL, 7/8" Putty SDL w/Perm Wood Putty Int BAR, Light Bronze Shadow Bar, Colonial All Lite(s) 3 Wide 2 High Top, 3 Wide 2 High Btm, BetterVue Mesh Ivory Screen, *Custom-Width*, *Custom-Height*, IGThick=0.698(3/32 / 3/32), Clear Opening:38.5w, 17.5h, 4.6 sf U-Factor: 0.29, SHGC: 0.18, VLT: 0.42, Energy Rating: 13.00, CR: 60.00, CPD: JEL-N-885-01836-00001 PEV 2024.1.0.4593/PDV 7.293 (03/03/24)NW			
--------	---------------	--	--	--	--

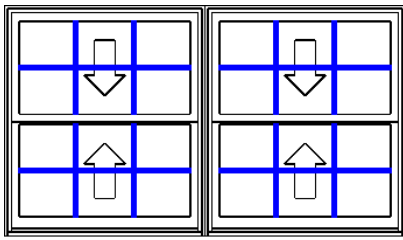


Viewed from Exterior. Scale: 1/2" = 1'

\$1,487.99 1 \$1,487.99

LINE	LOCATION SIZE INFO	BOOK CODE DESCRIPTION	NET UNIT PRICE	QTY	EXTENDED PRICE
Line 7	1st - Hallway Rough Opening : 43 X 43	Frame Size : 42 1/4 X 42 1/4 (Outside Casing Size: 49 7/8 X 46 15/16), Sitaline Wood Double Hung, Auralast Pine, Primed Exterior, Primed Interior, 4 1/2" Flat Casing, Standard Sill Nosing, DripCap, Ivory Drip Cap, 8 1/2 Jamb, 4/4 Thick, Standard Double Hung, White Jambliner, Concealed Jambliner White Hardware, US National-WDMA/ASTM, PG 35, Insulated SunResist Annealed Glass, Protective Film, Black Spacer, Argon Filled, Traditional Glz Bd, Primed Wood SDL, 7/8" Putty SDL w/Perm Wood Putty Int BAR, Light Bronze Shadow Bar, Colonial All Lite(s) 3 Wide 2 High Top, 3 Wide 2 High Btm, BetterVue Mesh Ivory Screen, *Custom-Width*, *Custom-Height*, IGThick=0.698(3/32 / 3/32), Clear Opening:38.5w, 17.5h, 4.6 sf U-Factor: 0.29, SHGC: 0.18, VLT: 0.42, Energy Rating: 13.00, CR: 60.00, CPD: JEL-N-885-01836-00001 PEV 2024.1.0.4593/PDV 7.293 (03/03/24)NW	\$1,487.99	1	\$1,487.99
		 <p>Viewed from Exterior. Scale: 1/2" =1'</p>			
Line 8	1st - Hallway Rough Opening : 43 X 43	Frame Size : 42 1/4 X 42 1/4 (Outside Casing Size: 49 7/8 X 46 15/16), Sitaline Wood Double Hung, Auralast Pine, Primed Exterior, Primed Interior, 4 1/2" Flat Casing, Standard Sill Nosing, DripCap, Ivory Drip Cap, 8 1/2 Jamb, 4/4 Thick, Standard Double Hung, White Jambliner, Concealed Jambliner White Hardware, US National-WDMA/ASTM, PG 35, Insulated SunResist Annealed Glass, Protective Film, Black Spacer, Argon Filled, Traditional Glz Bd, Primed Wood SDL, 7/8" Putty SDL w/Perm Wood Putty Int BAR, Light Bronze Shadow Bar, Colonial All Lite(s) 3 Wide 2 High Top, 3 Wide 2 High Btm, BetterVue Mesh Ivory Screen, *Custom-Width*, *Custom-Height*, IGThick=0.698(3/32 / 3/32), Clear Opening:38.5w, 17.5h, 4.6 sf U-Factor: 0.29, SHGC: 0.18, VLT: 0.42, Energy Rating: 13.00, CR: 60.00, CPD: JEL-N-885-01836-00001 PEV 2024.1.0.4593/PDV 7.293 (03/03/24)NW	\$1,487.99	1	\$1,487.99
		 <p>Viewed from Exterior. Scale: 1/2" =1'</p>			

LINE	LOCATION SIZE INFO	BOOK CODE DESCRIPTION	NET UNIT PRICE	QTY	EXTENDED PRICE
Line 9	2nd - Bedroom (Meets Egress) Rough Opening : 86 1/2 X 50	Frame Size : 85 3/4 X 49 1/4 (Outside Casing Size: 93 3/8 X 53 15/16), Siteline Wood Double Hung, Auralast Pine, 2 Wide Primed Exterior, Primed Interior, 4 1/2" Flat Casing, Standard Sill Nosing, DripCap, Ivory Drip Cap, 8 1/2 Jamb, 4/4 Thick, White Jambliner, Concealed Jambliner White Hardware, US National-WDMA/ASTM, DP 35, Insulated SunResist Annealed Glass, Protective Film, Black Spacer, Argon Filled, Traditional Glz Bd, Primed Wood SDL, 7/8" Putty SDL w/Perm Wood Putty Int BAR, Light Bronze Shadow Bar, Colonial All Lite(s) 3 Wide 2 High Top, 3 Wide 2 High Btm BetterVue Mesh Ivory Screen, This mull configuration complies with AAMA 450 standards and is professional engineer-approved. PEV 2024.1.0.4593/PDV 7.293 (03/03/24)NW	\$3,067.52	1	\$3,067.52



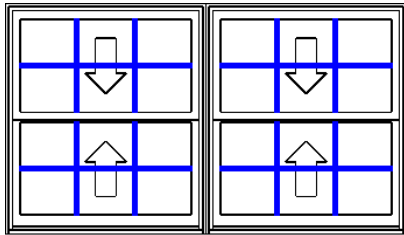
Viewed from Exterior.

Line 9-1(A1)	Frame Size : 42 7/8 X 49 1/4 Siteline Wood Double Hung, Auralast Pine, Primed Exterior, Primed Interior, No Exterior Trim, 4 9/16 Jamb, Standard Double Hung, White Jambliner, Concealed Jambliner White Hardware, US National-WDMA/ASTM, PG 35, Insulated SunResist Annealed Glass, Protective Film, Black Spacer, Argon Filled, Traditional Glz Bd, Primed Wood SDL, 7/8" Putty SDL w/Perm Wood Putty Int BAR, Light Bronze Shadow Bar, Colonial All Lite(s) 3 Wide 2 High Top, 3 Wide 2 High Btm, BetterVue Mesh Ivory Screen, *Custom-Width*, *Custom-Height*, IGThick=0.698(3/32 / 3/32), Clear Opening:39.1w, 21h, 5.7 sf U-Factor: 0.29, SHGC: 0.18, VLT: 0.42, Energy Rating: 13.00, CR: 60.00, CPD: JEL-N-885-01836-00001 PEV 2024.1.0.4593/PDV 7.293 (03/03/24)NW				
--------------	---	--	--	--	--

Line 9-2(A2)	Frame Size : 42 7/8 X 49 1/4 Siteline Wood Double Hung, Auralast Pine, Primed Exterior, Primed Interior, No Exterior Trim, 4 9/16 Jamb, Standard Double Hung, White Jambliner, Concealed Jambliner White Hardware, US National-WDMA/ASTM, PG 35, Insulated SunResist Annealed Glass, Protective Film, Black Spacer, Argon Filled, Traditional Glz Bd, Primed Wood SDL, 7/8" Putty SDL w/Perm Wood Putty Int BAR, Light				
--------------	--	--	--	--	--

LINE	LOCATION SIZE INFO	BOOK CODE DESCRIPTION	NET UNIT PRICE	QTY	EXTENDED PRICE
		Bronze Shadow Bar, Colonial All Lite(s) 3 Wide 2 High Top, 3 Wide 2 High Btm, BetterVue Mesh Ivory Screen, *Custom-Width*, *Custom-Height*, IGThick=0.698(3/32 / 3/32), Clear Opening:39.1w, 21h, 5.7 sf U-Factor: 0.29, SHGC: 0.18, VLT: 0.42, Energy Rating: 13.00, CR: 60.00, CPD: JEL-N-885-01836-00001 PEV 2024.1.0.4593/PDV 7.293 (03/03/24)NW			

Line 10 2nd - Bedroom (Meets Egress)
Rough Opening : 86 1/2 X 50



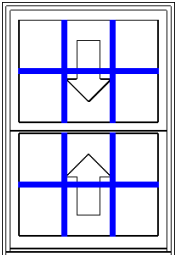
Viewed from Exterior.

Frame Size : 85 3/4 X 49 1/4
(Outside Casing Size: 93 3/8 X 53 15/16),
Siteline Wood Double Hung, Auralast Pine, 2 Wide
Primed Exterior,
Primed Interior,
4 1/2" Flat Casing, Standard Sill Nosing, DripCap, Ivory Drip Cap,
8 1/2 Jamb, 4/4 Thick,
White Jambliner, Concealed Jambliner
White Hardware,
US National-WDMA/ASTM, DP 35,
Insulated SunResist Annealed Glass, Protective Film, Black Spacer, Argon Filled, Traditional Glz Bd,
Primed Wood SDL, 7/8" Putty SDL w/Perm Wood Putty Int BAR, Light Bronze Shadow Bar, Colonial All Lite(s) 3 Wide 2 High Top, 3 Wide 2 High Btm
BetterVue Mesh Ivory Screen,
This mull configuration complies with AAMA 450 standards and is professional engineer-approved.
PEV 2024.1.0.4593/PDV 7.293 (03/03/24)NW

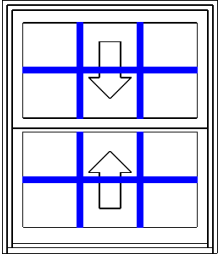
\$3,067.52 1 \$3,067.52

Line 10-1(A1)

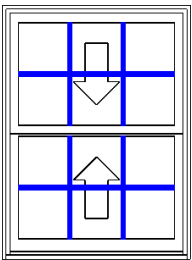
Frame Size : 42 7/8 X 49 1/4
Siteline Wood Double Hung, Auralast Pine,
Primed Exterior,
Primed Interior,
No Exterior Trim,
4 9/16 Jamb,
Standard Double Hung, White Jambliner, Concealed Jambliner
White Hardware,
US National-WDMA/ASTM, PG 35,
Insulated SunResist Annealed Glass, Protective Film, Black Spacer, Argon Filled, Traditional Glz Bd,
Primed Wood SDL, 7/8" Putty SDL w/Perm Wood Putty Int BAR, Light Bronze Shadow Bar, Colonial All Lite(s) 3 Wide 2 High Top, 3 Wide 2 High Btm,
BetterVue Mesh Ivory Screen,
Custom-Width, *Custom-Height*, IGThick=0.698(3/32 / 3/32), Clear
Opening:39.1w, 21h, 5.7 sf
U-Factor: 0.29, SHGC: 0.18, VLT: 0.42, Energy Rating: 13.00, CR: 60.00,
CPD: JEL-N-885-01836-00001
PEV 2024.1.0.4593/PDV 7.293 (03/03/24)NW

LINE	LOCATION SIZE INFO	BOOK CODE DESCRIPTION	NET UNIT PRICE	QTY	EXTENDED PRICE
Line 10-2(A2)		Frame Size : 42 7/8 X 49 1/4 Sitaline Wood Double Hung, Auralast Pine, Primed Exterior, Primed Interior, No Exterior Trim, 4 9/16 Jamb, Standard Double Hung, White Jambliner, Concealed Jambliner White Hardware, US National-WDMA/ASTM, PG 35, Insulated SunResist Annealed Glass, Protective Film, Black Spacer, Argon Filled, Traditional Glz Bd, Primed Wood SDL, 7/8" Putty SDL w/Perm Wood Putty Int BAR, Light Bronze Shadow Bar, Colonial All Lite(s) 3 Wide 2 High Top, 3 Wide 2 High Btm, BetterVue Mesh Ivory Screen, *Custom-Width*, *Custom-Height*, IGThick=0.698(3/32 / 3/32), Clear Opening:39.1w, 21h, 5.7 sf U-Factor: 0.29, SHGC: 0.18, VLT: 0.42, Energy Rating: 13.00, CR: 60.00, CPD: JEL-N-885-01836-00001 PEV 2024.1.0.4593/PDV 7.293 (03/03/24)NW			
Line 11	2nd - Kitchen Rough Opening : 34 X 50	Frame Size : 33 1/4 X 49 1/4 (Outside Casing Size: 40 7/8 X 53 15/16), Sitaline Wood Double Hung, Auralast Pine, Primed Exterior, Primed Interior, 4 1/2" Flat Casing, Standard Sill Nosing, DripCap, Ivory Drip Cap, 8 1/2 Jamb, 4/4 Thick, Standard Double Hung, White Jambliner, Concealed Jambliner White Hardware, US National-WDMA/ASTM, PG 35, Insulated SunResist Annealed Glass, Protective Film, Black Spacer, Argon Filled, Traditional Glz Bd, Primed Wood SDL, 7/8" Putty SDL w/Perm Wood Putty Int BAR, Light Bronze Shadow Bar, Colonial All Lite(s) 3 Wide 2 High Top, 3 Wide 2 High Btm, BetterVue Mesh Ivory Screen, *Custom-Width*, *Custom-Height*, IGThick=0.698(3/32 / 3/32), Clear Opening:29.5w, 21h, 4.3 sf U-Factor: 0.29, SHGC: 0.18, VLT: 0.42, Energy Rating: 13.00, CR: 60.00, CPD: JEL-N-885-01836-00001 PEV 2024.1.0.4593/PDV 7.293 (03/03/24)NW			
		 <p>Viewed from Exterior. Scale: 1/2" =1'</p>			
			\$1,432.49	1	\$1,432.49

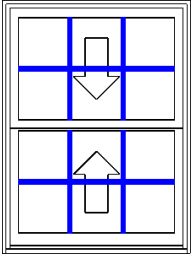
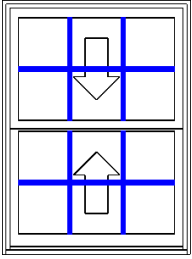
LINE	LOCATION SIZE INFO	BOOK CODE DESCRIPTION	NET UNIT PRICE	QTY	EXTENDED PRICE
Line 12	2nd - Kitchen Sink Rough Opening : 34 X 40	<p>Frame Size : 33 1/4 X 39 1/4 (Outside Casing Size: 40 7/8 X 43 15/16), Siteline Wood Double Hung, Auralast Pine, Primed Exterior, Primed Interior, 4 1/2" Flat Casing, Standard Sill Nosing, DripCap, Ivory Drip Cap, 8 1/2 Jamb, 4/4 Thick, Standard Double Hung, White Jambliner, Concealed Jambliner White Hardware, US National-WDMA/ASTM, PG 35, Insulated SunResist Annealed Glass, Protective Film, Black Spacer, Argon Filled, Traditional Glz Bd, Primed Wood SDL, 7/8" Putty SDL w/Perm Wood Putty Int BAR, Light Bronze Shadow Bar, Colonial All Lite(s) 3 Wide 2 High Top, 3 Wide 2 High Btm, BetterVue Mesh Ivory Screen, *Custom-Width*, *Custom-Height*, IGThick=0.698(3/32 / 3/32), Clear Opening:29.5w, 16h, 3.2 sf U-Factor: 0.29, SHGC: 0.18, VLT: 0.42, Energy Rating: 13.00, CR: 60.00, CPD: JEL-N-885-01836-00001 PEV 2024.1.0.4593/PDV 7.293 (03/03/24)NW</p>			
			\$1,317.90	1	\$1,317.90
Line 13	2nd - Hallway Rough Opening : 38 X 51	<p>Frame Size : 37 1/4 X 50 1/4 (Outside Casing Size: 44 7/8 X 54 15/16), Siteline Wood Double Hung, Auralast Pine, Primed Exterior, Primed Interior, 4 1/2" Flat Casing, Standard Sill Nosing, DripCap, Ivory Drip Cap, 8 1/2 Jamb, 4/4 Thick, Standard Double Hung, White Jambliner, Concealed Jambliner White Hardware, US National-WDMA/ASTM, PG 35, Insulated SunResist Annealed Glass, Protective Film, Black Spacer, Argon Filled, Traditional Glz Bd, Primed Wood SDL, 7/8" Putty SDL w/Perm Wood Putty Int BAR, Light Bronze Shadow Bar, Colonial All Lite(s) 3 Wide 2 High Top, 3 Wide 2 High Btm, BetterVue Mesh Ivory Screen, *Custom-Width*, *Custom-Height*, IGThick=0.698(3/32 / 3/32), Clear Opening:33.5w, 21.5h, 5 sf U-Factor: 0.29, SHGC: 0.18, VLT: 0.42, Energy Rating: 13.00, CR: 60.00, CPD: JEL-N-885-01836-00001 PEV 2024.1.0.4593/PDV 7.293 (03/03/24)NW</p>			
			\$1,482.21	1	\$1,482.21

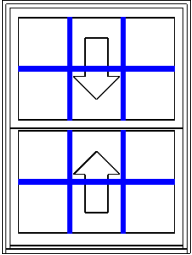
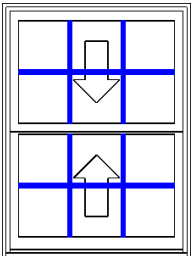


Viewed from Exterior. Scale: 1/2" =1'

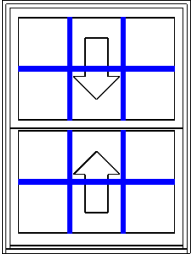


Viewed from Exterior. Scale: 1/2" =1'

LINE	LOCATION SIZE INFO	BOOK CODE DESCRIPTION	NET UNIT PRICE	QTY	EXTENDED PRICE
Line 14	2nd - Hallway Rough Opening : 38 X 51	 <p>Frame Size : 37 1/4 X 50 1/4 (Outside Casing Size: 44 7/8 X 54 15/16), Siteline Wood Double Hung, Auralast Pine, Primed Exterior, Primed Interior, 4 1/2" Flat Casing, Standard Sill Nosing, DripCap, Ivory Drip Cap, 8 1/2 Jamb, 4/4 Thick, Standard Double Hung, White Jambliner, Concealed Jambliner White Hardware, US National-WDMA/ASTM, PG 35, Insulated SunResist Annealed Glass, Protective Film, Black Spacer, Argon Filled, Traditional Glz Bd, Primed Wood SDL, 7/8" Putty SDL w/Perm Wood Putty Int BAR, Light Bronze Shadow Bar, Colonial All Lite(s) 3 Wide 2 High Top, 3 Wide 2 High Btm, BetterVue Mesh Ivory Screen, *Custom-Width*, *Custom-Height*, IGThick=0.698(3/32 / 3/32), Clear Opening:33.5w, 21.5h, 5 sf U-Factor: 0.29, SHGC: 0.18, VLT: 0.42, Energy Rating: 13.00, CR: 60.00, CPD: JEL-N-885-01836-00001 PEV 2024.1.0.4593/PDV 7.293 (03/03/24)NW</p>			
			\$1,482.21	1	\$1,482.21
Line 15	2nd - Hallway Rough Opening : 38 X 51	 <p>Frame Size : 37 1/4 X 50 1/4 (Outside Casing Size: 44 7/8 X 54 15/16), Siteline Wood Double Hung, Auralast Pine, Primed Exterior, Primed Interior, 4 1/2" Flat Casing, Standard Sill Nosing, DripCap, Ivory Drip Cap, 8 1/2 Jamb, 4/4 Thick, Standard Double Hung, White Jambliner, Concealed Jambliner White Hardware, US National-WDMA/ASTM, PG 35, Insulated SunResist Annealed Glass, Protective Film, Black Spacer, Argon Filled, Traditional Glz Bd, Primed Wood SDL, 7/8" Putty SDL w/Perm Wood Putty Int BAR, Light Bronze Shadow Bar, Colonial All Lite(s) 3 Wide 2 High Top, 3 Wide 2 High Btm, BetterVue Mesh Ivory Screen, *Custom-Width*, *Custom-Height*, IGThick=0.698(3/32 / 3/32), Clear Opening:33.5w, 21.5h, 5 sf U-Factor: 0.29, SHGC: 0.18, VLT: 0.42, Energy Rating: 13.00, CR: 60.00, CPD: JEL-N-885-01836-00001 PEV 2024.1.0.4593/PDV 7.293 (03/03/24)NW</p>			
			\$1,482.21	1	\$1,482.21

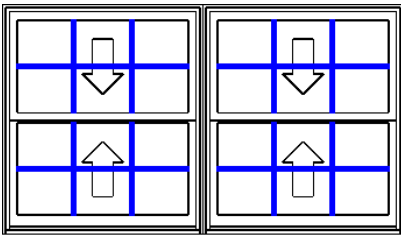
LINE	LOCATION SIZE INFO	BOOK CODE DESCRIPTION	NET UNIT PRICE	QTY	EXTENDED PRICE
Line 16	2nd - Hallway Rough Opening : 38 X 51	 <p>Frame Size : 37 1/4 X 50 1/4 (Outside Casing Size: 44 7/8 X 54 15/16), Siteline Wood Double Hung, Auralast Pine, Primed Exterior, Primed Interior, 4 1/2" Flat Casing, Standard Sill Nosing, DripCap, Ivory Drip Cap, 8 1/2 Jamb, 4/4 Thick, Standard Double Hung, White Jambliner, Concealed Jambliner White Hardware, US National-WDMA/ASTM, PG 35, Insulated SunResist Annealed Glass, Protective Film, Black Spacer, Argon Filled, Traditional Glz Bd, Primed Wood SDL, 7/8" Putty SDL w/Perm Wood Putty Int BAR, Light Bronze Shadow Bar, Colonial All Lite(s) 3 Wide 2 High Top, 3 Wide 2 High Btm, BetterVue Mesh Ivory Screen, *Custom-Width*, *Custom-Height*, IGThick=0.698(3/32 / 3/32), Clear Opening:33.5w, 21.5h, 5 sf U-Factor: 0.29, SHGC: 0.18, VLT: 0.42, Energy Rating: 13.00, CR: 60.00, CPD: JEL-N-885-01836-00001 PEV 2024.1.0.4593/PDV 7.293 (03/03/24)NW</p>			
			\$1,482.21	1	\$1,482.21
Line 17	2nd - Hallway Rough Opening : 38 X 51	 <p>Frame Size : 37 1/4 X 50 1/4 (Outside Casing Size: 44 7/8 X 54 15/16), Siteline Wood Double Hung, Auralast Pine, Primed Exterior, Primed Interior, 4 1/2" Flat Casing, Standard Sill Nosing, DripCap, Ivory Drip Cap, 8 1/2 Jamb, 4/4 Thick, Standard Double Hung, White Jambliner, Concealed Jambliner White Hardware, US National-WDMA/ASTM, PG 35, Insulated SunResist Annealed Glass, Protective Film, Black Spacer, Argon Filled, Traditional Glz Bd, Primed Wood SDL, 7/8" Putty SDL w/Perm Wood Putty Int BAR, Light Bronze Shadow Bar, Colonial All Lite(s) 3 Wide 2 High Top, 3 Wide 2 High Btm, BetterVue Mesh Ivory Screen, *Custom-Width*, *Custom-Height*, IGThick=0.698(3/32 / 3/32), Clear Opening:33.5w, 21.5h, 5 sf U-Factor: 0.29, SHGC: 0.18, VLT: 0.42, Energy Rating: 13.00, CR: 60.00, CPD: JEL-N-885-01836-00001 PEV 2024.1.0.4593/PDV 7.293 (03/03/24)NW</p>			
			\$1,482.21	1	\$1,482.21

LINE	LOCATION SIZE INFO	BOOK CODE DESCRIPTION	NET UNIT PRICE	QTY	EXTENDED PRICE
Line 18	2nd - Hallway Rough Opening : 38 X 51	Frame Size : 37 1/4 X 50 1/4 (Outside Casing Size: 44 7/8 X 54 15/16), Sitaline Wood Double Hung, Auralast Pine, Primed Exterior, Primed Interior, 4 1/2" Flat Casing, Standard Sill Nosing, DripCap, Ivory Drip Cap, 8 1/2 Jamb, 4/4 Thick, Standard Double Hung, White Jambliner, Concealed Jambliner White Hardware, US National-WDMA/ASTM, PG 35, Insulated SunResist Annealed Glass, Protective Film, Black Spacer, Argon Filled, Traditional Glz Bd, Primed Wood SDL, 7/8" Putty SDL w/Perm Wood Putty Int BAR, Light Bronze Shadow Bar, Colonial All Lite(s) 3 Wide 2 High Top, 3 Wide 2 High Btm, BetterVue Mesh Ivory Screen, *Custom-Width*, *Custom-Height*, IGThick=0.698(3/32 / 3/32), Clear Opening:33.5w, 21.5h, 5 sf U-Factor: 0.29, SHGC: 0.18, VLT: 0.42, Energy Rating: 13.00, CR: 60.00, CPD: JEL-N-885-01836-00001 PEV 2024.1.0.4593/PDV 7.293 (03/03/24)NW	\$1,482.21	1	\$1,482.21



Viewed from Exterior. Scale: 1/2" = 1'

Line 19	3rd - Bedroom (Meets Egress) Rough Opening : 86 1/2 X 50	Frame Size : 85 3/4 X 49 1/4 (Outside Casing Size: 93 3/8 X 53 15/16), Sitaline Wood Double Hung, Auralast Pine, 2 Wide Primed Exterior, Primed Interior, 4 1/2" Flat Casing, Standard Sill Nosing, DripCap, Ivory Drip Cap, 8 1/2 Jamb, 4/4 Thick, White Jambliner, Concealed Jambliner White Hardware, US National-WDMA/ASTM, DP 35, Insulated SunResist Annealed Glass, Protective Film, Black Spacer, Argon Filled, Traditional Glz Bd, Primed Wood SDL, 7/8" Putty SDL w/Perm Wood Putty Int BAR, Light Bronze Shadow Bar, Colonial All Lite(s) 3 Wide 2 High Top, 3 Wide 2 High Btm BetterVue Mesh Ivory Screen, This mull configuration complies with AAMA 450 standards and is professional engineer-approved. PEV 2024.1.0.4593/PDV 7.293 (03/03/24)NW	\$3,067.52	1	\$3,067.52
---------	--	---	------------	---	------------



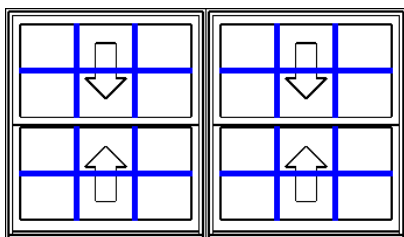
Viewed from Exterior.

Line 19-1(A1)		Frame Size : 42 7/8 X 49 1/4 Sitaline Wood Double Hung, Auralast Pine, Primed Exterior, Primed Interior, No Exterior Trim, 4 9/16 Jamb, Standard Double Hung, White Jambliner, Concealed Jambliner White Hardware, US National-WDMA/ASTM, PG 35, Insulated SunResist Annealed Glass, Protective Film, Black Spacer, Argon Filled, Traditional Glz Bd,			
---------------	--	---	--	--	--

LINE	LOCATION SIZE INFO	BOOK CODE DESCRIPTION	NET UNIT PRICE	QTY	EXTENDED PRICE
		Primed Wood SDL, 7/8" Putty SDL w/Perm Wood Putty Int BAR, Light Bronze Shadow Bar, Colonial All Lite(s) 3 Wide 2 High Top, 3 Wide 2 High Btm, BetterVue Mesh Ivory Screen, *Custom-Width*, *Custom-Height*, IGThick=0.698(3/32 / 3/32), Clear Opening:39.1w, 21h, 5.7 sf U-Factor: 0.29, SHGC: 0.18, VLT: 0.42, Energy Rating: 13.00, CR: 60.00, CPD: JEL-N-885-01836-00001 PEV 2024.1.0.4593/PDV 7.293 (03/03/24)NW			

Line 19-2(A2)		Frame Size : 42 7/8 X 49 1/4 Sitrine Wood Double Hung, Auralast Pine, Primed Exterior, Primed Interior, No Exterior Trim, 4 9/16 Jamb, Standard Double Hung, White Jambliner, Concealed Jambliner White Hardware, US National-WDMA/ASTM, PG 35, Insulated SunResist Annealed Glass, Protective Film, Black Spacer, Argon Filled, Traditional Glz Bd, Primed Wood SDL, 7/8" Putty SDL w/Perm Wood Putty Int BAR, Light Bronze Shadow Bar, Colonial All Lite(s) 3 Wide 2 High Top, 3 Wide 2 High Btm, BetterVue Mesh Ivory Screen, *Custom-Width*, *Custom-Height*, IGThick=0.698(3/32 / 3/32), Clear Opening:39.1w, 21h, 5.7 sf U-Factor: 0.29, SHGC: 0.18, VLT: 0.42, Energy Rating: 13.00, CR: 60.00, CPD: JEL-N-885-01836-00001 PEV 2024.1.0.4593/PDV 7.293 (03/03/24)NW			
---------------	--	--	--	--	--

Line 20 3rd - Bedroom (Meets Egress)
 Rough Opening : 86 1/2 X 50



Viewed from Exterior.

		Frame Size : 85 3/4 X 49 1/4 (Outside Casing Size: 93 3/8 X 53 15/16), Sitrine Wood Double Hung, Auralast Pine, 2 Wide Primed Exterior, Primed Interior, 4 1/2" Flat Casing, Standard Sill Nosing, DripCap, Ivory Drip Cap, 8 1/2 Jamb, 4/4 Thick, White Jambliner, Concealed Jambliner White Hardware, US National-WDMA/ASTM, DP 35, Insulated SunResist Annealed Glass, Protective Film, Black Spacer, Argon Filled, Traditional Glz Bd, Primed Wood SDL, 7/8" Putty SDL w/Perm Wood Putty Int BAR, Light Bronze Shadow Bar, Colonial All Lite(s) 3 Wide 2 High Top, 3 Wide 2 High Btm BetterVue Mesh Ivory Screen, This mull configuration complies with AAMA 450 standards and is professional engineer-approved. PEV 2024.1.0.4593/PDV 7.293 (03/03/24)NW			
			\$3,067.52	1	\$3,067.52

LINE	LOCATION SIZE INFO	BOOK CODE DESCRIPTION	NET UNIT PRICE	QTY	EXTENDED PRICE
------	-----------------------	--------------------------	-------------------	-----	-------------------

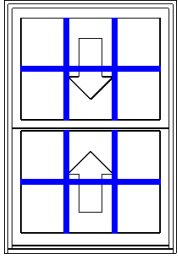
Line 20-1(A1)

Frame Size : 42 7/8 X 49 1/4
 Sitrine Wood Double Hung, Auralast Pine,
 Primed Exterior,
 Primed Interior,
 No Exterior Trim,
 4 9/16 Jamb,
 Standard Double Hung, White Jambliner, Concealed Jambliner
 White Hardware,
 US National-WDMA/ASTM, PG 35,
 Insulated SunResist Annealed Glass, Protective Film, Black Spacer, Argon
 Filled, Traditional Glz Bd,
 Primed Wood SDL, 7/8" Putty SDL w/Perm Wood Putty Int BAR, Light
 Bronze Shadow Bar, Colonial All Lite(s) 3 Wide 2 High Top, 3 Wide 2 High
 Btm,
 BetterVue Mesh Ivory Screen,
 Custom-Width, *Custom-Height*, IGThick=0.698(3/32 / 3/32), Clear
 Opening:39.1w, 21h, 5.7 sf
 U-Factor: 0.29, SHGC: 0.18, VLT: 0.42, Energy Rating: 13.00, CR: 60.00,
 CPD: JEL-N-885-01836-00001
 PEV 2024.1.0.4593/PDV 7.293 (03/03/24)NW

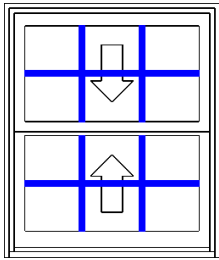
Line 20-2(A2)

Frame Size : 42 7/8 X 49 1/4
 Sitrine Wood Double Hung, Auralast Pine,
 Primed Exterior,
 Primed Interior,
 No Exterior Trim,
 4 9/16 Jamb,
 Standard Double Hung, White Jambliner, Concealed Jambliner
 White Hardware,
 US National-WDMA/ASTM, PG 35,
 Insulated SunResist Annealed Glass, Protective Film, Black Spacer, Argon
 Filled, Traditional Glz Bd,
 Primed Wood SDL, 7/8" Putty SDL w/Perm Wood Putty Int BAR, Light
 Bronze Shadow Bar, Colonial All Lite(s) 3 Wide 2 High Top, 3 Wide 2 High
 Btm,
 BetterVue Mesh Ivory Screen,
 Custom-Width, *Custom-Height*, IGThick=0.698(3/32 / 3/32), Clear
 Opening:39.1w, 21h, 5.7 sf
 U-Factor: 0.29, SHGC: 0.18, VLT: 0.42, Energy Rating: 13.00, CR: 60.00,
 CPD: JEL-N-885-01836-00001
 PEV 2024.1.0.4593/PDV 7.293 (03/03/24)NW

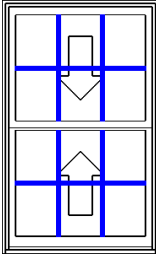
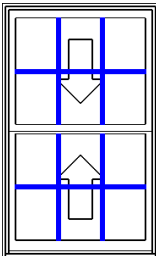
LINE	LOCATION SIZE INFO	BOOK CODE DESCRIPTION	NET UNIT PRICE	QTY	EXTENDED PRICE
Line 21	3rd - Kitchen Rough Opening : 34 X 50	<p>Frame Size : 33 1/4 X 49 1/4 (Outside Casing Size: 40 7/8 X 53 15/16), Siteline Wood Double Hung, Auralast Pine, Primed Exterior, Primed Interior, 4 1/2" Flat Casing, Standard Sill Nosing, DripCap, Ivory Drip Cap, 8 1/2 Jamb, 4/4 Thick, Standard Double Hung, White Jambliner, Concealed Jambliner White Hardware, US National-WDMA/ASTM, PG 35, Insulated SunResist Annealed Glass, Protective Film, Black Spacer, Argon Filled, Traditional Glz Bd, Primed Wood SDL, 7/8" Putty SDL w/Perm Wood Putty Int BAR, Light Bronze Shadow Bar, Colonial All Lite(s) 3 Wide 2 High Top, 3 Wide 2 High Btm, BetterVue Mesh Ivory Screen, *Custom-Width*, *Custom-Height*, IGThick=0.698(3/32 / 3/32), Clear Opening:29.5w, 21h, 4.3 sf U-Factor: 0.29, SHGC: 0.18, VLT: 0.42, Energy Rating: 13.00, CR: 60.00, CPD: JEL-N-885-01836-00001 PEV 2024.1.0.4593/PDV 7.293 (03/03/24)NW</p>			
			\$1,432.49	1	\$1,432.49
Line 22	3rd - Kitchen Sink Rough Opening : 34 X 40	<p>Frame Size : 33 1/4 X 39 1/4 (Outside Casing Size: 40 7/8 X 43 15/16), Siteline Wood Double Hung, Auralast Pine, Primed Exterior, Primed Interior, 4 1/2" Flat Casing, Standard Sill Nosing, DripCap, Ivory Drip Cap, 8 1/2 Jamb, 4/4 Thick, Standard Double Hung, White Jambliner, Concealed Jambliner White Hardware, US National-WDMA/ASTM, PG 35, Insulated SunResist Annealed Glass, Protective Film, Black Spacer, Argon Filled, Traditional Glz Bd, Primed Wood SDL, 7/8" Putty SDL w/Perm Wood Putty Int BAR, Light Bronze Shadow Bar, Colonial All Lite(s) 3 Wide 2 High Top, 3 Wide 2 High Btm, BetterVue Mesh Ivory Screen, *Custom-Width*, *Custom-Height*, IGThick=0.698(3/32 / 3/32), Clear Opening:29.5w, 16h, 3.2 sf U-Factor: 0.29, SHGC: 0.18, VLT: 0.42, Energy Rating: 13.00, CR: 60.00, CPD: JEL-N-885-01836-00001 PEV 2024.1.0.4593/PDV 7.293 (03/03/24)NW</p>			
			\$1,317.90	1	\$1,317.90



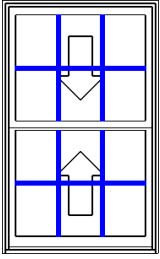
Viewed from Exterior. Scale: 1/2" =1'



Viewed from Exterior. Scale: 1/2" =1'

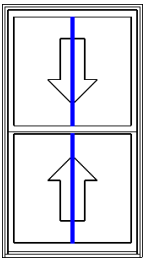
LINE	LOCATION SIZE INFO	BOOK CODE DESCRIPTION	NET UNIT PRICE	QTY	EXTENDED PRICE
Line 23	3rd - Hallway Rough Opening : 38 X 61	 <p>Frame Size : 37 1/4 X 60 1/4 (Outside Casing Size: 44 7/8 X 64 15/16), Siteline Wood Double Hung, Auralast Pine, Primed Exterior, Primed Interior, 4 1/2" Flat Casing, Standard Sill Nosing, DripCap, Ivory Drip Cap, 8 1/2 Jamb, 4/4 Thick, Standard Double Hung, White Jambliner, Concealed Jambliner White Hardware, US National-WDMA/ASTM, PG 35, Insulated SunResist Annealed Glass, Protective Film, Black Spacer, Argon Filled, Traditional Glz Bd, Primed Wood SDL, 7/8" Putty SDL w/Perm Wood Putty Int BAR, Light Bronze Shadow Bar, Colonial All Lite(s) 3 Wide 2 High Top, 3 Wide 2 High Btm, BetterVue Mesh Ivory Screen, *Custom-Width*, *Custom-Height*, IGThick=0.698(3/32 / 3/32), Clear Opening:33.5w, 26.5h, 6.1 sf U-Factor: 0.29, SHGC: 0.18, VLT: 0.42, Energy Rating: 13.00, CR: 60.00, CPD: JEL-N-885-01836-00001 PEV 2024.1.0.4593/PDV 7.293 (03/03/24)NW</p>	\$1,603.12	1	\$1,603.12
Line 24	3rd - Hallway Rough Opening : 38 X 61	 <p>Frame Size : 37 1/4 X 60 1/4 (Outside Casing Size: 44 7/8 X 64 15/16), Siteline Wood Double Hung, Auralast Pine, Primed Exterior, Primed Interior, 4 1/2" Flat Casing, Standard Sill Nosing, DripCap, Ivory Drip Cap, 8 1/2 Jamb, 4/4 Thick, Standard Double Hung, White Jambliner, Concealed Jambliner White Hardware, US National-WDMA/ASTM, PG 35, Insulated SunResist Annealed Glass, Protective Film, Black Spacer, Argon Filled, Traditional Glz Bd, Primed Wood SDL, 7/8" Putty SDL w/Perm Wood Putty Int BAR, Light Bronze Shadow Bar, Colonial All Lite(s) 3 Wide 2 High Top, 3 Wide 2 High Btm, BetterVue Mesh Ivory Screen, *Custom-Width*, *Custom-Height*, IGThick=0.698(3/32 / 3/32), Clear Opening:33.5w, 26.5h, 6.1 sf U-Factor: 0.29, SHGC: 0.18, VLT: 0.42, Energy Rating: 13.00, CR: 60.00, CPD: JEL-N-885-01836-00001 PEV 2024.1.0.4593/PDV 7.293 (03/03/24)NW</p>	\$1,603.12	1	\$1,603.12

LINE	LOCATION SIZE INFO	BOOK CODE DESCRIPTION	NET UNIT PRICE	QTY	EXTENDED PRICE
Line 25	3rd - Hallway Rough Opening : 38 X 61	Frame Size : 37 1/4 X 60 1/4 (Outside Casing Size: 44 7/8 X 64 15/16), Sitaline Wood Double Hung, Auralast Pine, Primed Exterior, Primed Interior, 4 1/2" Flat Casing, Standard Sill Nosing, DripCap, Ivory Drip Cap, 8 1/2 Jamb, 4/4 Thick, Standard Double Hung, White Jambliner, Concealed Jambliner White Hardware, US National-WDMA/ASTM, PG 35, Insulated SunResist Annealed Glass, Protective Film, Black Spacer, Argon Filled, Traditional Glz Bd, Primed Wood SDL, 7/8" Putty SDL w/Perm Wood Putty Int BAR, Light Bronze Shadow Bar, Colonial All Lite(s) 3 Wide 2 High Top, 3 Wide 2 High Btm, BetterVue Mesh Ivory Screen, *Custom-Width*, *Custom-Height*, IGThick=0.698(3/32 / 3/32), Clear Opening:33.5w, 26.5h, 6.1 sf U-Factor: 0.29, SHGC: 0.18, VLT: 0.42, Energy Rating: 13.00, CR: 60.00, CPD: JEL-N-885-01836-00001 PEV 2024.1.0.4593/PDV 7.293 (03/03/24)NW	\$1,603.12	1	\$1,603.12



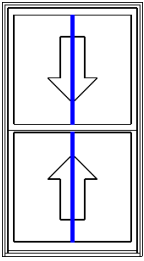
Viewed from Exterior. Scale: 1/2" = 1'

Line 26	3rd - Bedroom (Meets Egress) Rough Opening : 39 X 70	Frame Size : 38 1/4 X 69 1/4 (Outside Casing Size: 45 7/8 X 73 15/16), Sitaline Wood Double Hung, Auralast Pine, Primed Exterior, Primed Interior, 4 1/2" Flat Casing, Standard Sill Nosing, DripCap, Ivory Drip Cap, 8 1/2 Jamb, 4/4 Thick, Standard Double Hung, White Jambliner, Concealed Jambliner White Hardware, US National-WDMA/ASTM, PG 35, Insulated SunResist Annealed Glass, Protective Film, Black Spacer, Argon Filled, Traditional Glz Bd, Primed Wood SDL, 7/8" Putty SDL w/Perm Wood Putty Int BAR, Light Bronze Shadow Bar, Colonial All Lite(s) 2 Wide 1 High Top, 2 Wide 1 High Btm, BetterVue Mesh Ivory Screen, *Custom-Width*, *Custom-Height*, IGThick=0.698(3/32 / 3/32), Clear Opening:34.5w, 31h, 7.4 sf U-Factor: 0.29, SHGC: 0.18, VLT: 0.42, Energy Rating: 13.00, CR: 60.00, CPD: JEL-N-885-01836-00001 PEV 2024.1.0.4593/PDV 7.293 (03/03/24)NW	\$1,559.19	1	\$1,559.19
---------	--	--	------------	---	------------




Viewed from Exterior.

LINE	LOCATION SIZE INFO	BOOK CODE DESCRIPTION	NET UNIT PRICE	QTY	EXTENDED PRICE
Line 27	3rd - Bedroom (Meets Egress) Rough Opening : 39 X 70	Frame Size : 38 1/4 X 69 1/4 (Outside Casing Size: 45 7/8 X 73 15/16), Siteline Wood Double Hung, Auralast Pine, Primed Exterior, Primed Interior, 4 1/2" Flat Casing, Standard Sill Nosing, DripCap, Ivory Drip Cap, 8 1/2 Jamb, 4/4 Thick, Standard Double Hung, White Jambliner, Concealed Jambliner White Hardware, US National-WDMA/ASTM, PG 35, Insulated SunResist Annealed Glass, Protective Film, Black Spacer, Argon Filled, Traditional Glz Bd, Primed Wood SDL, 7/8" Putty SDL w/Perm Wood Putty Int BAR, Light Bronze Shadow Bar, Colonial All Lite(s) 2 Wide 1 High Top, 2 Wide 1 High Btm, BetterVue Mesh Ivory Screen, *Custom-Width*, *Custom-Height*, IGThick=0.698(3/32 / 3/32), Clear Opening:34.5w, 31h, 7.4 sf U-Factor: 0.29, SHGC: 0.18, VLT: 0.42, Energy Rating: 13.00, CR: 60.00, CPD: JEL-N-885-01836-00001 PEV 2024.1.0.4593/PDV 7.293 (03/03/24)NW	\$1,559.19	1	\$1,559.19



Viewed from Exterior.

Total:	\$47,904.12
MD Sales Tax (6.0000%):	\$2,874.25
Net Total:	\$50,778.37
Total Units:	27

 Protect yourself when you choose JELD-WEN AuraLast pine products backed by a limited lifetime warranty against wood rot and termite damage.

Note: Payment requirements - for Builders with an credit account set up with TNT Services Group payment is required NET 30. For persons without a credit account set up the required payment schedule is: 50% down prior to releasing order into production 40% due prior to installation/delivery. 10% due after screens and hardware have been installed. * If project is delivery only 50% is required prior to delivery. Pre-finished interior disclaimer – interior pre-finished products will be subjected to construction trades, dust and debris during the construction process. It is highly recommended the windows be, at a minimum, covered with plastic to mitigate the dust accumulated on the painted surface. Additionally, as you have requested to have a factory finish installed so early in the build process it should be expected some damage will occur from trades (such as dings and scratches) and it is not a defect of the window or a cause of TNT Services Group. If any window part has been damaged during the construction process, TNT will advise of the best course of action to remedy and any action (repair or replacement) would be chargeable by TNT Services Group. Furthermore, as you would be purchasing a factory wood painted part it should be made known that as wood has variations and the appearance of a raised grain or other natural variation in the wood grain may be enhanced by the interior finish and is not a defect (variations and grain raise would be more noticeable on darker finishes such as black or bronze). Interior finish is applied prior to assembly and is not intended to cover joinery seams. I have read, understand and approve the specifications detailed above for order:

Approved: _____ Date: _____