



HISTORIC PRESERVATION COMMISSION

Marc Elrich
County Executive

Karen Burditt
Chair

December 12, 2025

MEMORANDUM

TO: Rabbiah Sabbakhan
Department of Permitting Services

FROM: Laura DiPasquale
Historic Preservation Section
Maryland-National Capital Park & Planning Commission

SUBJECT: Historic Area Work Permit #1131132 RETROACTIVE– Window and door restoration, fenestration alterations, and shutter installation

The Montgomery County Historic Preservation Commission (HPC) has reviewed the attached applications for a Historic Area Work Permit (HAWP). This application was **approved with two (2) conditions** at the December 3, 2025 HPC meeting:

1. The applicant must submit shop drawings showing the installation method of the windows in section and plan within the openings, including the siding and new trim. The sill height and projection must match that of the historic windows.
2. The applicant must arrange an on-site pre-construction meeting with Historic Preservation Division staff and the window installers.

The HPC staff has reviewed and stamped the attached submission materials.

THE BUILDING PERMIT FOR THIS PROJECT SHALL BE ISSUED CONDITIONAL UPON ADHERENCE TO THE ABOVE APPROVED HAWP CONDITIONS AND MAY REQUIRE APPROVAL BY DPS OR ANOTHER LOCAL OFFICE BEFORE WORK CAN BEGIN.

Applicant: Inglesia Evangelica Cristo Promesa Inc. c/o Pastor Juan Arias; Husam Albattrawi, Architect
Address: 17017 Georgia Avenue, Olney

This HAWP approval is subject to the general condition that the applicant will obtain all other applicable Montgomery County or local government agency permits. After the issuance of these permits, the applicant must contact this Historic Preservation Office if any changes to the approved plan are made. Once work is complete, the applicant will contact Laura DiPasquale at 301-495-2167 or laura.dipasquale@montgomeryplanning.org to schedule a follow-up site visit.



Description of Property: Please describe the building and surrounding environment. Include information on significant structures, landscape features, or other significant features of the property:

Description of Work Proposed: Please give an overview of the work to be undertaken:

REVIEWED

By Laura DiPasquale at 2:19 pm, Dec 12, 2025

APPROVED

Montgomery County

Historic Preservation Commission

Karen Benoit

Work Item 1: _____

Description of Current Condition:

Proposed Work:

Work Item 2: _____

Description of Current Condition:

Proposed Work:

REVIEWED

By Laura DiPasquale at 2:19 pm, Dec 12, 2025

APPROVED

Montgomery County

Historic Preservation Commission

Karen Benoit

Work Item 3: _____

Description of Current Condition:

Proposed Work:



REVIEWED

By Laura DiPasquale at 2:19 pm, Dec 12, 2025

SEE FLOOR PLANS FOR WINDOW
OPENING TO REMAIN AND INFILL
WINDOW TO BE RESTORED

① HISTORIC VIEWS

APPROVED

Montgomery County

Historic Preservation Commission

Karen Benoit

HISTORIC
VIEWS

SHEET

A 4.0

06/08/2025

BATHAULT
DESIGN BUILD

TEL: (443) 841-8920

REVISIONS

17017 GEORGIA AVE
WINDOW REPLACEMENT
17017 GEORGIA AVE.
OLNEY, MD 20832



Restore original window

replace windows in existing openings



Replace with wood window

replace with wood window

Restore original window

replace with wood window

Restore original window

Restore to original wood window

REVIEWED

By Laura DiPasquale at 2:19 pm, Dec 12, 2025

APPROVED

Montgomery County

Historic Preservation Commission

Karen Buelit



REVIEWED

By Laura DiPasquale at 2:19 pm, Dec 12, 2025

APPROVED

Montgomery County

Historic Preservation Commission

Karen Benoit



Restore to original wood window

remove door.
restore original window

remove window,
restore original door



remove door;
restore original window

REVIEWED

By Laura DiPasquale at 2:19 pm, Dec 12, 2025

APPROVED

Montgomery County

Historic Preservation Commission

Karen B. Smith

REVIEWED

By Laura DiPasquale at 2:19 pm, Dec 12, 2025

APPROVED

Montgomery County

Historic Preservation Commission

Karen Benoit

BATHURST
DESIGN BUILD

TEL: (443) 841-8920

REVISIONS

17017 GEORGIA AVE
WINDOWS REPLACEMENT
17017 GEORGIA AVE.
OLNEY, MD 20832

FIRST FLOOR
PLAN

SHEET

A001

12/11/2025

EXISTING FRONT PORCH

EXISTING FIRST FLOOR

REMOVE EXISTING
DOOR

TO REPLACE
EXISTING DOOR

DOOR 1
TO REPLACE
EXISTING WINDOW

EXISTING
CONCRETE STEPS

UP

SCOPE OF WORK KEY NOTES:

- ① REMOVE EXISTING VINYL WINDOW. INSTALL NEW WINDOW AS PER WINDOW SCHEDULE.
- ② RESTORE WINDOW OPENING. INSTALL NEW WINDOW AS PER WINDOW SCHEDULE.
- ③ REMOVE DOOR. PREPARE FOR A NEW WINDOW OPENING TO MATCH EXISTING INFILL WINDOW.
- ④ REMOVE WINDOW. PREPARE FOR A NEW DOOR OPENING TO MATCH PREVIOUS INFILL DOOR. PREPARE TO INSTALL NEW DOOR AS PER DOOR SCHEDULE.
- ⑤ INSTALL NEW WINDOW WOOD SHUTTERS TO MATCH PREVIOUS REMOVED SHUTTERS. USE REAL SHUTTER HARDWARE.
- ⑥ EXISTING TO REMAIN

SEE WINDOWS CUTSHHETS AND SPECS IN ATTACHMENT NO.1
SEE WINDOWS CROSS SECTIONS IN ATTACHMENT NO.2

① **FIRST FLOOR PLAN**

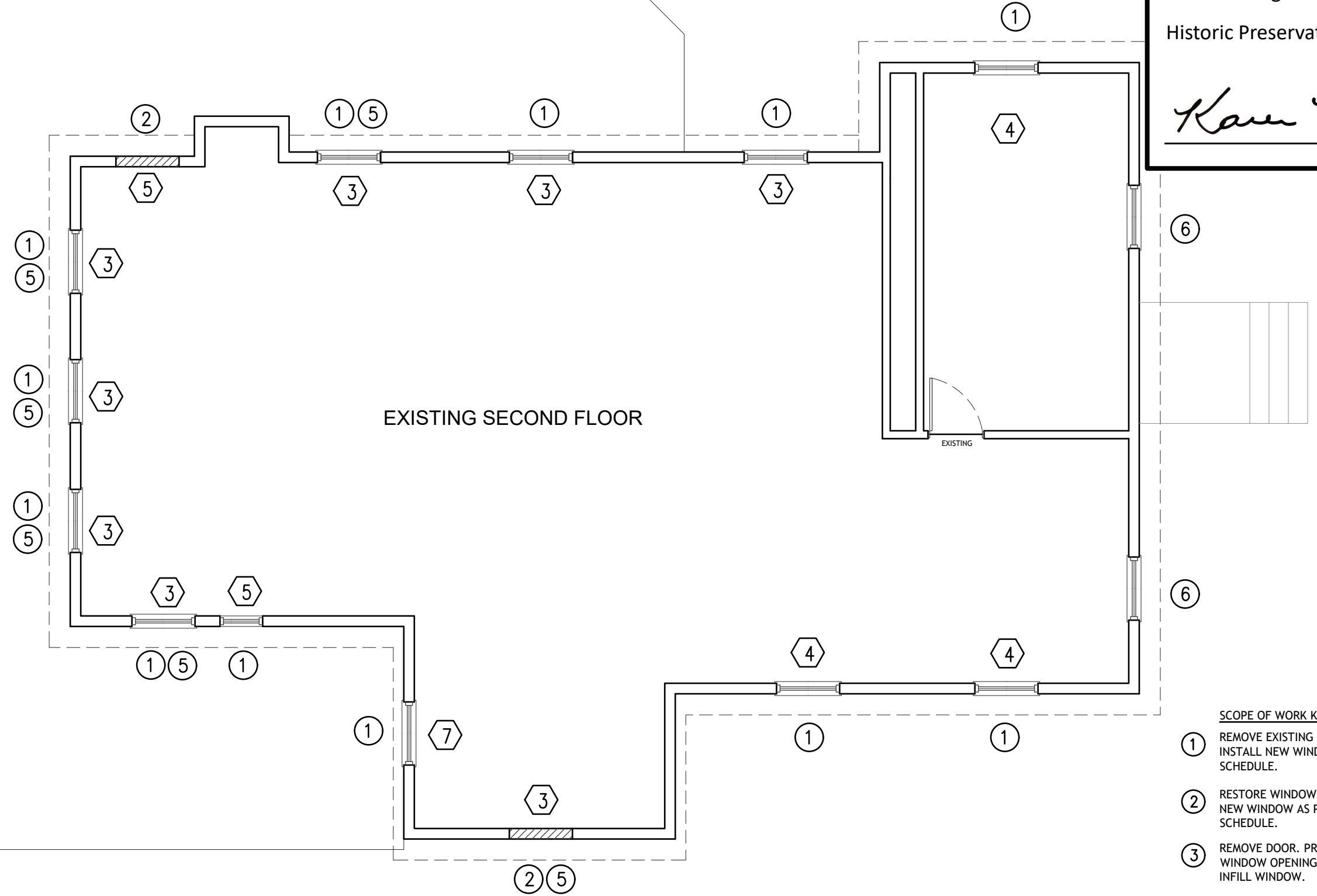
SCALE: 3/16"=1'-0"

REVIEWED
By Laura DiPasquale at 2:19 pm, Dec 12, 2025

APPROVED
Montgomery County
Historic Preservation Commission
Karen Benoit

BATHWELL
DESIGN BUILD
TEL: (443) 841-8920

EXISTING FRONT PORCH ROOF BELOW



EXISTING SECOND FLOOR

REVISIONS

17017 GEORGIA AVE
WINDOWS REPLACEMENT
17017 GEORGIA AVE.
OLNEY, MD 20832

SECOND
FLOOR PLAN

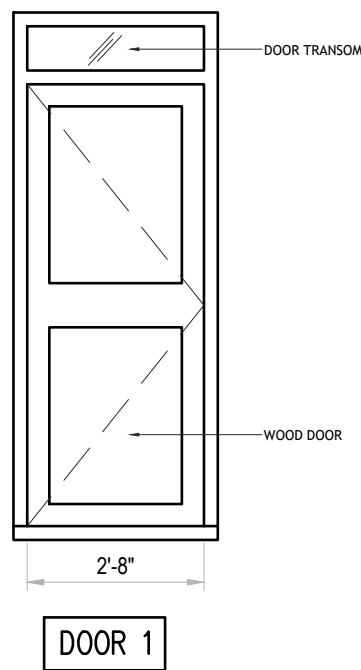
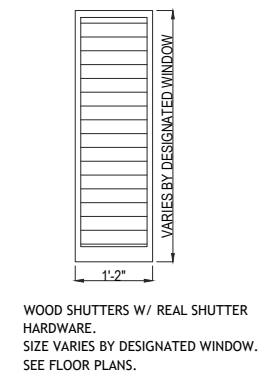
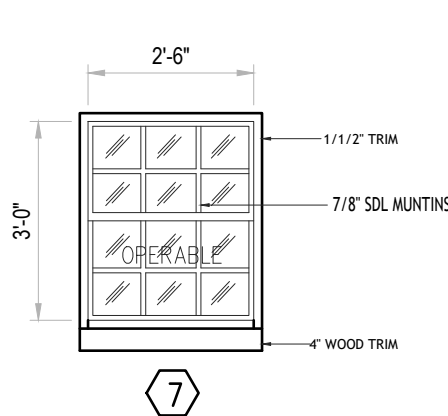
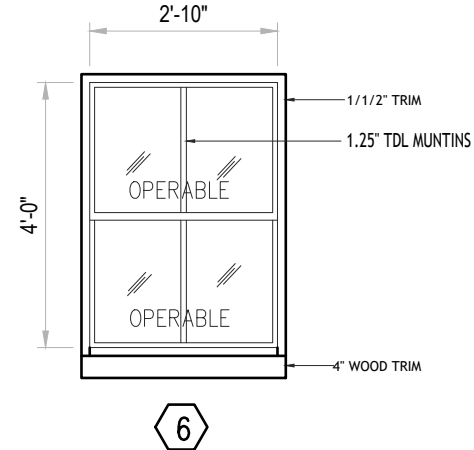
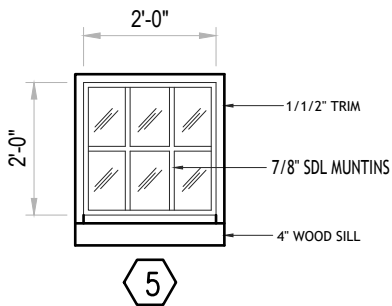
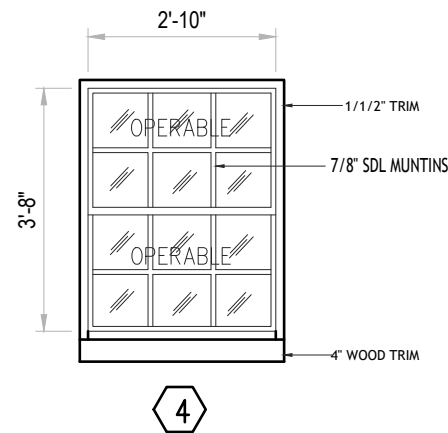
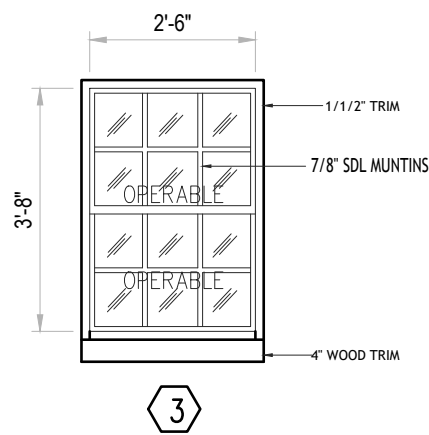
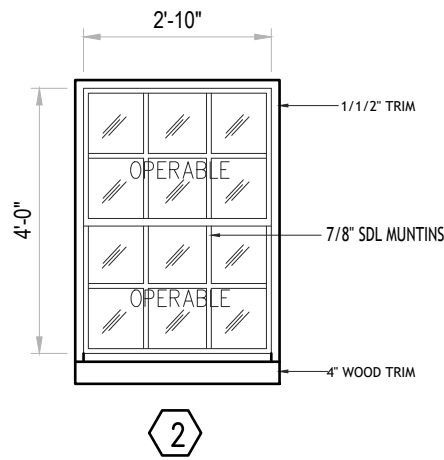
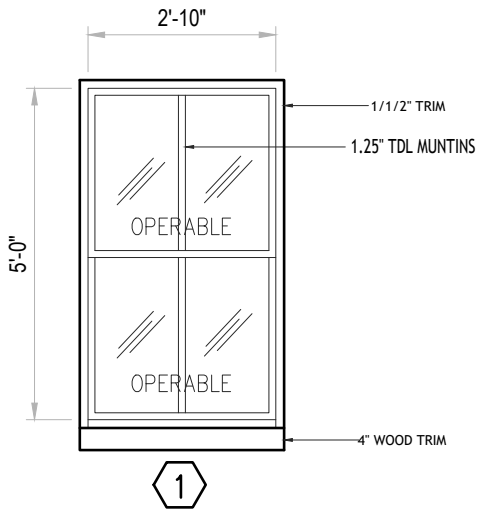
SHEET
A002

12/11/2025

- SCOPE OF WORK KEY NOTES:
- ① REMOVE EXISTING VINYL WINDOW. INSTALL NEW WINDOW AS PER WINDOW SCHEDULE.
 - ② RESTORE WINDOW OPENING. INSTALL NEW WINDOW AS PER WINDOW SCHEDULE.
 - ③ REMOVE DOOR. PREPARE FOR A NEW WINDOW OPENING TO MATCH EXISTING INFILL WINDOW.
 - ④ REMOVE WINDOW. PREPARE FOR A NEW DOOR OPENING TO MATCH PREVIOUS INFILL DOOR. PREPARE TO INSTALL NEW DOOR AS PER DOOR SCHEDULE.
 - ⑤ INSTALL NEW WINDOW WOOD SHUTTERS TO MATCH PREVIOUS REMOVED SHUTTERS. USE REAL SHUTTER HARDWARE.
 - ⑥ EXISTING TO REMAIN

SEE WINDOWS CUTSHHETS AND SPECS IN ATTACHMENT NO.1
SEE WINDOWS CROSS SECTIONS IN ATTACHMENT NO.2

① **SECOND FLOOR PLAN**
SCALE: 3/16"=1'-0"



SEE WINDOWS CUTSHHETS AND SPECS IN ATTACHMENT NO.1
SEE WINDOWS CROSS SECTIONS IN ATTACHMENT NO.2

SEE SHEET A008 FOR TYPICAL WINDOW INSTALLATION DETAIL

① DOOR / WINDOW TYPES

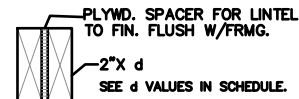
SCALE: N.T.S.

WINDOW SCHEDULE						
TAG NO.	DIMENSION		TYPE	MATERIAL	QYT.	REMARKS
	WIDTH	HEIGHT				
①	34"	60"	DH	WOOD	3	2-OVER-2 DIVIDED-LITE DOUBLE-HUNG WINDOWS (1.25" TDL MUNTINS)
②	34"	48"	DH	WOOD	9	6-OVER-6 DIVIDED-LITE DOUBLE-HUNG WINDOWS (7/8" SDL MUNTINS)
③	30"	44"	DH	WOOD	8	6-OVER-6 DIVIDED-LITE DOUBLE-HUNG WINDOWS (7/8" SDL MUNTINS)
④	34"	44"	DH	WOOD	3	6-OVER-6 DIVIDED-LITE DOUBLE-HUNG WINDOWS (7/8" SDL MUNTINS)
⑤	24"	24"	PICTURE	WOOD	2	SINGLE 6-LITE (7/8" SDL MUNTINS)
⑥	34"	48"	DH	WOOD	1	2-OVER-2 DIVIDED-LITE DOUBLE-HUNG WINDOWS (1.25" TDL MUNTINS)
⑦	30"	36"	DH	WOOD	1	6-OVER-6 DIVIDED-LITE DOUBLE-HUNG WINDOWS (7/8" SDL MUNTINS)

ALL WINDOWS TO HAVE 4" WOOD TRIM AND WOOD SILL

DOOR SCHEDULE							
DOOR NO.	TYPE	DOOR		FRAME		FIRE RATING	HDWR SET
		DOOR SIZE	MATERIAL	MATERIAL	SADDLE		
DOOR 1	RP/SC	2'-8" X 8'-0"	QTY. 1	WOOD	WOOD	ALUM	1, A
							W/ GLASS TRANSOM

DOOR HEADER SCHEDULE		
EXCEPT WHERE NOTED / SPECIFIED ON PLANS		
WALL OPN'G	LINTEL SPECIFICATIONS FOR 2X4 WALL FRAME	LINTEL SPECIFICATIONS FOR 2X6 WALL FRAME
0' TO 3'	(2)2"x10" FILL W/ 1/2" PLYWD SPACER	(3)2"x10" FILL W/ 1/2" PLYWD SPACER
3'-1" TO 9'	(2)2"x12" FILL W/ 1/2" PLYWD SPACER	(3)2"x12" FILL W/ 1/2" PLYWD SPACER



WINDOW NOTES:

- ALL EGRESS WINDOWS OR RESCUE WINDOWS FROM SLEEPING ROOMS MUST HAVE A MIN NET CLEAR OPN'G OF 5.7 S.F W/ MIN NET CLEAR DIMENSIONS OF 24" IN HEIGHT AND 20" IN WIDTH.
- ALL EGRESS WINDOW SILL HEIGHT MUST NOT EXCEED 44" A.F.F.
- AL WINDOWS TO HAVE FLASHING AS PER MANUFACTURE SPECIFICATIONS AND RECOMMENDATIONS.
- ALL WINDOWS TO HAVE FULL HEIGHT SCREEN.
- ALL WINDOWS TO COMPLY WITH WINDOW FALL PROTECTION SECTION R312.2.1 (FOR ALL WINDOWS WITH SILL HIGHER THAN 24" AND FINISH FLOOR HIGHER THAN 72" ABOVE FINISH GRADE OR A SURFACE BELOW)
- GC TO COORDINATE WITH WINDOW MANUFACTURER FOR ROUGH OPENING REQUIREMENTS

WINDOW ABBREVIATIONS:

DH: DOUBLE HUNG WINDOW
PIC: PICTURE WINDOW
TG: TEMPER GLASS
FG: FROSTED GLASS
CSMT: CASEMENT WINDOW

REVIEWED

By Laura DIPasquale at 2:19 pm, Dec 12, 2025

WINDOW HEADERS

- ALL WINDOWS HAVE THE FOLLOWING HEADERS (EXCEPT WHERE OTHERWISE NOTED ON PLANS)
1ST FLOOR = (3) 2"x12" W/ 1/2" PLYWOOD SPACER
2ND FLOOR = (3) 2"x10" W/ 1/2" PLYWOOD SPACER
- ALL WINDOW HEADERS TO BE FRAMED DIRECTLY BELOW THE WALL TOP PLATES.
- BASEMENT WINDOWS TO HAVE (2) 4"x8" PRE-CAST LINTEL REINFORCED W/ 2# 4 REBARS
- PROVIDE DBL JACK STUDS FOR ALL HEADERS W/ OPENING MORE THAN 3'-0" (TYP.)

DOOR NOTES

HARDWARE LEGEND

1 ENTRANCE LOCKSET	A DEADBOLT W/THURBTURN • INTER
2 PRIVACY LOCKSET	B OVERHEAD CLOSER
3 PASSAGE LOCKSET	C PEEPHOLE
4 FLUSH PULLS	D SELF-CLOSING

TYPE LEGEND

RP/SC RAISED PANEL / SOLID CORE
O.H. OVERHANG
RP/ HC RAISED PANEL / HOLLOW CORE
WD/GL WOOD & GLASS

INTERIOR DOORS 6 PANELS COLONIST BY CRAFT MASTER OR EQ.

** DOOR TO BE UNDER CUT FOR 4" AT THE BOTTOM
WALL BASE TO RUN UNDER CUT DOOR

APPROVED
Montgomery County
Historic Preservation Commission
Karen B. B. B.

REVISIONS

17017 GEORGIA AVE
WINDOWS REPLACEMENT
17017 GEORGIA AVE.
OLNEY, MD 20832

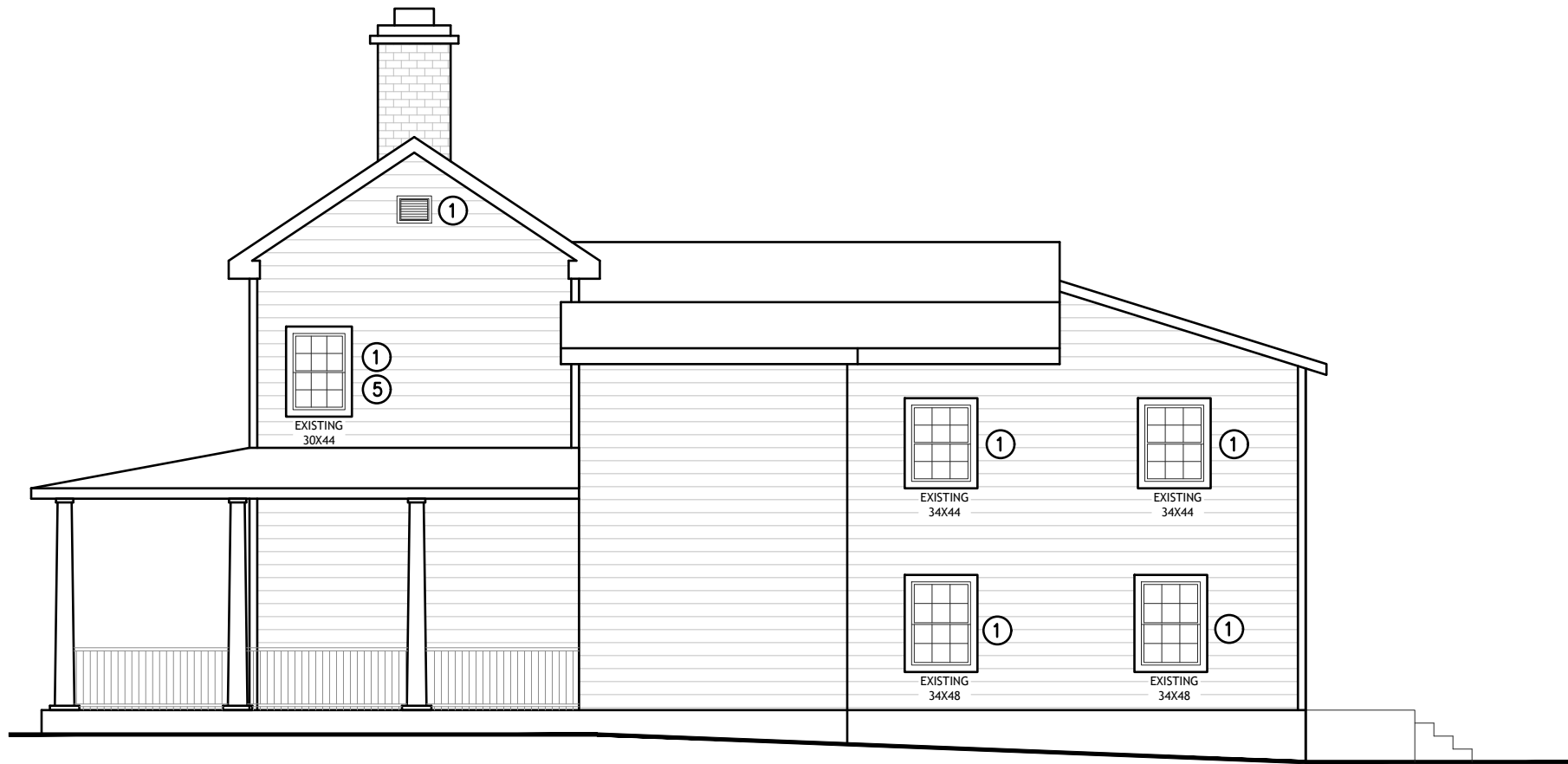
WINDOW
SCHEDULE

SHEET
A003

12/11/2025

BATHRAUI
DESIGN BUILD
TEL: (443) 841-8920

EXISTING
② RIGHT - SW ELEVATION
SCALE: 1/16"=1'-0"



EXISTING
① FRONT - NW ELEVATION
SCALE: 1/16"=1'-0"



SCOPE OF WORK KEY NOTES:

- ① REMOVE EXISTING VINYL WINDOW. INSTALL NEW WINDOW AS PER WINDOW SCHEDULE.
- ② RESTORE WINDOW OPENING. INSTALL NEW WINDOW AS PER WINDOW SCHEDULE.
- ③ REMOVE DOOR. PREPARE FOR A NEW WINDOW OPENING TO MATCH EXISTING INFILL WINDOW.
- ④ REMOVE WINDOW. PREPARE FOR A NEW DOOR OPENING TO MATCH PREVIOUS INFILL DOOR. PREPARE TO INSTALL NEW DOOR AS PER DOOR SCHEDULE.
- ⑤ INSTALL NEW WINDOW WOOD SHUTTERS TO MATCH PREVIOUS REMOVED SHUTTERS. USE REAL SHUTTER HARDWARE.
- ⑥ EXISTING TO REMAIN

REVIEWED

By Laura DiPasquale at 2:19 pm, Dec 12, 2025

APPROVED

Montgomery County

Historic Preservation Commission

Karen Bulleit

BATHRAUI
DESIGN BUILD
TEL: (443) 841-8920

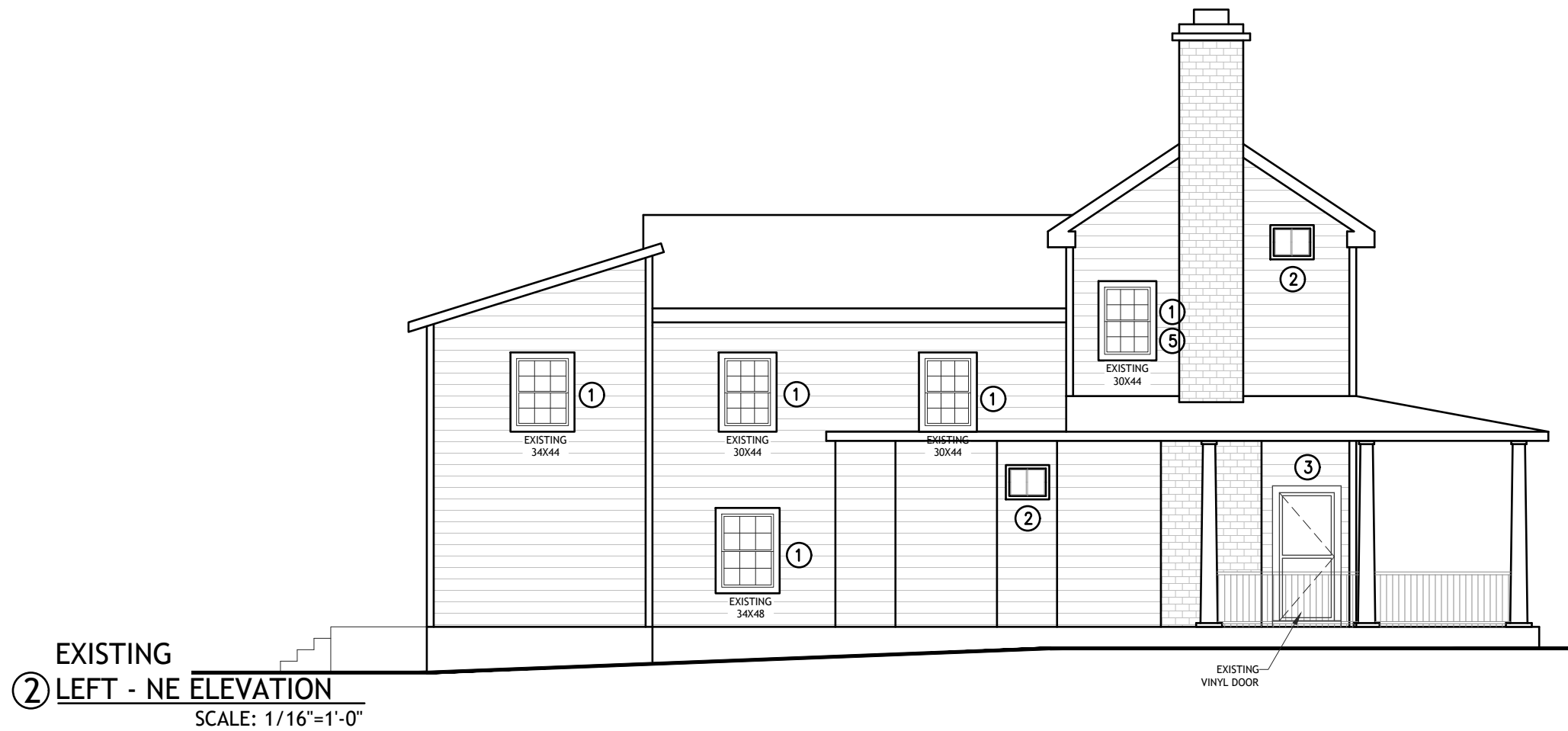
REVISIONS

17017 GEORGIA AVE
WINDOWS REPLACEMENT
17017 GEORGIA AVE.
OLNEY, MD 20832

EXISTING
ELEVATIONS

SHEET
A004

12/11/2025



- SCOPE OF WORK KEY NOTES:
- 1 REMOVE EXISTING VINYL WINDOW. INSTALL NEW WINDOW AS PER WINDOW SCHEDULE.
 - 2 RESTORE WINDOW OPENING. INSTALL NEW WINDOW AS PER WINDOW SCHEDULE.
 - 3 REMOVE DOOR. PREPARE FOR A NEW WINDOW OPENING TO MATCH EXISTING INFILL WINDOW.
 - 4 REMOVE WINDOW. PREPARE FOR A NEW DOOR OPENING TO MATCH PREVIOUS INFILL DOOR. PREPARE TO INSTALL NEW DOOR AS PER DOOR SCHEDULE.
 - 5 INSTALL NEW WINDOW WOOD SHUTTERS TO MATCH PREVIOUS REMOVED SHUTTERS. USE REAL SHUTTER HARDWARE.
 - 6 EXISTING TO REMAIN

REVISIONS

17017 GEORGIA AVE
WINDOWS REPLACEMENT
17017 GEORGIA AVE.
OLNEY, MD 20832

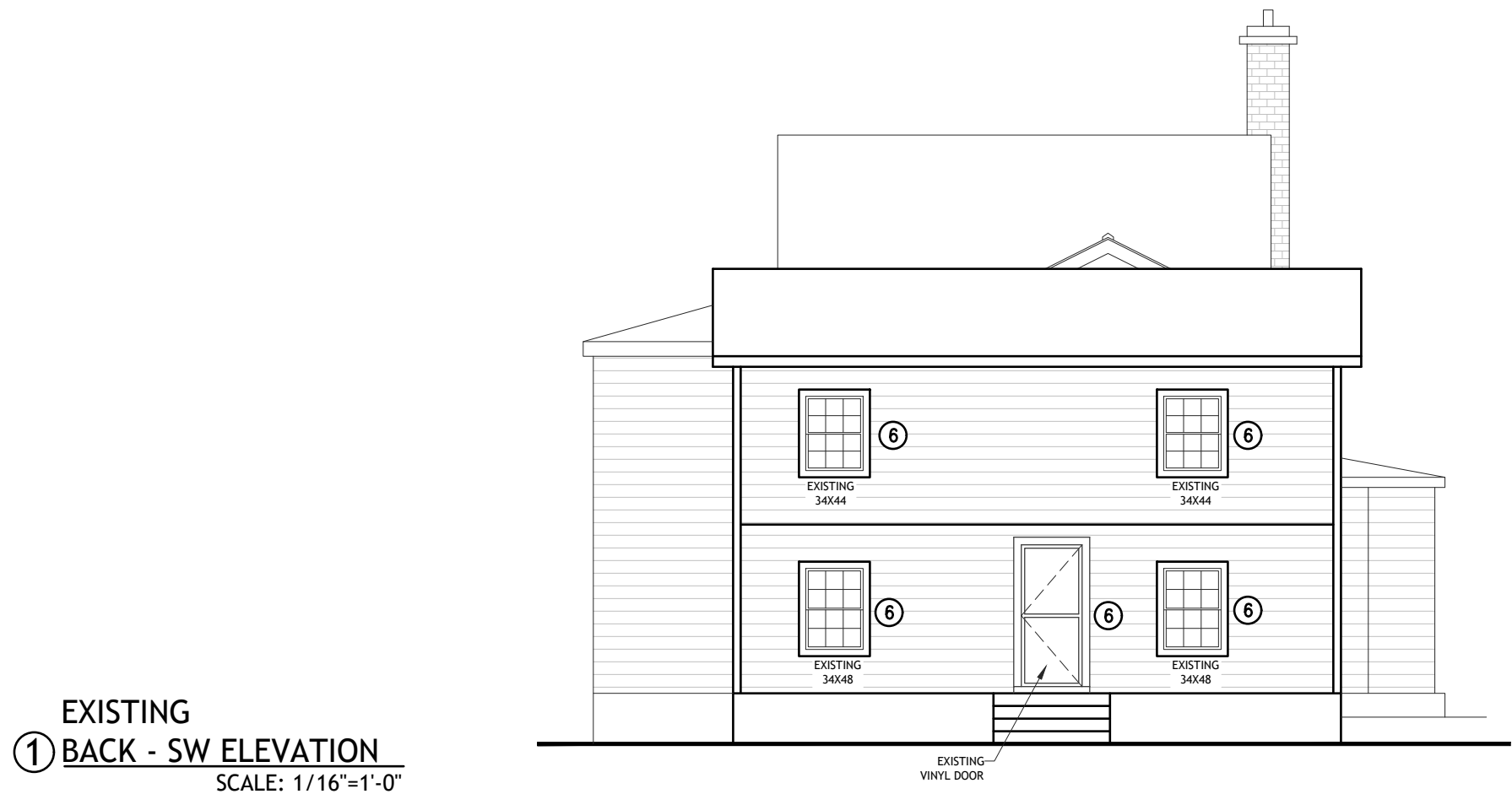
EXISTING
ELEVATIONS

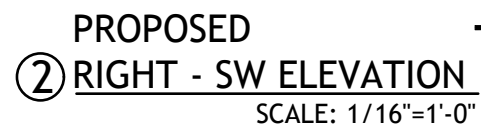
SHEET
A005

12/11/2025

REVIEWED
By Laura DiPasquale at 2:19 pm, Dec 12, 2025

APPROVED
Montgomery County
Historic Preservation Commission
Karen Buelit





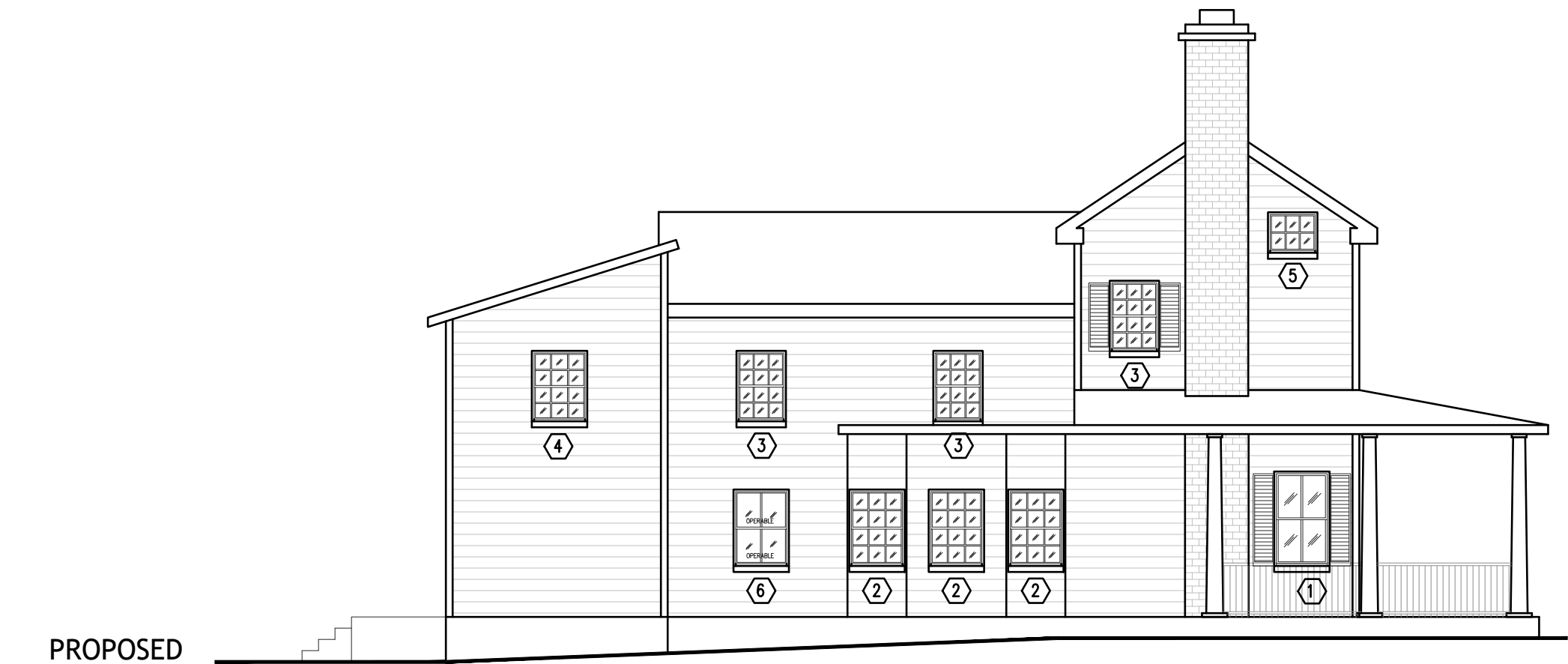
- BATRAUTI**
DESIGN BUILD
TEL: (438) 841-8920

[illegible]

By Laura DiPasquale at 2:19 pm, Dec 12, 2025

Karen Buntz

12/11/2025



PROPOSED
② LEFT - NE ELEVATION
SCALE: 1/16"=1'-0"



PROPOSED
① BACK - SW ELEVATION
SCALE: 1/16"=1'-0"

SCOPE OF WORK KEY NOTES:

- ① REMOVE EXISTING VINYL WINDOW. INSTALL NEW WINDOW AS PER WINDOW SCHEDULE.
- ② RESTORE WINDOW OPENING. INSTALL NEW WINDOW AS PER WINDOW SCHEDULE.
- ③ REMOVE DOOR. PREPARE FOR A NEW WINDOW OPENING TO MATCH EXISTING INFILL WINDOW.
- ④ REMOVE WINDOW. PREPARE FOR A NEW DOOR OPENING TO MATCH PREVIOUS INFILL DOOR. PREPARE TO INSTALL NEW DOOR AS PER DOOR SCHEDULE.
- ⑤ INSTALL NEW WINDOW WOOD SHUTTERS TO MATCH PREVIOUS REMOVED SHUTTERS. USE REAL SHUTTER HARDWARE.
- ⑥ EXISTING TO REMAIN

REVISIONS

REVIEWED

By Laura DiPasquale at 2:19 pm, Dec 12, 2025

APPROVED

Montgomery County

Historic Preservation Commission

Karen Bunkit

17017 GEORGIA AVE
WINDOWS REPLACEMENT
17017 GEORGIA AVE.
OLNEY, MD 20832

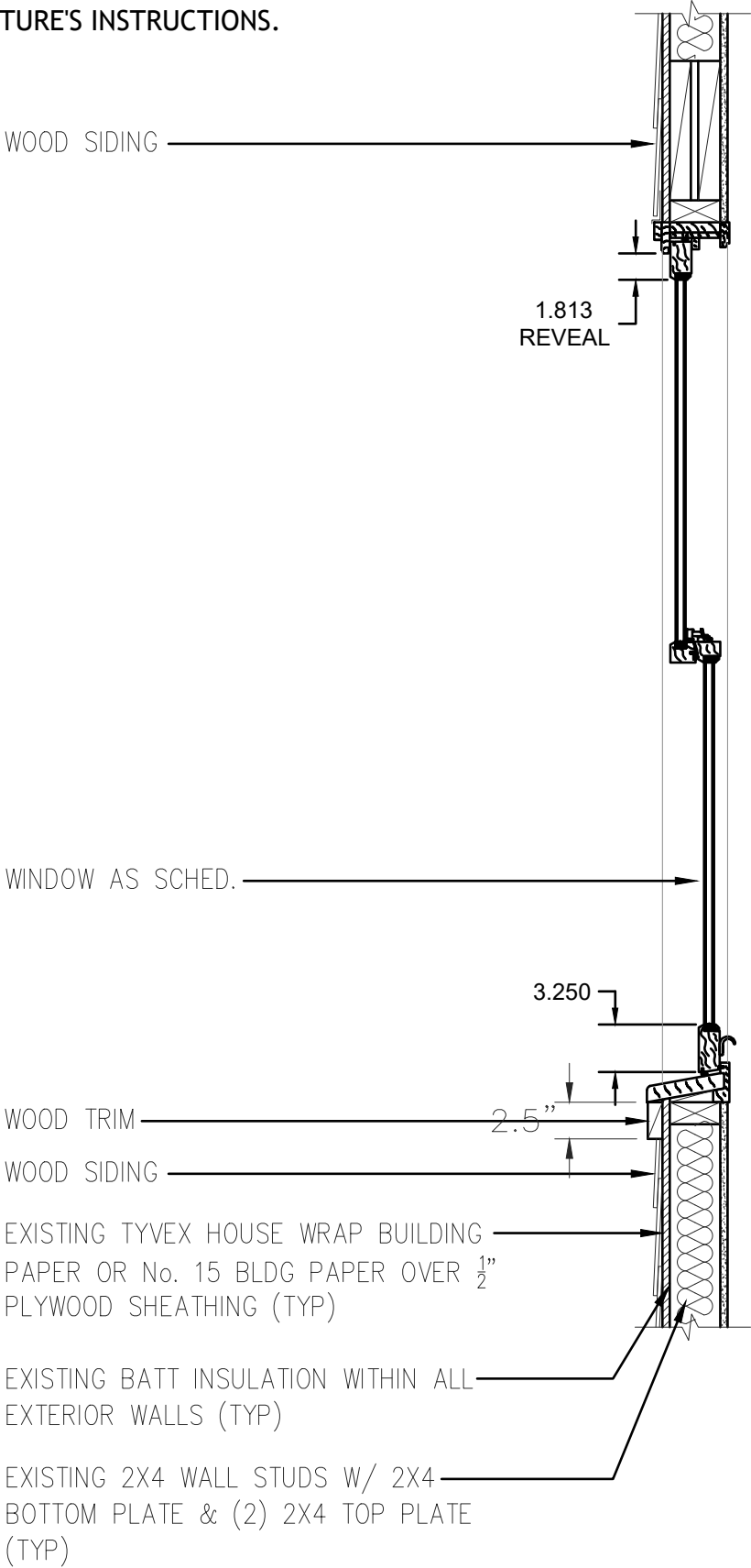
PROPOSED
ELEVATIONS

SHEET

A007

12/11/2025

CONTRACTOR:
WINDOWS TO BE INSTALLED AS PER
MANUFACTURE'S INSTRUCTIONS.



① **TYPICAL WINDOW INSTALLATION**
SCALE: 1"=1'-0"

SEE WINDOWS CUTSHHETS AND SPECS IN ATTACHMENT NO.1
SEE WINDOWS CROSS SECTIONS IN ATTACHMENT NO.2

REVIEWED
By Laura DiPasquale at 2:19 pm, Dec 12, 2025

APPROVED
Montgomery County
Historic Preservation Commission
Karen Benoit

REVISIONS	

17017 GEORGIA AVE
WINDOWS REPLACEMENT
17017 GEORGIA AVE.
OLNEY, MD 20832

TYPICAL
WINDOW
INSTALL
SECTION

SHEET
A008

12/11/2025

Attachment No.1



Quotation

Supreme Aluminum

5215 Lawrence Place
Hyattsville,
United States

Quote ID SQBJ001104-1

P.O. Number

Quoted for Account

Ship-to

Same as Bill-to

,
United States

,
United States

Prepared by Bryan, Friedman

Prepared on 10/14/2025

Available to 11/13/2025

Quote Information

Quote ID SQBJ001104-1

Quote Name R Amaya- Church

Total Lines 7

Total Value 40,089.09

Status Open

Freight Terms

All prices are in USD

REVIEWED

By Laura DiPasquale at 2:19 pm, Dec 12, 2025

APPROVED

Montgomery County

Historic Preservation Commission

Karen B. Smith

All units, quantities and accessories have been verified and accepted

Accepted by _____

Date _____

Application version 8.1.0.73

Printed on 12/9/2025

Content Version 1.0.0.0

Page 1 of 9

Attachment No.1

5215 Lawrence Place
Hyattsville,
United States



Quotation

Supreme Aluminum

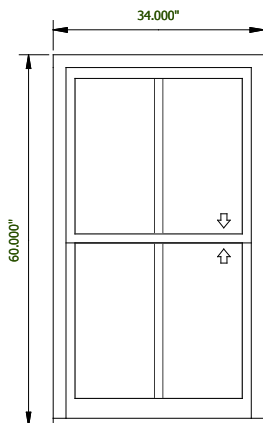
Quote ID

SQBJ001104-1

P.O. Number

Line	Label	Qty	UOM	Family/Part Number	Unit	Extended
1		3.0000		EW300	1,682.24	5,046.73

All-Wood | Eclipse Premium Double Hung | 4 9/16" Full Jamb



View From Exterior

Frame Width=34,
Frame Height=60,
cPVC Blinstop & Sill=No,
Exterior Casing Profile=None,
Sill Extension=None,
Sill Ears=No,
Extension Jamb=No,
Bottom Sash Rail Height=3 1/4",
Wood Species=Pine,
Exterior Finish=Unfinished,
Interior Finish=Unfinished,
1 3/4" Thick Sash=No,
Glass Type=Cardinal LOE 270,
Glass Thickness=DS 1/8",
Top Sash Grille Type=1-1/8" True Divided Lite,
Top Sash Grille Type=1-1/8" True Divided Lite,
Top Sash Grille Pattern=Divided/Colonial,
Top Sash # of Lites Wide=2,
Top Sash # of Lites High=1,
Bottom Sash Grille =1-1/8" True Divided Lite,
Bottom Sash Grille =1-1/8" True Divided Lite,
Grille Pattern Bottom=Divided/Colonial,
Top Sash # of Lites Wide=2,
Top Sash # of Lites High=1,
Lock Style=Restoration II,
Lock Finish=White (Painted),
of Locks=2,
Sash Lift Style=Finger Lift (Metal),
Custom Lift Quantity=False,
Number of Lifts=2,
Tilt Latch Finish=White (Painted),
Screen Style=None,
Top Sash Balance Type=Block and Tackle,
Top Sash Balance Number - Spring Gauge=26-D,
Bottom Sash Balance Type=Block and Tackle,
Bottom Sash Balance Number - Spring Gauge=28-D,
Net Clear Opening Width=29 3/4,
Net Clear Opening Height=22,
Net Clear Opening Area=4.681,
U-Factor=.33,
R-Value=3.0,
Solar Heat Gain Coefficient=.25,
Condensation Resistance Factor=57,
Test Speciman=44 in x 75 3/4 in,
Air Infiltration=.14 cfm / sq ft,
Performance Class=LC,
Performance Grade=40,
Design Pressure=DP40,
Certification=None,
Performance=Contact Trimline

REVIEWED

By Laura DiPasquale at 2:19 pm, Dec 12, 2025

APPROVED

Montgomery County

Historic Preservation Commission

Karen B. Smith

Application version 8.1.0.73

Content Version 1.0.0.0

Attachment No.1



Quotation

Supreme Aluminum

5215 Lawrence Place
Hyattsville,
United States

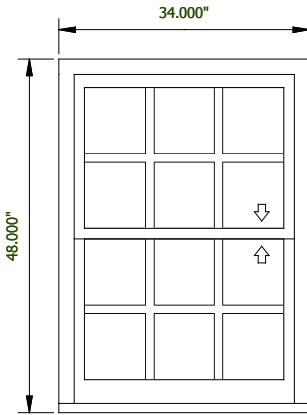
Quote ID

SQBJ001104-1

P.O. Number

Line	Label	Qty	UOM	Family/Part Number	Unit	Extended
2		9.0000		EW300	1,377.13	12,394.16

All-Wood | Eclipse Premium Double Hung | 4 9/16" Full Jamb



View From Exterior

Frame Width=34,
Frame Height=48,
cPVC Blinstop & Sill=No,
Exterior Casing Profile=None,
Sill Extension=None,
Sill Ears=No,
Extension Jamb=No,
Bottom Sash Rail Height=3 1/4",
Wood Species=Pine,
Exterior Finish=Unfinished,
Interior Finish=Unfinished,
1 3/4" Thick Sash=No,
Glass Type=Cardinal LOE 270,
Glass Thickness=DS 1/8",
Top Sash Grille Type=Simulated Divided Lite (Wood Exterior),
Top Sash Grille Option=7/8" SDL,
Top Sash Sash Interior Grille=Permanent,
Top Sash Spacer Bar=Yes,
Top Sash Grille Pattern=Divided/Colonial,
Top Sash # of Lites Wide=3,
Top Sash # of Lites High=2,
Bottom Sash Grille =Simulated Divided Lite (Wood Exterior),
Bottom Sash Grille Option=7/8" SDL,
Bottom Sash Interior Grille=Permanent,
Bottom Sash Spacer Bar=Yes,
Grille Pattern Bottom=Divided/Colonial,
Top Sash # of Lites Wide=3,
Top Sash # of Lites High=2,
Lock Style=Restoration II,
Lock Finish=White (Painted),
of Locks=2,
Sash Lift Style=Finger Lift (Metal),
Custom Lift Quantity=False,
Number of Lifts=2,
Tilt Latch Finish=White (Painted),
Screen Style=None,
Top Sash Balance Type=Block and Tackle,
Top Sash Balance Number - Spring Gauge=20-D,
Bottom Sash Balance Type=Block and Tackle,
Bottom Sash Balance Number - Spring Gauge=22-C,
Net Clear Opening Width=29 3/4,
Net Clear Opening Height=16,
Net Clear Opening Area=3.441,
Solar Heat Gain Coefficient=.25,
Condensation Resistance Factor=57,
Test Speciman=44 in x 75 3/4 in,
Air Infiltration=.14 cfm / sq ft,
Performance Class=LC,
Performance Grade=40,
Design Pressure=DP40,
Certification=None,
Performance=Contact Trimline

REVIEWED

By Laura DIPasquale at 2:20 pm, Dec 12, 2025

APPROVED

Montgomery County

Historic Preservation Commission

Karen Benoit

Application version 8.1.0.73

Content Version 1.0.0.0

Attachment No.1

5215 Lawrence Place
Hyattsville,
United States



Quotation

Supreme Aluminum

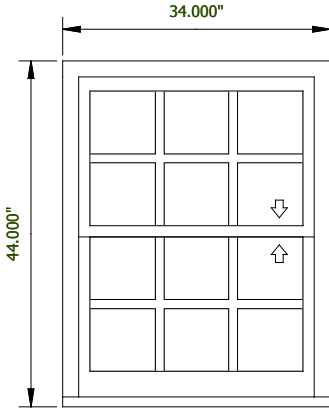
Quote ID

SQBJ001104-1

P.O. Number

Line	Label	Qty	UOM	Family/Part Number	Unit	Extended
3		3.0000		EW300	1,377.13	4,131.39

All-Wood | Eclipse Premium Double Hung | 4 9/16" Full Jamb



View From Exterior

Frame Width=34,
Frame Height=44,
cPVC Blinstop & Sill=No,
Exterior Casing Profile=None,
Sill Extension=None,
Sill Ears=No,
Extension Jamb=No,
Bottom Sash Rail Height=3 1/4",
Wood Species=Pine,
Exterior Finish=Unfinished,
Interior Finish=Unfinished,
1 3/4" Thick Sash=No,
Glass Type=Cardinal LOE 270,
Glass Thickness=DS 1/8",
Top Sash Grille Type=Simulated Divided Lite (Wood Exterior),
Top Sash Grille Option=7/8" SDL,
Top Sash Sash Interior Grille=Permanent,
Top Sash Spacer Bar=Yes,
Top Sash Grille Pattern=Divided/Colonial,
Top Sash # of Lites Wide=3,
Top Sash # of Lites High=2,
Bottom Sash Grille =Simulated Divided Lite (Wood Exterior),
Bottom Sash Grille Option=7/8" SDL,
Bottom Sash Interior Grille=Permanent,
Bottom Sash Spacer Bar=Yes,
Grille Pattern Bottom=Divided/Colonial,
Top Sash # of Lites Wide=3,
Top Sash # of Lites High=2,
Lock Style=Restoration II,
Lock Finish=White (Painted),
of Locks=2,
Sash Lift Style=Finger Lift (Metal),
Custom Lift Quantity=False,
Number of Lifts=2,
Tilt Latch Finish=White (Painted),
Screen Style=None,
Top Sash Balance Type=Block and Tackle,
Top Sash Balance Number - Spring Gauge=18-D,
Bottom Sash Balance Type=Block and Tackle,
Bottom Sash Balance Number - Spring Gauge=20-D,
Net Clear Opening Width=29 3/4,
Net Clear Opening Height=14,
Net Clear Opening Area=3.028,
Solar Heat Gain Coefficient=.25,
Condensation Resistance Factor=57,
Test Speciman=44 in x 75 3/4 in,
Air Infiltration=.14 cfm / sq ft,
Performance Class=LC,
Performance Grade=40,
Design Pressure=DP40,
Certification=None,
Performance=Contact Trimline

REVIEWED

By Laura DiPasquale at 2:20 pm, Dec 12, 2025

APPROVED

Montgomery County

Historic Preservation Commission

Karen Benoit

Application version 8.1.0.73

Content Version 1.0.0.0

Attachment No.1

5215 Lawrence Place
Hyattsville,
United States



Quotation

Supreme Aluminum

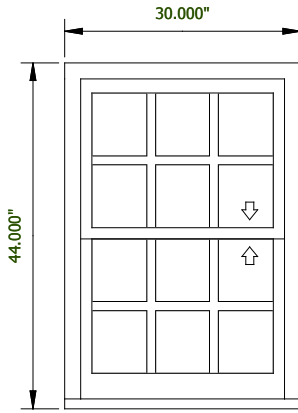
Quote ID

SQBJ001104-1

P.O. Number

Line	Label	Qty	UOM	Family/Part Number	Unit	Extended
4		8.0000		EW300	1,377.13	11,017.03

All-Wood | Eclipse Premium Double Hung | 4 9/16" Full Jamb



View From Exterior

Frame Width=30,
Frame Height=44,
cPVC Blinstop & Sill=None,
Exterior Casing Profile=None,
Sill Extension=None,
Sill Ears=None,
Extension Jamb=None,
Bottom Sash Rail Height=3 1/4",
Wood Species=Pine,
Exterior Finish=Unfinished,
Interior Finish=Unfinished,
1 3/4" Thick Sash=None,
Glass Type=Cardinal LOE 270,
Glass Thickness=DS 1/8",
Top Sash Grille Type=Simulated Divided Lite (Wood Exterior),
Top Sash Grille Option=7/8" SDL,
Top Sash Sash Interior Grille=Permanent,
Top Sash Spacer Bar=Yes,
Top Sash Grille Pattern=Divided/Colonial,
Top Sash # of Lites Wide=3,
Top Sash # of Lites High=2,
Bottom Sash Grille =Simulated Divided Lite (Wood Exterior),
Bottom Sash Grille Option=7/8" SDL,
Bottom Sash Interior Grille=Permanent,
Bottom Sash Spacer Bar=Yes,
Grille Pattern Bottom=Divided/Colonial,
Top Sash # of Lites Wide=3,
Top Sash # of Lites High=2,
Lock Style=Restoration II,
Lock Finish=White (Painted),
of Locks=2,
Sash Lift Style=Finger Lift (Metal),
Custom Lift Quantity=False,
Number of Lifts=2,
Tilt Latch Finish=White (Painted),
Screen Style=None,
Top Sash Balance Type=Block and Tackle,
Top Sash Balance Number - Spring Gauge=18-C,
Bottom Sash Balance Type=Block and Tackle,
Bottom Sash Balance Number - Spring Gauge=20-C,
Net Clear Opening Width=25 3/4,
Net Clear Opening Height=14,
Net Clear Opening Area=2.621,
Solar Heat Gain Coefficient=.25,
Condensation Resistance Factor=57,
Test Speciman=44 in x 75 3/4 in,
Air Infiltration=.14 cfm / sq ft,
Performance Class=LC,
Performance Grade=40,
Design Pressure=DP40,
Certification=None,
Performance=Contact Trimline

REVIEWED

By Laura DIPasquale at 2:20 pm, Dec 12, 2025

APPROVED

Montgomery County

Historic Preservation Commission

Karen B. Smith

Application version 8.1.0.73

Content Version 1.0.0.0

Attachment No.1

5215 Lawrence Place
Hyattsville,
United States



Quotation

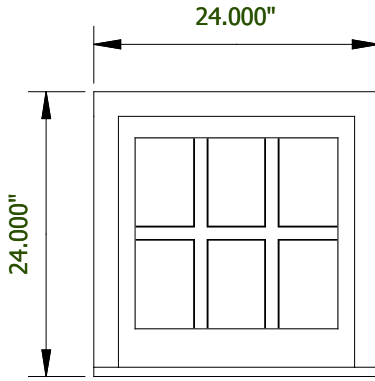
Supreme Aluminum

Quote ID SQBJ001104-1

P.O. Number

Line	Label	Qty	UOM	Family/Part Number	Unit	Extended
5		2.0000		EPW300	1,183.71	2,367.41

All-Wood | Eclipse Premium Double-Hung Picture | Full Jamb



View From Exterior

Frame Width=24,
Frame Height=24,
cPVC Blinstop & Sill=No,
Exterior Casing Profile=None,
Sill Extension=None,
Extension Jamb=No,
Bottom Sash Rail Height=3 1/4",
Wood Species=Pine,
Exterior Finish=Primed,
Interior Finish=Unfinished,
Sash Position=Exterior,
1 3/4" Thick Sash=No,
Glass Type=Cardinal LOE 270,
Glass Thickness=DS 1/8",
Glass Option=None,
Grille Option=7/8" SDL,
Sash Interior Grille=Permanent,
Spacer Bar=Yes,
Grille Pattern=Divided/Colonial,
of Lites Wide=3,
of Lites High=2,
Solar Heat Gain Coefficient=.26,
Condensation Resistance Factor=60,
Test Speciman=60 in × 60 in,
Air Infiltration=<.01cfm / sq ft,
Performance Class=CW,
Performance Grade=40,
Design Pressure=DP40,
Certification=None,
Performance=Contact Trimline

REVIEWED

By Laura DiPasquale at 2:20 pm, Dec 12, 2025

APPROVED

Montgomery County

Historic Preservation Commission

Karen Buelit

Application version 8.1.0.73

Content Version 1.0.0.0

25

f 9

Attachment No.1

5215 Lawrence Place
Hyattsville,
United States



Quotation

Supreme Aluminum

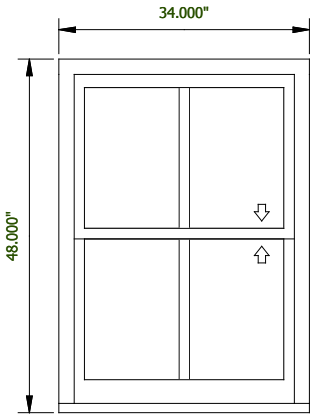
Quote ID

SQBJ001104-1

P.O. Number

Line	Label	Qty	UOM	Family/Part Number	Unit	Extended
6		1.0000		EW300	1,486.03	1,486.03

All-Wood | Eclipse Premium Double Hung | 4 9/16" Full Jamb



View From Exterior

Frame Width=34,
Frame Height=48,
cPVC Blinstop & Sill=No,
Exterior Casing Profile=None,
Sill Extension=None,
Sill Ears=No,
Extension Jamb=No,
Bottom Sash Rail Height=3 1/4",
Wood Species=Pine,
Exterior Finish=Unfinished,
Interior Finish=Unfinished,
1 3/4" Thick Sash=No,
Glass Type=Cardinal LOE 270,
Glass Thickness=DS 1/8",
Top Sash Grille Type=1-1/8" True Divided Lite,
Top Sash Grille Type=1-1/8" True Divided Lite,
Top Sash Grille Pattern=Divided/Colonial,
Top Sash # of Lites Wide=2,
Top Sash # of Lites High=1,
Bottom Sash Grille =1-1/8" True Divided Lite,
Bottom Sash Grille =1-1/8" True Divided Lite,
Grille Pattern Bottom=Divided/Colonial,
Top Sash # of Lites Wide=2,
Top Sash # of Lites High=1,
Lock Style=Restoration II,
Lock Finish=White (Painted),
of Locks=2,
Sash Lift Style=Finger Lift (Metal),
Custom Lift Quantity=False,
Number of Lifts=2,
Tilt Latch Finish=White (Painted),
Screen Style=None,
Top Sash Balance Type=Block and Tackle,
Top Sash Balance Number - Spring Gauge=20-D,
Bottom Sash Balance Type=Block and Tackle,
Bottom Sash Balance Number - Spring Gauge=22-C,
Net Clear Opening Width=29 3/4,
Net Clear Opening Height=16,
Net Clear Opening Area=3.441,
U-Factor=.33,
R-Value=3.0,
Solar Heat Gain Coefficient=.25,
Condensation Resistance Factor=57,
Test Speciman=44 in x 75 3/4 in,
Air Infiltration=.14 cfm / sq ft,
Performance Class=LC,
Performance Grade=40,
Design Pressure=DP40,
Certification=None,
Performance=Contact Trimline

REVIEWED

By Laura DIPasquale at 2:20 pm, Dec 12, 2025

APPROVED

Montgomery County

Historic Preservation Commission

Karen Bunkit

Application version 8.1.0.73

Content Version 1.0.0.0

25

9

Attachment No.1

5215 Lawrence Place
Hyattsville,
United States



Quotation

Supreme Aluminum

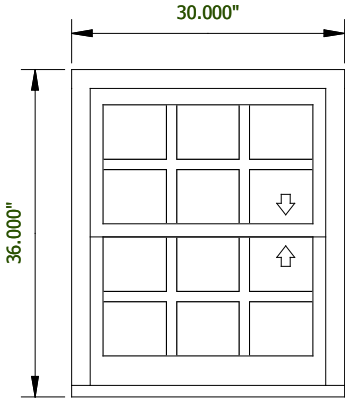
Quote ID

SQBJ001104-1

P.O. Number

Line	Label	Qty	UOM	Family/Part Number	Unit	Extended
7		1.0000		EW300	1,377.13	1,377.13

All-Wood | Eclipse Premium Double Hung | 4 9/16" Full Jamb



View From Exterior

Frame Width=30,
Frame Height=36,
cPVC Blinstop & Sill=None,
Exterior Casing Profile=None,
Sill Extension=None,
Sill Ears=None,
Extension Jamb=None,
Bottom Sash Rail Height=3 1/4",
Wood Species=Pine,
Exterior Finish=Unfinished,
Interior Finish=Unfinished,
1 3/4" Thick Sash=None,
Glass Type=Cardinal LOE 270,
Glass Thickness=DS 1/8",
Top Sash Grille Type=Simulated Divided Lite (Wood Exterior),
Top Sash Grille Option=7/8" SDL,
Top Sash Sash Interior Grille=Permanent,
Top Sash Spacer Bar=Yes,
Top Sash Grille Pattern=Divided/Colonial,
Top Sash # of Lites Wide=3,
Top Sash # of Lites High=2,
Bottom Sash Grille =Simulated Divided Lite (Wood Exterior),
Bottom Sash Grille Option=7/8" SDL,
Bottom Sash Interior Grille=Permanent,
Bottom Sash Spacer Bar=Yes,
Grille Pattern Bottom=Divided/Colonial,
Top Sash # of Lites Wide=3,
Top Sash # of Lites High=2,
Lock Style=Eclipse Tilt-Lock Combo,
Lock Finish=White (Painted),
of Locks=2,
Sash Lift Style=Metal,
Custom Lift Quantity=False,
Number of Lifts=2,
Screen Style=None,
Top Sash Balance Type=Block and Tackle,
Top Sash Balance Number - Spring Gauge=14-C,
Bottom Sash Balance Type=Block and Tackle,
Bottom Sash Balance Number - Spring Gauge=16-C,
Net Clear Opening Width=25 3/4,
Net Clear Opening Height=10,
Net Clear Opening Area=1.906,
Solar Heat Gain Coefficient=.25,
Condensation Resistance Factor=57,
Test Speciman=44 in x 75 3/4 in,
Air Infiltration=.14 cfm / sq ft,
Performance Class=LC,
Performance Grade=40,
Design Pressure=DP40,
Certification=None,
Performance=Contact Trimline

REVIEWED

By Laura DIPasquale at 2:20 pm, Dec 12, 2025

APPROVED

Montgomery County

Historic Preservation Commission

Karen Benoit

Application version 8.1.0.73

Content Version 1.0.0.0

025

of 9

Attachment No.1



Quotation

Supreme Aluminum

5215 Lawrence Place
Hyattsville,
United States

Quote ID SQBJ001104-1

P.O. Number

All prices are in USD

Adjusted Subtotal (Discounted)		37,819.89
Tax	6.00%	2,269.19
Labor Tax	0.00%	0.00
Shipping and Handling	0.00	0.00
Other Charges (Specify)	0.00	0.00
Total Quote Value		40,089.09

REVIEWED

By Laura DIPasquale at 2:20 pm, Dec 12, 2025

APPROVED

Montgomery County

Historic Preservation Commission

Karen Benoit

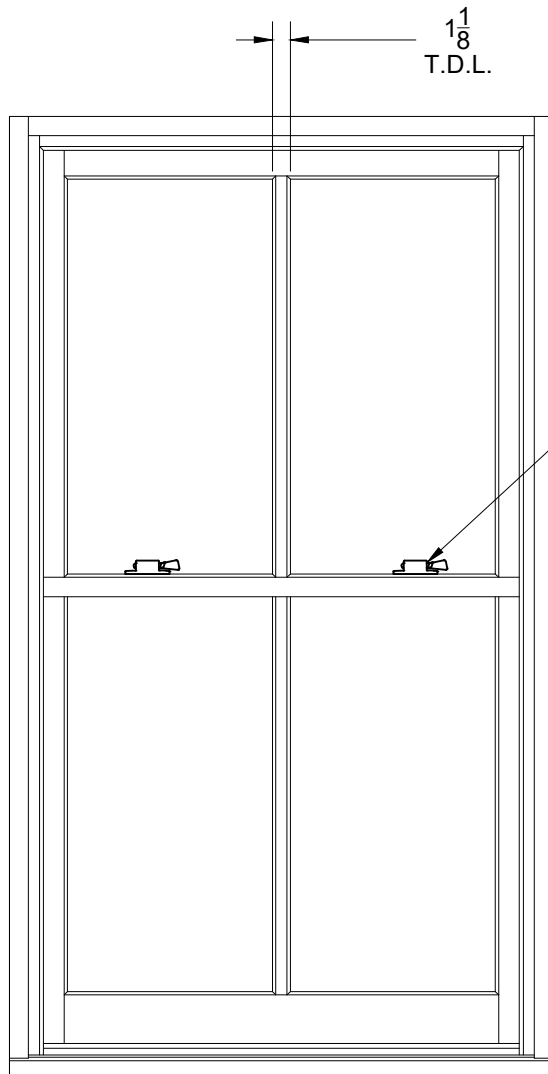
Application version 8.1.0.73

Content Version 1.0.0.0

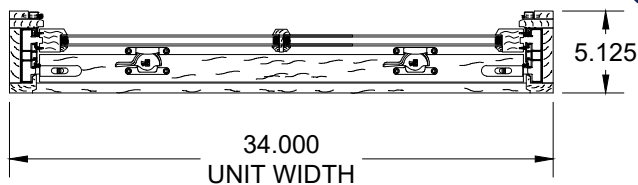
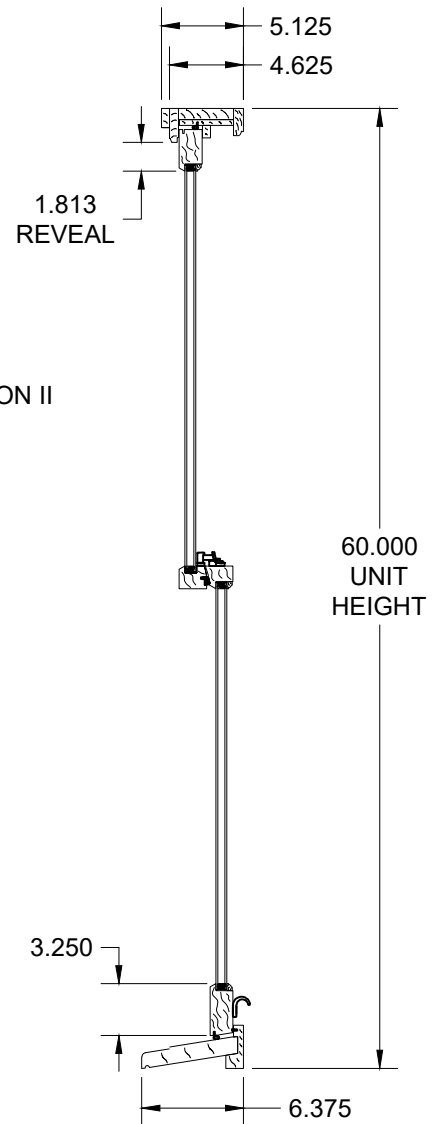
Printed on 12/9/2025

Page 9 of 9

Attachment No.2



RESTORATION II
HARDWARE



REVIEWED

By Laura DiPasquale at 2:20 pm, Dec 12, 2025

APPROVED

Montgomery County

Historic Preservation Commission

Karen B. Smith

QUOTE #: SQBJ001104-1

LINE #: 1

QTY: 3

ALL WOOD / NO cPVC

MY SIGNATURE BELOW INDICATES MY APPROVAL
OF DESIGN AND DIMENSIONS AS SHOWN.
I AUTHORIZE PRODUCTION OF SAME.

CUSTOMER: _____

BY: _____

DATE: _____

THE INFORMATION CONTAINED IN THIS DRAWING IS THE
SOLE PROPERTY OF TRIMLINE WINDOWS INC. ANY
REPRODUCTION IN PART OR AS A WHOLE WITHOUT THE
WRITTEN PERMISSION OF TRIMLINE WINDOWS INC. IS
PROHIBITED.



DESCRIPTION:

T.D.L. EW300

CUSTOMER:

SUPREME ALUMINUM

SIZE: A

SCALE:

3/4" = 1'-0"

PROJECT:

DRAWN BY:

A.F.

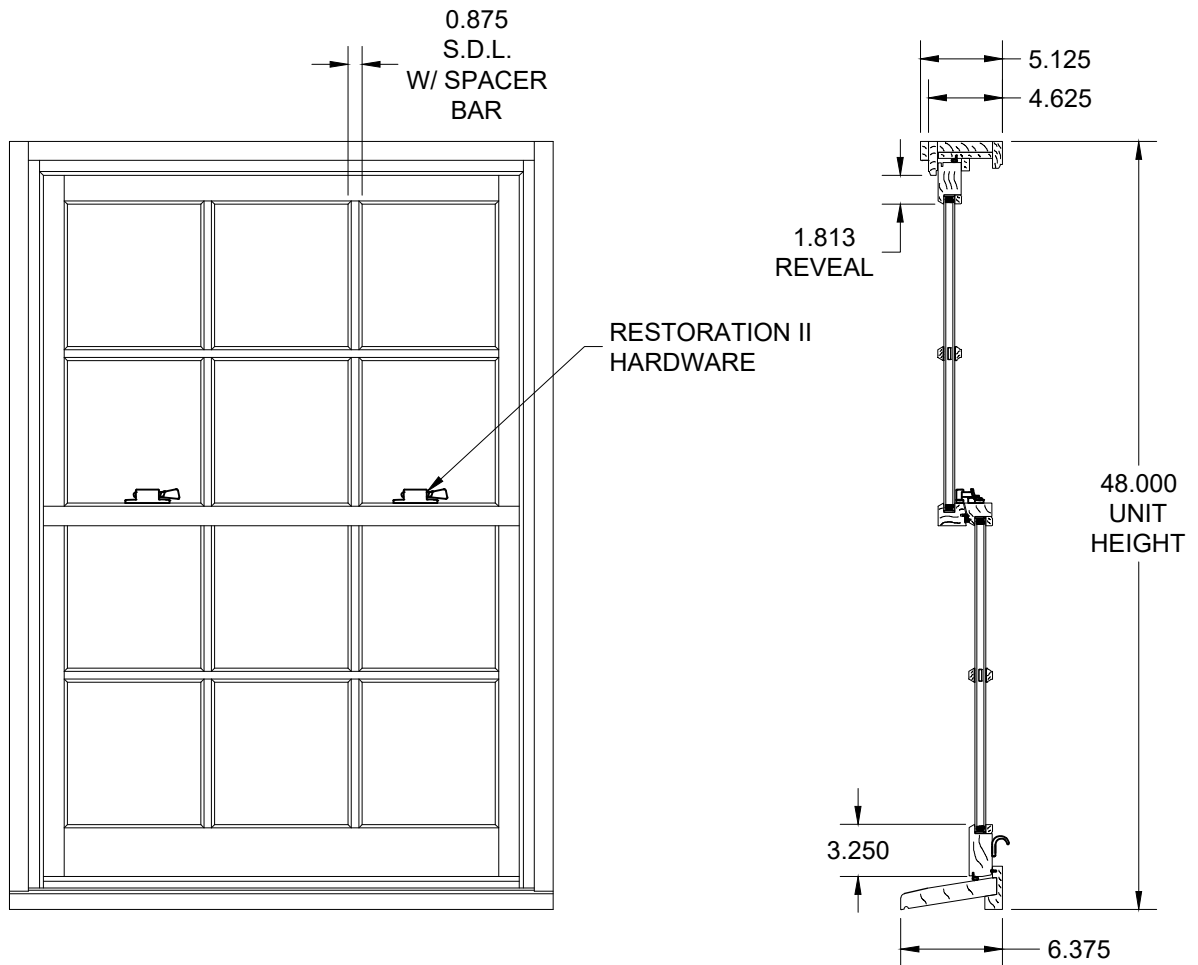
DATE:

11.10.25

DWG #:

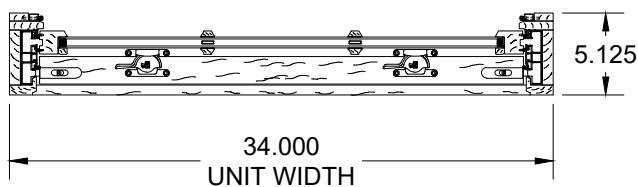
A-4150-A

Attachment No.2



REVIEWED

By Laura DiPasquale at 2:20 pm, Dec 12, 2025



APPROVED
Montgomery County
Historic Preservation Commission

Karen Benoit

QUOTE #: SQBJ001104-1
LINE #: 2
QTY: 9

ALL WOOD / NO cPVC

MY SIGNATURE BELOW INDICATES MY APPROVAL
OF DESIGN AND DIMENSIONS AS SHOWN.
I AUTHORIZE PRODUCTION OF SAME.

CUSTOMER: _____

BY: _____

DATE: _____

THE INFORMATION CONTAINED IN THIS DRAWING IS THE
SOLE PROPERTY OF TRIMLINE WINDOWS INC. ANY
REPRODUCTION IN PART OR AS A WHOLE WITHOUT THE
WRITTEN PERMISSION OF TRIMLINE WINDOWS INC. IS
PROHIBITED.



DESCRIPTION:

EW300

CUSTOMER:

SUPREME ALUMINUM

SIZE: A

SCALE:

3/4" = 1'-0"

PROJECT:

DRAWN BY:

A.F.

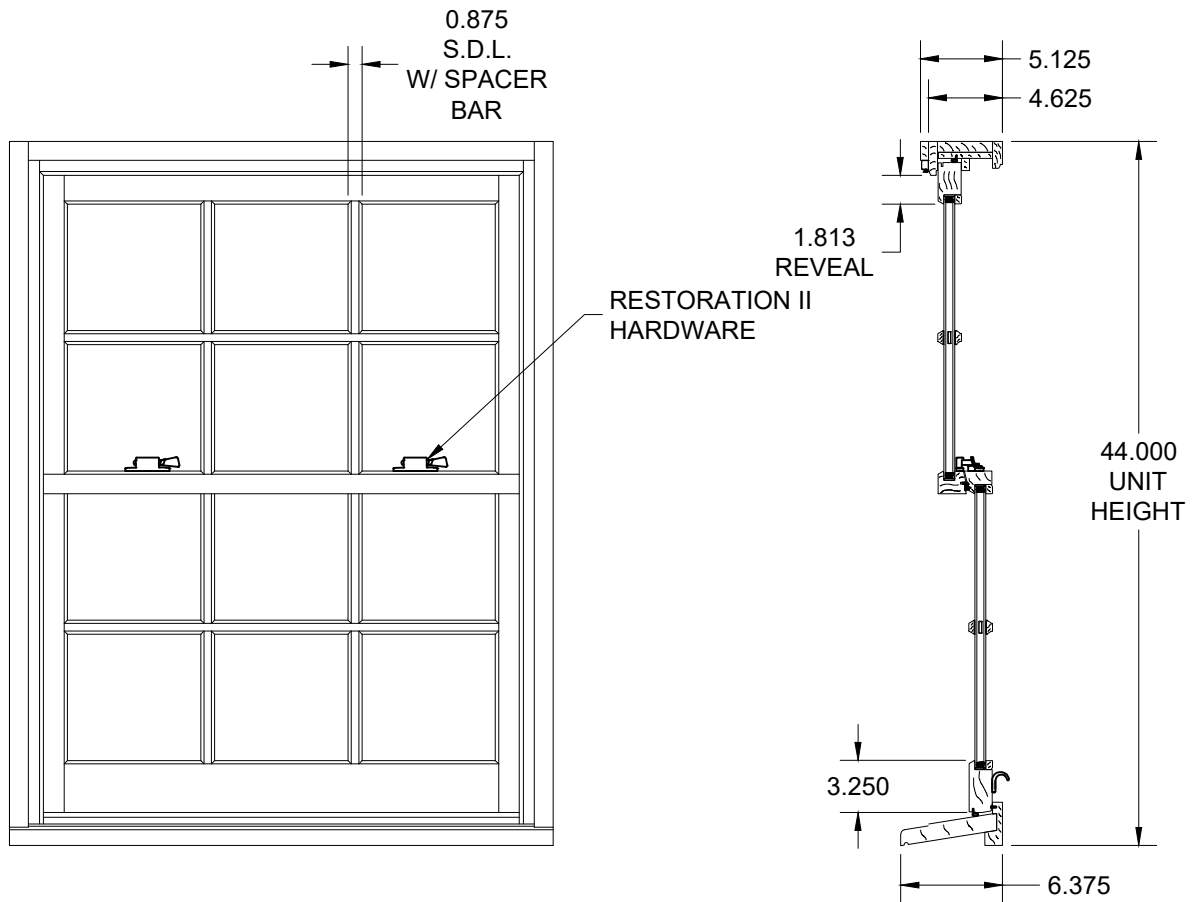
DATE:

11.10.25

DWG #:

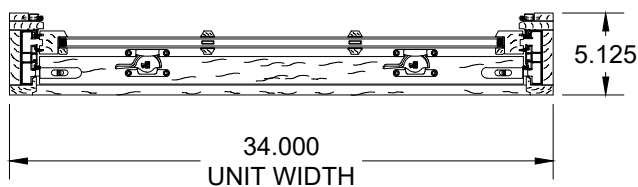
A-4150-B

Attachment No.2



REVIEWED

By Laura DiPasquale at 2:20 pm, Dec 12, 2025



APPROVED
Montgomery County
Historic Preservation Commission

Karen Benoit

QUOTE #: SQBJ001104-1
LINE #: 3
QTY: 3

ALL WOOD / NO cPVC

MY SIGNATURE BELOW INDICATES MY APPROVAL
OF DESIGN AND DIMENSIONS AS SHOWN.
I AUTHORIZE PRODUCTION OF SAME.

CUSTOMER: _____

BY: _____

DATE: _____

THE INFORMATION CONTAINED IN THIS DRAWING IS THE
SOLE PROPERTY OF TRIMLINE WINDOWS INC. ANY
REPRODUCTION IN PART OR AS A WHOLE WITHOUT THE
WRITTEN PERMISSION OF TRIMLINE WINDOWS INC. IS
PROHIBITED.



DESCRIPTION:

EW300

CUSTOMER:

SUPREME ALUMINUM

SIZE: A

SCALE:

3/4" = 1'-0"

PROJECT:

DRAWN BY:

A.F.

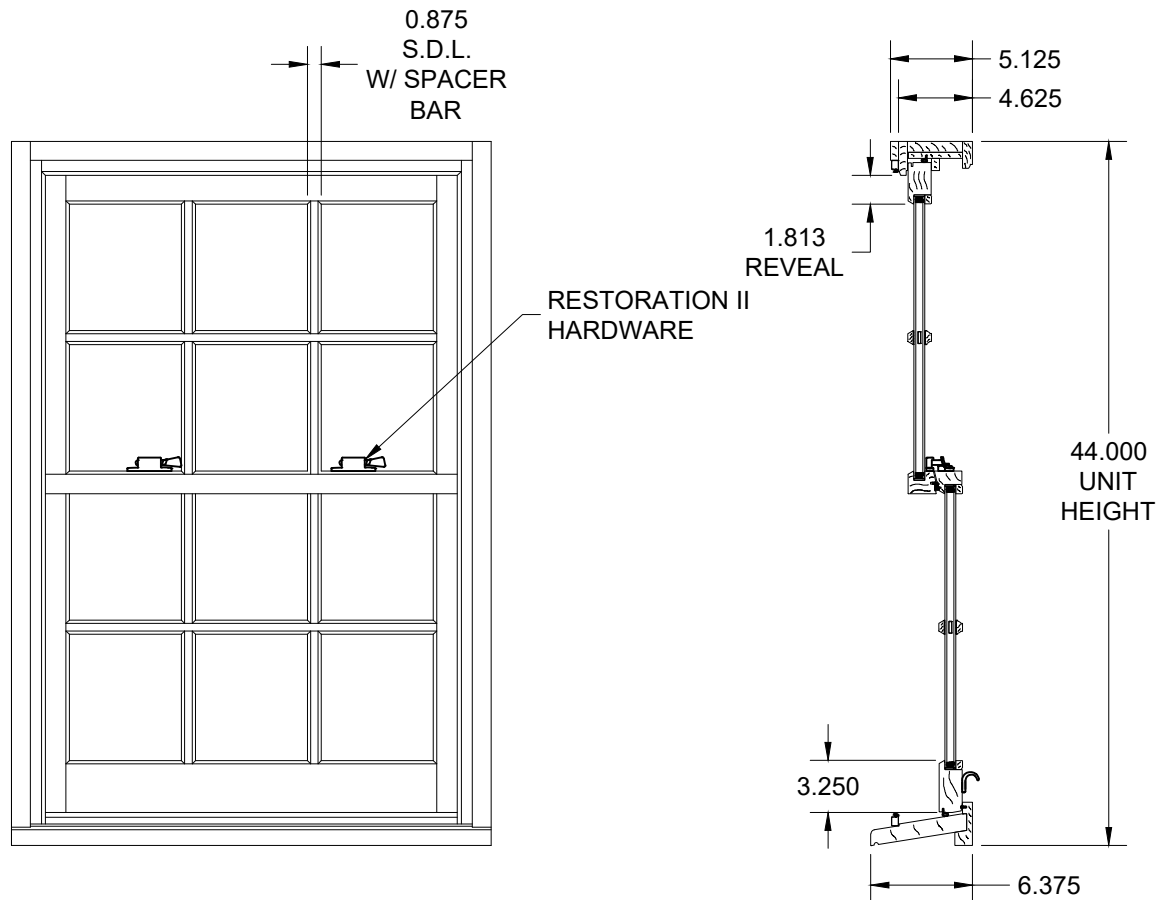
DATE:

11.10.25

DWG #:

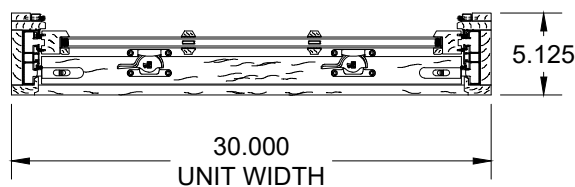
A-4150-C

Attachment No.2



REVIEWED

By Laura DiPasquale at 2:20 pm, Dec 12, 2025



QUOTE #: SQBJ001104-1
LINE #: 4
QTY: 8

ALL WOOD / NO cPVC

MY SIGNATURE BELOW INDICATES MY APPROVAL
OF DESIGN AND DIMENSIONS AS SHOWN.
I AUTHORIZE PRODUCTION OF SAME.

CUSTOMER: _____

BY: _____

DATE: _____

THE INFORMATION CONTAINED IN THIS DRAWING IS THE
SOLE PROPERTY OF TRIMLINE WINDOWS INC. ANY
REPRODUCTION IN PART OR AS A WHOLE WITHOUT THE
WRITTEN PERMISSION OF TRIMLINE WINDOWS INC. IS
PROHIBITED.



DESCRIPTION:

EW300

CUSTOMER:

SUPREME ALUMINUM

SIZE: A

SCALE:

3/4" = 1'-0"

PROJECT:

DRAWN BY:

A.F.

DATE:

11.10.25

DWG #:

A-4150-D

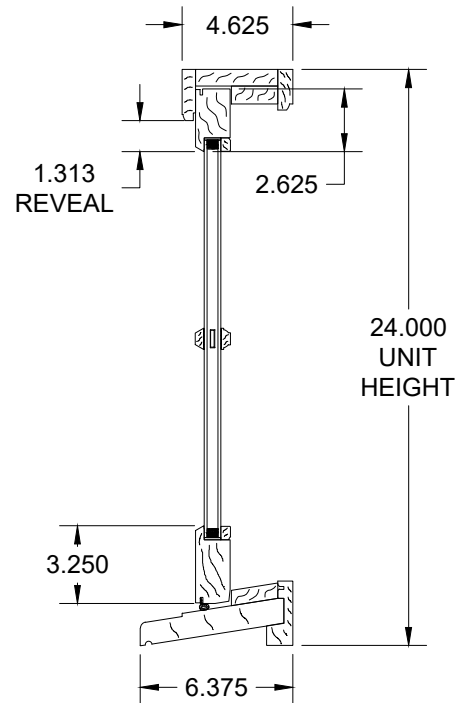
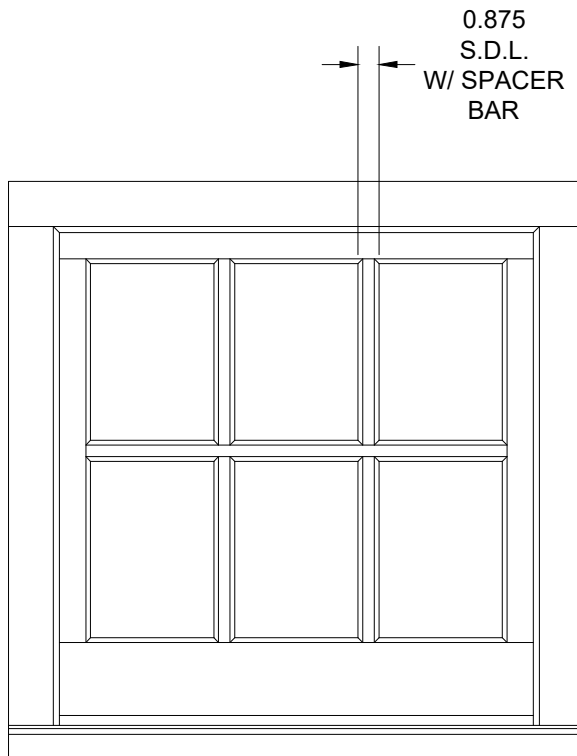
APPROVED

Montgomery County

Historic Preservation Commission

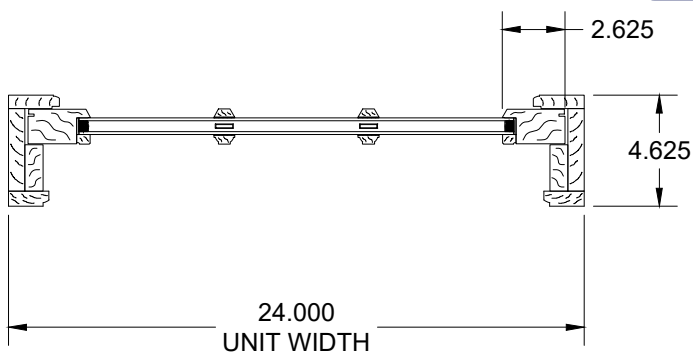
Karen Benoit

Attachment No.2



REVIEWED

By Laura DiPasquale at 2:20 pm, Dec 12, 2025



APPROVED

Montgomery County

Historic Preservation Commission

Karen Benoit

QUOTE #: SQBJ001104-1

LINE #: 5

QTY: 1

ALL WOOD / NO cPVC

MY SIGNATURE BELOW INDICATES MY APPROVAL
OF DESIGN AND DIMENSIONS AS SHOWN.
I AUTHORIZE PRODUCTION OF SAME.

CUSTOMER: _____

BY: _____

DATE: _____

THE INFORMATION CONTAINED IN THIS DRAWING IS THE
SOLE PROPERTY OF TRIMLINE WINDOWS INC. ANY
REPRODUCTION IN PART OR AS A WHOLE WITHOUT THE
WRITTEN PERMISSION OF TRIMLINE WINDOWS INC. IS
PROHIBITED.



TRIMLINE
CUSTOM WINDOWS

50 LOUISE DRIVE
IVYLAND, PENNSYLVANIA 18974

DESCRIPTION:

EPW300

CUSTOMER:

SUPREME ALUMINUM

SIZE: A

SCALE:

1-1/2" = 1'-0"

PROJECT:

DRAWN BY:

A.F.

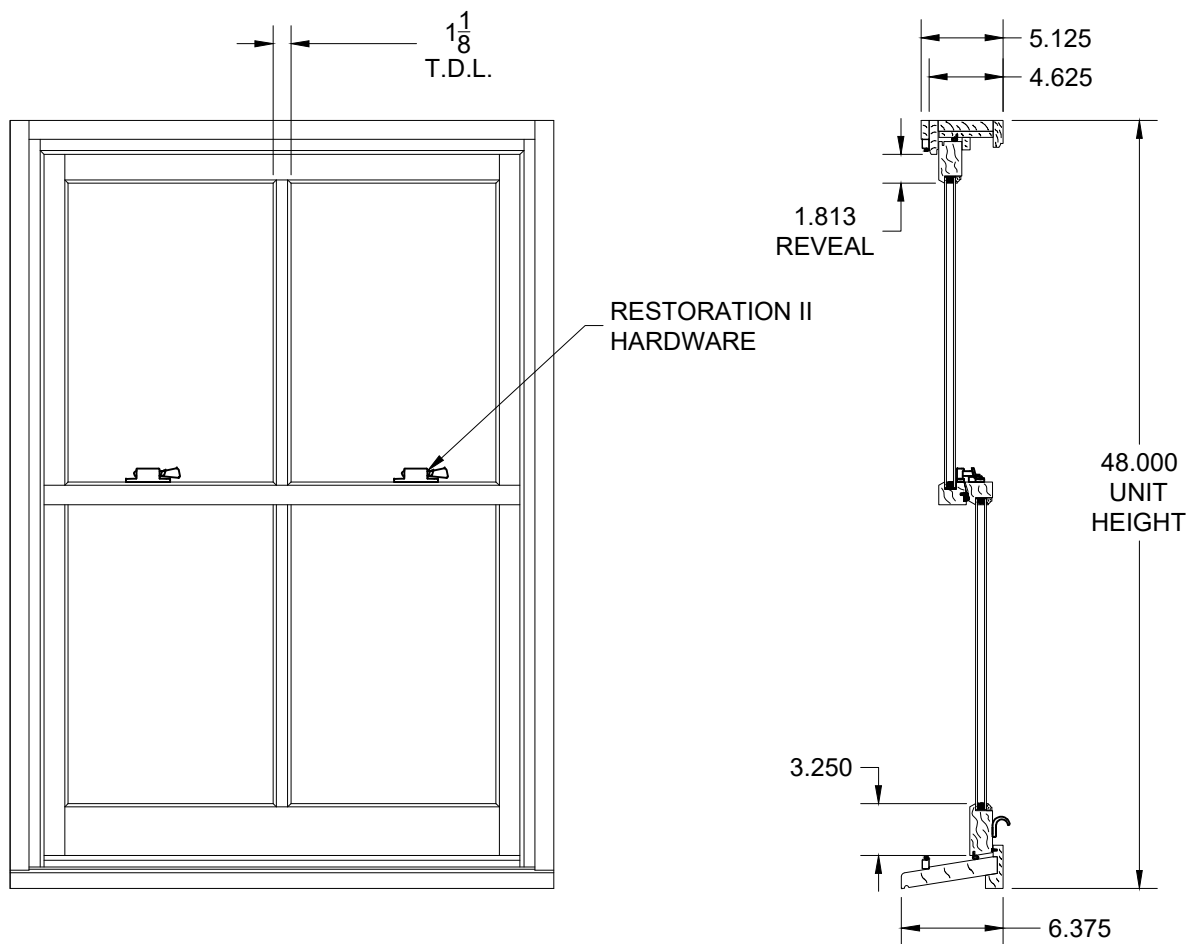
DATE:

11.10.25

DWG #:

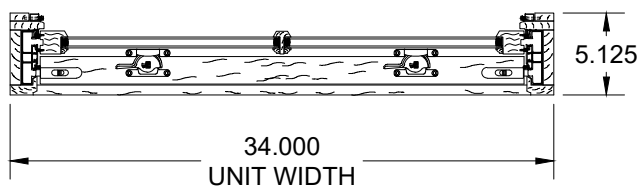
A-4150-E

Attachment No.2



REVIEWED

By Laura DiPasquale at 2:20 pm, Dec 12, 2025



QUOTE #: SQBJ001104-1
LINE #: 6
QTY: 1

ALL WOOD / NO cPVC

MY SIGNATURE BELOW INDICATES MY APPROVAL
OF DESIGN AND DIMENSIONS AS SHOWN.
I AUTHORIZE PRODUCTION OF SAME.

CUSTOMER: _____

BY: _____

DATE: _____

THE INFORMATION CONTAINED IN THIS DRAWING IS THE
SOLE PROPERTY OF TRIMLINE WINDOWS INC. ANY
REPRODUCTION IN PART OR AS A WHOLE WITHOUT THE
WRITTEN PERMISSION OF TRIMLINE WINDOWS INC. IS
PROHIBITED.



DESCRIPTION:

T.D.L. EW300

CUSTOMER:

SUPREME ALUMINUM

SIZE: A

SCALE:

$\frac{3}{4}" = 1'-0"$

PROJECT:

DRAWN BY:

A.F.

DATE:

10.16.25

DWG #:

A-4150-F

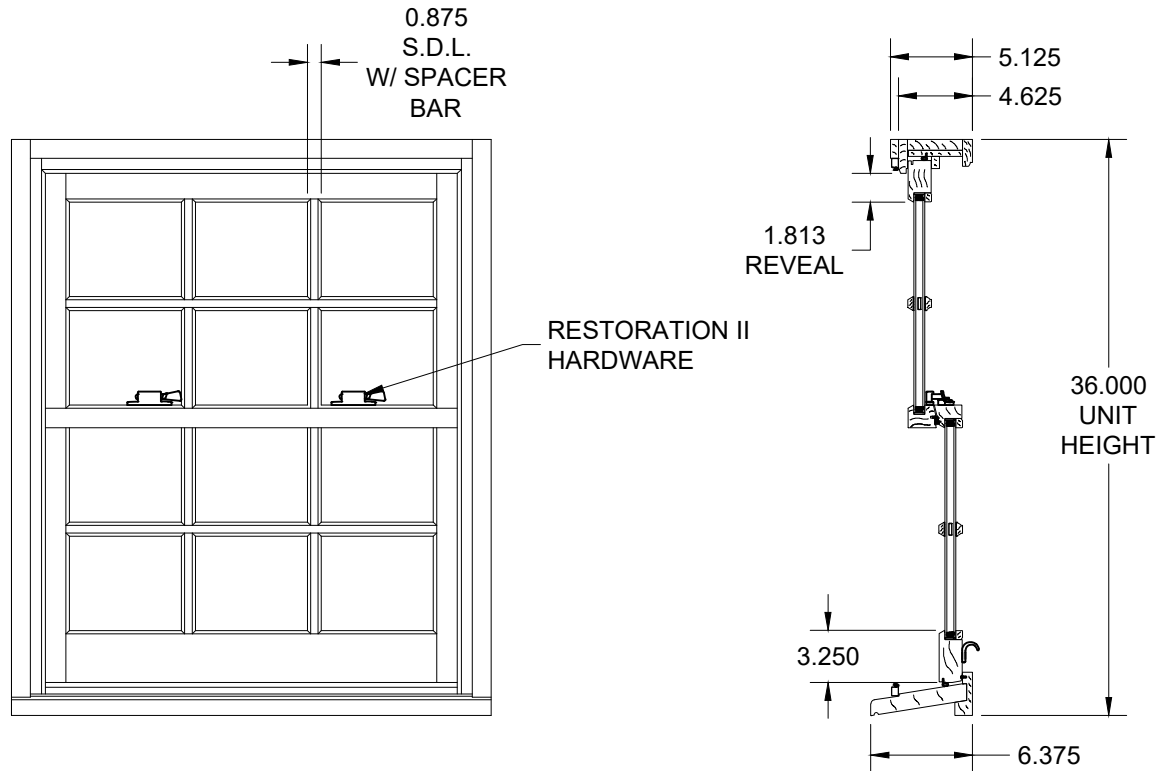
APPROVED

Montgomery County

Historic Preservation Commission

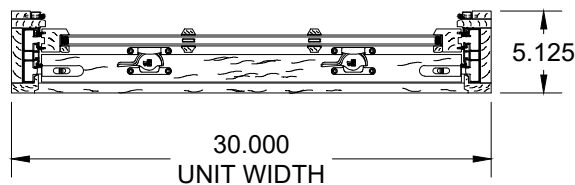
Karen B. Smith

Attachment No.2



REVIEWED

By Laura DiPasquale at 2:20 pm, Dec 12, 2025



APPROVED

Montgomery County
Historic Preservation Commission

Karen Benoit

QUOTE #: SQBJ001104-1

LINE #: 7

QTY: 1

ALL WOOD / NO cPVC

MY SIGNATURE BELOW INDICATES MY APPROVAL
OF DESIGN AND DIMENSIONS AS SHOWN.
I AUTHORIZE PRODUCTION OF SAME.

CUSTOMER: _____

BY: _____

DATE: _____

THE INFORMATION CONTAINED IN THIS DRAWING IS THE
SOLE PROPERTY OF TRIMLINE WINDOWS INC. ANY
REPRODUCTION IN PART OR AS A WHOLE WITHOUT THE
WRITTEN PERMISSION OF TRIMLINE WINDOWS INC. IS
PROHIBITED.



DESCRIPTION:

EW300

CUSTOMER:

SUPREME ALUMINUM

SIZE: A

SCALE:

3/4" = 1'-0"

PROJECT:

DRAWN BY:

A.F.

DATE:

11.10.25

DWG #:

A-4150-G

Quote Form



TW PERRY - SILVER SPRING
9015 BROOKVILLE ROAD
SILVER SPRING MD 20910
301-652-2600



Project Information (ID #9824249 Revision #14292427)

[Hide](#)

Project Name: Juan 301-408-8302

Quote Date: 11/19/2025

Customer:

Submitted Date:

Contact Name:

PO#: QQ000

Phone (Main):

Phone (Cell):

Sales Rep Name: Erik Valencia

Customer Type:

Salesperson:

Terms:

Delivery Information

[Hide](#)

Shipping Contact:

Comments:

Shipping Address:

City:

State:

Zip:

Unit Detail

[Hide All Configuration Options](#)

Item: 0001: Ext 36" x 80" F2044 / F37743 RHI 6 9/16" FrameSaver

Location:

Quantity: 1



Fir 36"x80" Single Door w Transom

2,260.35

Exterior View

REVIEWED

By Laura DIPasquale at 2:20 pm, Dec 12, 2025

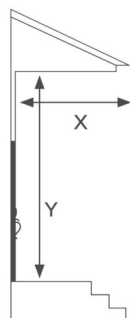
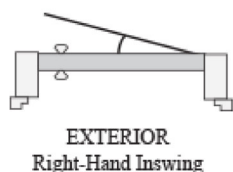
APPROVED

Montgomery County

Historic Preservation Commission

Karen Benoit

Configuration Options [Hide](#)



$X \geq Y / 2$

Overhang
Requirement

- **Product Category:** Exterior Doors
- **Manufacturer:** Reeb - Wood Exterior
- **Product Type:** Exterior
- **Region:** East
- **Product Material:** Standard Series Wood
- **Material Type:** Fir
- **Configuration (Units viewed from Exterior):** Single Door w Transom
- **Factory Finish Option:** No
- **Slab Width:** 36"
- **Slab Height:** 80"
- **Product Style:** Panel
- **Raised Molding:** None
- **Glass Type:** Panel (No Glass)
- **Panel Type:** 3/4" Double Hip Raised
- **Model:** F2044
- **Transom Type:** Rectangular Sash Set
- **Transom Height:** 13 1/2"
- **Transom Width:** 36"
- **Transom Glass Type:** Clear
- **Transom Glass Style:** Multi-Lite
- **Transom Lite Pattern:** 3LT
- **Transom Insulation:** Insulated Glass
- **Transom Model:** F37743
- **Handing:** Right Hand Inswing
- **Frame Material:** FrameSaver
- **Jamb Depth:** 6 9/16"
- **Casing/Brickmould Pattern:** None
- **Hinge Type:** Radius Corner Ball Bearing
- **Hinge Brand:** Reeb
- **Hinge Finish:** US15 Satin Nickel
- **Sill:** Composite Adjustable
- **Sill Finish:** Mill Finish w Light Cap
- **Lock Option:** None
- **Bore:** Double Lock Bore 2-3/8" Backset
- **Strike Jamb Prep:** Schlage/Baldwin Standard Prep
- **Weatherstrip Type:** Compression
- **Weatherstrip Color:** White
- **Custom Height Option:** No
- **Kick Plate:** None
- **Door Viewer:** None
- **Mail Slot:** None
- **Sill Cover:** No
- **Rough Opening Width:** 38 1/2"
- **Rough Opening Height:** 96"
- **Total Unit Width(Includes Exterior Casing):** 37 5/8"
- **Total Unit Height(Includes Exterior Casing):** 95 1/2"

REVIEWED

By Laura DiPasquale at 2:20 pm, Dec 12, 2025

APPROVED

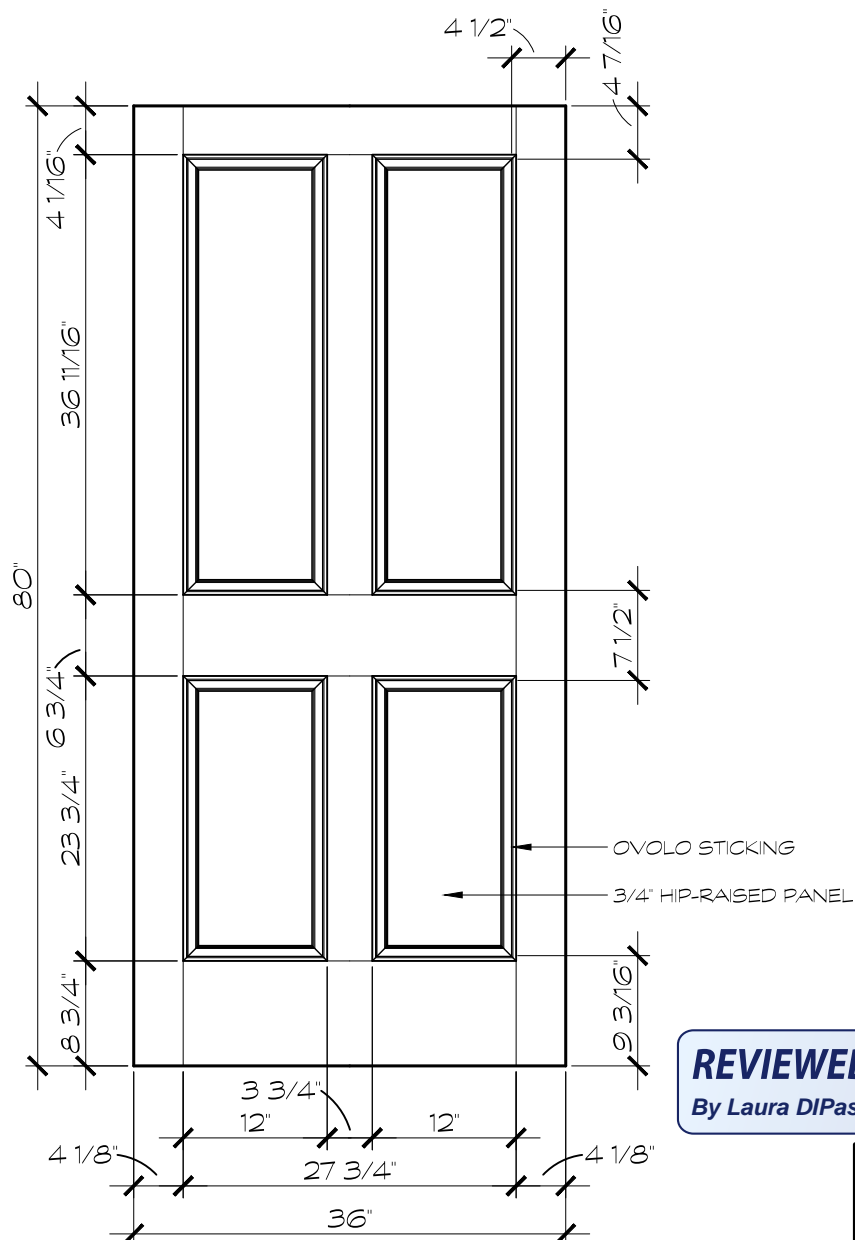
Montgomery County

Historic Preservation Commission

Karen Benoit

Item Total: \$ 2,260.35

Item Quantity Total: \$ 2,260.35



REVIEWED

By Laura DiPasquale at 2:20 pm, Dec 12, 2025

APPROVED

Montgomery County

Historic Preservation Commission

Karen Benoit

F2044

NOTE:

DRAWING DEPICTED AS VIEWED FROM EXTERIOR
STICKING IS NOT INCLUDED IN STILE & RAIL DIMENSIONS
DRAWINGS ARE FOR GENERAL REFERENCE ONLY AND
MAY NOT BE BUILT TO THE EXACT DETAIL SHOWN

DOOR: 2044



PROPOSED DOOR UNIT FOR
REEB MILLWORK CORP.

1000 MALONEY CIRCLE
BETHLEHEM, PENNSYLVANIA 18015
JOB:

DWG. #F2044-3068

DATE: 4/11/2019

DRAWN: K. APGAR



1000 MALONEY CIRCLE, BETHLEHEM, PA 18015
OFFICE: 610-867-6160 / WEB: WWW.REEB.COM

THIS DRAWING AND THE INFORMATION CONTAINED HEREIN IS PROPRIETARY TO REEB MILLWORK CORPORATION AND SHALL NOT BE REPRODUCED, COPIED OR DISCLOSED IN WHOLE OR PART, OR USED FOR MANUFACTURE OR FOR ANY OTHER PURPOSE WITHOUT THE WRITTEN PERMISSION OF REEB MILLWORK CORPORATION.