



HISTORIC PRESERVATION COMMISSION

Marc Elrich
County Executive

Karen Burditt
Chair

December 3, 2025

MEMORANDUM

TO: Rabbiah Sabbakhan
Department of Permitting Services

FROM: Laura DiPasquale
Historic Preservation Section
Maryland-National Capital Park & Planning Commission

SUBJECT: Historic Area Work Permit #1140344– Installation of exterior condensing unit, conduit, and electrical equipment

The Montgomery County Historic Preservation Commission (HPC) has reviewed the attached applications for a Historic Area Work Permit (HAWP). This application was **approved** at the December 3, 2025 HPC meeting.

The HPC staff has reviewed and stamped the attached submission materials.

THE BUILDING PERMIT FOR THIS PROJECT SHALL BE ISSUED CONDITIONAL UPON ADHERENCE TO THE ABOVE APPROVED HAWP CONDITIONS AND MAY REQUIRE APPROVAL BY DPS OR ANOTHER LOCAL OFFICE BEFORE WORK CAN BEGIN.

Applicant: Debra Prybyla
Address: 7016 Sycamore Avenue, Takoma Park

This HAWP approval is subject to the general condition that the applicant will obtain all other applicable Montgomery County or local government agency permits. After the issuance of these permits, the applicant must contact this Historic Preservation Office if any changes to the approved plan are made. Once work is complete, the applicant will contact Laura DiPasquale at 301-495-2167 or laura.dipasquale@montgomeryplanning.org to schedule a follow-up site visit.



Description of Property: Please describe the building and surrounding environment. Include information on significant structures, landscape features, or other significant features of the property:

Description of Work Proposed: Please give an overview of the work to be undertaken:

RECEIVED
By Laura DiPasquale at 12:30 pm, Dec 04, 2025

APPROVED
Montgomery County
Historic Preservation Commission


Work Item 1: _____

Description of Current Condition:

Proposed Work:

Work Item 2: _____

Description of Current Condition:

Proposed Work:

RECEIVED

By Laura DiPasquale at 12:30 pm, Dec 04, 2025

APPROVED

Montgomery County

Historic Preservation Commission

Karen Benoit

Work Item 3: _____

Description of Current Condition:

Proposed Work:

LANDTECH ASSOCIATES, INC.
7307 BALTIMORE AVENUE SUITE 214
COLLEGE PARK, MARYLAND 20740

We hereby acknowledge receipt of a copy of this location drawing.

Date: _____

David E. Blockstein

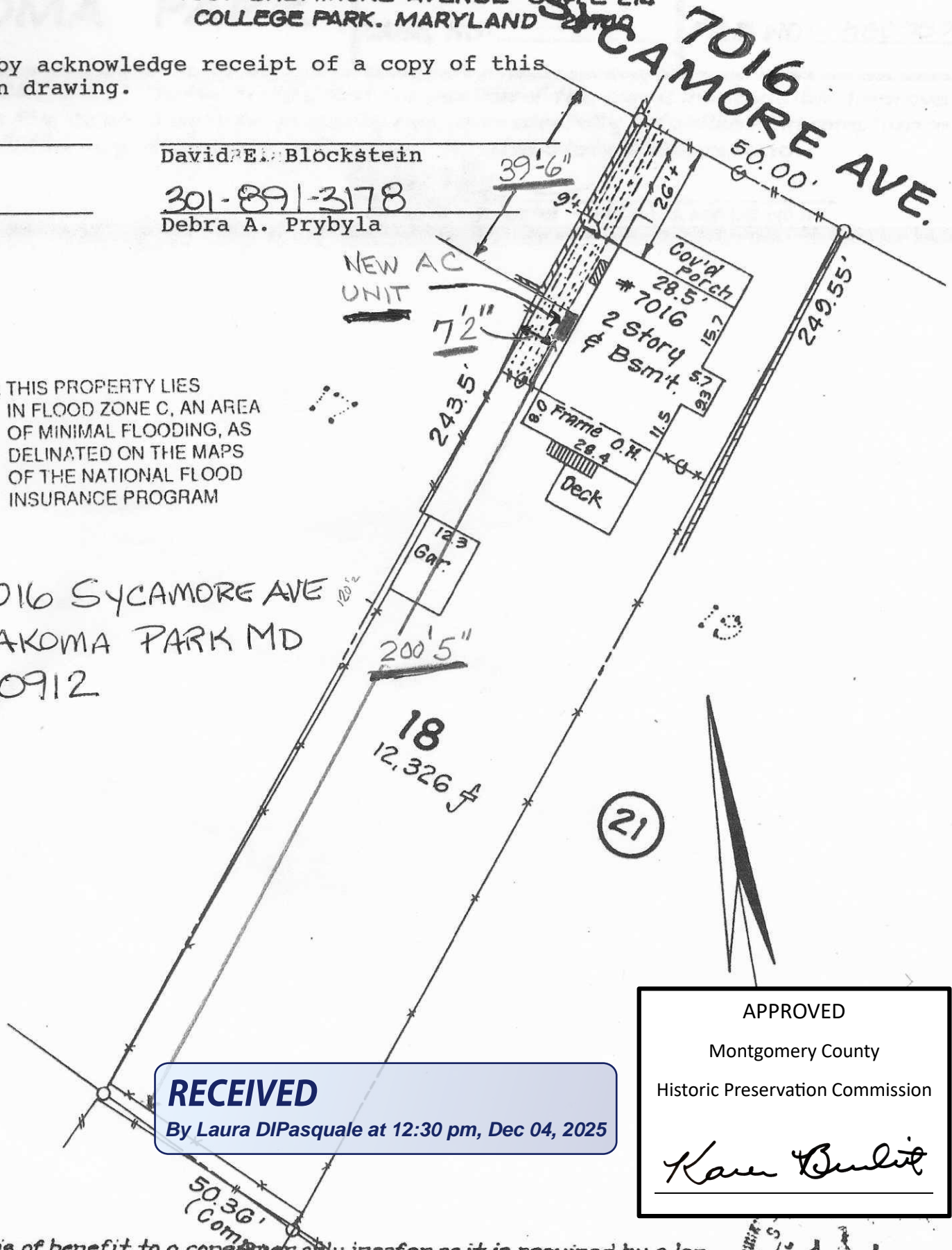
Date: _____

301-891-3178

Debra A. Prybyla

NOTE: THIS PROPERTY LIES
IN FLOOD ZONE C, AN AREA
OF MINIMAL FLOODING, AS
DELINATED ON THE MAPS
OF THE NATIONAL FLOOD
INSURANCE PROGRAM

7016 SYCAMORE AVE
TAKOMA PARK MD
20912



RECEIVED

By Laura DiPasquale at 12:30 pm, Dec 04, 2025

APPROVED

Montgomery County

Historic Preservation Commission

Karen Benoit

NOTES:

The plat is of benefit to a consumer only insofar as it is required by a lender or a title insurance company or its agent in connection with contemplated transfer, financing or re-financing.

Plans/Elevations - Revised

Where line-set
for dining
room mini-
split will
exit house

Around
where line-set
for possible
main bedroom
mini-split would
exit house

Location of
electrical
disconnect

Around where
the electrical
outlet will
be located

If we get
the future
mini-split,
its compressor
would replace
this one, in
this location.

Line-hide to
camouflage
line-set for
dining room
mini-split

Line-hide for
possible mini-
split in main
bedroom

Proposed location
of compressor,
sitting on pad
and risers

Line-set for
possible future
mini-split would
run behind
proposed compressor,
+ over to where
existing
compressor is.



RECEIVED

By Laura DiPasquale at 12:30 pm, Dec 04, 2025

APPROVED

Montgomery County

Historic Preservation Commission

Karen Benoit

MSZ-GX15NL & MUZ-GX15NL
14,000 BTU/H WALL-MOUNTED INDOOR UNIT
14,000 BTU/H INVERTER HEAT PUMP OUTDOOR UNIT



Job Name:

System Reference:

Date:



Indoor Unit.....MSZ-GX15NL

Outdoor Unit.....MUZ-GX15NL



INDOOR UNIT FEATURES

- Dual Barrier Coating: The patented Dual Barrier Coating reduces the collection of contaminants like dust, fibers, smoke, and oil on the inner surface of the heat pump, resulting in optimal airflow and easier maintenance.
- Econo Cool: Econo Cool temporarily and automatically adjusts the airflow based on heat exchanger temperature. The set temperature is increased slightly, which saves energy, while maintaining comfort.
- Filter: Electrostatic Enzyme filter (built-in) that is charged with static electricity and designed to attract and filter charged particles which can include airborne non-living particulates, and Microparticle filter (optional) that removes non-living particulate matter, which can include dust and smoke.
- Multiple control options including: Back-lit screen hand-held Remote Controller (provided with unit), comfort app, third-party interfaces and both wired and wireless controllers
- Multiple fan speed options: Low, Medium, High, Powerful, Auto
- Powerful Mode: Temporarily drops or raises the set point and fan speed in order to quickly bring the room to the desired temperature.
- Quiet operation: Outdoor units are as quiet as a typical conversation, and most indoor units are whisper quiet.
- Slim wall-mounted indoor units provide zone comfort control
- Smart Dry Mode: Improves humidity control with minimal over-cooling of the space
- Smart Set: recalls a preferred preset temperature setting at the touch of a button
- Wi-Fi enabled units pair with the Comfort app for complete control over temperature, fan speeds, modes, schedules, and more.

OUTDOOR UNIT FEATURES

- Blue Fin Coating: An anti-corrosion treatment applied to the aluminum fins of the heat exchanger of the outdoor unit to protect against corrosion caused by salt, sulfur, and other airborne contaminants, especially in coastal and industrial areas.
- INVERTER-driven compressor: An inverter-driven compressor generates the precise capacity needed to maintain a temperature set point.
- Powered by Outdoor Unit: The outdoor unit powers the indoor unit, and should a power outage occur, the system is automatically restarted when power returns

RECEIVED

By Laura DiPasquale at 12:30 pm, Dec 04, 2025

APPROVED

Montgomery County

Historic Preservation Commission

Karen B. Smith

SPECIFICATIONS: MSZ-GX15NL & MUZ-GX15NL

Outdoor Unit	MCA	A	16
	MOCP	A	20
	Fan Motor Full Load Amperage	A	0.71
	Fan Motor Output	W	55
	Airflow Rate Cooling	CFM	1,166
	Airflow Rate Heating	CFM	1,152
	Defrost Method		Reverse Cycle
	Coating on Heat Exchanger (Bluefin, Sea Coast)		Yes, Yes
	Sound Pressure Level, Cooling ¹	dB (A)	49
	Sound Pressure Level, Heating ²	dB (A)	51
	Compressor Type		Twin Rotary
	Compressor Model		SRB140FQHMC
	Compressor Oil [Type // Charge]	Type // oz	RM68EH // 11.8
	External Finish Color		Munsell 3Y 7.8/1.1
	Base Pan Heater		Optional
	Unit Dimensions (W x D x H)	inch x inch x inch [mm x mm x mm]	31-1/2 x 11-1/4 x 21-5/8 [800 x 285 x 550]
	Package Dimensions (W x D x H)	inch x inch x inch [mm x mm x mm]	37 x 15 x 24-1/2 [940 x 380 x 630]
ODU Operating Temp. Range	Unit Weight	lbs [kg]	81 [36.60]
	Package Weight	lbs [kg]	88 [39.90]
	Cooling Intake Air Temp [Maximum / Minimum*]	°FDB	115 / 14
	Cooling Thermal Lock-out / Re-start Temperatures**	°FDB	-1 / 3
	Heating Intake Air Temp [Maximum / Minimum]	°FDB, °FWB / °FDB, °FWB	75, 65 / -5, -6
Refrigerant	Heating Thermal Lock-out / Re-start Temperatures**	°FDB	-14 / -4
	Type		R454B
	Pre-Charged Refrigerant Amount	lbs, oz	2, 4
	Maximum Pre-Charged Piping Length	ft [m]	25 [7.50]
	Additional Refrigerant Charge Per Additional Piping Length	oz/ft	0.22
Piping	Gas Pipe Size O.D. [Flared]	inch [mm]	1/2 [12.70]
	Liquid Pipe Size O.D. [Flared]	inch [mm]	1/4 [6.35]
	Maximum Piping Length	ft [m]	65 [20]
	Maximum Height Difference	ft [m]	40 [12]
	Maximum Number of Bends		10

NOTES

¹Cooling at 95°F (Indoor: 80°F DB, 67°F WB // Outdoor: 95°F DB, 75°F WB)

²Heating at 47°F (Indoor: 70°F DB, 60°F WB // Outdoor: 47°F DB, 43°F WB)

³Heating at 17°F (Indoor: 70°F DB, 60°F WB // Outdoor: 17°F DB, 15°F WB)

⁴Heating at 5°F (Indoor: 70°F DB, 60°F WB // Outdoor: 5°F DB, 4°F WB)

⁵Heating at -5°F (Indoor: 70°F DB, 60°F WB // Outdoor: -5°F DB, -6°F WB)

⁷Heating at -10°F (Indoor: 70°F DB, 60°F WB // Outdoor: -10°F DB, -11°F WB)

* Indoor/Outdoor Unit Operating Temperature Range (Cooling Air Temp [Maximum / Minimum]):

• Applications should be restricted to comfort cooling only; equipment cooling applications are not recommended for low ambient temperature conditions.

** Outdoor Unit Operating Temperature Range (Cooling Thermal Lock-out / Re-start Temperatures; Heating Thermal Lock-out / Re-start Temperatures):

• System cuts out in heating mode and automatically restarts at these temperatures.

RECEIVED

By Laura DiPasquale at 12:30 pm, Dec 04, 2025

APPROVED

Montgomery County

Historic Preservation Commission

Karen Bunkit

OUTDOOR UNIT ACCESSORIES: MUZ-GX15NL

Mini-Split Wire	14 Gauge 4 wire Armored MiniSplit Cable250 ft roll	SW144-250
	14 Gauge 4 wire Armored MiniSplit Cable50 ft roll	SW144-50
	14 Gauge 4 wire MiniSplit Cable250 ft roll	S144-250
	14 Gauge 4 wire MiniSplit Cable50 ft roll	S144-50
Stand	18 Single Fan Stand	QSMS1801M
	24 Single Fan Stand	QSMS2401M
	Condenser Wall Bracket - Stainless Steel Finish	QSWBSS
	Condenser Wall Bracket	QSWB2000M-1
	Outdoor Unit 3-14 inch Mounting Base Pair - Plastic	DSD-400P
	Outdoor Unit Stand 12 High	QSMS1201M
Control/Service Tool	M- & P-Series Maintenance Tool Cable Set	M21EC0397
	Maintenance Tool Interface	PAC-USCMS-MN-1
Mounting Pad	Condensing Unit Mounting Pad 16 x 36 x 3	ULTRILITE1
Hail Guards	Hail Guard	HG-B4
Snow/Rain Diverter	SnowRain Diverter	SRD-1
Air Outlet Guide	Air Outlet Guide	MAC-881SG-E
Optional Defrost Heater	Base Heater	MAC-640BH-U
	Base Heater	MAC-650BH-U
Drain Socket	Drain Socket	MAC-871DS
NOTES		

RECEIVED

By Laura DIPasquale at 12:30 pm, Dec 04, 2025

APPROVED

Montgomery County

Historic Preservation Commission

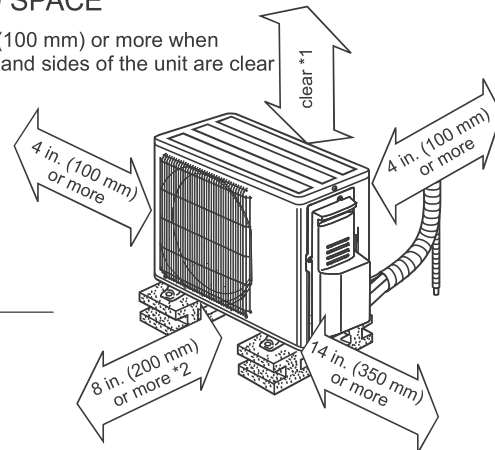
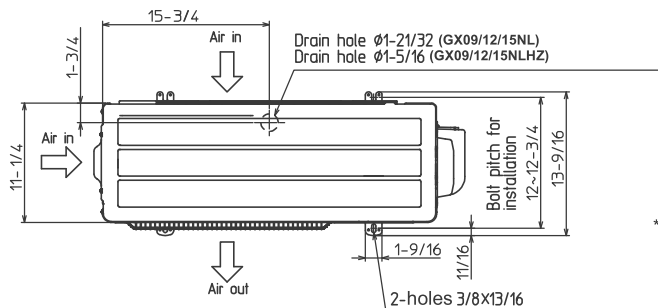
Karen Benoit

OUTDOOR UNIT DIMENSIONS: MUZ-GX15NL

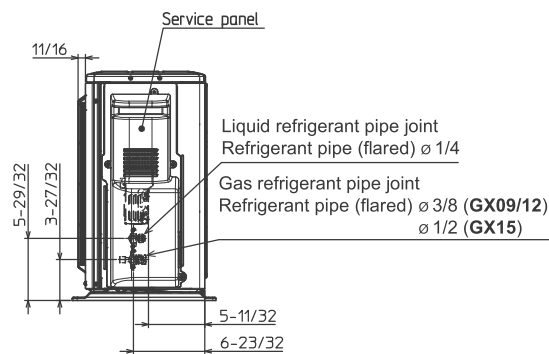
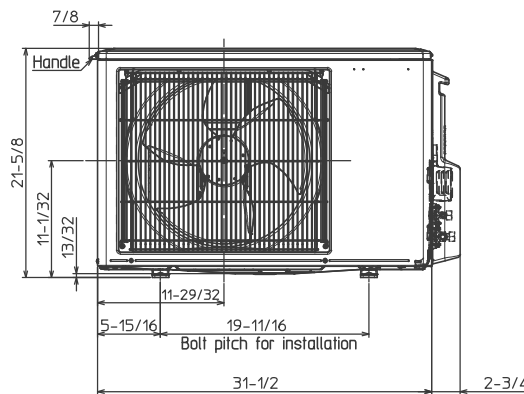
MUZ-GX09NL-U1
 MUZ-GX12NL-U1
 MUZ-GX15NL-U1
 MUZ-GX09NLHZ-U1
 MUZ-GX12NLHZ-U1
 MUZ-GX15NLHZ-U1
 MUY-GX09NL-U1
 MUY-GX12NL-U1
 MUY-GX15NL-U1

REQUIRED SPACE

*1 4 in. (100 mm) or more when front and sides of the unit are clear



*2 When any 2 sides of left, right and rear of the unit are clear



MUZ-GX09/12NL MUZ-GX09/12NLHZ
 MUY-GX09/12NL

REFRIGERANT PIPE JOINT	LIQUID REFRIGERANT PIPE	FLARED 1/4"
	GAS REFRIGERANT PIPE	FLARED 3/8"

MUZ-GX15NL MUZ-GX15NLHZ
 MUY-GX15NL

REFRIGERANT PIPE JOINT	LIQUID REFRIGERANT PIPE	FLARED 1/4"
	GAS REFRIGERANT PIPE	FLARED 1/2"

RECEIVED

By Laura DiPasquale at 12:30 pm, Dec 04, 2025

APPROVED

Montgomery County

Historic Preservation Commission

Karen B. Smith

Photos of Project Location From Two Directions



RECEIVED

By Laura DiPasquale at 12:30 pm, Dec 04, 2025

APPROVED

Montgomery County

Historic Preservation Commission

Karen Benoit