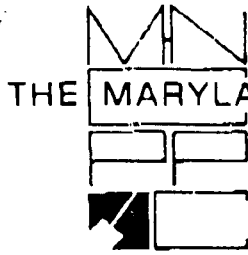


8/16/95 10426 Fawcett Street
(Staff Review) Kensington H.D.



THE MARYLAND-NATIONAL CAPITAL PARK AND PLANNING COMMISSION
8787 Georgia Avenue • Silver Spring Maryland 20910-3760

August 15, 1995

Mr. George Miller
Mr. Ed Dabolt
Toepfer Construction Co., Inc.
1101 Ritchie Road
Capitol Heights, MD 20743

RE: 10426 Fawcett Street, Kensington Historic District

Dear Messrs. Miller and Dabolt:

Thank you for meeting with me today at the above property to look at the fire damage sustained there. The building has been stabilized; the roof is closed back in, and the rear door and window openings are secured with plywood. I was sorry to see that all but one of the original windows were destroyed, but I was glad to see that the damage on the exterior is minimal and the building can be rehabilitated. I understand that the owners are working as quickly as possible to move their business back into the site and you cannot get a building permit without the prior approval of this office.

After speaking with my supervisor, Gwen Marcus, we have agreed that this is an emergency situation, and you will not have to apply for a Historic Area Work Permit (HAWP) if you will do the following:

- 1) Rehabilitate the existing 6/6 double-hung wood window on the front facade;
- 2) Replicate the existing double-hung 6-light sash for the missing sash on the front facade only;
- 3) Install Marvin Magnum (or approved equal) 6/6 wood windows with insulating glass with simulated divided lites at all seven side windows. These new windows will match the individual lite size (glass area) of the original windows, but will not replicate the existing muntins of the original windows (as seen on the front facade);
- 4) Clean the soot off the building with low water pressure (start with 60 psi) and a scrub brush; and
- 5) match the existing mortar to the maximum extent possible in hardness, texture and color.

APPROVED
Montgomery County
Historic Preservation Commission

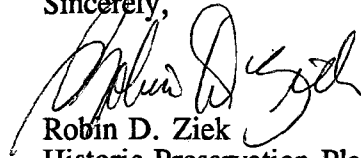
[Handwritten Signature]
8/16/95

A-4
10F3

This office will confirm the above agreement when you present one permit set for our review and stamp (our standard procedure). You will then be able to take that set up with you when you apply for the building permit and proceed with the reconstruction of 10426 Fawcett Street in the Kensington Historic District under the conditions listed above.

If I can be of further assistance, please do not hesitate to call me at (301) 495-4570.

Sincerely,

A handwritten signature in black ink, appearing to read "Robin D. Ziek". The signature is fluid and cursive, with a large initial "R" and "Z".

Robin D. Ziek
Historic Preservation Planner

cc: Loretta Shapiro, Office of the County Attorney

WOOD MAGNUM DOUBLE, SINGLE & TRIPLE HUNG

SPECIFICATIONS



Frame: Finger jointed edge-glued pine with clear pine interior liners kiln dried to a moisture content no greater than 12 percent at time of fabrication. Water repellent, preservative treated in accordance with ANSI/NWWDA I.S.4. Frame Thickness: 1-1/16 inches (43 mm) at side jambs, 11/16 inch (17 mm) at head jamb, 1-5/16 inches (33 mm) at sill. Frame Width: 5-1/2 inches (140 mm) for double hungs and single hungs; 7-13/16 inches (198 mm) for triple hungs.

Sash: Clear pine kiln dried to a moisture content no greater than 12 percent at time of fabrication. Water repellent, preservative treated in accordance with ANSI/NWWDA I.S.4. Sash Thickness: 1-3/4 inches (44 mm) for operable units; [1-3/4 inches (44 mm)] [2-1/2 inches (64 mm)] for picture units. Corners slot and tenoned. [Finger pulls on bottom rails.]

Finish:

- A. Exterior: [Treated bare wood] [Acrylic latex prime coat, White] [Factory finish: [White] [Bahama Brown] [Pebble Gray] [Bronze] [Factory finish custom color as selected by Architect] [Factory finish color collection as selected by Architect]].
- B. Interior: [Treated bare wood] [Acrylic latex prime coat, White].

Hardware:

- A. Balancing System: Double coil spring block and tackle system with nylon cord and metal clutch.
- B. Track: Vinyl extrusion with foam backing. Color: Beige [White].
- C. Lock: High pressure zinc die-cast cam lock and keeper. Two locks on glass sizes of 36 inches (914 mm) and wider. Finish: [Phosphate coated and electrostatically painted [Bronze] [White] baked enamel] [Plated brass].
- D. Sash Lift: [None] [High pressure zinc die-cast with finish matching lock].

Weatherstripping: Continuous, leaf-type weatherstrip on head jamb part stop which seals against top sash; dual durometer double leaf weatherstrip at check rail; bulb type dual durometer weatherstrip at bottom rail. Leaf type weatherstrip at vinyl track.

Jamb Extensions: Available for various wall thicknesses. Factory installed.

Screens: Factory installed. 18 by 16 mesh. Screen cloth: Charcoal fiberglass [Charcoal aluminum wire] [Black aluminum wire] [Bright aluminum wire] [Bright bronze wire]. 3/8 inch by 15/16 inch (10 mm by 24 mm) aluminum frame. Frame Finish: [White] [Bahama Brown] [Pebble Gray] [Bronze] [Match exterior window frame finish].

Removable Grilles: [3/4 inch by 15/32 inch (19 mm by 12 mm)] [1-1/8 inches by 15/32 inch (29 mm by 12 mm)] pine.

- A. Pattern: [Rectangular] [Custom lite layout].

Simulated Divided Lites (SDL): [7/8 inch (22 mm)] [1-1/8 inches (29 mm)] wide pine bars adhered to glass with double coated acrylic foam tape.

- A. Pattern: [Rectangular] [Custom lite layout].

Glazing: Select quality complying with FS DD-G-451D. Insulating glass SIGMA/IGCC certified to performance level CBA when tested in accordance with ASTM E774.

A. Glazing Method:

1. Single Glazed
2. Single Glazed with Energy Panel
3. Single Glazed with Authentic Divided Lites
4. Single Glazed with Authentic Divided Lites and Energy Panel
5. Insulating Glass [Altitude Adjusted]
6. Insulating Glass with Authentic Divided Lites [Altitude Adjusted]
7. Insulating Glass with Simulated Divided Lites [Altitude Adjusted]

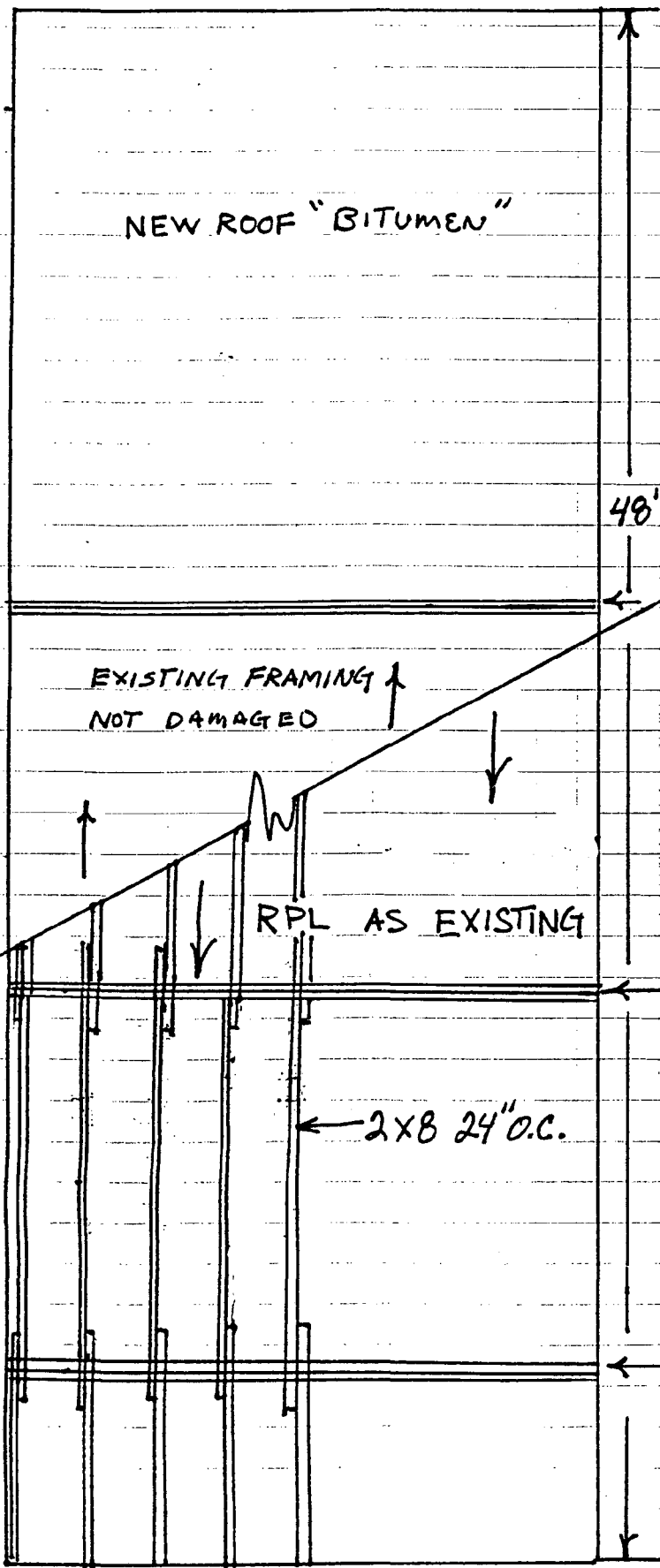
B. Glass Type:

1. Clear
2. Bronze
3. Gray
4. Solarcool Bronze
5. Northern Low E
6. Southern Low E

APPROVED
Montgomery County
Historic Preservation Commission

[Signature] 5/16/95
A-4
20F3

18'



10426 FAWCETT ST.
KENSINGTON, MD
20795

48'

DBL 2x10

EXISTING FRAMING
NOT DAMAGED

3/4" DECK (PLY)

ALL FRAMING SET
IN MASONRY AT EXTERIOR
WALLS

RPL AS EXISTING

DBL 2x10

2x8 24" O.C.

DBL 2x8

A-4
3 of 3

MA VERISKUL VIA ARCHITECT PLANNER
LEAS 3300 WOODBRIDGE ROCKVILLE MARYLAND 20853 (301) 477-6000

EMERGENCY LOCKSMITH INC.
INTERIOR RENOVATION
10425 FAWCETT STREET
KENSINGTON MARYLAND 20795

FIRST FLOOR PLAN

Date 2/6/87
Scale 1/4" = 1'-0"
Drawn KV
Job
Sheet
A-1
Of Sheets

FINISH SCHEDULE

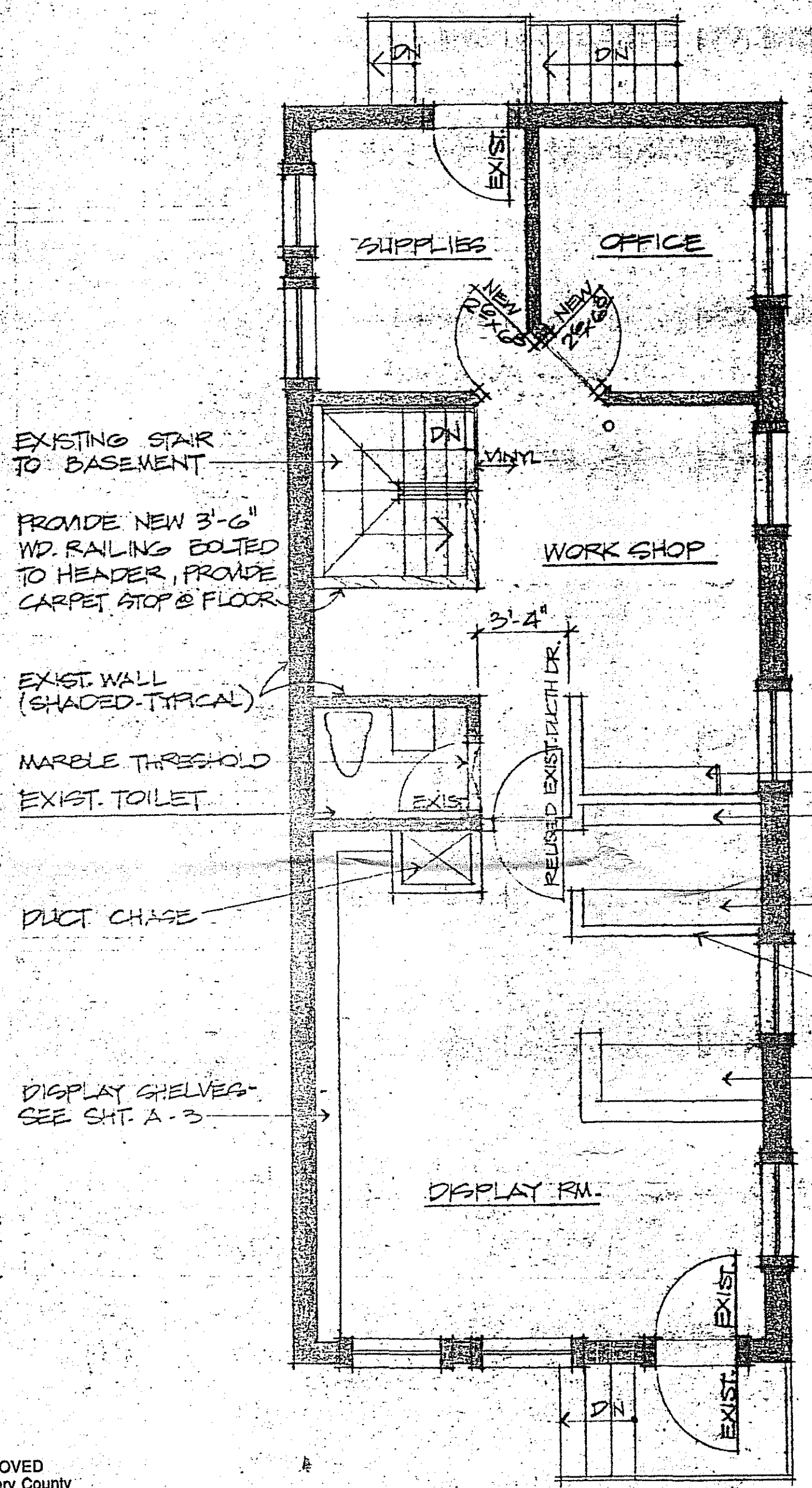
RM. NAME	FLOOR	BASE	WALL	CEILING	REMARKS
DISPLAY RM.	CARPET	WOOD	WALL COVERG	*ACOUST. TILE TYPE 1	*# PAINTED GP. BD.
EXIST. TOILET	VINYL	WOOD	WALL COVERG	PAINTED GP. BD.	
EXIST. STAIR	CARPET	WOOD	PAINTED GP. BD.	ACOUST. TILE TYPE?	
WORK SHOP	VINYL	WOOD	PAINTED EXIST.		
OFFICE	CARPET	WOOD	*WOOD PANELING		*NEW
SUPPLIES	VINYL	WOOD	*WOOD PANELING		*NEW

FINISH NOTES

1. ACOUST. TILE TYPE 1 SHALL BE "ARMSTRONG" 24"x24" "REGISTRY", PATTERN "B", SUSPENDED PER MANUFACTURER'S RECOMMENDATION.
2. ACOUST. TILE TYPE 2 SHALL BE "ARMSTRONG" 24"x48" "FASURE", SUSPENDED PER MANUFACTURER'S RECOMMENDATION.
3. VINYL FLOOR SHALL BE "ARMSTRONG" "CUSTOM CORLON" COLOR TO BE SELECTED BY OWNER.
4. CARPET & WALL COVERING BY OWNER.
5. PROVIDE NEW 3/8" PLYWOOD UNDERLAYMENT ON ENTIRE FIRST FLOOR.

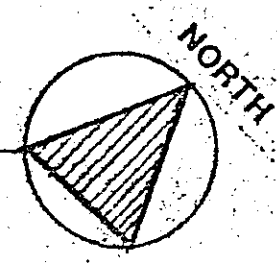
- NOTE:
- 1.) WINDOW SCHEDULE
 - 2.) EXTERIOR FINISH PREPARATION
 - 3.) ROOF FRAMING
- SEE ATTACHMENT A-4

FIRE DAMAGE REPAIR
NOTE: NO CHANGES TO STRUCTURE
RE BUILD AS SHOWN
JULY, 1995



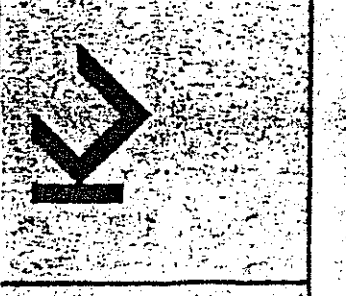
APPROVED
Montgomery County
Historic Preservation Commission
[Signature] 5/16/88

FIRST FLOOR PLAN
SCALE: 1/4" = 1'-0"



REVISIONS	BY

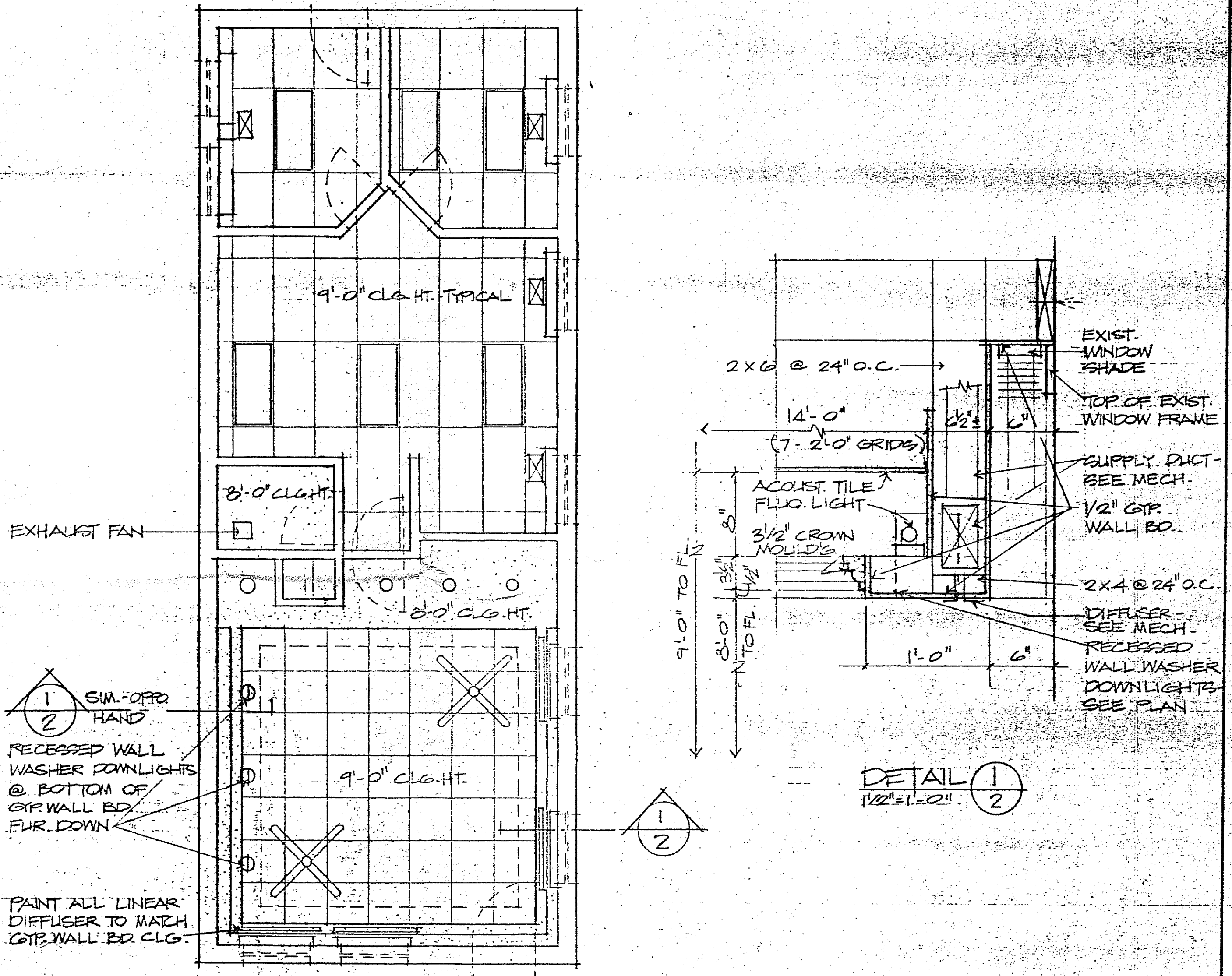
KVAI VORITSKIL AIA
ARCHITECT PLANNER
1555 BIRCHWOOD TERRACE
ROCKVILLE, MARYLAND 20853
(301) 871-9890



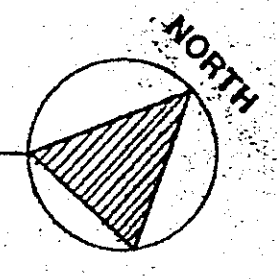
EMERGENCY LOCKSMITH INC.
INTERIOR RENOVATION
10426 FAWCETT STREET
KENSINGTON, MARYLAND 20795

REFLECTED CEILING PLAN

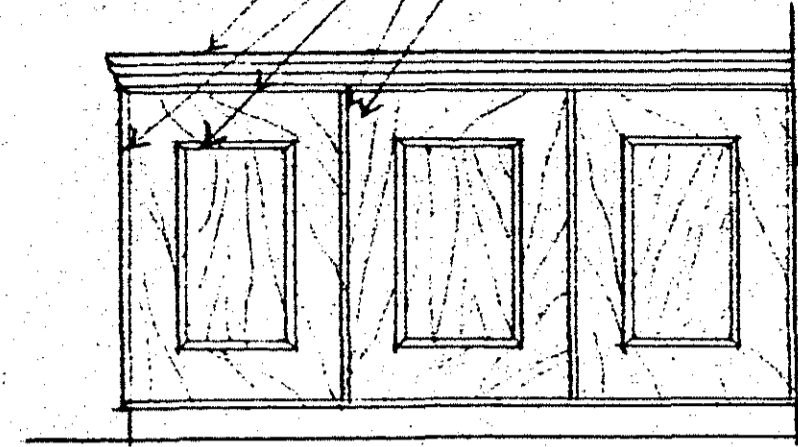
Date: 2/6/87
Scale: 1/4" = 1'-0"
Drawn: KV
Job:
Sheet:
A-2
Of: Sheets



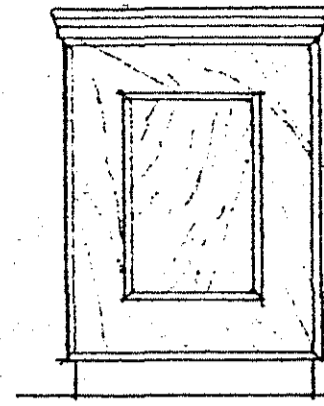
REFLECTED CEILING PLAN
SCALE: 1/4" = 1'-0"



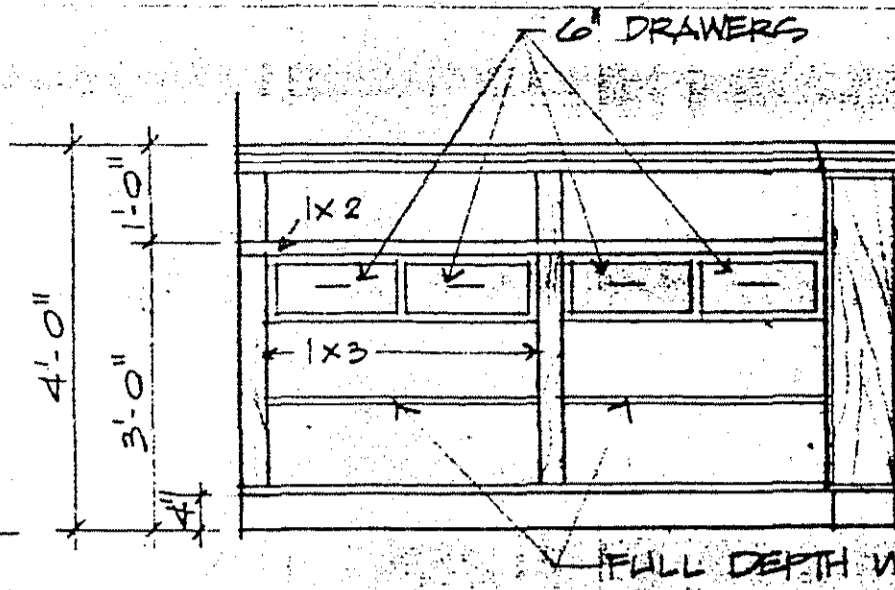
4" CROWN MOULDING - TYPICAL
 AROUND TOP COUNTER
 3/4" HALF ROUND - TYPICAL
 3/4" PLYWOOD SELECTED
 CLEAR GRADE - TYPICAL



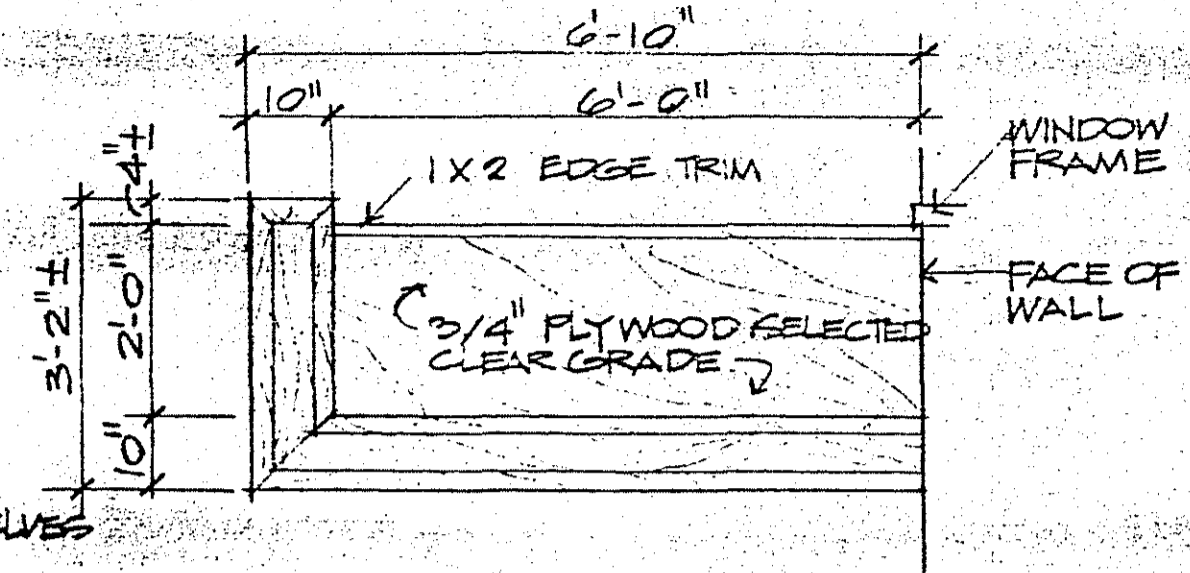
FRONT ELEVATION



SIDE ELEVATION



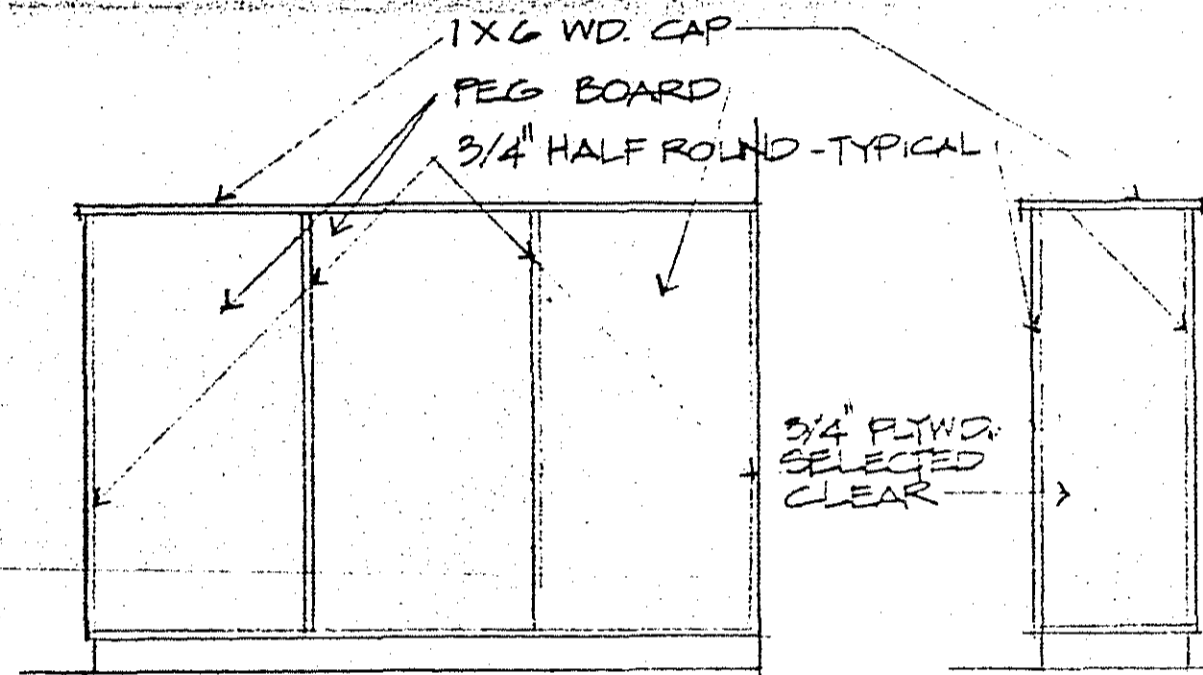
REAR ELEVATION



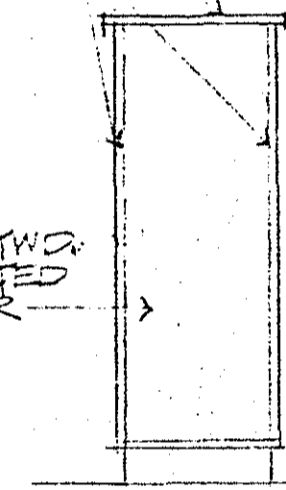
PLAN

CUSTOMER COUNTER DETAILS
 SCALE: 1/2" = 1'-0"

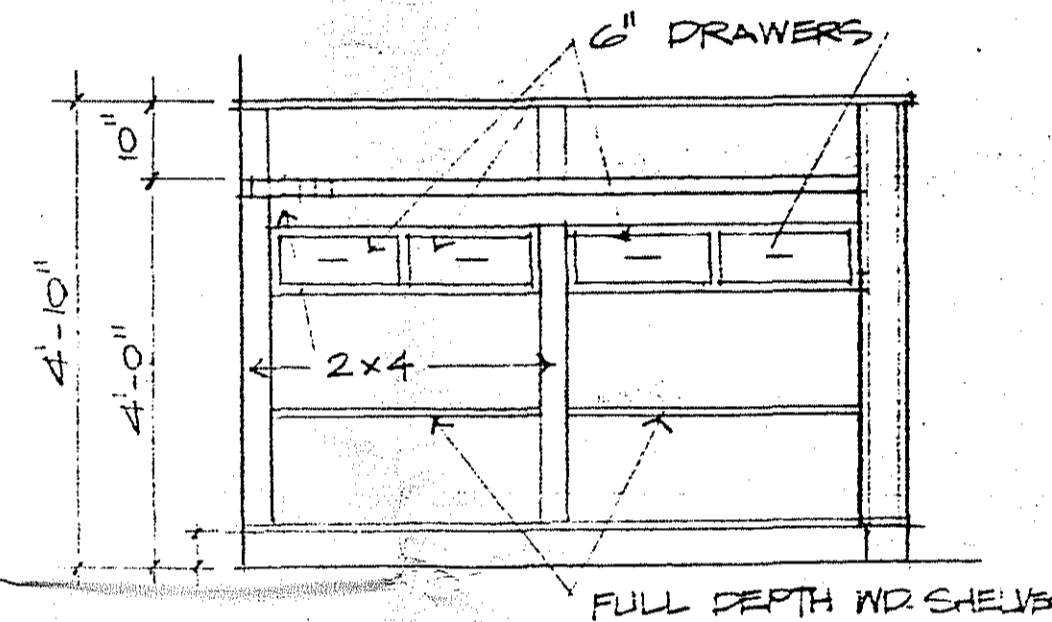
NOTE: STAIN ALL WOOD AS SELECTED BY OWNER.



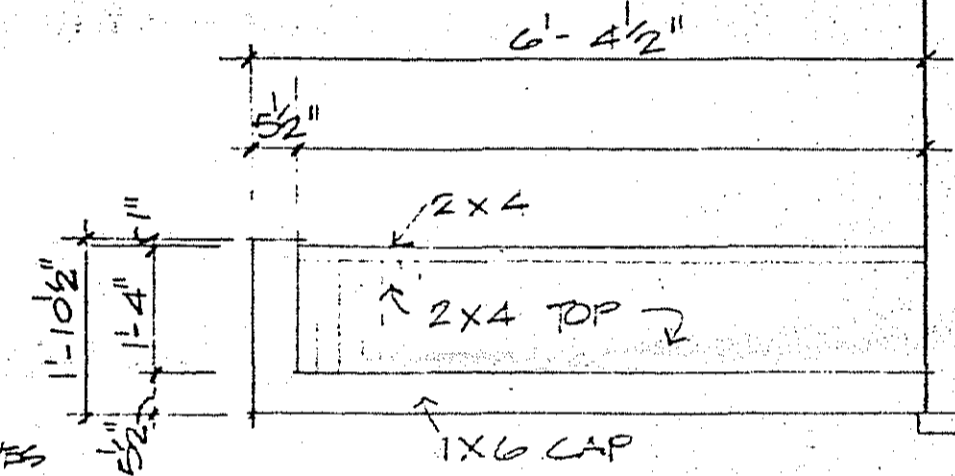
FRONT ELEVATION



SIDE ELEVATION

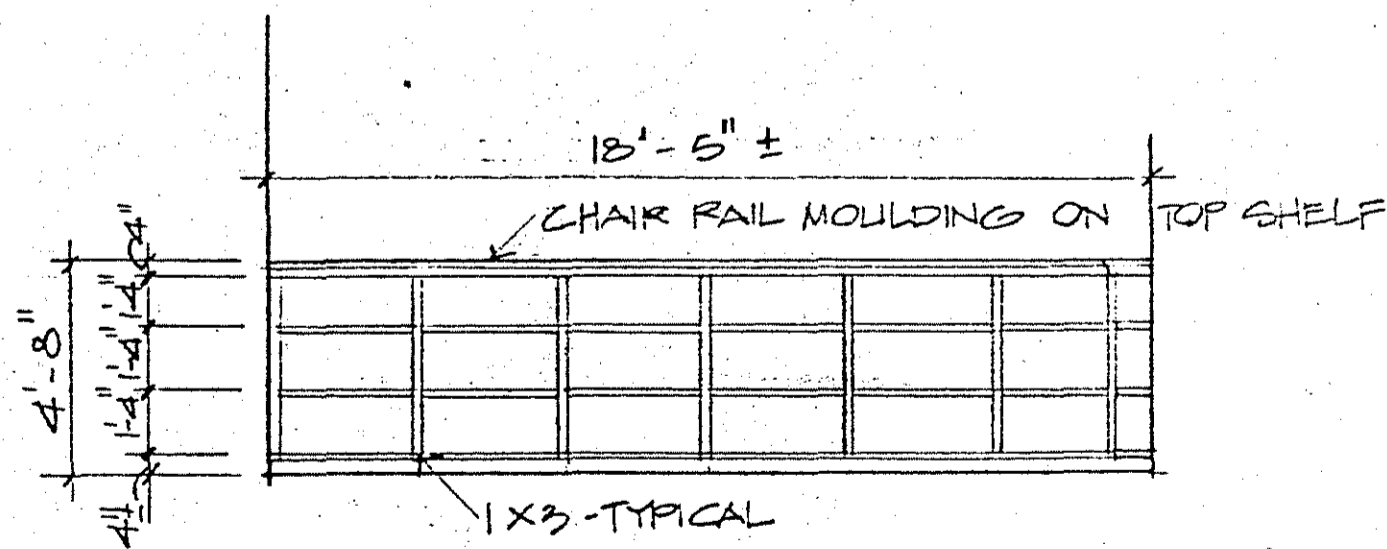


REAR ELEVATION

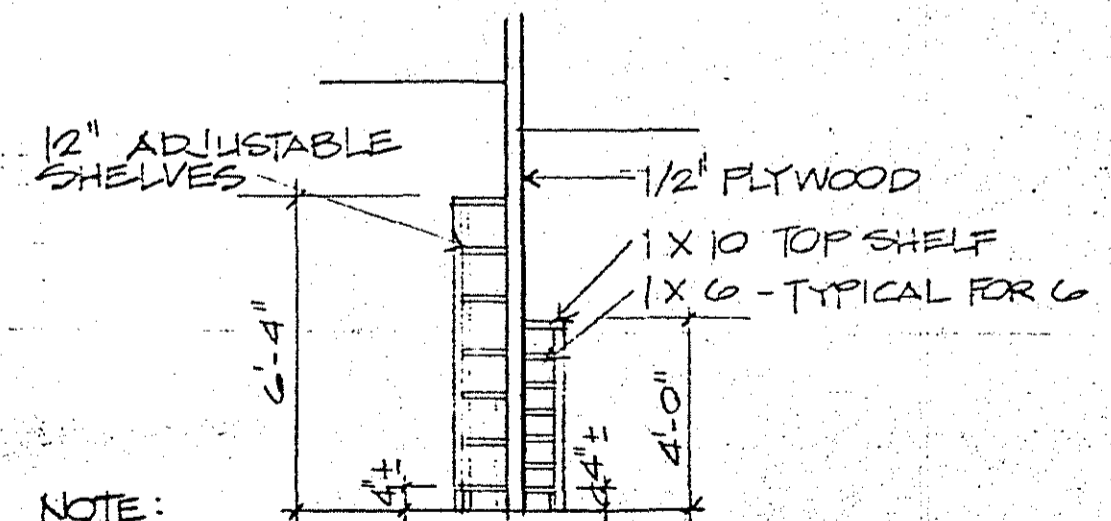


PLAN

WORK BENCH DETAILS
 SCALE: 1/2" = 1'-0"



DISPLAY SHELVES - ELEVATION
 SCALE: 1/4" = 1'-0"



NOTE:
 PROVIDE VERTICAL SUPPORT FOR ALL SHELVES
 @ 3'-0" ± & END CLOSURE PANEL AS REQ'D.

KEY BOX SHELVES - SECTION
 SCALE: 1/4" = 1'-0"

REVISIONS	BY

KIAT VORISKUL AIA
 ARCHITECT
 14555 BRIARWOOD TERRACE
 ROCKVILLE, MARYLAND 20855
 (301) 871-8920



EMERGENCY LOCKSMITH INC.
INTERIOR RENOVATION
 10426 FAWCETT STREET
 KENSINGTON, MARYLAND 20795

INTERIOR DETAILS

Date	2/6/07
Scale	AS NOTED
Drawn	KV
Job	
Sheet	A-3
Of	Sheets

LEGEND

- 2'x4' LAY-IN LIGHTING FIXTURE 120V/4-F40 RS/CW
- SINGLE LAMP STRIP FIXTURE 120V/1-F-RS/CW LENGTH AS REQUIRED
- 52" CEILING FAN WITH LIGHTS (TYPE TO BE SELECTED BY ARCHITECT)
- RECESSED WALL WASHER 120V/1-100W R40
- RECESSED DOWNLIGHT 120V/1-100W R40
- WALL MOUNT LIGHTING FIXTURE (TYPE TO BE SELECTED BY ARCHITECT)
- WALL MOUNT LIGHTING FIXTURE 120V/2-A19-100W(TOILET)
- EXIT LIGHT CEILING MOUNT-WITH BUILT-IN BATTERY PACK
- CEILING MOUNT SMOKE DETECTOR 120V
- DUPLEX OUTLET 120V/20A GROUNDING TYPE VERIFY HEIGHT PRIOR TO ROUGH-IN
- SINGLE POLE SWITCH 120V/20A (VERIFY HEIGHT)
- THREE WAY SWITCH 120V/20A (VERIFY HEIGHT)
- FOUR WAY SWITCH 120V/20A (VERIFY HEIGHT)
- MOTOR RATED SWITCH
- MOTOR OF SIZE AND CHARACTERISTICS SHOWN
- DISCONNECT SWITCH, VOLTAGE, AMPS, POLE AS NOTED
- PLUGMOLD-OUTLETS 12" ON CENTER 120V/20A LENGTH AS SHOWN (VERIFY HEIGHT)
- BRANCH CIRCUIT HOME RUN TO PANEL AND CIRCUIT INDICATED. SEE PANEL SCHEDULE.

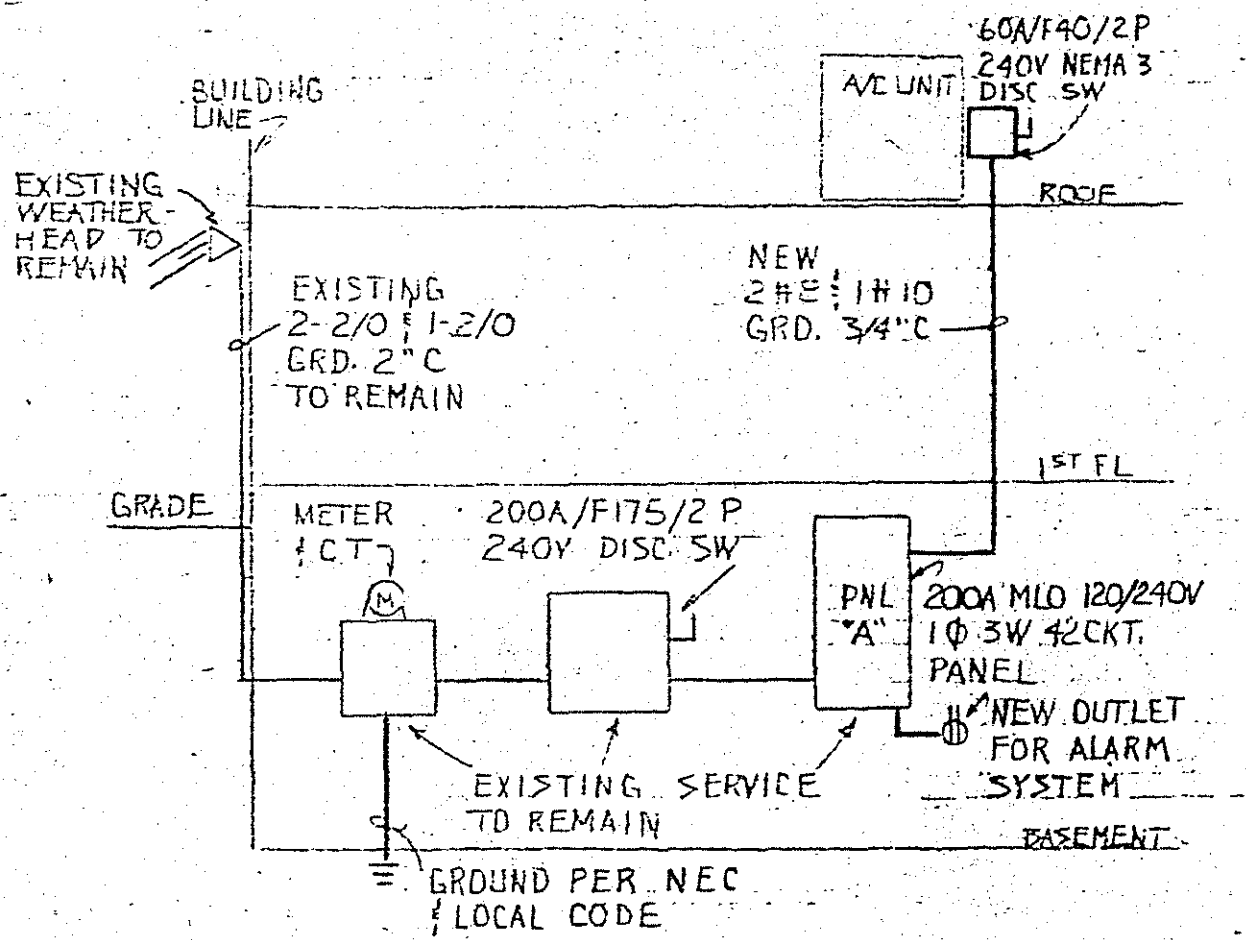
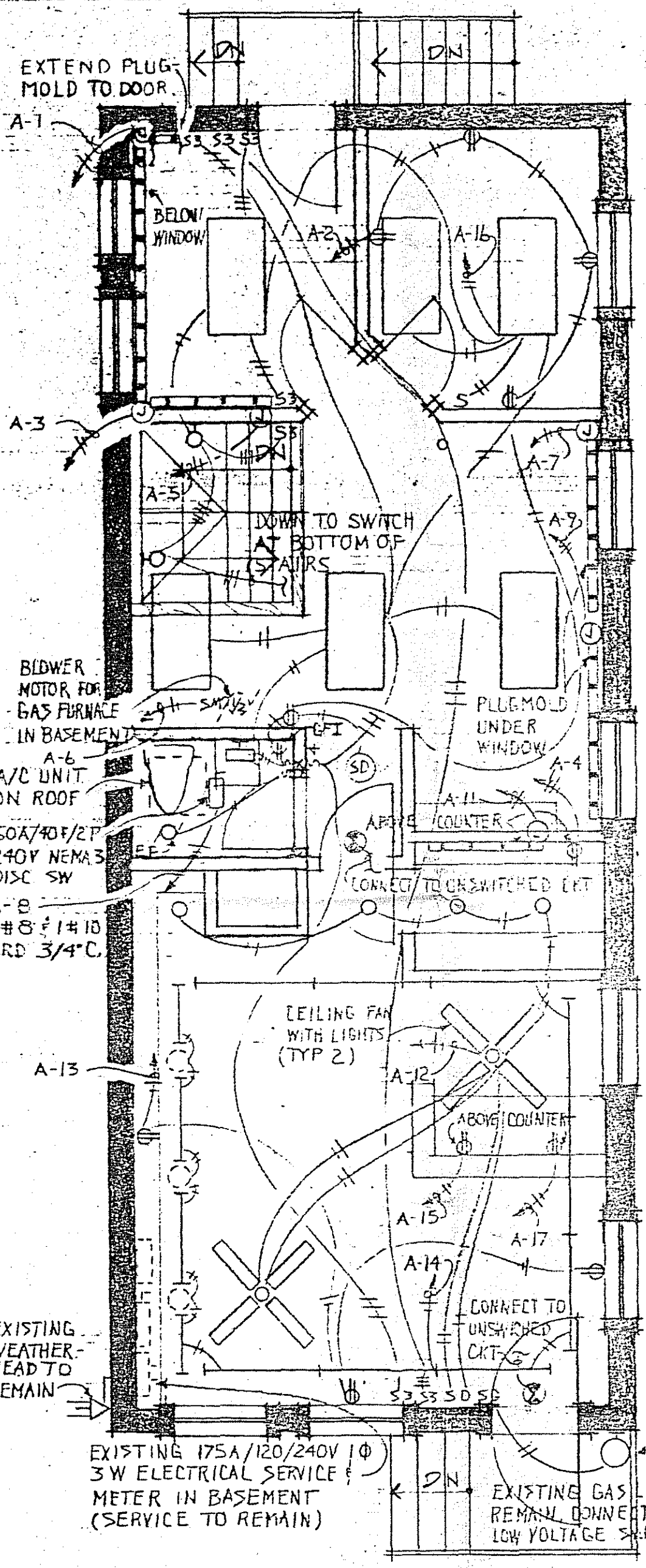
ELECTRICAL NOTES

- 1 ALL BRANCH CIRCUIT WIRE TO BE # 12 COPPER UNLESS SHOWN OTHERWISE
- 2 REMOVE ALL EXISTING UNUSED CIRCUITS BACK TO THE PANEL. REUSE CKT BREAKERS & RECIRCUITS SHOWN ON PANEL SCHEDULE
- 3 CONTRACTOR SHALL VERIFY LOCATION OF EQUIPMENT PRIOR TO ROUGH-IN
- 4 SEE REFLECTED CEILING PLAN FOR EXACT LOCATION OF LIGHTING FIXTURES. ALL SELECTION OF FIXTURES SHALL BE APPROVED BY ARCHITECT.
- 5 COMPLY WITH NEC & ALL LOCAL CODES

PANELBOARD SCHEDULE			
DIRECTORY	AMP	POLE	CKT
PLUGMOLD	20	1	1
			3
			7
			9
			11
DUPLEX OUTLET			13
TASH REGISTER			15
LOTTO MACHINE			17
(EXISTING LIGHT			21
OUTLETS IN			23
BASEMENT)			25
			27
SPACE			

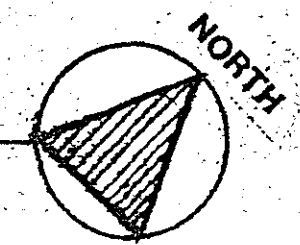
DIRECTORY	AMP	POLE	CKT
DUPLEX OUTLET	20	1	20
GRINDER OUTLET			4
FURNACE MOTOR			6
A/C UNIT			8
			10
CEILING FANS			12
LIGHTS			14
			16
ALARM OUTLET			18
SPARES			22
			24
SPACE			

PANEL NO.	VOLTS	PHASES	MTG SURFACE	LOCATION
A	120/240	1 Ø	3 W, 5H	BASEMENT
MAINS	200A	MLO		



POWER RISER DIAGRAM
NO SCALE

FIRST FLOOR PLAN - ELECTRICAL
SCALE: 1/4" = 1'-0"



KAY VORITSKI, AIA
ARCHITECT
PLANNER
1408 BRANCOFF TERRACE
ROCKVILLE, MARYLAND 20853
(301) 871-8920

EMERGENCY LOCKSMITH INC.
INTERIOR RENOVATION
10426 FAWCETT STREET
KENSINGTON MARYLAND 20795

FIRST FLOOR PLAN - ELECTRICAL

Date	2/6/87
Scale	1/4" = 1'-0"
Drawn	KVP
Job	
Sheet	1
Of	1



1101 RITCHIE ROAD, CAPITOL HEIGHTS, MARYLAND 20743

COMPLETE INSURANCE RESTORATION
MOVING AND STORAGE

Since 1962

1 (800) RING 911

(301) 336-8600

FAX: (301) 499-7863

901-2449
roger
ED DABOLT

George Miller

August 15, 1995

owner can't
do anything until
Pros happens

Pros adds 7 to 8 weeks
to order

(1) Replicate original window on front -
rehabilitate one original window
7 windows as Marvin Magnun.

(2) Replace all windows of Marvin Magnun
as presented -

(junk one original)

- we send detailed
letters - NO

HAWP -

Stuff level:

emergency -

front facade

replicating -

cc. Loretta

Delays

(1) Lead time for order

(2) building permit - need Pros to
get going - HAWP.

Q: Do they need HAWP?
How to expedite?

(check file '87-'90)

FAX over to Ed Dabolt

W



SPECIFICATIONS

Frame: Finger jointed edge—glued pine with clear pine interior liners kiln dried to a moisture content no greater than 12 percent at time of fabrication. Water repellent, preservative treated in accordance with ANSI/NWWDA I.S.4. Frame Thickness: 1–1/16 inches (43 mm) at side jambs, 11/16 inch (17 mm) at head jamb, 1–5/16 inches (33 mm) at sill. Frame Width: 5–1/2 inches (140 mm) for double hungs and single hungs; 7–13/16 inches (198 mm) for triple hungs.

Sash: Clear pine kiln dried to a moisture content no greater than 12 percent at time of fabrication. Water repellent, preservative treated in accordance with ANSI/NWWDA I.S.4. Sash Thickness: 1–3/4 inches (44 mm) for operable units; [1–3/4 inches (44 mm)] [2–1/2 inches (64 mm)] for picture units. Corners slot and tenoned. [Finger pulls on bottom rails.]

Finish:

- A. Exterior: [Treated bare wood] [Acrylic latex prime coat, White] [Factory finish: [White] [Bahama Brown] [Pebble Gray] [Bronze] [Factory finish custom color as selected by Architect] [Factory finish color collection as selected by Architect]].
- B. Interior: [Treated bare wood] [Acrylic latex prime coat, White].

Hardware:

- A. Balancing System: Double coil spring block and tackle system with nylon cord and metal clutch.
- B. Track: Vinyl extrusion with foam backing. Color: Beige [White].
- C. Lock: High pressure zinc die—cast cam lock and keeper. Two locks on glass sizes of 36 inches (914 mm) and wider. Finish: [Phosphate coated and electrostatically painted [Bronze] [White] baked enamel] [Plated brass].
- D. Sash Lift: [None] [High pressure zinc die—cast with finish matching lock].

Weatherstripping: Continuous, leaf-type weatherstrip on head jamb part stop which seals against top sash; dual durometer double leaf weatherstrip at check rail; bulb type dual durometer weatherstrip at bottom rail. Leaf type weatherstrip at vinyl track.

Jamb Extensions: Available for various wall thicknesses. Factory installed.

Screens: Factory installed. 18 by 16 mesh. Screen cloth: Charcoal fiberglass [Charcoal aluminum wire] [Black aluminum wire] [Bright aluminum wire] [Bright bronze wire]. 3/8 inch by 15/16 inch (10 mm by 24 mm) aluminum frame. Frame Finish: [White] [Bahama Brown] [Pebble Gray] [Bronze] [Match exterior window frame finish].

Removable Grilles: [3/4 inch by 15/32 inch (19 mm by 12 mm)] [1–1/8 inches by 15/32 inch (29 mm by 12 mm)] pine.

- A. Pattern: [Rectangular] [Custom lite layout].

Simulated Divided Lites (SDL): [7/8 inch (22 mm)] [1–1/8 inches (29 mm)] wide pine bars adhered to glass with double coated acrylic foam tape.

- A. Pattern: [Rectangular] [Custom lite layout].

Glazing: Select quality complying with FS DD—G—451D. Insulating glass SIGMA/IGCC certified to performance level CBA when tested in accordance with ASTM E774.

A. Glazing Method:

1. Single Glazed
2. Single Glazed with Energy Panel
3. Single Glazed with Authentic Divided Lites
4. Single Glazed with Authentic Divided Lites and Energy Panel
5. Insulating Glass [Altitude Adjusted]
6. Insulating Glass with Authentic Divided Lites [Altitude Adjusted]
7. Insulating Glass with Simulated Divided Lites [Altitude Adjusted]

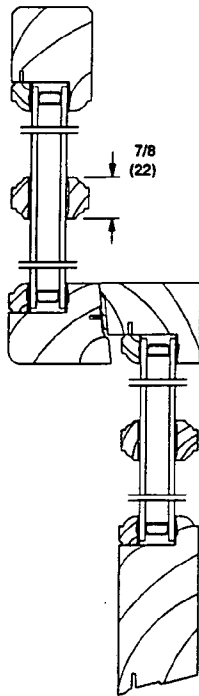
B. Glass Type:

1. Clear
2. Bronze
3. Gray
4. Solarcool Bronze
5. Northern Low E
6. Southern Low E

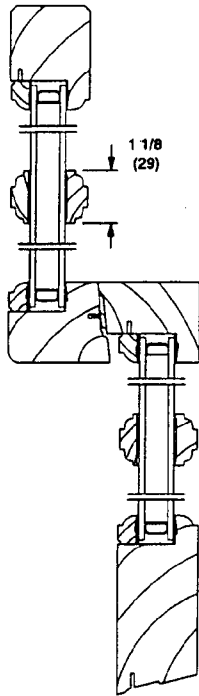
WOOD MAGNUM DOUBLE HUNG

GLAZING OPTIONS

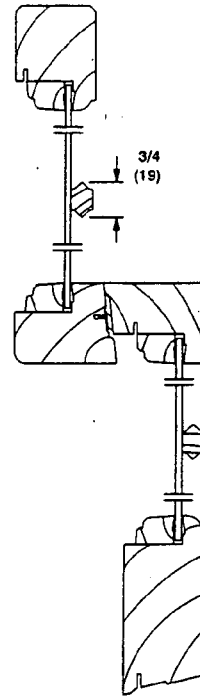
SCALE: 3" = 1' 0"



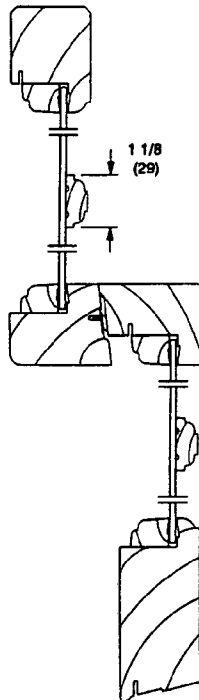
Insulating
with 7/8" SDL



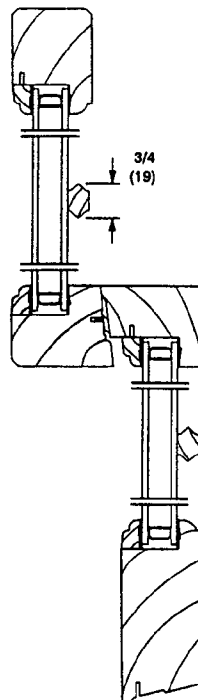
Insulating
with 1 1/8" SDL



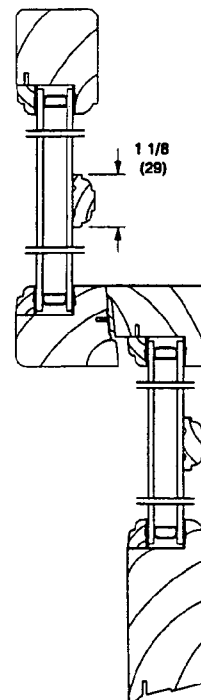
Single Glaze
with 3/4" Grille



Single Glaze
with 1 1/8" Grille



Insulating
with 3/4" Grille

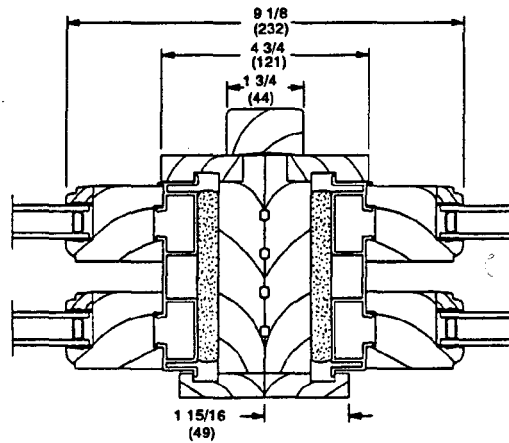
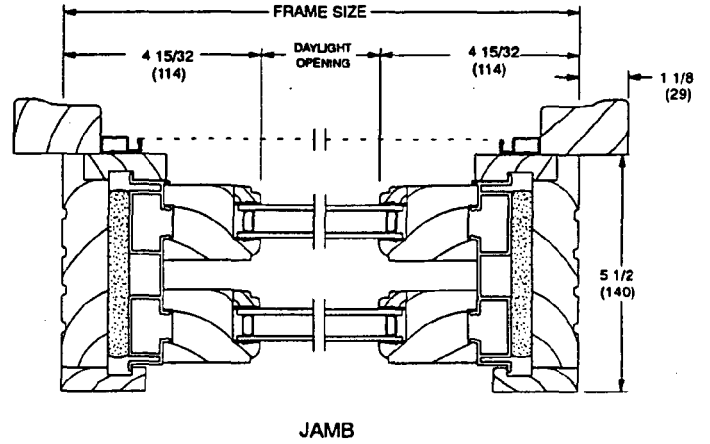
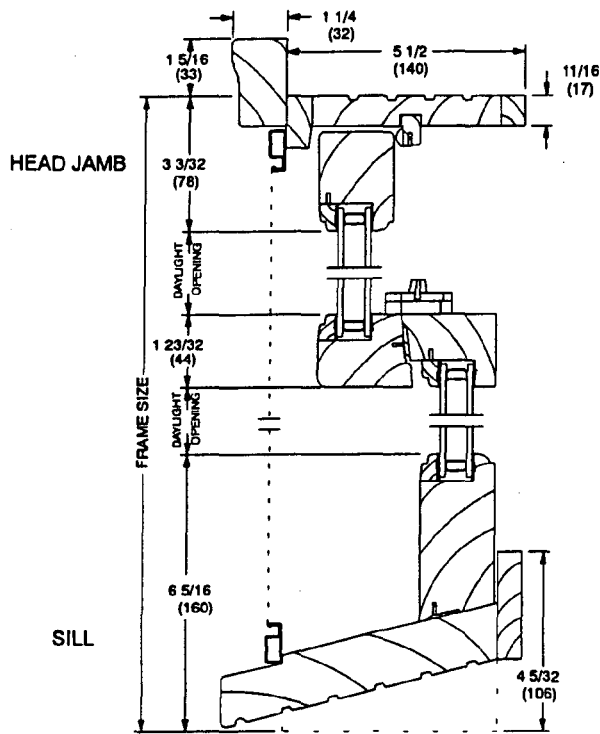


Insulating
with 1 1/8" Grille

WOOD MAGNUM DOUBLE HUNG

SECTION DETAILS

SCALE: 3" = 1' 0"



VERTICAL
MULLION