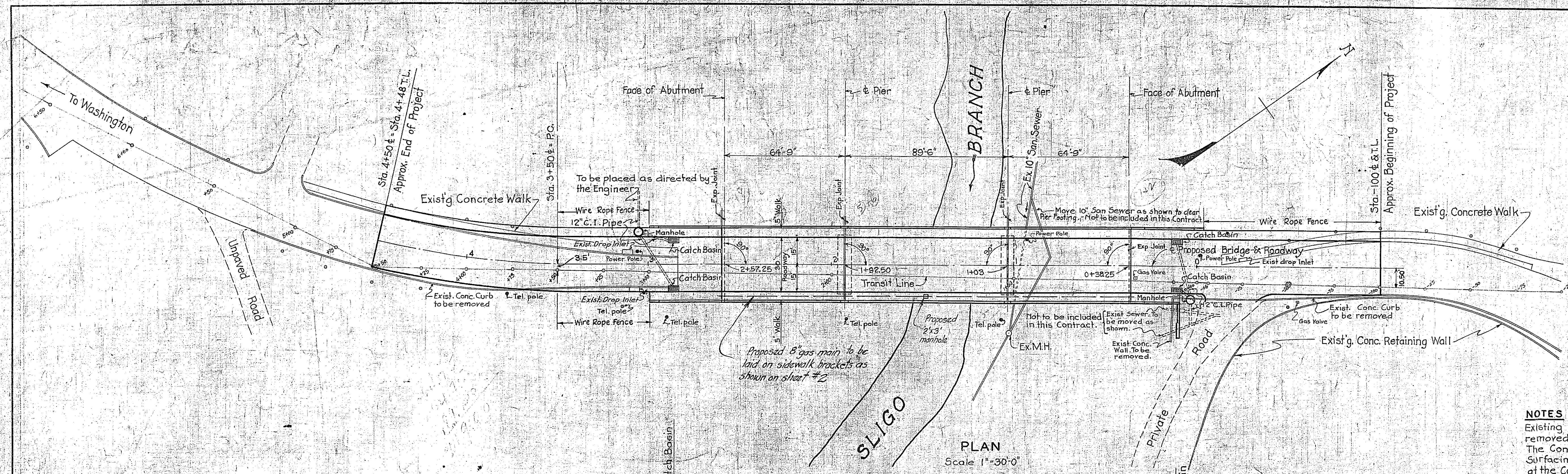


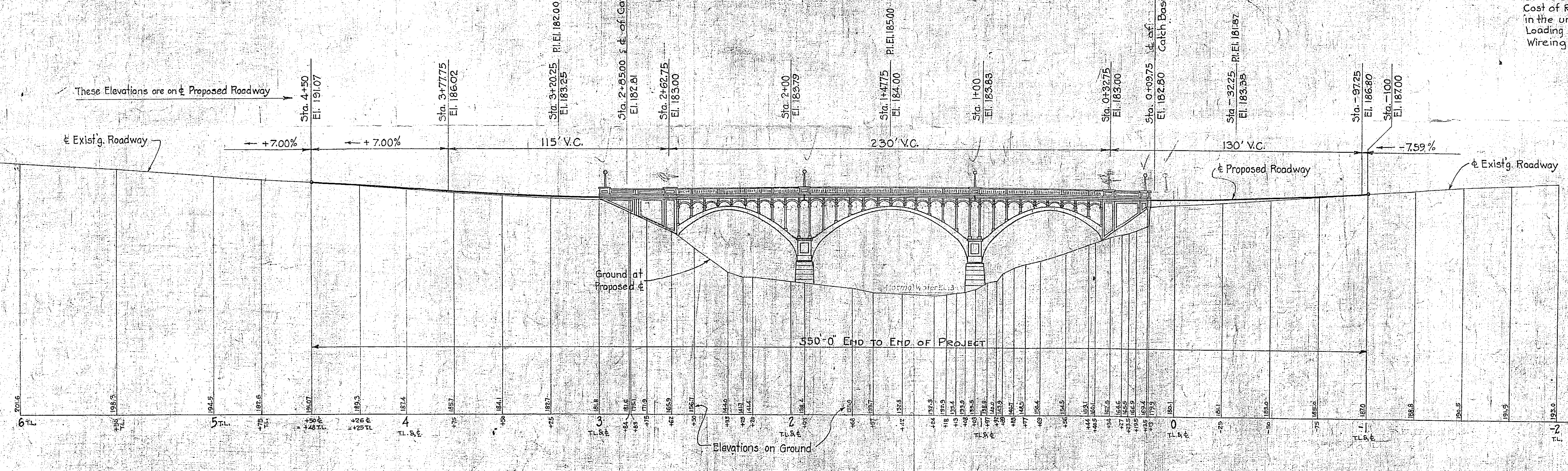
CARROLL AVE BRIDGE 1990

Bench Marks.  
 B.M.#2 On large poplar tree - Right of Sta. 3+00.  
 El. 178.43  
 B.M.#3 W.S.S.D. - Right of Sta. 5+30 - Bolt & washer  
 in stone monument Corner Jefferson Ave - El. 197.52



PLAN  
 Scale 1"=30'-0"

**NOTES**  
 Existing Bridge not shown on this drawing is to be removed under separate Contract.  
 The Contractor of Contract M-199-37 shall remove the Surfacing on each End of Bridge. This will be paid for at the Contract unit Price for "Removing Existing Surfacing". Cost of Removing existing Curb and Sidewalk to be included in the unit Price of "Excavation".  
 Loading H-20  
 Wiring and Lighting Standards under separate Contract.



ELEVATION  
 Scale 1"=30'-0"

- INDEX OF SHEETS**
- Sheet No. 1. General Plan & Elevation
  - " " 2. Typical Elevation & Cross Section
  - " " 3. Sections & Details of Superstructure
  - " " 4. Details of Piers
  - " " 5. South Abutment & Walls
  - " " 6. North Abutment & Walls
  - " " 7. do do do & Details

<b>REVISIONS</b> Showed location of proposed 8" gas main & manhole 7/24/32. <i>Haw</i>	<b>STATE OF MARYLAND</b> <b>STATE ROADS COMMISSION</b> BALTIMORE, MD.		
	<b>ARCH BRIDGE ON CARROLL AVE.</b> <b>OVER SLIGO BRANCH</b> IN TAKOMA PARK <b>GENERAL PLAN &amp; ELEVATION</b>		
	SCALE: AS NOTED MADE BY: <i>Haw</i> TRACED BY: <i>Haw</i> CHECKED BY: <i>W. S. S. D.</i> CORRECT 12/11/31	DEC. 1931 APPROVED: <i>W. S. S. D.</i> Dec. 11 - 1931 CHIEF ENGINEER	CONTRACT: M-199-37 SHEET NO. 11 OF 7

DD1 1 0 1990

BRIDGE No. 150