

Somerset
4817 Dorset Avenue

DAVID JONES ARCHITECTS

1739 CONNECTICUT AVENUE, NW • WASHINGTON, DC 20009

Photographs of Cottage

HISTORIC PRESERVATION COMMISSION

c/o Ms. Perry Kapsch

HISTORIC PRESERVATION PLANNER

1109 SPRING STREET, SUITE 801

SILVER SPRING, MD. 20910

DAVID JONES ARCHITECTS

1739 Connecticut Avenue N.W.
WASHINGTON, DC 20009

LETTER OF TRANSMITTAL

(202) 332-1200
FAX (202) 332-7044

TO Historic Preservation Commission
c/o Ms. Perry Kapsch
1109 Spring Street, Suite 801
Silver Springs, MD. 20910

DATE	5.14.02	JOB NO.	
ATTENTION	Ms. Perry Kapsch.		
RE:	MAXLIN RESIDENCE 4817 DORSET AVE. CHEVY CHASE MD.		

WE ARE SENDING YOU Attached Under separate cover via _____ the following items:

- Shop drawings Prints Plans Samples Specifications
 Copy of letter Change order photos.

COPIES	DATE	NO.	DESCRIPTION
1	Jan 25.01		EXISTING DRAWING of 4817 Dorset Ave, 6 SHEETS.
1			PHOTOS of EXISTING - 3 rolls

THESE ARE TRANSMITTED as checked below:

- For approval Approved as submitted Resubmit _____ copies for approval
 For your use Approved as noted Submit _____ copies for distribution
 As requested Returned for corrections Return _____ corrected prints
 For review and comment _____
 FOR BIDS DUE _____ PRINTS RETURNED AFTER LOAN TO US

REMARKS

If you need anything else please Give us
a Call.

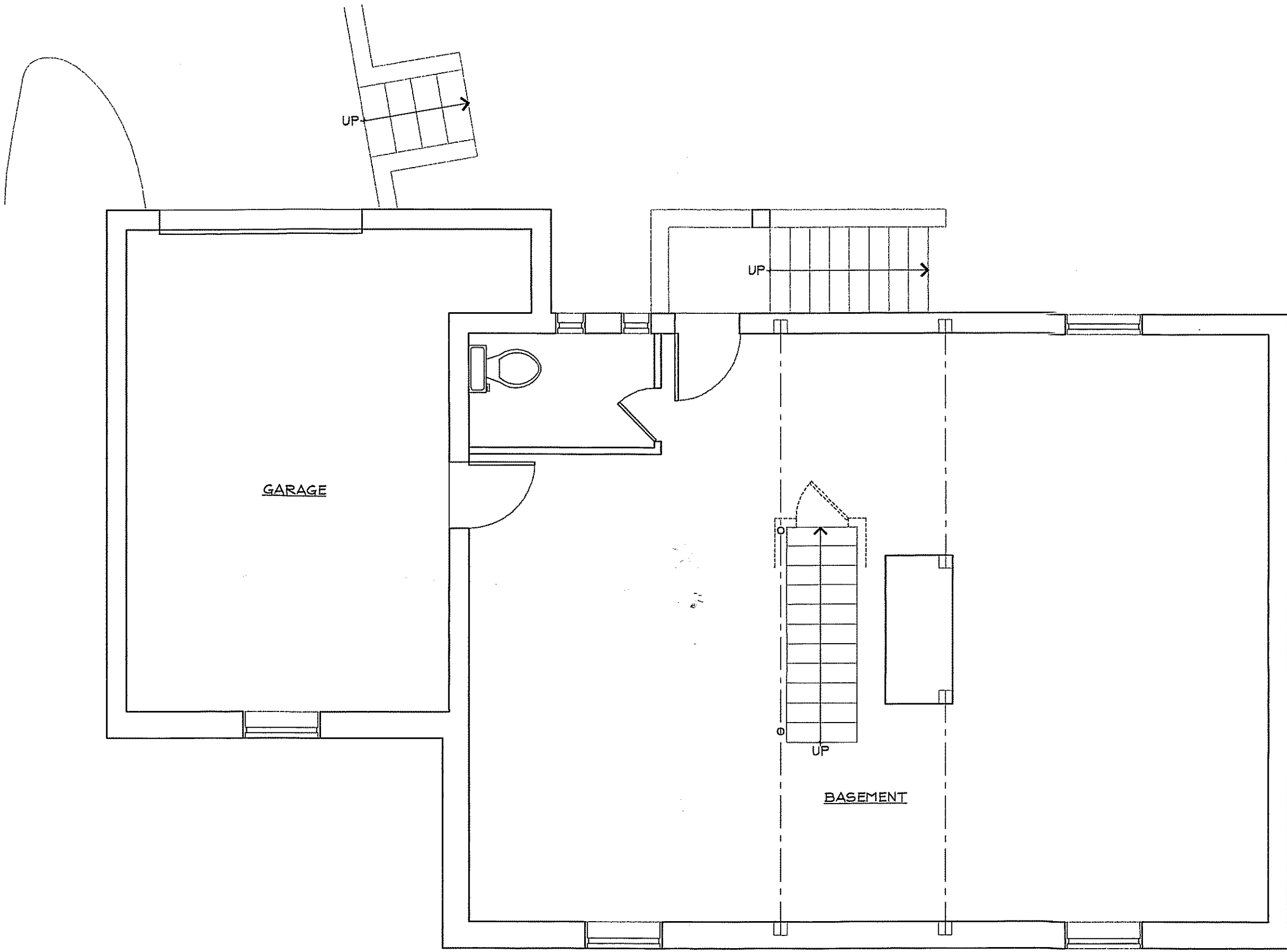
Thanks you.

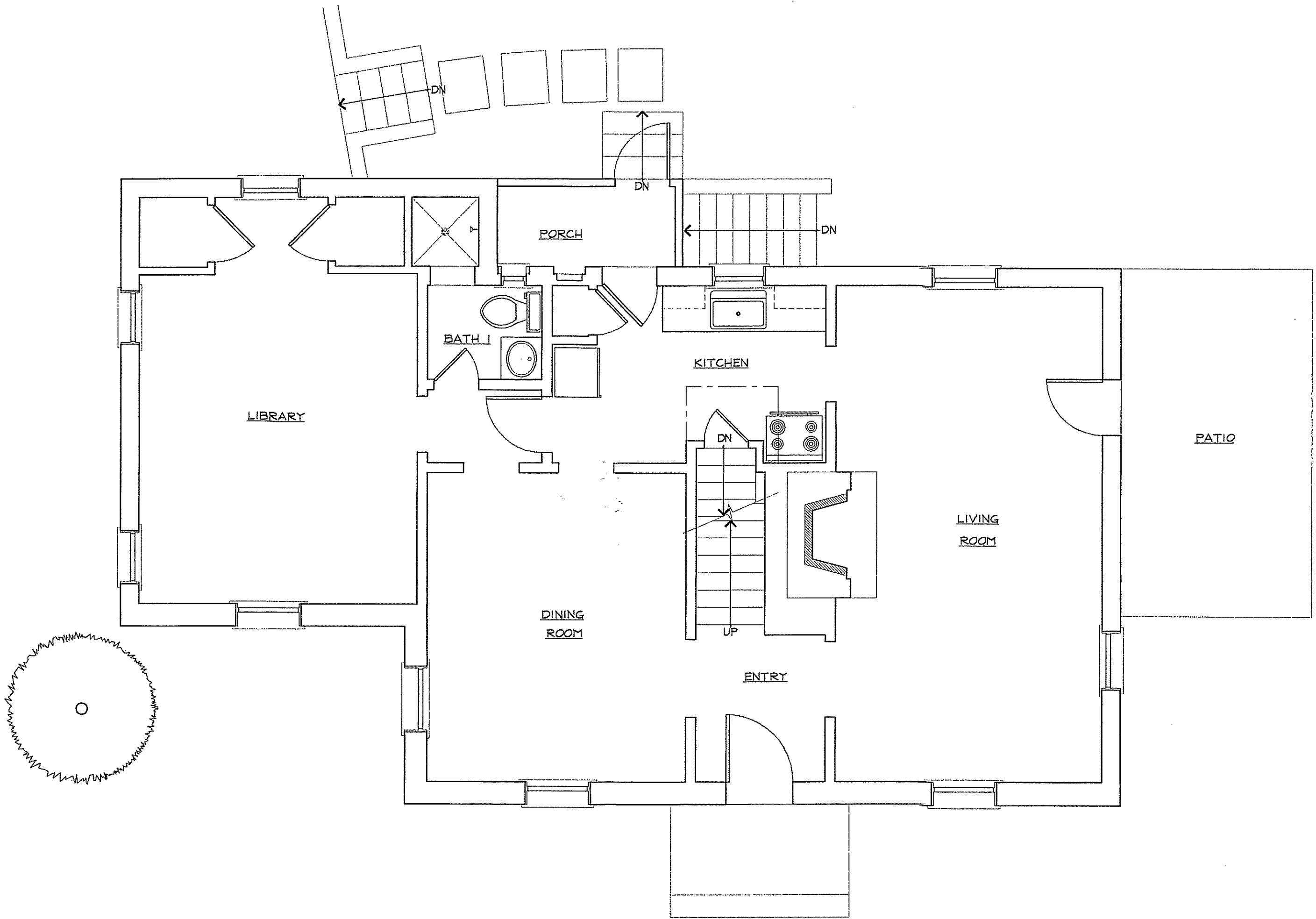
COPY TO _____

SIGNED:

Bill Tucker

If enclosures are not as noted, kindly notify us at once.

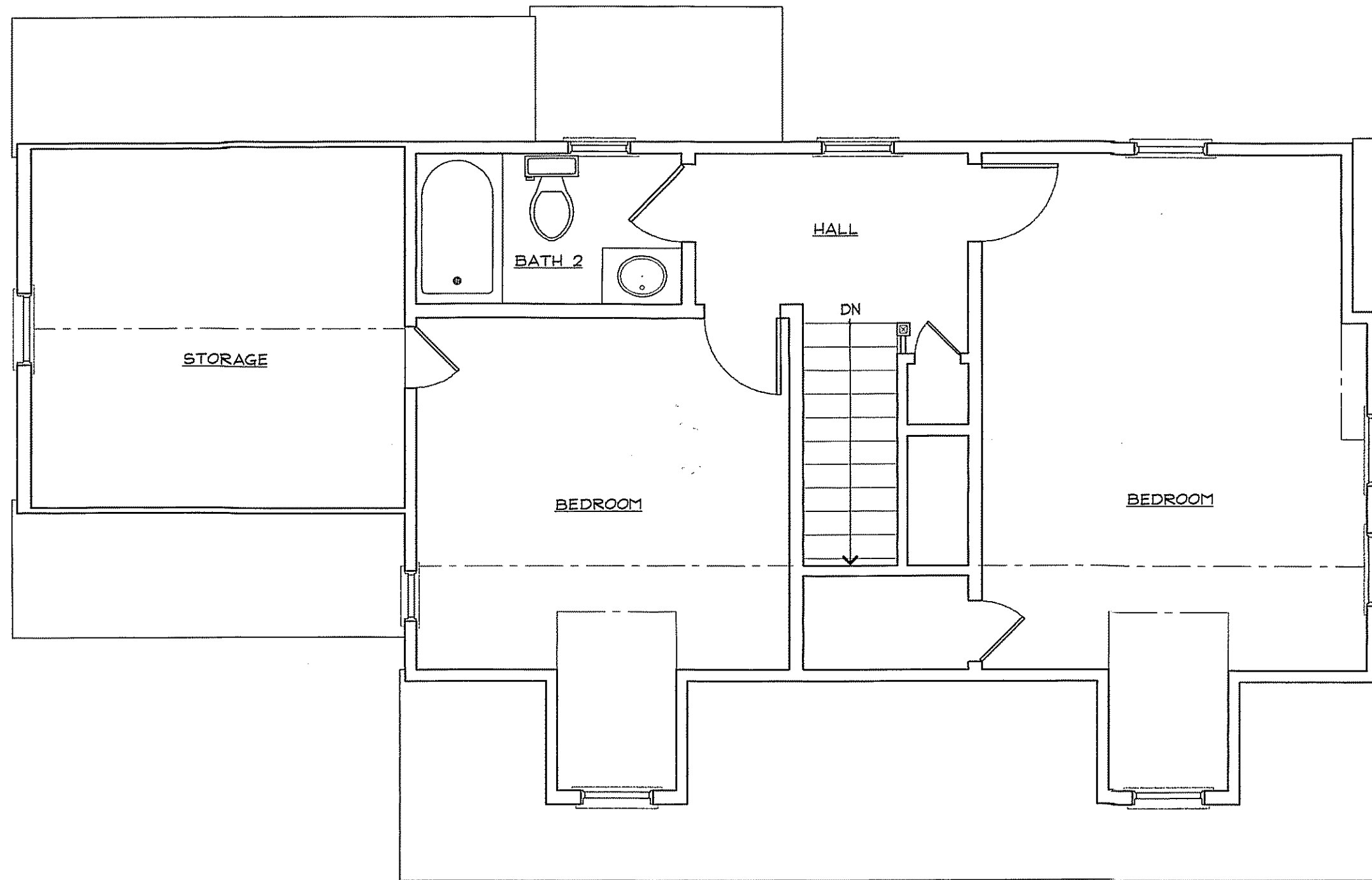




MACKLIN RESIDENCE

EXISTING FIRST FLOOR PLAN
SCALE: 1/4" = 1'-0"

DAVID JONES ARCHITECTS
JANUARY 25, 2001





MACKLIN RESIDENCE

EXISTING FRONT ELEVATION
SCALE: 1/4" = 1'-0"

DAVID JONES ARCHITECTS
JANUARY 25, 2001



MACKLIN RESIDENCE

EXISTING WEST ELEVATION
SCALE: 1/4" = 1'-0"

DAVID JONES ARCHITECTS
JANUARY 25, 2001



MACKLIN RESIDENCE

EXISTING EAST ELEVATION
SCALE: 1/4" = 1'-0"

DAVID JONES ARCHITECTS
JANUARY 25, 2001

Motophoto is the leading franchisor of specialty retail imaging stores
 for franchise opportunities. Our sales and customer care centers, contact the
 Motophoto World Support Center located in Dayton, Ohio at 1-800-733-6686
 or e-mail expert@motophoto.com

The best place for pictures... guaranteed!

MOTOPHOTO®

Date: **2000**

Occasion:

**Mackin BOS.
 4817 Dorset Ave.**

Signature

MOTOPHOTO

**Color and Black & White Film and Processing • Photos to CD or Disk
E-Mail Your Photos • Panoramic Prints • Reprints • Single-Use Cameras
Photo Enhancements • Digital Imaging • Enlargements • Passport Photos
Photo Greeting Cards • Advanced Photo System™ Film and Processing**

www.motophoto.com





















































MOTOPHOTO

Smile!

Date: 2000
Occasion:
Machlin Res.
4817 Dorset Ave.

MOTOPHOTO®

The best place for pictures... guaranteed!

Please contact your locally owned MotoPhoto® store with any concerns or questions regarding your order or shopping experience.

MotoPhoto is the leading franchisor of specialty retail imaging stores.
For franchise opportunities or unresolved customer care concerns contact the
MotoPhoto World Support Center located in Dayton, Ohio at 1-800-733-6686
or e-mail: expert@motophoto.com

**Color and Black & White Film and Processing • Photos to CD or Disk
E-Mail Your Photos • Panoramic Prints • Reprints • Single-Use Cameras
Photo Enhancements • Digital Imaging • Enlargements • Passport Photos
Photo Greeting Cards • Advanced Photo System™ Film and Processing**

www.motophoto.com



















































MOTOPHOTO

Date: 2000
Occasion: Maxlin BBS.
4817 DORSET AVE

MOTOPHOTO®

The best place for pictures... guaranteed!

Please contact your locally owned MotoPhoto® store with any concerns or questions regarding your order or shopping experience.

MotoPhoto is the leading franchisor of specialty retail imaging stores.
For franchise opportunities or unresolved customer care concerns, contact the
MotoPhoto World Support Center located in Dayton, Ohio at 1-800-733-6686
or e-mail expert@motophoto.com

Color and Black & White Film and Processing • Photos to CD or Disk
E-Mail Your Photos • Panoramic Prints • Reprints • Single-Use Cameras
Photo Enhancements • Digital Imaging • Enlargements • Passport Photos
Photo Greeting Cards • Advanced Photo System™ Film and Processing

www.motophoto.com

